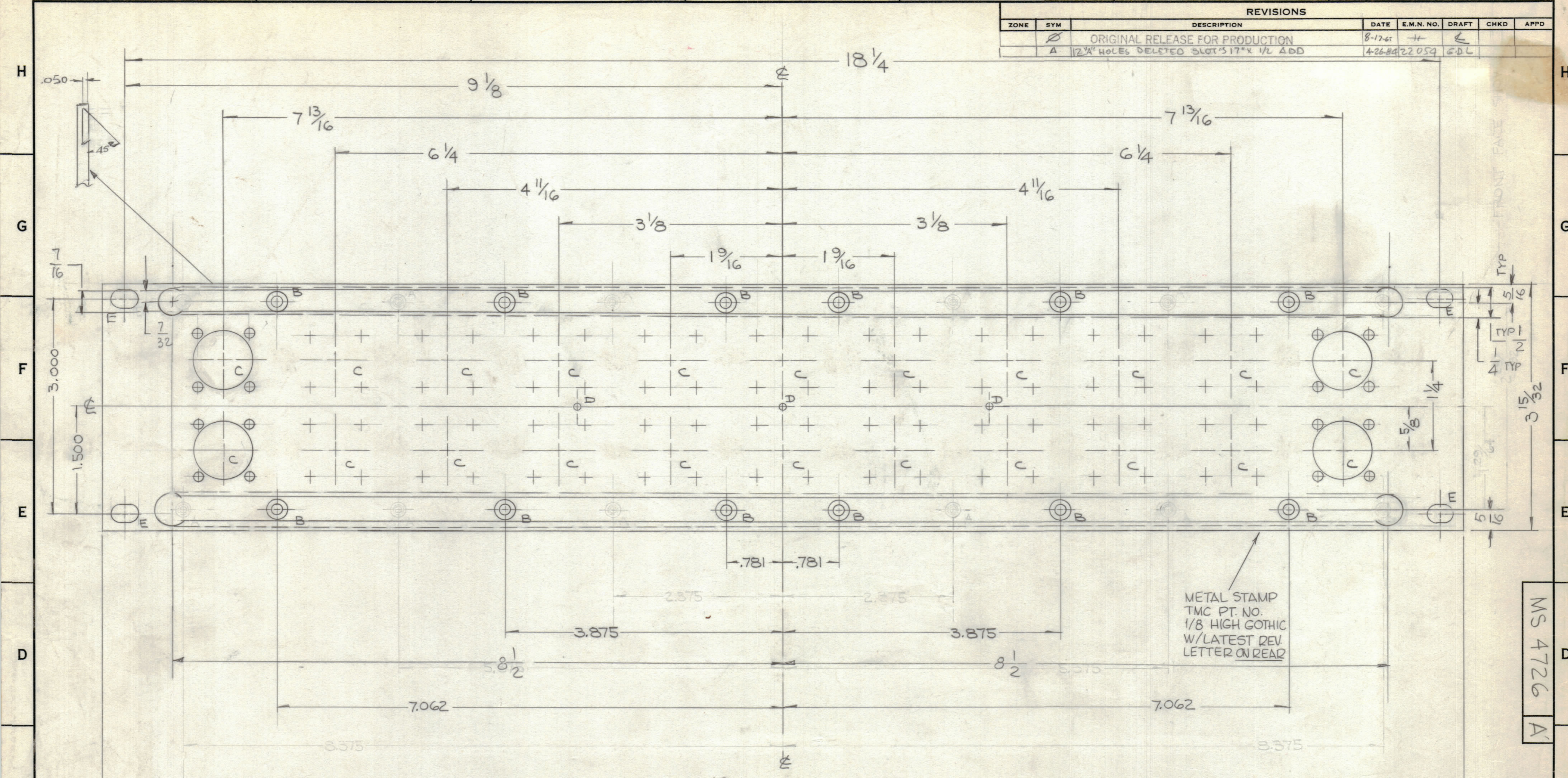
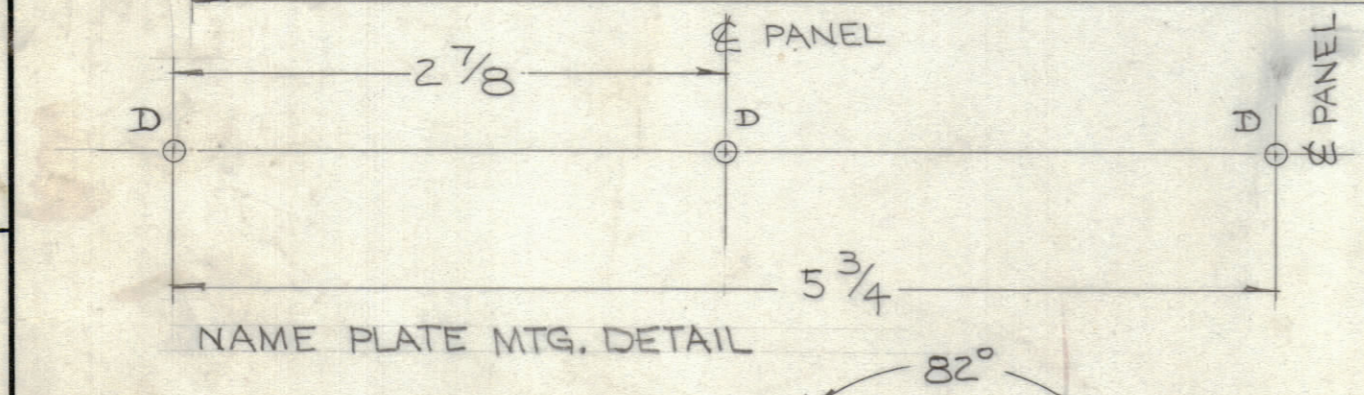


REVISIONS					
ZONE	SYM	DESCRIPTION	DATE	E.M.N. NO.	DRAFT
		ORIGINAL RELEASE FOR PRODUCTION	8-12-65	H	
A		12" HOLES DELETED SLOT 3/16" X 1/2" ADD	4-26-64	22059	EDL



METAL STAMP
TMC PT. NO.
1/8 HIGH GOTHIC
W/LATEST REV.
LETTER ON REAR

MS 4726
A

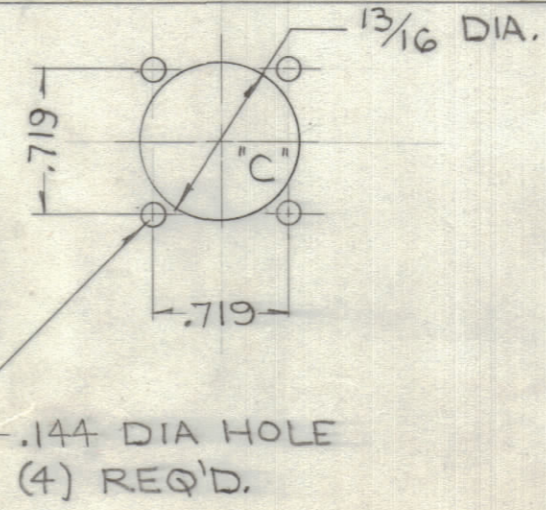


MACHINING:

1. MILL ALL EDGES.
2. HOLES MUST BE DRILLED, UNLESS OTHERWISE SPECIFIED.
3. LATERAL BOW OF PANEL MUST BE KEPT TO .031 TOLERANCE.
4. PANEL MUST BE FREE OF ALL MACHINING MARKS, GOUGES AND SCRATCHES. IF NECESSARY, SAND FRONT OF PANEL WITH NO. 120 GRIT SANDPAPER.

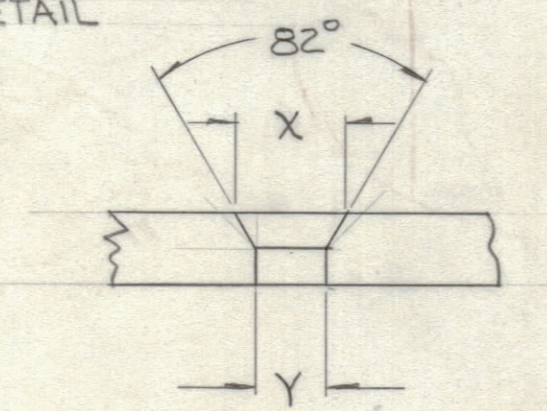
FINISH NOTES:

1. S404 - IRIDITE 14-2 AL-COAT.
2. S114 - ZINC CHROMATE PRIMER) FRONT AND
3. S115 - SMOOTH GRAY ENAMEL) EDGES ONLY



A - DRILL & TAP # 3-48 (SEE DETAIL) 6 REQ'D.
B - DRILL & C'SINK FOR # 6-32 (SEE DETAIL) 12 REQ'D.
C - SEE DETAIL 22 REQ'D.
D - # 50 DRILL (.070) (SEE NAMEPLATE) 3 REQ'D.
E - 1/4 X 29/64 SLOTS 4 REQ'D.

DIM	#3 F.H.S.	#6 F.H.S.
X	.204	.284
Y	#47 (.078)	#27 (.144)



F.H.S. C'SINK DETAIL

REQ'D.	ITEM	PART NUMBER	DESCRIPTION	SYMBOL
MARTINENGO LIST OF MATERIAL				
MATERIAL		THE TECHNICAL MATERIEL CORP. MAMARONECK, NEW YORK		
3/16 STOCK 2S-T3 - ALUM.		TITLE FRONT PANEL		
FINISH		SEE NOTE		
UNLESS OTHERWISE SPECIFIED DIMENSIONS ARE IN INCHES AND INCLUDE CHEMICALLY APPLIED OR PLATED FINISHES		DRAWN	DATE	FINAL APPROVAL
DECIMALS .X ± .05 .XX ± .01 .XXX ± .005		CHECKED	DATE	DATE
FRACTIONS ± 1/64 ANGLES ± 0° 30'		ELECT. DES.	DATE	DATE
		MECH. DES.	DATE	DATE
		MS4726		A
		SHEET		REV. LTR.

QTY./UNIT	MODEL USED ON	ASS'Y. NO.
	QDP-1B1X18	
SCALE	CODE	
FULL		

NOTES

THE CONTENTS OF THIS DRAWING ARE THE EXCLUSIVE PROPERTY OF THE TECHNICAL MATERIEL CORP. ITS UNAUTHORIZED USE OR REPRODUCTION IN WHOLE OR IN PART IS STRICTLY FORBIDDEN.