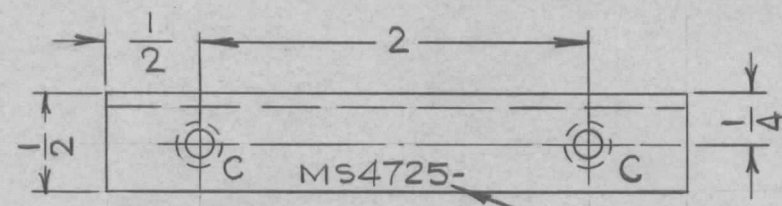
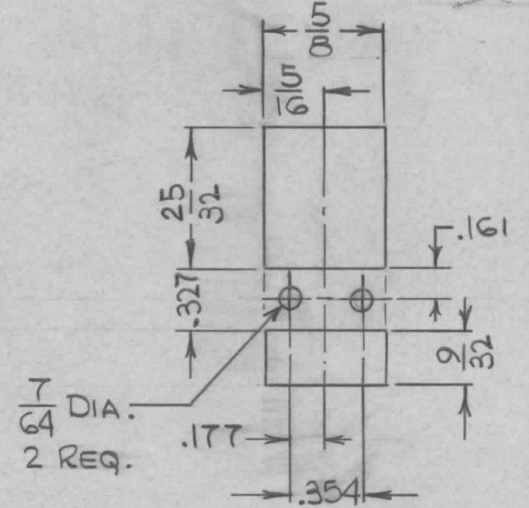
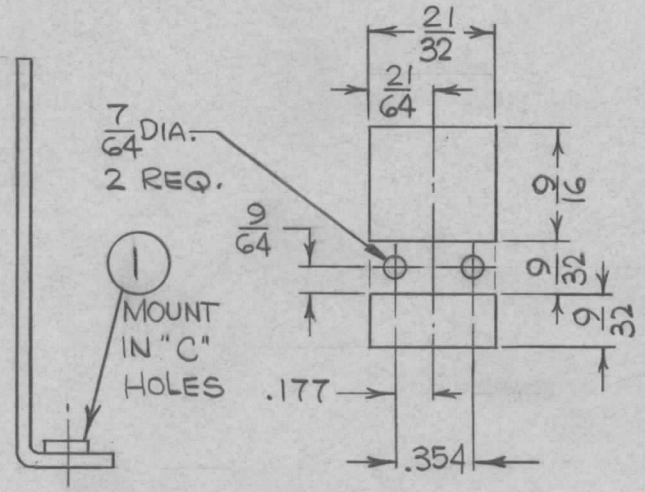
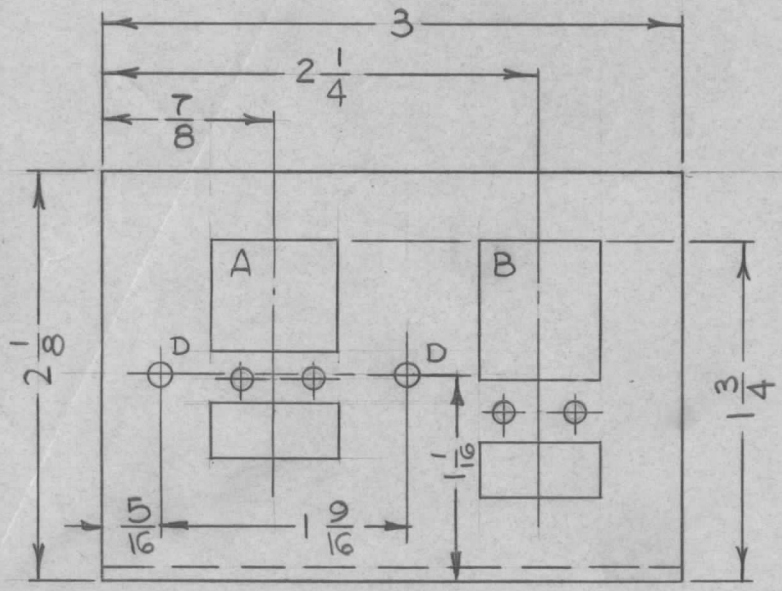


REQ. PER UNIT	USED ON			MS4725 Ø
	MODEL	ASS'Y. NO.	DATE	
1	VLRE-1		8-9-65	



- UNLESS OTHERWISE SPECIFIED:
1. USE MATERIAL THICKNESS FOR MAXIMUM RADIUS ON ALL BENDS
  2. ALL ANGULAR BENDS 90 DEGREES
  3. REMOVE ALL BURRS AND SHARP EDGES
  4. MOUNT INSERTS AFTER FINISHING

METAL STAMP TMC PART NO. 1/8 HIGH GOTHIC. W/ LATEST REV. LETTER

HOLE	DESCRIPTION	REQ.
A	SEE DETAIL	1
B	SEE DETAIL	1
C	.191 - .194 DIA.	2
D	1/8 DIA.	2

2	1	NT-129-632-4	NUT, ROUND, SWAGE	C
REQ.	ITEM	PART NO.	DESCRIPTION	SYMBOL
		.080	STOCK SIZE	
		ALUMINUM	MATERIAL	
		5052-H32	TYPE & TEMPER	
		S404-YEL. IRIDITE	FINISH & SPEC. NO.	
		H. AUSTIN	DRAWN	
		JCB	CHECKED	
		M. ZETENA	DESCRIPTION	
		8/19/65	DATE	
		#	CH. NO.	
		E	DRAFTS	
			CHECKER	
			ENG. APP.	
		1:1	SCALE	
		A	CODE	
			UNLESS OTHERWISE SPECIFIED DIMENSIONS ARE IN INCHES AND INCLUDE CHEMICALLY APPLIED OR PLATED FINISHES	
			DECIMALS .X ± .05 .XX ± .01 .XXX ± .005	
			FRACTIONS ± 1/64 ANGLES ± 0° 30'	
			TOLERANCES	
			THE TECHNICAL MATERIEL CORP. MAMARONECK, NEW YORK	
			BRACKET, MOUNTING, RELAY	
			FINAL APPROVAL	
			ELEC. DES. APP.	
			MECH. DES. APP.	
			MS4725 Ø	