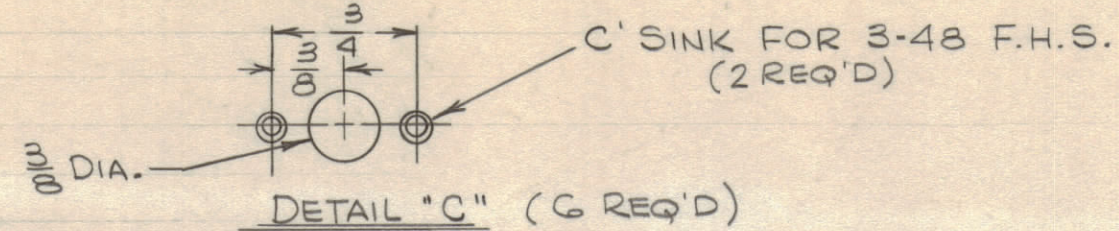
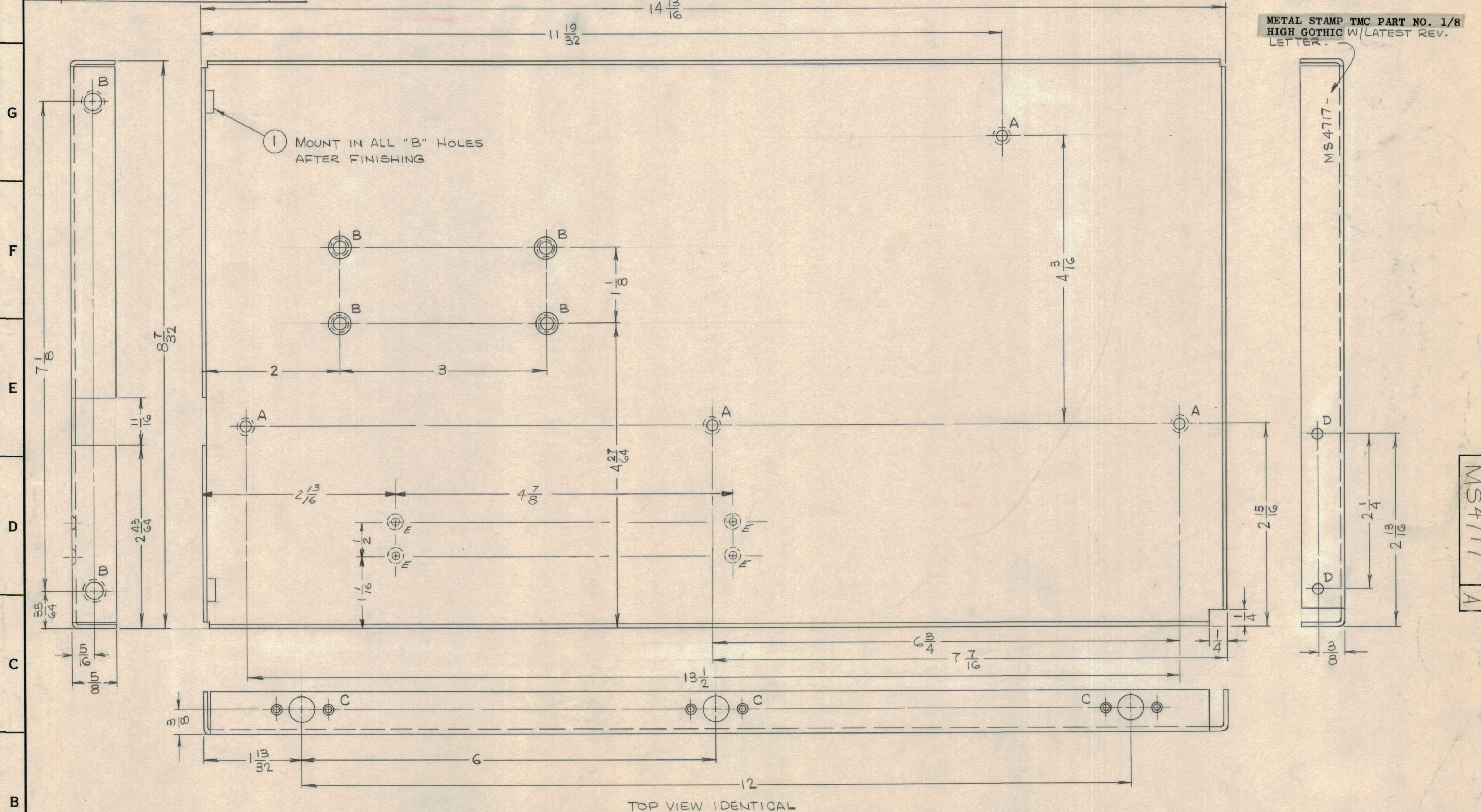


HOLE	DESCRIPTION	REQ'D
A	.166 DIA. - 82° CSK. TO .280 DIA.	4
B	.250 - .253 DIA.	6
C	SEE DETAIL	6
D	.166 DIA.	2
E	.120 DIA. 82° CSK TO .230 DIA.	4



REVISIONS						
ZONE	SYM	DESCRIPTION	DATE	E.M.N. NO.	DRAFT	CHKD
	Ø	ORIGINAL RELEASE FOR PRODUCTION	8/19/65	Ø		
A		4 "E" HOLES ADDED	8/24/65	15046	P.V.	



- UNLESS OTHERWISE SPECIFIED:
1. USE MATERIAL THICKNESS FOR MAXIMUM RADIUS ON ALL BENDS
 2. ALL ANGULAR BENDS 90 DEGREES
 3. REMOVE ALL BURRS AND SHARP EDGES
 4. MOUNT INSERTS AFTER FINISHING

REQ'D.	ITEM	PART NUMBER	DESCRIPTION	SYMBOL
G	1	NT129-1032-4	NUT, ROUND, SWAGE TYPE	B
M. ZETENA LIST OF MATERIAL				
MATERIAL		THE TECHNICAL MATERIEL CORP.		
.062 ALUMINUM 5052-H32		MAMARONECK, NEW YORK		
FINISH		TITLE		
S404-YEL. IRIDITE		PLATE, SIDE, LEFT		
UNLESS OTHERWISE SPECIFIED DIMENSIONS ARE IN INCHES AND INCLUDE CHEMICALLY APPLIED OR PLATED FINISHES		DRAWN	DATE	FINAL APPROVAL
		H. AUSTIN	7-30-65	
DECIMALS .X ± .05 .XX ± .01 .XXX ± .005		CHECKED	DATE	DATE
FRACTIONS ± 1/64 ANGLES ± 0° 30'		JCB	8/17/65	8/19/65
TOLERANCES		ELECT. DES.	DATE	
			MS4717	
		MECH. DES.	DATE	REV. LTR.
			8/19/65	A

NOTES