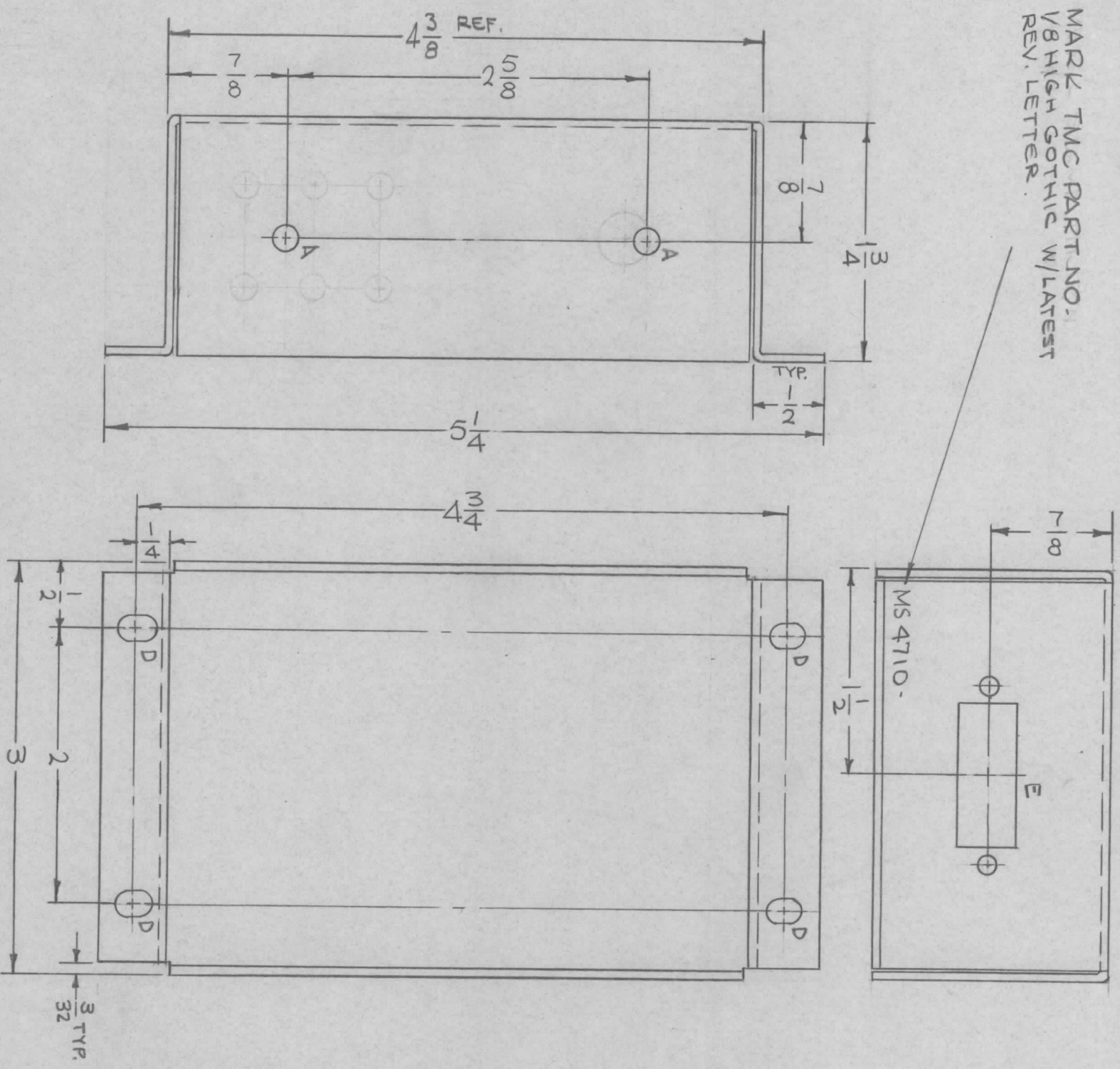


MARL TMC PART NO. 1  
 1/8 HIGH GOTHIC W/LATEST  
 REV. LETTER

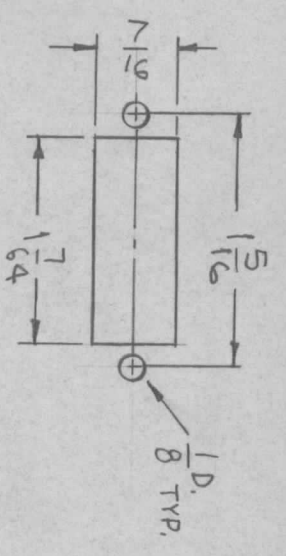


MS 4710

SYM	DESCRIPTION	DATE	E.M.N. NO.	DRAFT	CHKD	APPD
Ø	ORIGINAL RELEASE FOR PRODUCTION	3-3-66	-M-	Jc	QFB	anc

REVISIONS

HOLES	DESCRIPTION	REQ.
A	11/64 DIA.	2
B	3/16 DIA.	6
C	3/8 DIA.	1
D	11/64 X 1/4	4
E	SEE DETAIL	1



REF: LD1979.

REQD. ITEM	PART NUMBER	DESCRIPTION	SYMBOL
F. BUDETTI		LIST OF MATERIAL	

MATERIAL	TITLE
.064 THICK ALUMINUM 5052-H32	THE TECHNICAL MATERIEL CORP. MAMARONECK, NEW YORK
FINISH S404 YEL. IRIDITE	CHASSIS, CONTROL

UNLESS OTHERWISE SPECIFIED	DRAWN	DATE	FINAL APPROVAL	DATE
DIMENSIONS ARE IN INCHES AND INCLUDE CHEMICALLY APPLIED OR PLATED FINISHES	WBY	7-30-65	MS4710	3/3/66
TOLERANCES	QFB	3-2-66	MS4710	
DECIMALS X ± .05 .XX ± .01 .XXX ± .005				
FRACTIONS ± 1/64 ANGLES ± 0° 30'				

- UNLESS OTHERWISE SPECIFIED:
1. USE MATERIAL THICKNESS FOR MAXIMUM RADIUS ON ALL BENDS
  2. ALL ANGULAR BENDS 90 DEGREES
  3. REMOVE ALL BURRS AND SHARP EDGES

NOTES

QTY./UNIT	MODEL USED ON	ASSY. NO.
1	TST-10K	
SCALE 1:1	CODE A	

THE CONTENTS OF THIS DRAWING ARE THE EXCLUSIVE PROPERTY OF THE TECHNICAL MATERIEL CORP. ITS UNAUTHORIZED USE OR REPRODUCTION IN WHOLE OR IN PART IS STRICTLY FORBIDDEN.