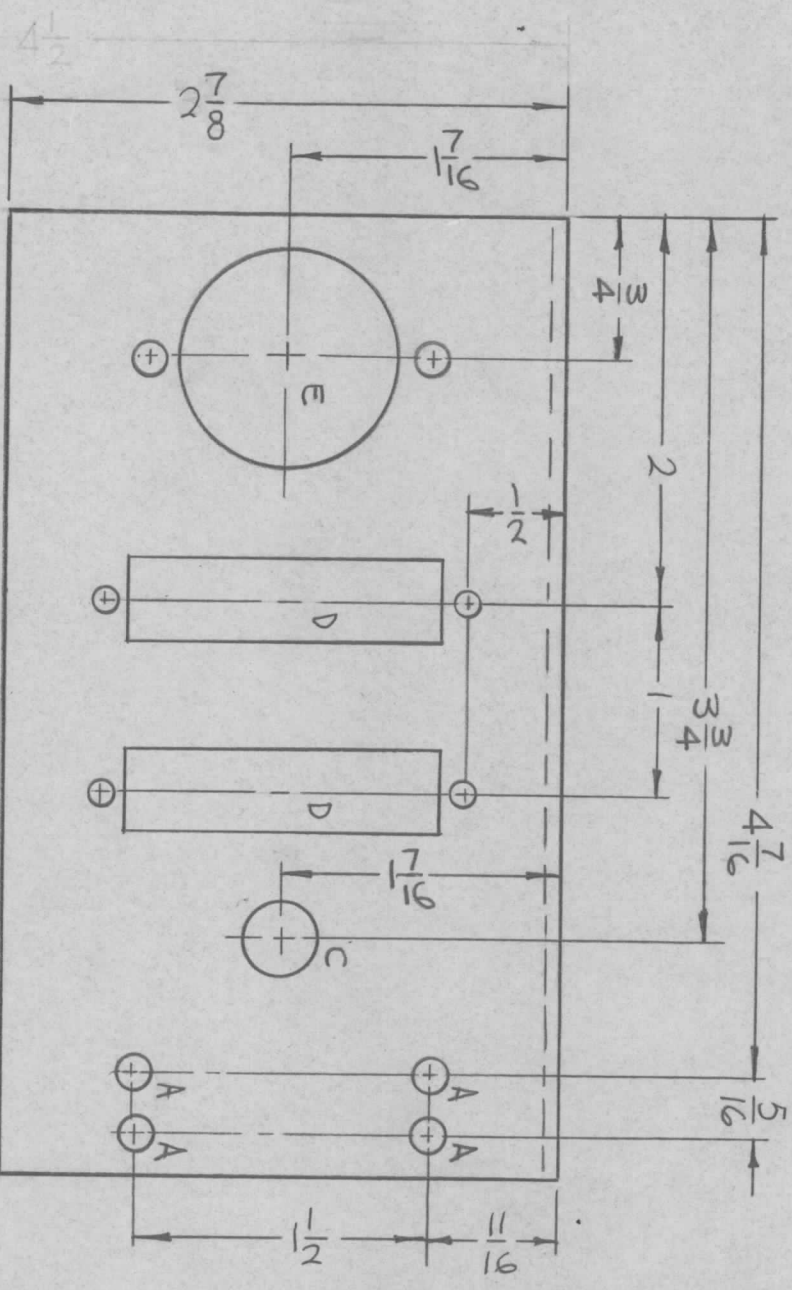


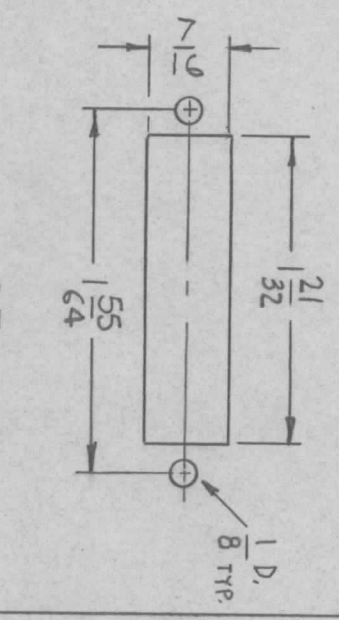
MARK TMC
PART NO.
1/8 HIGH GOTHIC
W/LATEST REV.
LETTER.



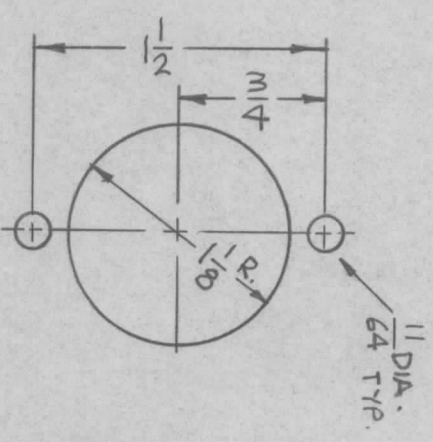
MS 4706

REVISIONS						
SYM	DESCRIPTION	DATE	E.M.N. NO.	DRAFT	CHKD	APPD
X1	2-7/8 WAS 4-1/2, 1 C HOLE DELETED	7-28-65	X1	APB		
Ø	ORIGINAL RELEASE FOR PRODUCTION	3-3-66	m	Jc		APB anc

HOLES	DESCRIPTION	REQ.
A	11/64 DIA.	4
B	1/4 DIA.	2
C	3/8 DIA.	1
D	SEE DETAIL	2
E	SEE DETAIL	1



D-DETAIL



E-DETAIL

REF: LD 2003

F. BUDETTI

LIST OF MATERIAL

MATERIAL
.064 THICK ALUMINUM
5052-H32

THE TECHNICAL MATERIEL CORP.
MAMARONECK, NEW YORK

FINISH
S404 YEL. IRIDITE

TITLE
BRACKET, MTG. COMPONENTS

UNLESS OTHERWISE SPECIFIED
DIMENSIONS ARE IN INCHES AND INCLUDE
CHEMICALLY APPLIED OR PLATED FINISHES

DECIMALS
X ± .05
.XX ± .01
.XXX ± .005

TOLERANCES

FRACTIONS
± 1/64
ANGLES
± 0° 30'

DRAWN	CHECKED	ELECT. DES.	MECH. DES.	DATE	FINAL APPROVAL	DATE	REV. LTR.
APB	APB		APC	7-26-65	[Signature]		
				3-2-66			

- UNLESS OTHERWISE SPECIFIED:
1. USE MATERIAL THICKNESS FOR MAXIMUM RADIUS ON ALL BENDS
 2. ALL ANGULAR BENDS 90 DEGREES
 3. REMOVE ALL BURRS AND SHARP EDGES

NOTES

THE CONTENTS OF THIS DRAWING ARE THE EXCLUSIVE PROPERTY OF THE TECHNICAL MATERIEL CORP. ITS UNAUTHORIZED USE OR REPRODUCTION IN WHOLE OR IN PART IS STRICTLY FORBIDDEN.

QTY./UNIT	1	MODEL USED ON	TST-10K	ASS'Y. NO.	
SCALE	1:1	CODE	A		