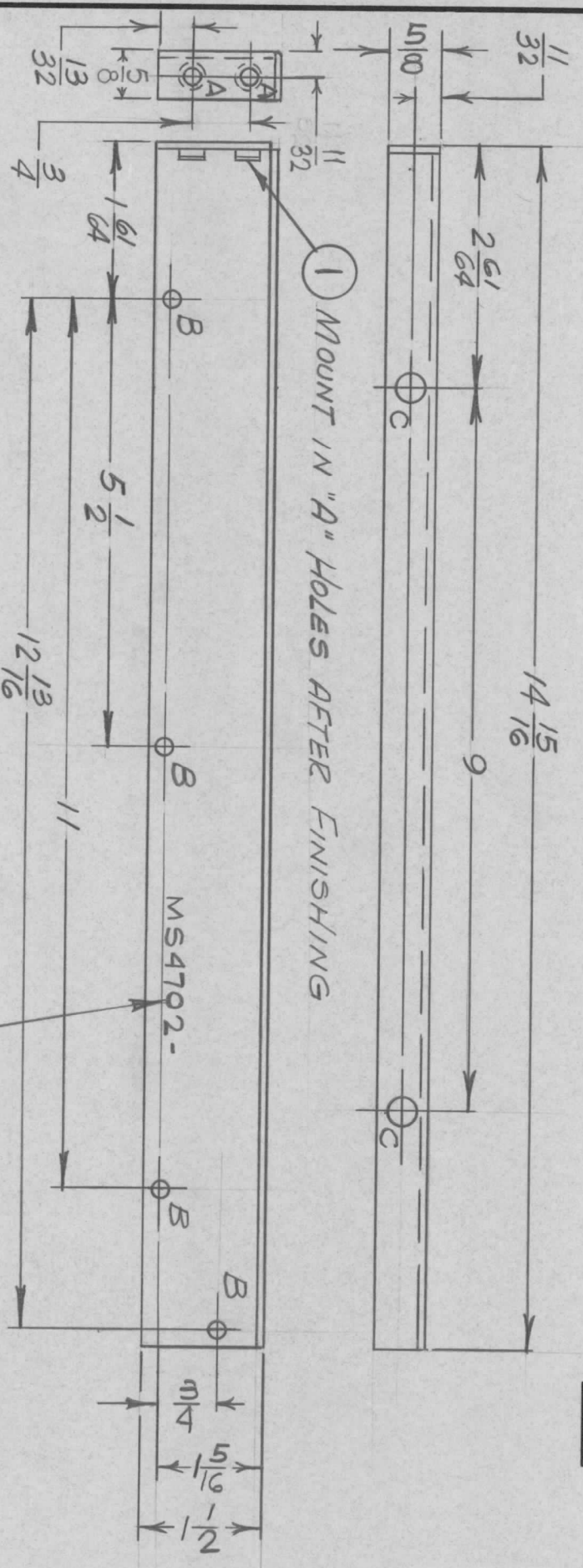


| SYM | DESCRIPTION                     | DATE    | E.M.N. NO. | DRAFT | CHKD | APPD |
|-----|---------------------------------|---------|------------|-------|------|------|
| Ø   | ORIGINAL RELEASE FOR PRODUCTION | 10-5-67 | #          | E     |      |      |

MS4702 Ø

| REVISIONS |                                 |         |            |       |      |      |
|-----------|---------------------------------|---------|------------|-------|------|------|
| SYM       | DESCRIPTION                     | DATE    | E.M.N. NO. | DRAFT | CHKD | APPD |
| Ø         | ORIGINAL RELEASE FOR PRODUCTION | 10-5-67 | #          | E     |      |      |



| HOLE | DESCRIPTION    | REQ. |
|------|----------------|------|
| A    | .191-.194 DIA. | 2    |
| B    | 3/16 DIA.      | 4    |
| C    | 3/8 DIA.       | 2    |

MS4702-1, AS SHOWN (LEFT SIDE)  
 MS4702-2, OPPOSITE HAND (RIGHT SIDE)

- UNLESS OTHERWISE SPECIFIED:
1. USE MATERIAL THICKNESS FOR MAXIMUM RADIUS ON ALL BENDS
  2. ALL ANGULAR BENDS 90 DEGREES
  3. REMOVE ALL BURRS AND SHARP EDGES
  4. MOUNT INSERTS AFTER FINISHING

|           |       |               |            |
|-----------|-------|---------------|------------|
| QTY./UNIT | SCALE | MODEL USED ON | ASS'Y. NO. |
| 1         | 1:2   | STR-1         |            |

| REQ'D. | ITEM | PART NUMBER | DESCRIPTION       | SYMBOL |
|--------|------|-------------|-------------------|--------|
| 2      | 1    | NT129-632-4 | NUT, ROUND, SWAGE | A      |

MATERIAL: .064 THK. ALUMINUM / 5052-H32

FINISH: 3404 YEL. IRIDIUM

TITLE: PLATE, SIDE RIGHT & LEFT

THE TECHNICAL MATERIEL CORP. MAMARONECK, NEW YORK

|             |         |                |         |
|-------------|---------|----------------|---------|
| DRAWN       | DATE    | FINAL APPROVAL | DATE    |
| H. Austin   | 7-26-65 | Ally Hoy       | 10/5/65 |
| CHECKED     | DATE    |                |         |
| J. Austin   | 9/16/65 |                |         |
| ELECT. DES. | DATE    |                |         |
| Mech. Des.  | DATE    |                |         |

UNLESS OTHERWISE SPECIFIED DIMENSIONS ARE IN INCHES AND INCLUDE CHEMICALLY APPLIED OR PLATED FINISHES

DECIMALS: X ± .05, .XX ± .01, .XXX ± .005

FRACTIONS: ± 1/64 ANGLES ± 0° 30'

TOLERANCES

THE CONTENTS OF THIS DRAWING ARE THE EXCLUSIVE PROPERTY OF THE TECHNICAL MATERIEL CORP. ITS UNAUTHORIZED USE OR REPRODUCTION IN WHOLE OR IN PART IS STRICTLY FORBIDDEN.