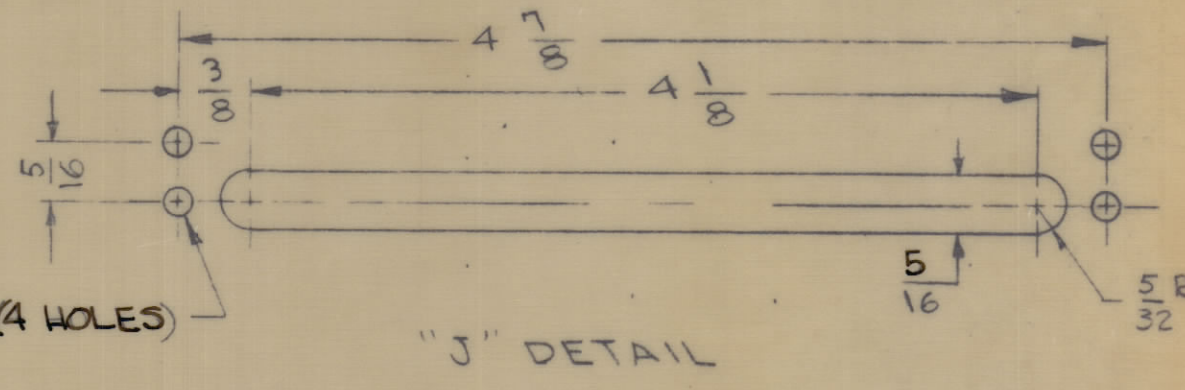
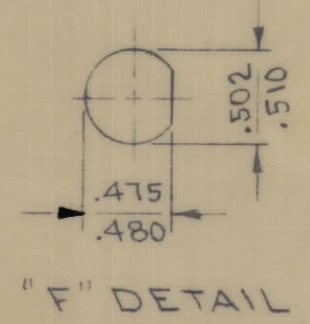


REVISIONS						
ZONE	SYM	DESCRIPTION	DATE	E.M.N. NO.	DRAFT	CHKD
X		EXPERIMENTAL RELEASE	7/26/65	X	HCA	
F4	X1	ADDED 19/82 DIM. LOCATING "K" HOLE	8/27/65	X1	HCA	
		ORIGINAL RELEASE FOR PRODUCTION	8/30/65		HQ	

HOLE LEGEND		
HOLE	DIAMETER	REQD
A	.189 DIA	13
B	5/32 DIA	3
C	9/64 DIA	1
D	1/4 DIA	1
E	.191-.194 DIA	8
F	SEE DETAIL	3
G	3/8 DIA	1
H	NOT USED	
J	SEE DETAIL	1
K	5/32 DIA. CSK 82°	16
L	9/64 DIA. CSK 82°	10



REF: LD1542 (STR-1, STR-2)

REQ'D	ITEM	PART NUMBER	DESCRIPTION	SYMBOL
13	2	TE108-11	STANDOFF, RIVET TYPE	A
8	1	NT129-632-4	NUT, ROUND, SWAGE TYPE	E

POSE		LIST OF MATERIAL	
MATERIAL	.064 THK. ALUMINUM 5052-H32	THE TECHNICAL MATERIEL CORP. MAMARONECK, NEW YORK	
FINISH	5404 YEL IRIDITE	TITLE CHASSIS, MAIN	
SCALE	1:2	DRAWN	DATE
MODEL USED ON	STR-2 STR-1	FILE	7/26/65
ASS'Y. NO.	A	CHECKED	DATE
		FILE	8/27/65
		ELECT. DES.	DATE
		MECH. DES.	DATE
UNLESS OTHERWISE SPECIFIED DIMENSIONS ARE IN INCHES AND INCLUDE CHEMICALLY APPLIED OR PLATED FINISHES		DATE	
DECIMALS	± .05	MS4698	
FRACTIONS	± 1/64	SHEET	
ANGLES	± .01	REV. LTR.	
TOLERANCES	XXX ± .005	REV. LTR.	
	± .005	REV. LTR.	

UNLESS OTHERWISE SPECIFIED:
 1. USE MATERIAL THICKNESS FOR MAXIMUM RADIUS ON ALL BENDS
 2. ALL ANGULAR BENDS 90 DEGREES.
 3. REMOVE ALL BURRS AND SHARP EDGES
 4. MOUNT INSERTS AFTER FINISHING

NOTES

THE CONTENTS OF THIS DRAWING ARE THE EXCLUSIVE PROPERTY OF THE TECHNICAL MATERIEL CORP. ITS UNAUTHORIZED USE OR REPRODUCTION IN WHOLE OR IN PART IS STRICTLY FORBIDDEN.

MS4698