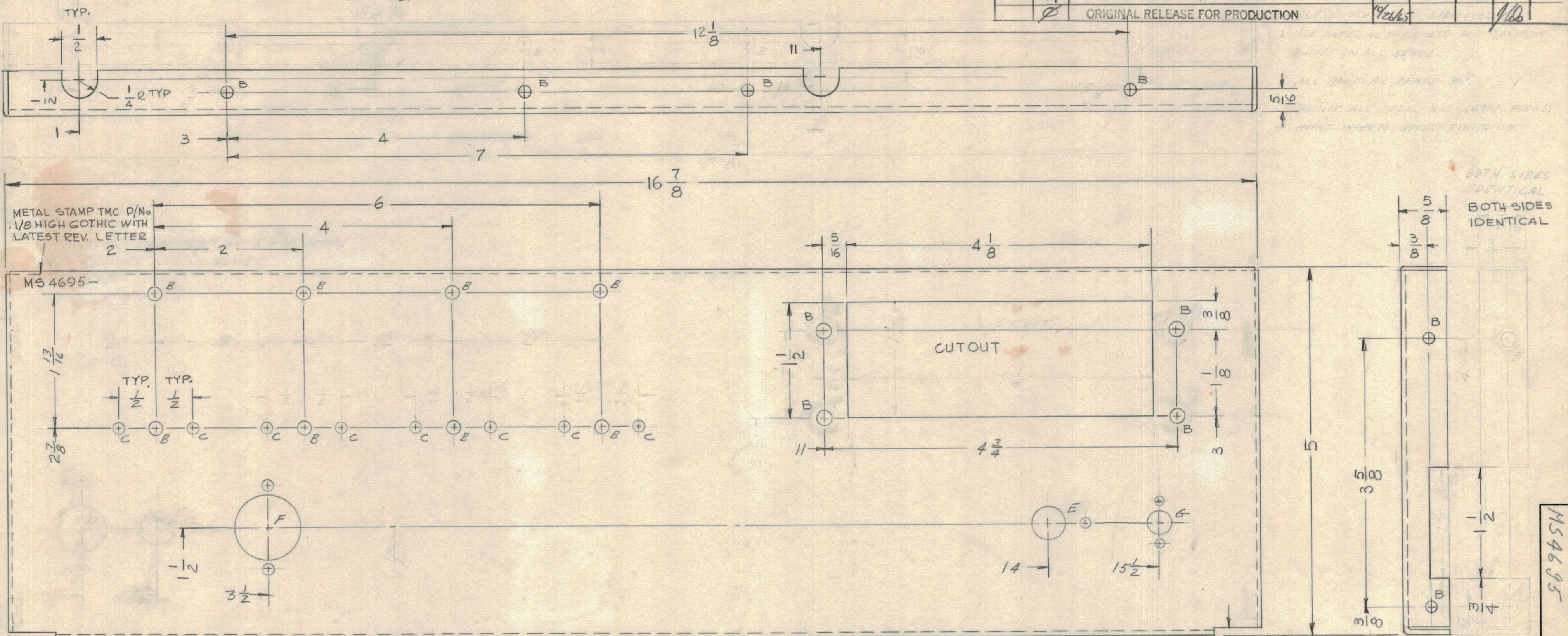


REVISIONS							
ZONE	SYM	DESCRIPTION	DATE	E.M.N. NO.	DRAFT	CHKD	APPD
	X1	Added All Holes	11/26/65				
	X2	DELETE A HOLES, ALL 4 B HOLES, ITEM 1 WAS NT129-632-4 DELETE B DETAIL, EDETAIL REQ WAS 2.	2/11/65		DLU		
H	X3	DELETED 1 1/2 NOTCH, Added 4 B HOLES	26/10/65		DCM		
	X4	PICTORIAL CLARIFIED	3-20-65		GDL		
	Ø	ORIGINAL RELEASE FOR PRODUCTION	10/26/65				

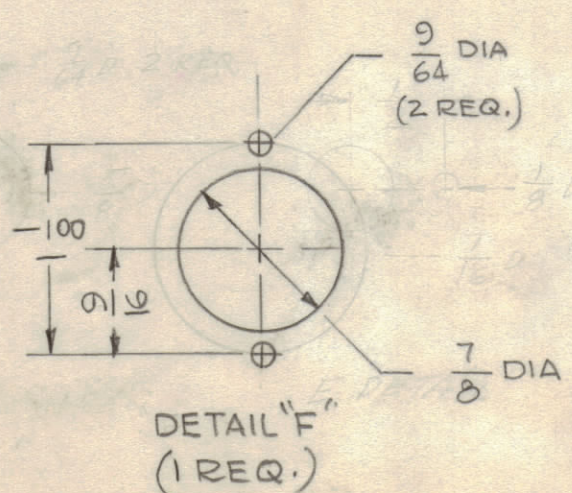
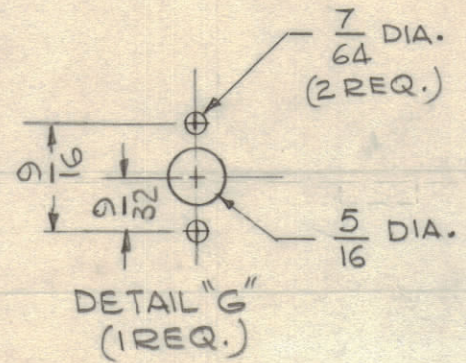
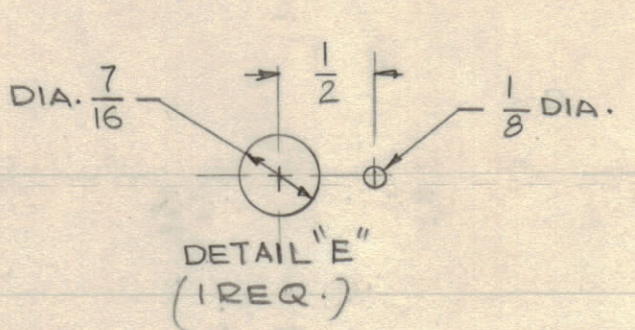
OPPOSITE SIDE SAME



1. USE MATERIAL THICKNESS FOR MAXIMUM RADIUS ON ALL BENDS.  
2. REMOVE ALL BURRS AND SHARP EDGES.  
3. HOLE INSERTS NOTED FINISHING

BOTH SIDES IDENTICAL  
BOTH SIDES IDENTICAL

HOLE	DESCRIPTION	REQ.
A	DELETED	
B	11/64 DIA	20
C	9/64 DIA	8
D	DELETED	
E	SEE DETAIL	1
F	SEE DETAIL	1
G	SEE DETAIL	1



UNLESS OTHERWISE SPECIFIED:  
1. USE MATERIAL THICKNESS FOR MAXIMUM RADIUS ON ALL BENDS  
2. ALL ANGULAR BENDS 90 DEGREES  
3. REMOVE ALL BURRS AND SHARP EDGES

REF: LD 1991

REQ'D	ITEM	PART NUMBER	DESCRIPTION	SYMBOL
	1	DELETED		
LANGER LIST OF MATERIAL				
MATERIAL .064 ALUMINUM 5052-H32			THE TECHNICAL MATERIEL CORP. MAMARONECK, NEW YORK	
FINISH S404 YEL IRIDITE			TITLE SUB CHASSIS, COMPONENT-MTG.	
UNLESS OTHERWISE SPECIFIED DIMENSIONS ARE IN INCHES AND INCLUDE CHEMICALLY APPLIED OR PLATED FINISHES			DRAWN JCB	DATE 10/22/65
DECIMALS .X ± .05 .XX ± .01 .XXX ± .005			CHECKED JCB	DATE 9/29/65
FRACTIONS TOLERANCES ± 1/64 ANGLES ± 0° 30'			ELECT. DES.	DATE
			MECH. DES.	DATE
			FINAL APPROVAL MS 4695	
			DATE 10/26/65	
			SHEET	
			REV. LTR.	

Q'TY./UNIT	MODEL USED ON	ASS'Y. NO.
1	RARB-1	A 5127
SCALE 1:1	CODE A	
THE CONTENTS OF THIS DRAWING ARE THE EXCLUSIVE PROPERTY OF THE TECHNICAL MATERIEL CORP. ITS UNAUTHORIZED USE OR REPRODUCTION IN WHOLE OR IN PART IS STRICTLY FORBIDDEN.		

NOTES