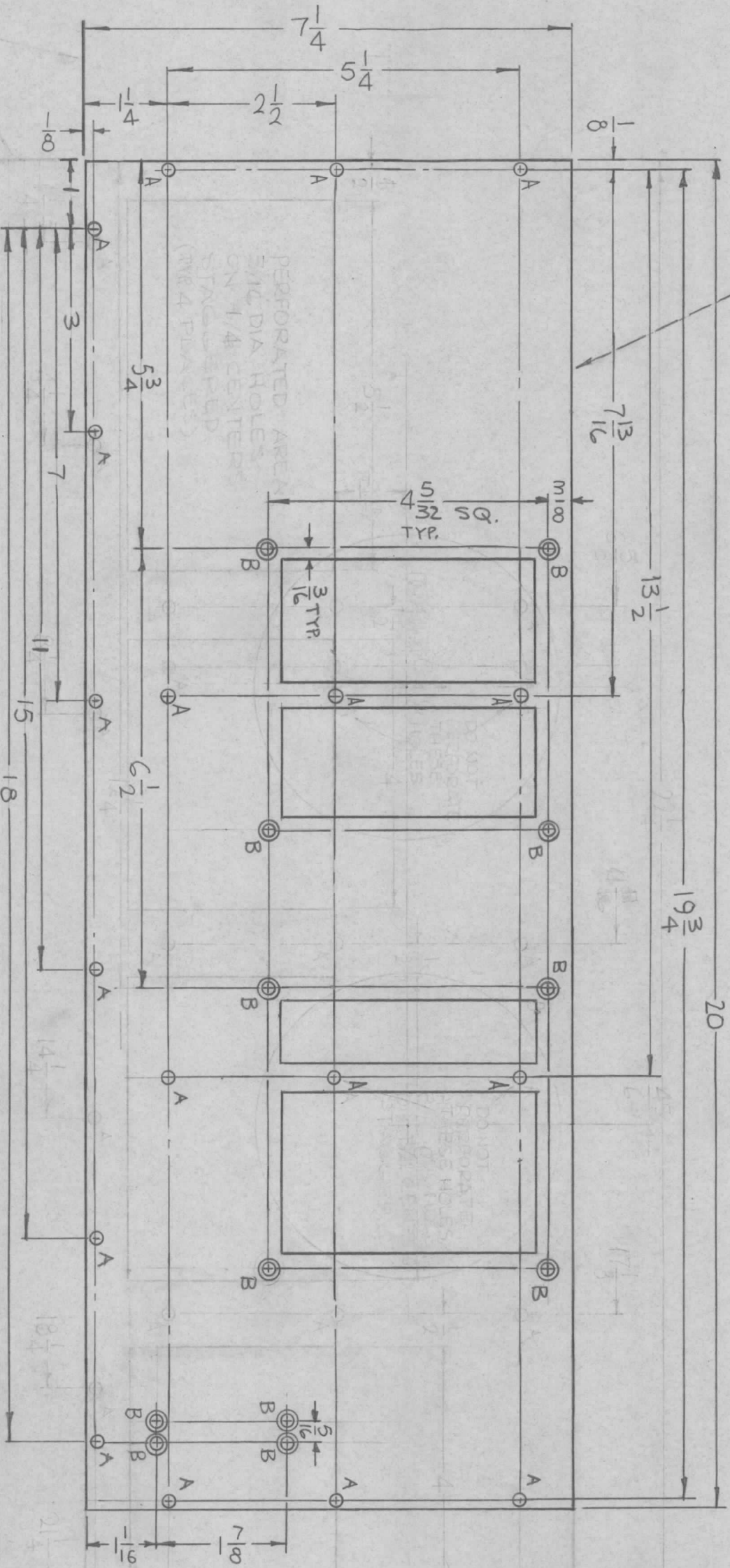


MARK TMC PART NO. (MS4690-)
 1/8 HIGH GOTHIC W/LATEST
 REV. LETTER. (ON REAR)

HOLES	DESCRIPTION	REQ.
A	11/64 DIA.	18
B	DR. 144 DIA. C'SINK 82° TO .284 DIA.	12

MS4690

SYMBOL		DESCRIPTION	DATE	E.M.N. NO.	DRAFT	CHKD	APPD
X1	11-11/16	WAS 11-5/8	7-21-65	X1	APB		
X2	RE-DESIGNED		8-9-65	X2	APB		
X3	PERFORATED AREA DELETED, CUTOUTS ADDED		8-24-65	X3	APB		
Ø	ORIGINAL RELEASE FOR PRODUCTION		3-3-66	M-1	Jc	APB	one



REQ'D.	ITEM	PART NUMBER	DESCRIPTION	SYMBOL
	F. BUDETTI			

MATERIAL	FINISH	TITLE
.064 THICK ALUMINUM S052-H32	S404 YEL. IRIDITE	PLATE, RIGHT SIDE, LOW PASS FILTER

UNLESS OTHERWISE SPECIFIED	DIMENSIONS ARE IN INCHES AND INCLUDE	CHEMICALLY APPLIED OR PLATED FINISHES
DECIMALS	X ± .05	FRACTIONS
	.XX ± .01	ANGLES
	.XXX ± .005	± 0° 30'

DRAWN	CHECKED	ELECT. DES.	MECH. DES.	DATE	DATE	DATE	DATE
APB	APB		APB	7-23-65	3-2-66		

FINAL APPROVAL	DATE	REV. LTR.
APB	3/3/66	Ø

LOCATING
 BASE-LINE
 MORE
 WHEN PERFORATIONS DO NOT
 PERFORATE A HOLE.

Q'TY./UNIT	MODEL USED ON	ASSY. NO.
1	TST-10K	

SCALE	CODE
1/2:1	A

NOTES
 THE CONTENTS OF THIS DRAWING ARE THE EXCLUSIVE PROPERTY
 OF THE TECHNICAL MATERIEL CORP. ITS UNAUTHORIZED USE OR
 REPRODUCTION IN WHOLE OR IN PART IS STRICTLY FORBIDDEN.