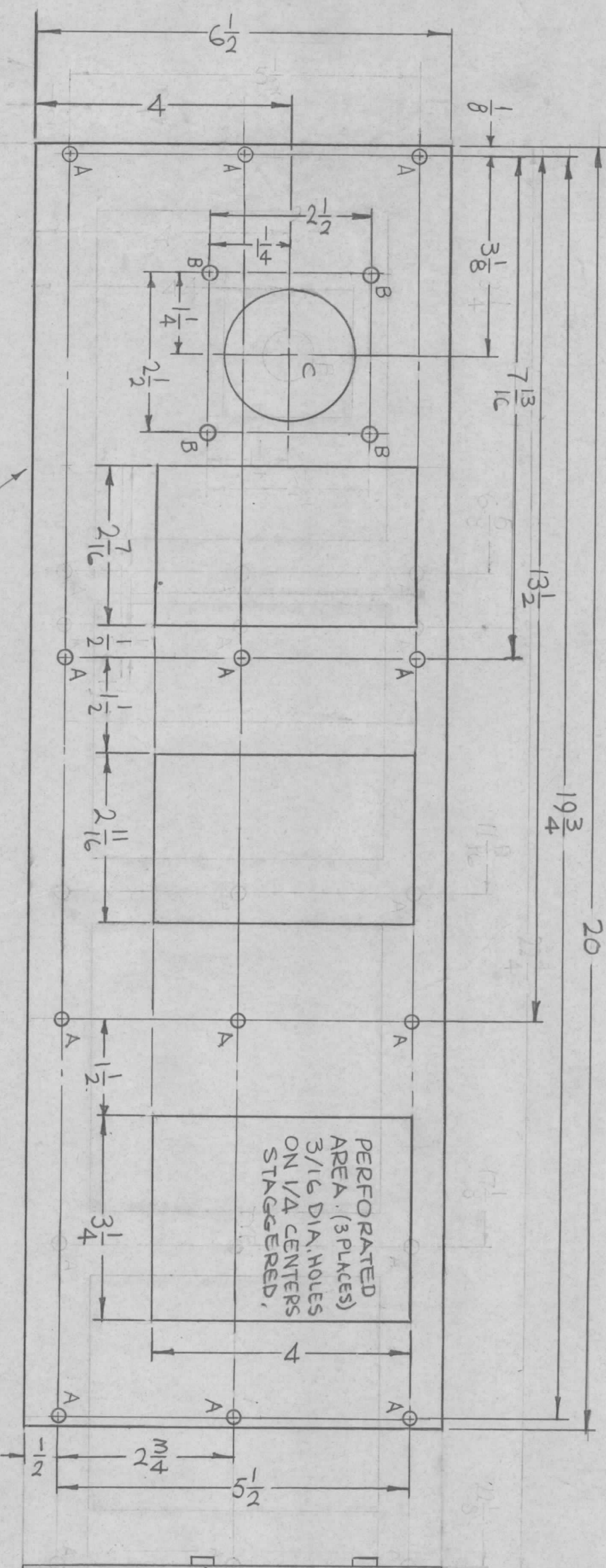


HOLES	DESCRIPTION	REQ.
A	11/64 DIA.	14
B	.221-.224 DIA.	4
C	2" DIA.	1

REVISIONS		SYM	DESCRIPTION	DATE	E.M.N. NO.	DRAFT	CHKD	APPD
X1	11-11/16 WAS 11-5/8			7-27-65	X1	MS		
X2	RE-DESIGNED			8-9-65	X2	MS		
Ø	ORIGINAL RELEASE FOR PRODUCTION			3-3-66	44	JC		MS are



MARK TMC PART NO.
(MS 4689) 1/8 HIGH GOTHIC
W/LATEST REV. LETTER,
ON REAR.

REQD.	ITEM	PART NUMBER	DESCRIPTION	SYMBOL
4	1	NT129-832-4	NUT, PLAIN, SPLINE	B

LIST OF MATERIAL		THE TECHNICAL MATERIEL CORP.	
MATERIAL		MAMARONECK, NEW YORK	
OG4 THICK ALUMINUM 5052-H32		TITLE PLATE, TOP, LOW PASS FILTER	
FINISH S404 YEL. IRIDITE		DRAWN MS	
UNLESS OTHERWISE SPECIFIED DIMENSIONS ARE IN INCHES AND INCLUDE CHEMICALLY APPLIED OR PLATED FINISHES		CHECKED MS	
DECIMALS X ± .05 XX ± .01 XXX ± .005		ELECT. DES. MS	
TOLERANCES FRACTIONS ± 1/64 ANGLES ± 0° 30'		DATE 7-22-65	
		DATE 3-2-66	
		DATE 3/3/66	
		FINAL APPROVAL MS	
		DATE MS 4689	
		SHEET Ø	
		REV. LTR.	

NOTES

QTY./UNIT	MODEL USED ON	ASSY. NO.
1	TST-10K	

SCALE 1/2:1

CODE A

THE CONTENTS OF THIS DRAWING ARE THE EXCLUSIVE PROPERTY OF THE TECHNICAL MATERIEL CORP. ITS UNAUTHORIZED USE OR REPRODUCTION IN WHOLE OR IN PART IS STRICTLY FORBIDDEN.

LOCATING
BASE LINE