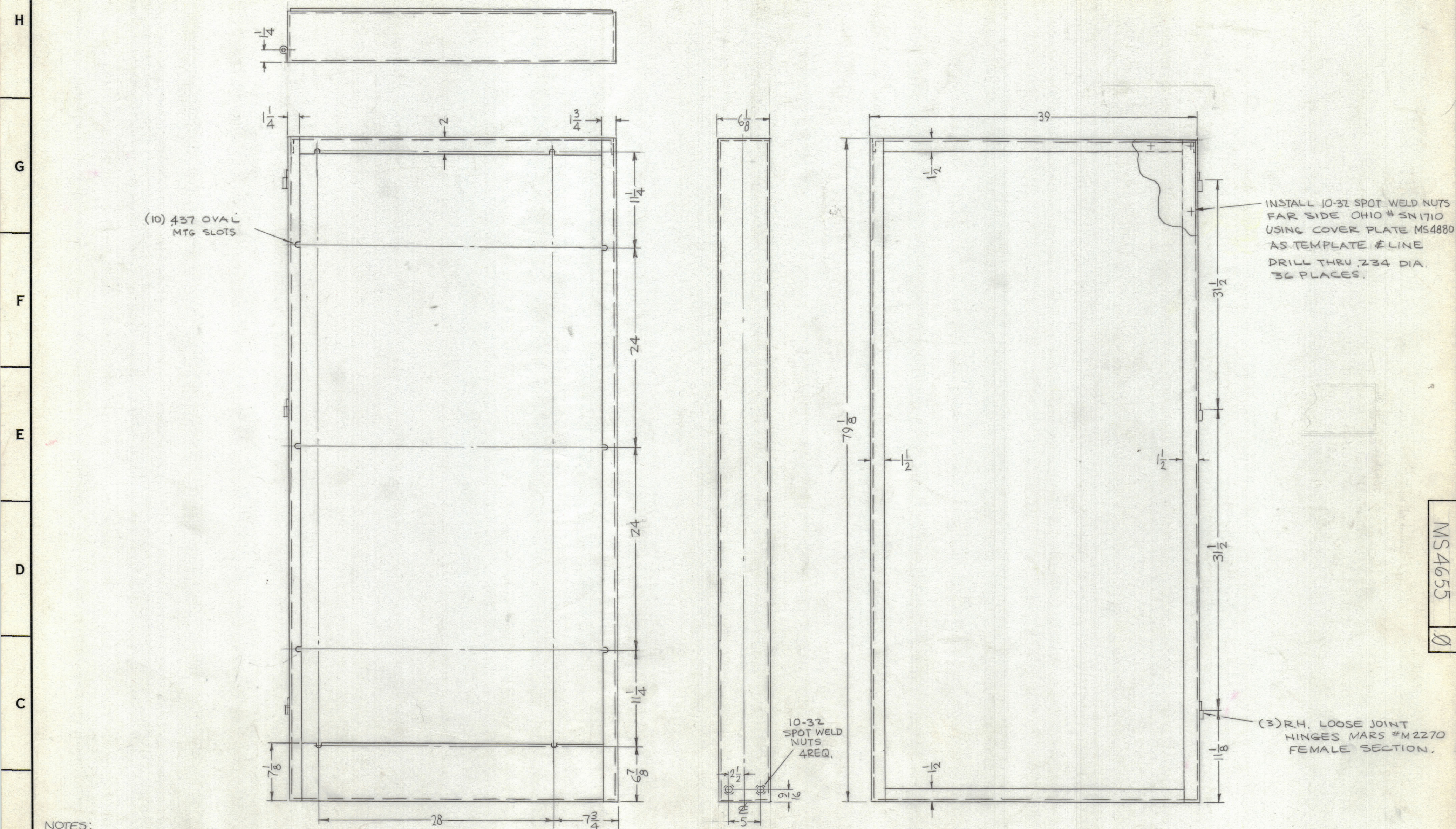
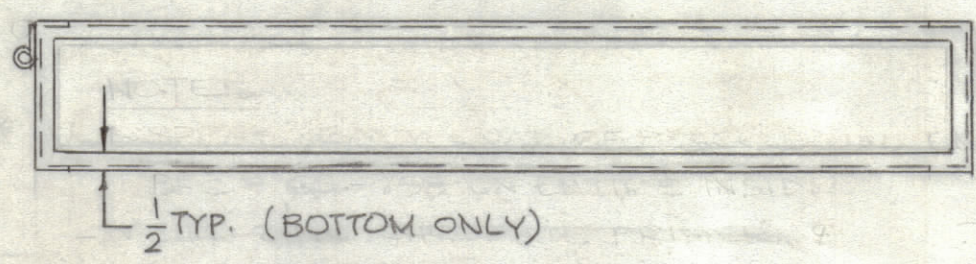


REVISIONS						
ZONE	SYM	DESCRIPTION	DATE	E.M.N. NO.	DRAFT	CHKD
Ø		ORIGINAL RELEASE FOR PRODUCTION	3-15-66	Ø	C.D.L.	



NOTES:  
 1~ SPRAY HEAVY COAT OF BLACK LIQUID ENVELOPE BFC#65-758 ON ENTIRE INSIDE.  
 \*2~ S114 ZINC CHROMATE PRIMER.  
 \*3~ 3520 BLUE-GRAY TEXT, VINYL PAINT.  
 4~ WELD & GRIND ALL SEAMS FLUSH.



\* OUTSIDE EDGES

NOTES

Q'TY/UNIT	MODEL USED ON	ASS'Y. NO.
1	GPT-ADKEC	
SCALE	CODE	
	C	

THE CONTENTS OF THIS DRAWING ARE THE EXCLUSIVE PROPERTY OF THE TECHNICAL MATERIEL CORP. ITS UNAUTHORIZED USE OR REPRODUCTION IN WHOLE OR IN PART IS STRICTLY FORBIDDEN.

REQ'D.	ITEM	PART NUMBER	DESCRIPTION	SYMBOL
REF. MS4880				
F. BUDETTI LIST OF MATERIAL				
MATERIAL		THE TECHNICAL MATERIEL CORP. MAMARONECK, NEW YORK		
16 GA STEEL		TITLE		
FINISH		PANEL, RIGHT SIDE FRAME		
SEE NOTES				
UNLESS OTHERWISE SPECIFIED DIMENSIONS ARE IN INCHES AND INCLUDE CHEMICALLY APPLIED OR PLATED FINISHES	DRAWN	DATE	FINAL APPROVAL	DATE
	3-14-66	3-14-66		3/15/66
DECIMALS .X ± .05 .XX ± .01 .XXX ± .005	TOLERANCES	FRACTIONS ± 1/64 ANGLES ± 0° 30'	ELECT. DES.	DATE
			MS4655	Ø
			MECH. DES.	DATE
			3/15/66	Ø
			SHEET	REV. LTR.

MS4655 Ø