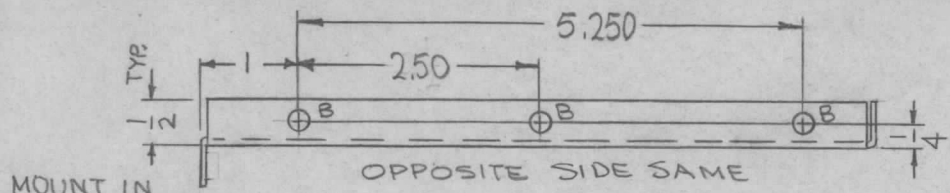
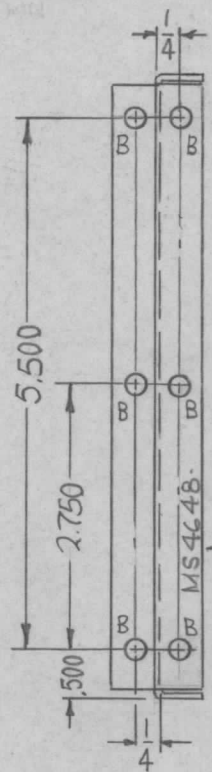
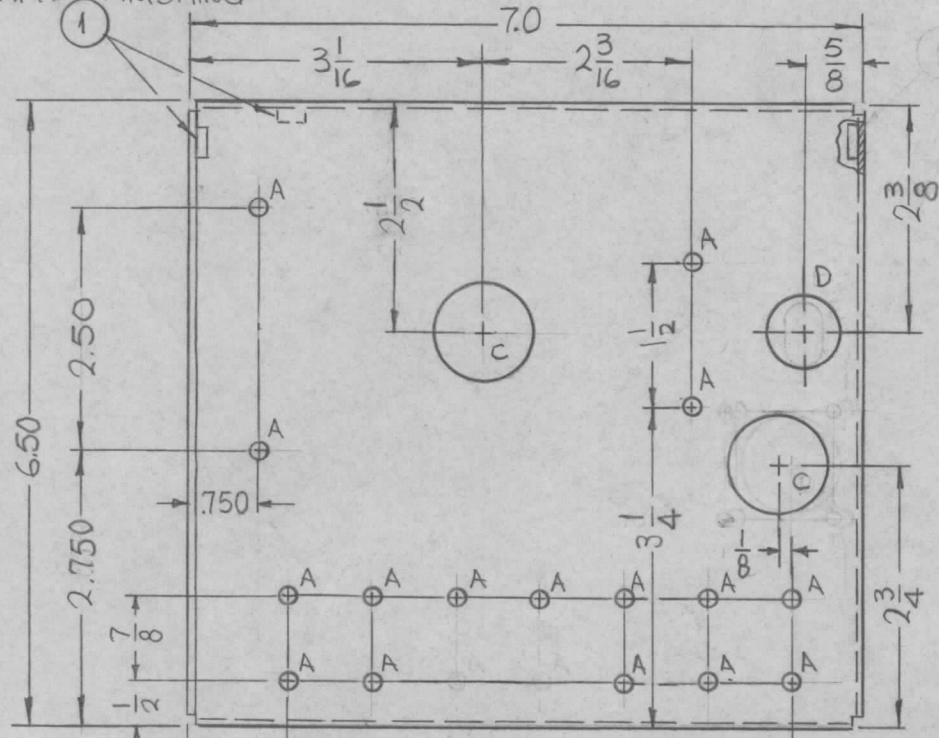


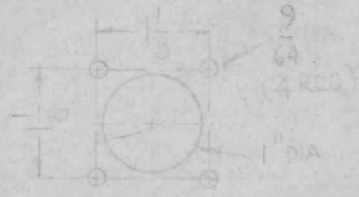
REQ. PER UNIT	USED ON			MS4648	Ø
	MODEL	ASS'Y. NO.	DATE		
1	TST-10K		6-24-65		



MOUNT IN ALL 'B' HOLES AFTER FINISHING



- HOLES: REQ:
- A - 11/64 DIA — 16
 - B - .191-.194 DIA. — 12
 - C - 1" DIA. — 2
 - D - 3/4 DIA. — 1
 - E - 5/16 DIA. SLOT — 1



METAL STAMP TMC P/N 1/8 HIGH GOTHIC W/LATEST REV. LETTER.

UNLESS OTHERWISE SPECIFIED:

1. USE MATERIAL THICKNESS FOR MAXIMUM RADIUS ON ALL BENDS
2. ALL ANGULAR BENDS 90 DEGREES
3. REMOVE ALL BURRS AND SHARP EDGES

Ø	ORIGINAL RELEASE	2/5/66				
X3	4, 9/64 HOLES DELETED HOLE LEGEND RE ARRANGED	8-13-65	X3			
X2	E HOLE WAS SLOT, D RELOCATED C & 4 TOP A HOLES DROPPED 1/8	8-2-65	X2			
X1	E SLOT ADDED, 2A HOLES DELETED	7-20-65	X1			
SYM	DESCRIPTION	DATE	CH. NO.	DRAFTS	CHECKER	ENG. APP.
UNLESS OTHERWISE SPECIFIED DIMENSIONS ARE IN INCHES AND INCLUDE CHEMICALLY APPLIED OR PLATED FINISHES		SCALE 1/2:1				
DECIMALS .X ± .05 .XX ± .01 .XXX ± .005	TOLERANCES	FRACTIONS ± 1/64 ANGLES ± 0° 30'	CODE A			

12	1	NT 129-632-4	NUT, PLAIN, SPLINE	B
REQ. ITEM		PART NO.	F. BUDETTI DESCRIPTION	SYMBOL
		.064 THICK	THE TECHNICAL MATERIEL CORP. MAMARONECK, NEW YORK	
		STOCK SIZE	SHIELD, MTG. CAPACITORS	
		ALUMINUM		
		MATERIAL		
		5052-H32	DRAWN	CHECKED
		TYPE & TEMPER	HEAT TREAT. SPEC.	FINAL APPROVAL
		S404 YEL IRIDITE		
		FINISH & SPEC. NO.	ELEC. DES. APP.	MECH. DES. APP.
				MS4648 Ø