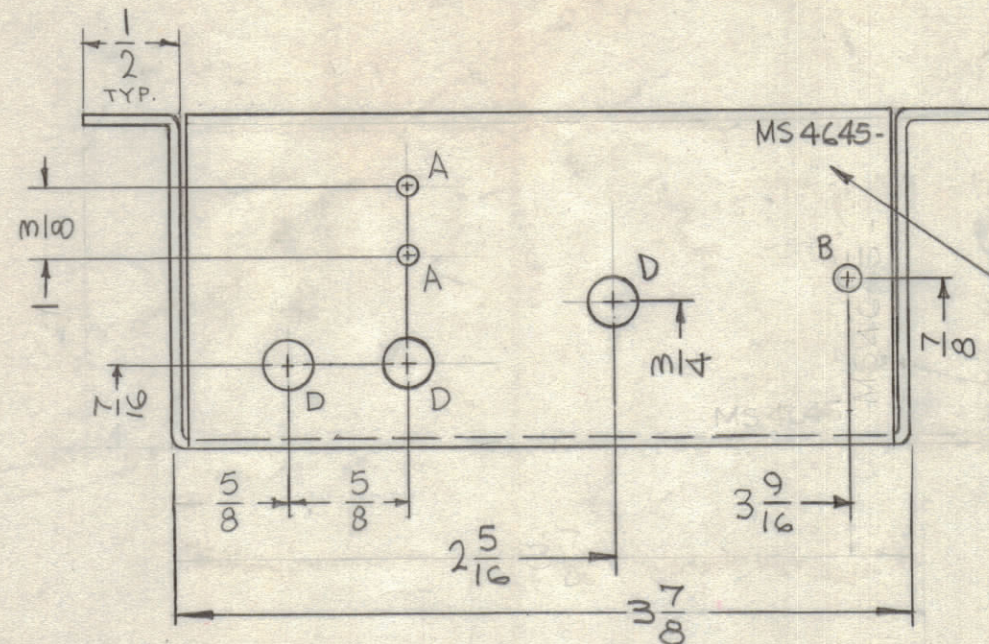
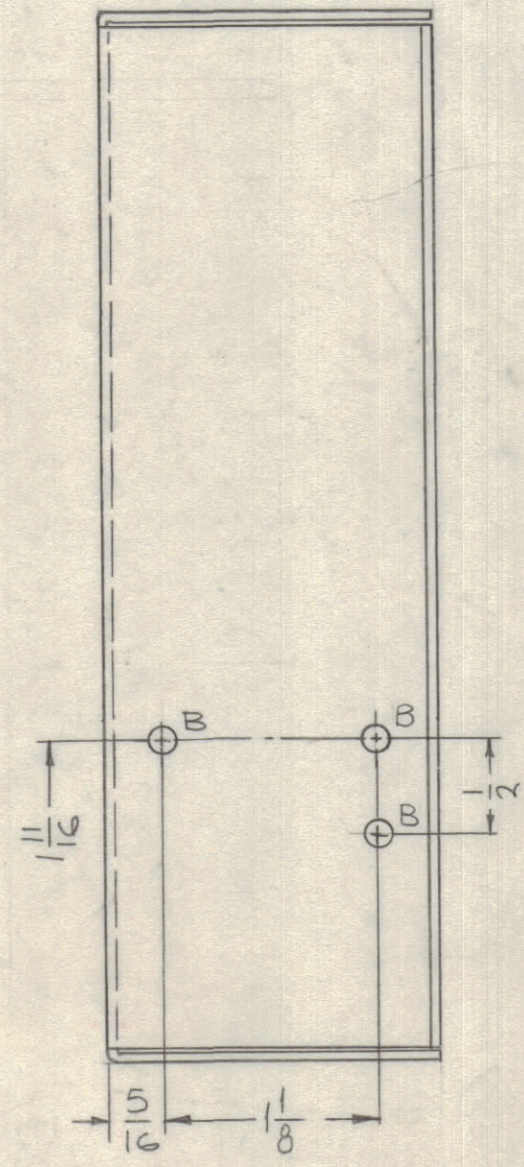
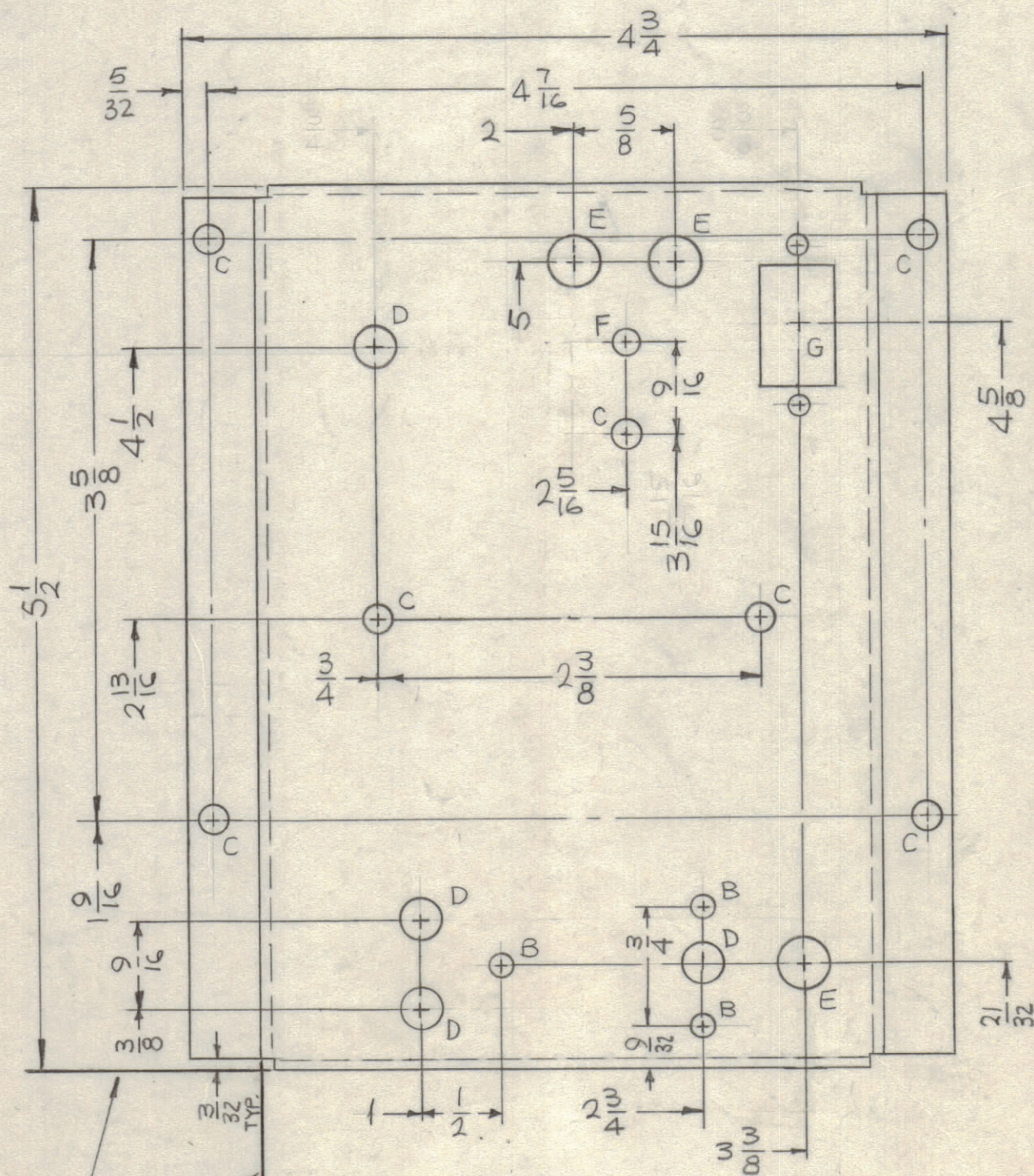
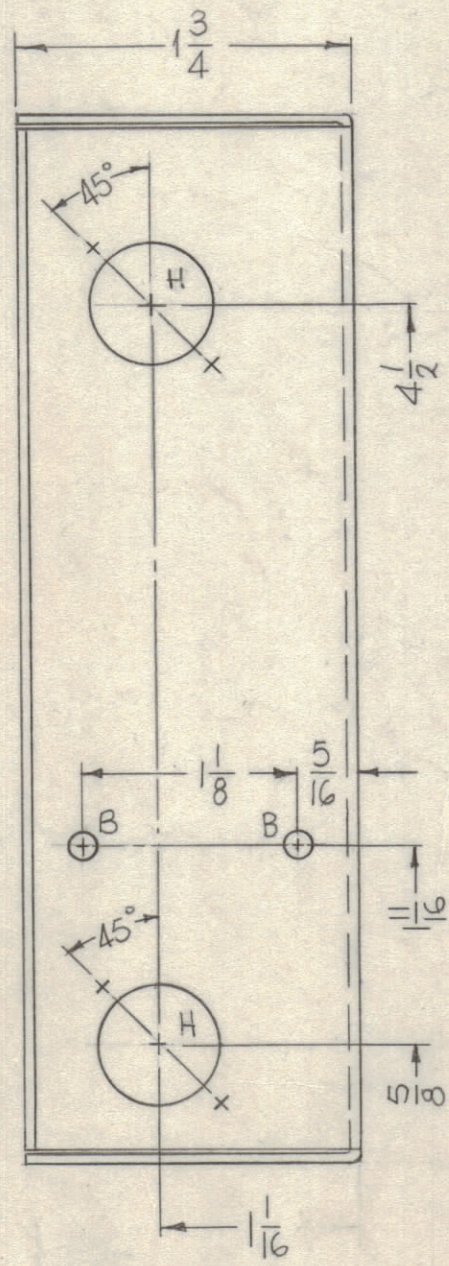


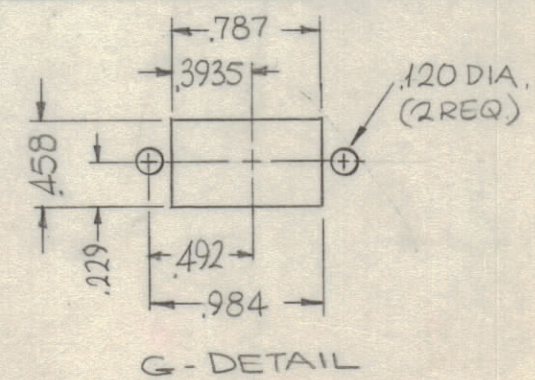
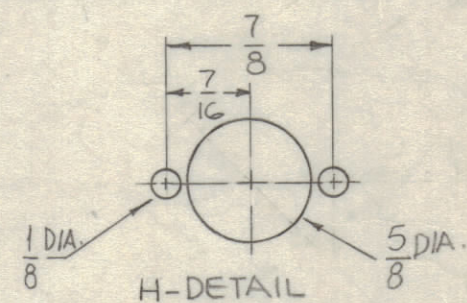
REVISIONS						
ZONE	SYM	DESCRIPTION	DATE	E.M.N. NO.	DRAFT	CHKD
	X1	1C, 1D, E, F HOLES ADDED, HOLE LEGEND RE-ARRANGED	9-8-65	X1	MS	JA
	X2	1 B HOLE ADDED	9-21-65	X2	MS	JA
	Ø	ORIGINAL RELEASE FOR PRODUCTION	3-3-66	-A	Jc	JB aa



METAL STAMP TMC P/N
1/8 HIGH GOTHIC W/LATEST
REV. LETTER.



HOLES	DESCRIPTION	REQ.
A	3/32 DIA.	2
B	9/64 DIA.	9
C	11/64 DIA.	7
D	1/4 DIA.	7
E	5/16 DIA.	3
F	.158 ^{+0.002} / _{-0.000} DIA.	1
G	SEE DETAIL	1
H	SEE DETAIL	2



LOCATING
BASE LINES

- UNLESS OTHERWISE SPECIFIED:
1. USE MATERIAL THICKNESS FOR MAXIMUM RADIUS ON ALL BENDS
 2. ALL ANGULAR BENDS 90 DEGREES
 3. REMOVE ALL BURRS AND SHARP EDGES

NOTES

1	TSP-10K	
QTY./UNIT	MODEL USED ON	ASS'Y. NO.
SCALE 1:1	CODE A	

THE CONTENTS OF THIS DRAWING ARE THE EXCLUSIVE PROPERTY OF THE TECHNICAL MATERIEL CORP. ITS UNAUTHORIZED USE OR REPRODUCTION IN WHOLE OR IN PART IS STRICTLY FORBIDDEN.

REF: LD 1954-

REQ'D.	ITEM	PART NUMBER	DESCRIPTION	SYMBOL
F. BUDETTI LIST OF MATERIAL				
MATERIAL		THE TECHNICAL MATERIEL CORP. MAMARONECK, NEW YORK		
FINISH		CHASSIS, SENSING		
UNLESS OTHERWISE SPECIFIED		DRAWN MS		
DIMENSIONS ARE IN INCHES AND INCLUDE		DATE 6-15-65		
CHEMICALLY APPLIED OR PLATED FINISHES		CHECKED JCB		
DECIMALS		DATE 9/10/65		
.X ± .05		DATE		
.XX ± .01		DATE		
.XXX ± .005		DATE 7/10/65		
FRACTIONS		FINAL APPROVAL MS4645		
± 1/64		DATE		
ANGLES		SHEET		
± 0° 30'		REV. LTR.		

MS4645
Ø