

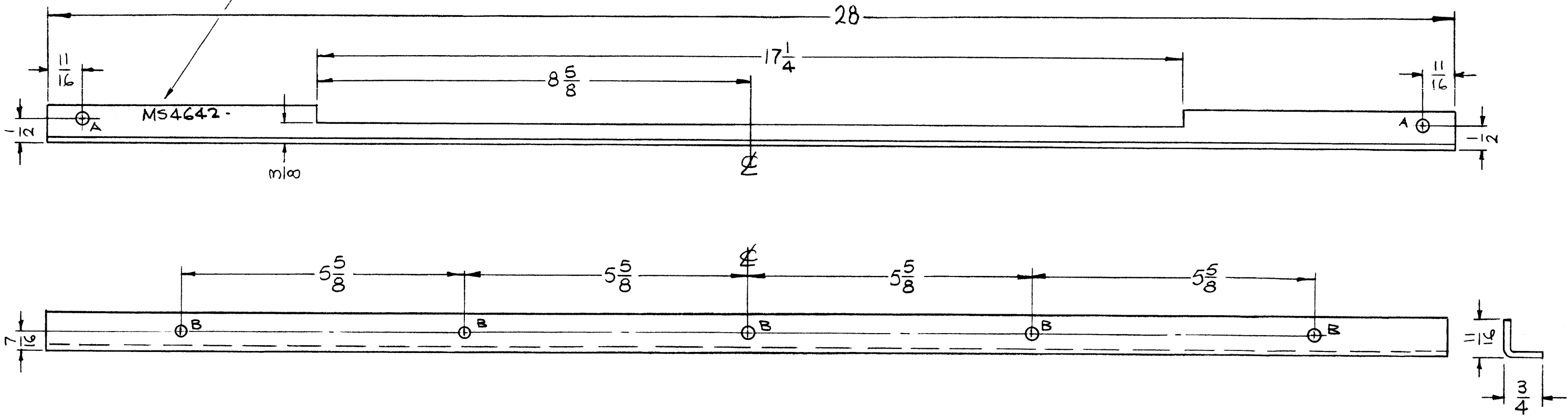
HOLES:

- A - 13/64 DIA. (2 REQ.)
- B - 3/16 DIA. (5 REQ.)

MS4642

REVISIONS						
SYM	DESCRIPTION	DATE	E.M.N. NO.	DRAFT	CHKD	APPD
Ø	ORIGINAL RELEASE FOR PRODUCTION	3-14-66	Ø	HLA		<i>[Signature]</i>

MARK TMC PART NO.
1/8 HIGH GOTHIC W/LATEST
REV. LETTER.



UNLESS OTHERWISE SPECIFIED:

1. USE MATERIAL THICKNESS FOR MAXIMUM RADIUS ON ALL BENDS
2. ALL ANGULAR BENDS 90 DEGREES
3. REMOVE ALL BURRS AND SHARP EDGES

NOTES

1	TSTE-10K	AP12G
QTY./UNIT	MODEL USED ON	ASS'Y. NO.
SCALE 1/2"	CODE A	

THE CONTENTS OF THIS DRAWING ARE THE EXCLUSIVE PROPERTY OF THE TECHNICAL MATERIEL CORP. ITS UNAUTHORIZED USE OR REPRODUCTION IN WHOLE OR IN PART IS STRICTLY FORBIDDEN.

REQ'D.	ITEM	PART NUMBER	DESCRIPTION	SYMBOL
F. BUDETTI LIST OF MATERIAL				
MATERIAL 1/8 THICK ALUMINUM 5052-H32			THE TECHNICAL MATERIEL CORP. MAMARONECK, NEW YORK	
FINISH S404 YEL. IRIDITE			TITLE STIFFENER, FRONT PANEL	
UNLESS OTHERWISE SPECIFIED DIMENSIONS ARE IN INCHES AND INCLUDE CHEMICALLY APPLIED OR PLATED FINISHES				
DECIMALS .X ± .05 .XX ± .01 .XXX ± .005	TOLERANCES		FRACTIONS ± 1/64 ANGLES ± 0° 30'	
DRAWN <i>[Signature]</i>	DATE 6-22-65	FINAL APPROVAL <i>[Signature]</i>		DATE 3/14/66
CHECKED <i>[Signature]</i>	DATE 3-9-66	MS4642		Ø
ELECT. DES.	DATE	SHEET		REV. LTR.
MECH. DES. <i>[Signature]</i>	DATE 3/14/66			