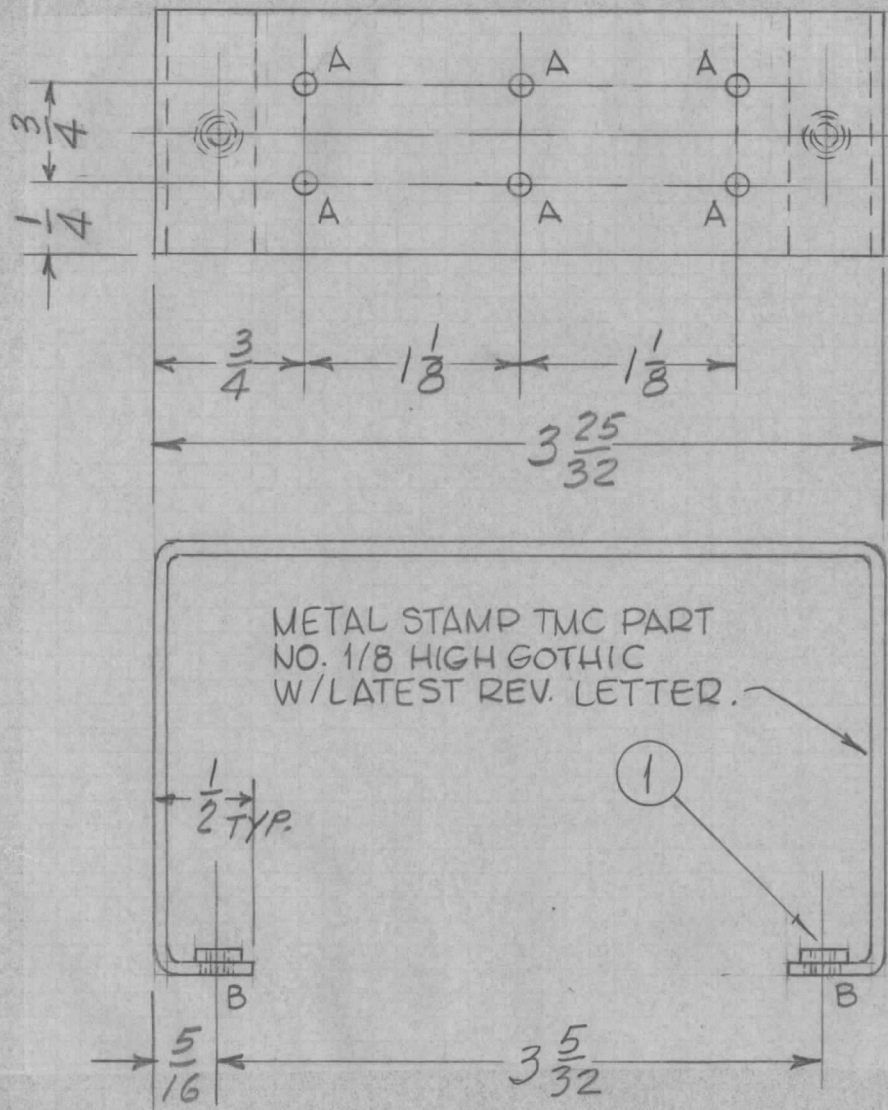


REQ. PER UNIT	USED ON			MS4640 A
	MODEL	ASS'Y. NO.	DATE	
6	LRCM-1	AX568	6-22-65	

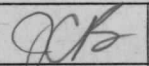



HOLES	REQ.
A-1/8 DIA.	6
B-.191-.194 DIA.	2
C-13/64 DIA.	2

UNLESS OTHERWISE SPECIFIED:

1. USE MATERIAL THICKNESS FOR MAXIMUM RADIUS ON ALL BENDS.
2. ALL ANGULAR BENDS 90°.
3. REMOVE ALL BURRS AND SHARP EDGES.
4. MOUNT INSERTS AFTER FINISHING.

REF. LD1953

						2	1	NT129-632-4	NUT, ROUND, SPLINE		
						REQ. ITEM		PART NO.	ZETENA	DESCRIPTION	SYMBOL
								.062 THICK	THE TECHNICAL MATERIEL CORP. MAMARONECK, NEW YORK		
								ALUMINUM	BRACKET, RESISTOR MOUNTING		
								MATERIAL			
								5052-H32	DC	  6/22/65	
						TYPE & TEMPER	HEAT TREAT. SPEC.	DRAWN	CHECKED	FINAL APPROVAL	
						S404-IRIDITE, 14-2 AL-COAT				MS4640 A	
						FINISH & SPEC. NO.		ELEC. DES. APP.	MECH. DES. APP.		

A	SIDE VIEW, 2" HOLES ADDED	10/1/65	14959	REV.	JCB	JCB
Ø	ORIGINAL RELEASE FOR PRODUCTION	6-22-65			JC	
SYM	DESCRIPTION	DATE	CH. NO.	DRAFTS	CHECKER	ENG. APP.
UNLESS OTHERWISE SPECIFIED DIMENSIONS ARE IN INCHES AND INCLUDE CHEMICALLY APPLIED OR PLATED FINISHES		SCALE				
DECIMALS	FRACTIONS	CODE				
.x ± .05	± 1/64	TOLERANCES				
.xx ± .01	ANGLES					
.xxx ± .005	± 0° 30'					