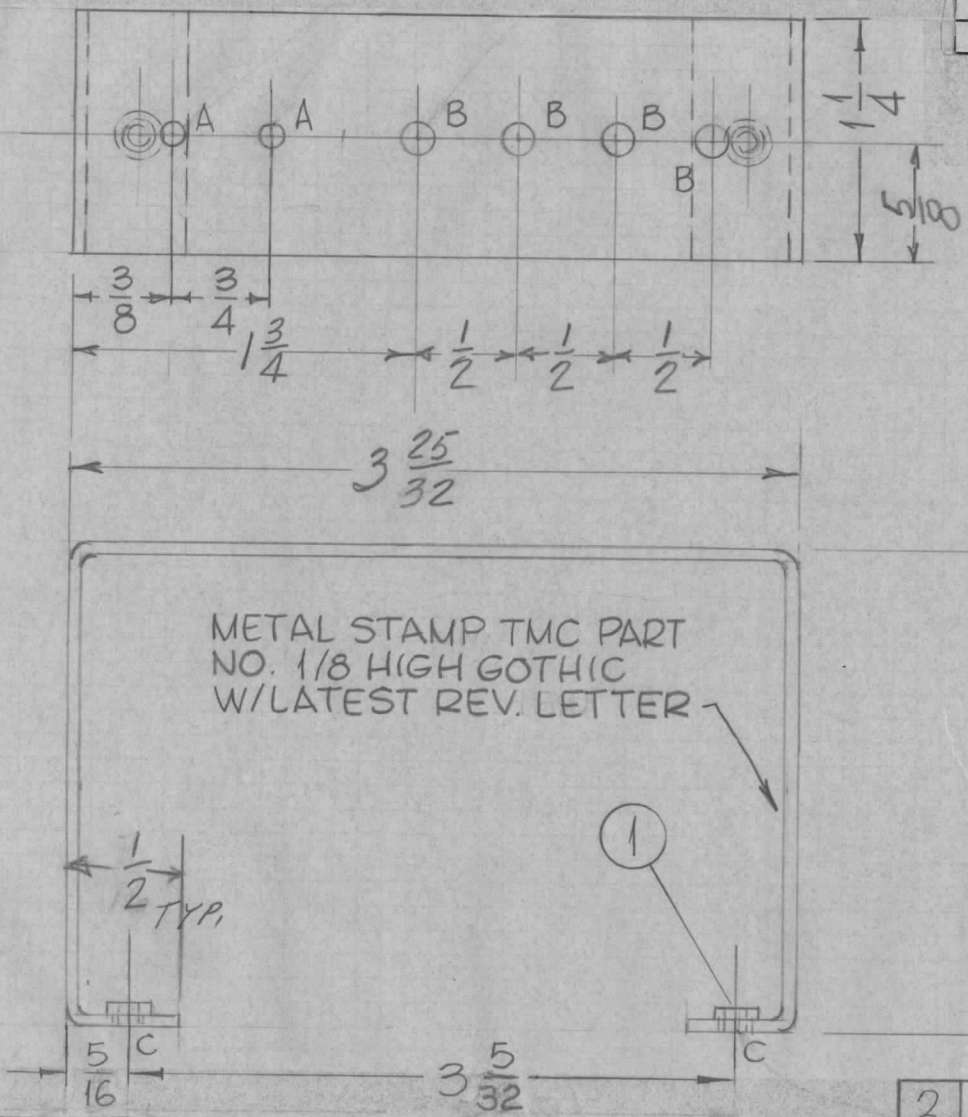


REQ. PER UNIT 8	USED ON			MS4639	A
	MODEL LRCC-1	ASS'Y. NO.	DATE		



HOLES	REQ.
A- 1/8 DIA.	2
B- 9/64 DIA.	4
C-.191-.194 DIA.	2

- UNLESS OTHERWISE SPECIFIED:
1. USE MATERIAL THICKNESS FOR MAXIMUM RADIUS ON ALL BENDS
 2. ALL ANGULAR BENDS 90 DEGREES
 3. REMOVE ALL BURRS AND SHARP EDGES
 4. MOUNT INSERTS AFTER FINISHING

REF-LD1952

		2	1	NT129-632-4	NUT, ROUND, SPLINE				
		REQ. ITEM	PART NO.		ZETENA	DESCRIPTION	SYMBOL		
		.062 THICK			THE TECHNICAL MATERIEL CORP.				
		STOCK SIZE			MAMARONECK, NEW YORK				
A	3 5/32 DIM WAS 3 5/8	8-4-65	14490	DVU	BRACKET, RESISTOR MOUNTING				
Ø	ORIGINAL RELEASE FOR PRODUCTION	6-22-65	AA						
SYM	DESCRIPTION	DATE	CH. NO.	DRAFTS	CHECKER	ENG. APP.			
UNLESS OTHERWISE SPECIFIED DIMENSIONS ARE IN INCHES AND INCLUDE CHEMICALLY APPLIED OR PLATED FINISHES		SCALE							
DECIMALS	FRACTIONS	CODE							
.X ± .05	± 1/64								
.XX ± .01	ANGLES								
.XXX ± .005	± 0° 30'								
TOLERANCES									
		5052-H32		HEAT TREAT. SPEC.		DC	DRAWN		
		S404-IRIDITE, 14-2 ALCOAT		FINISH & SPEC. NO.		CHECKED		FINAL APPROVAL	
						ELEC. DES. APP.		MECH. DES. APP.	
								MS4639 A	