

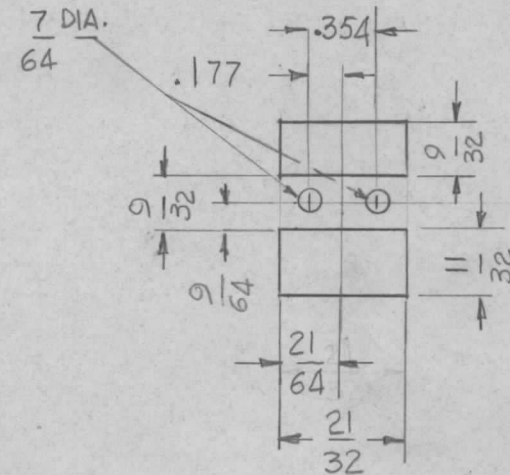
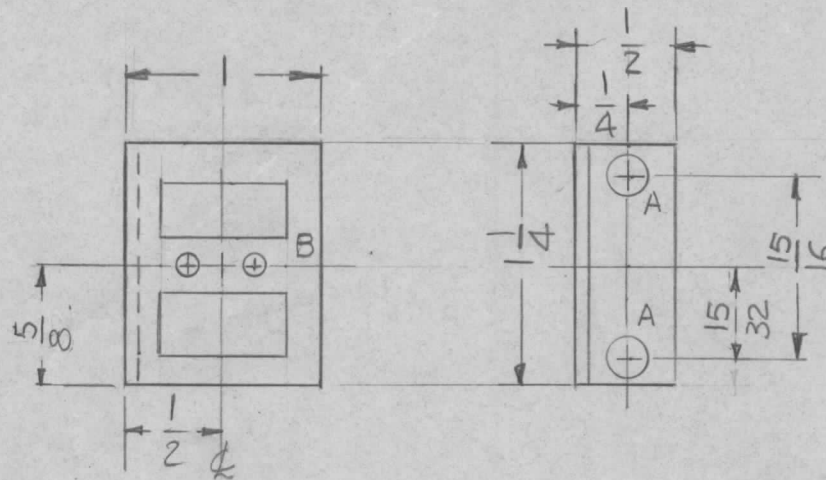
REQ. PER UNIT	USED ON		
	MODEL	ASS'Y. NO.	DATE
1	TST-10K	AZ 107	7-16-65
1	TST-10K	AZ 108	7-29-65
1	TST-10K	AZ 105	7-29-65

MS4637  $\emptyset$

HOLES - REQ.

A - 13/64 DIA 2

B - SEE DETAIL 1



DETAIL "B"  
1REQ

UNLESS OTHERWISE SPECIFIED:

1. USE MATERIAL THICKNESS FOR MAXIMUM RADIUS ON ALL BENDS
2. ALL ANGULAR BENDS 90 DEGREES
3. REMOVE ALL BURRS AND SHARP EDGES

SYM	DESCRIPTION	DATE	CH. NO.	DRAFTS	CHECKER	ENG. APP.	REQ. ITEM	PART NO.	F. BUDETTI DESCRIPTION	SYMBOL		
$\emptyset$	ORIGINAL RELEASE	3/15/66										
X3	DIM. 5/8 WAS 11/32	8-10-65	X3	G.D.L.	DR			.064 THK	THE TECHNICAL MATERIEL CORP. MAMARONECK, NEW YORK	BRACKET MTG. RELAY		
X2	ASS'Y NO'S ADDED	7-29-65	X2	SPB				STOCK SIZE				
X1	REVISED & REDRAWN	7-15-65	X1	G.D.L.	DR			ALUMINUM				
								MATERIAL				
	UNLESS OTHERWISE SPECIFIED DIMENSIONS ARE IN INCHES AND INCLUDE CHEMICALLY APPLIED OR PLATED FINISHES	SCALE	1:1						5052-H32	G.D.L.	QC/B	DR
	DECIMALS .X $\pm$ .05 .XX $\pm$ .01 .XXX $\pm$ .005	FRACTIONS $\pm$ 1/64 ANGLES $\pm$ 0° 30'	CODE	A						DRAWN	CHECKED	FINAL APPROVAL
	TOLERANCES							S404 YEL. IRIDITE		aa	MS4637 $\emptyset$	
								FINISH & SPEC. NO.	ELEC. DES. APP.	MECH. DES. APP.		