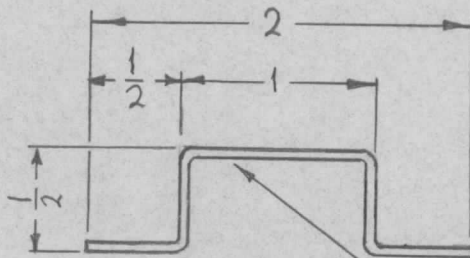
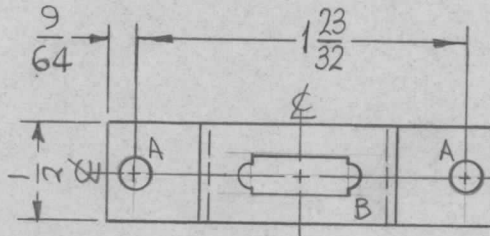


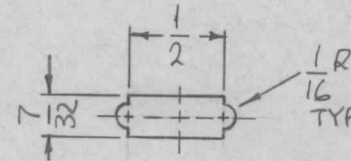
REQ. PER UNIT	USED ON			MS4636 \emptyset
	MODEL	ASS'Y. NO.	DATE	
1	RFTA-1		6-15-65	



HOLES:
 A ~ 5/32 DIA. (2 REQ.)
 B ~ SEE DETAIL



MARK TMC P/N (MS4636)
 1/8 HIGH GOTHIC
 W/LATEST REV.
 LETTER.



B-DETAIL

UNLESS OTHERWISE SPECIFIED:

1. USE MATERIAL THICKNESS FOR MAXIMUM RADIUS ON ALL BENDS
2. ALL ANGULAR BENDS 90 DEGREES
3. REMOVE ALL BURRS AND SHARP EDGES.

REF: LD1951

							REQ. ITEM	PART NO.	F. BUDETTI	DESCRIPTION	SYMBOL
							.064 THICK			THE TECHNICAL MATERIEL CORP.	
							STOCK SIZE			MAMARONECK, NEW YORK	
\emptyset	ORIGINAL RELEASE	4/15/66					ALUMINUM			BRACKET, MTG. CONNECTOR	
SYM	DESCRIPTION	DATE	CH. NO.	DRAFTS	CHECKER	ENG. APP.	MATERIAL				
UNLESS OTHERWISE SPECIFIED DIMENSIONS ARE IN INCHES AND INCLUDE CHEMICALLY APPLIED OR PLATED FINISHES		SCALE					5052-H32		<i>SPS</i>	<i>JCS</i>	<i>M. J. Hay</i>
DECIMALS	FRACTIONS	CODE					TYPE & TEMPER	HEAT TREAT. SPEC.	DRAWN	CHECKED	FINAL APPROVAL
.X \pm .05	\pm 1/64	A					S404 YEL. IRIDITE			<i>OU</i>	MS4636 \emptyset
.XX \pm .01	ANGLES						FINISH & SPEC. NO.		ELEC. DES. APP.	MECH. DES. APP.	
.XXX \pm .005	\pm 0° 30'										