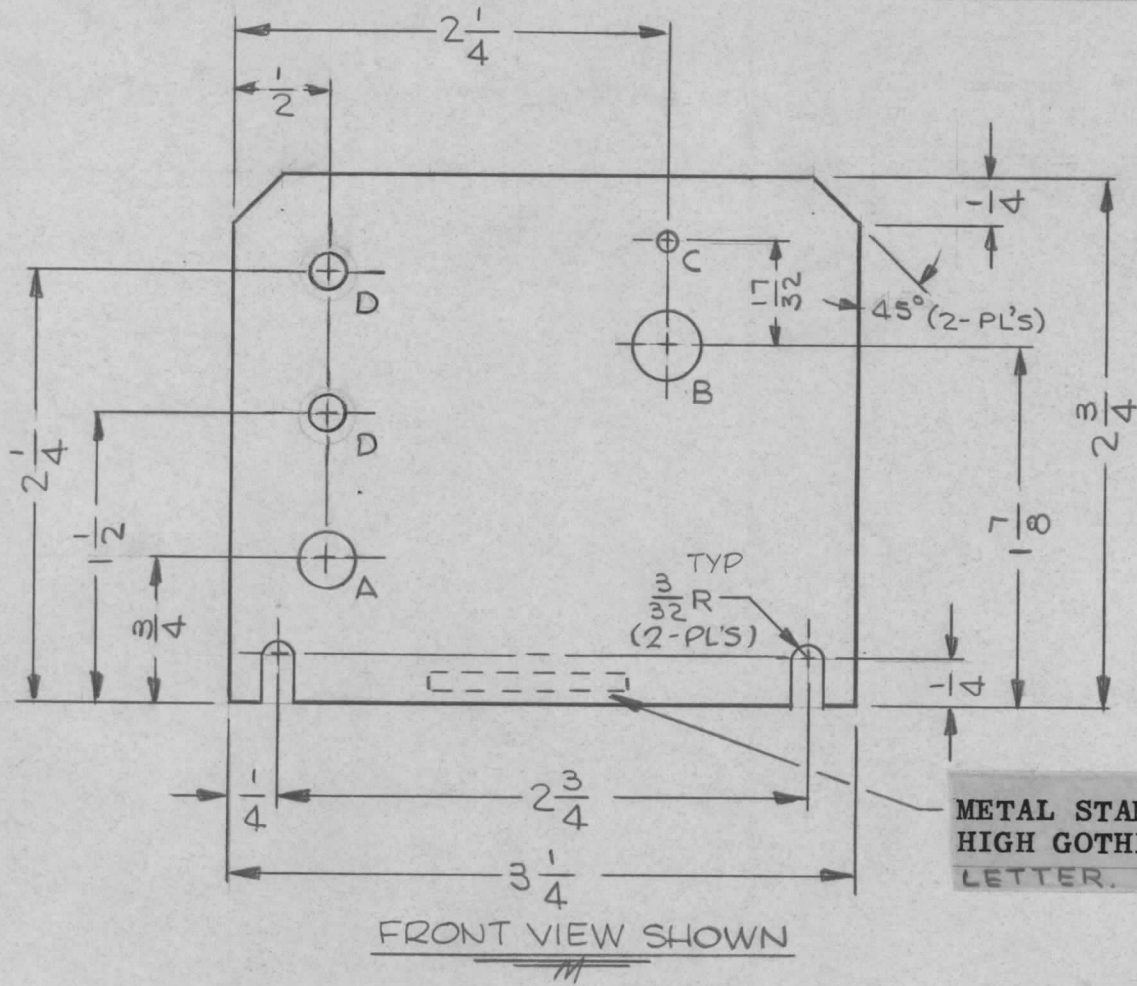


REQ. PER UNIT	USED ON		MS4634 A
	MODEL	DATE	
1	RAK-22B	6-17-65	



HOLE LEGEND		
HOLE	DESCRIPTION	REQ'D
A	5/16 DIA	1
B	3/8 DIA	1
C	1/8 DIA	1
D	17/64 DIA.	2

METAL STAMP TMC PART NO. 1/8  
HIGH GOTHIC ON REAR OF BRACKET W/LATEST REV.  
LETTER.

FRONT VIEW SHOWN

REF: LD1948

SYM	DESCRIPTION	DATE	CH. NO.	DRAFTS	CHECKER	ENG. APP.	REQ. ITEM	PART NO.	EATON	DESCRIPTION	SYMBOL	
A	2 "A" HOLES DELETED HOLES ADDED ORIGINAL RELEASE FOR PRODUCTION	1/28/65	14361	D.V.K.	JCB	MMH	.064 THK			THE TECHNICAL MATERIEL CORP. MAMARONECK, NEW YORK		
Ø		6-24-65		D.V.K.			STOCK SIZE					
X	EXPERIMENTAL RELEASE	6-10-65		JC			ALUMINUM			MTG BRACKET, RESISTOR		
							MATERIAL					
	UNLESS OTHERWISE SPECIFIED DIMENSIONS ARE IN INCHES AND INCLUDE CHEMICALLY APPLIED OR PLATED FINISHES	SCALE	1/1				5052-H32		JL	JCB	J.E. Eaton 6/24/65	
	DECIMALS .X ± .05 .XX ± .01 .XXX ± .005	TOLERANCES	FRACTIONS ± 1/64 ANGLES ± 0° 30'	CODE			TYPE & TEMPER YELLOW IRIDITE PER S404	HEAT TREAT. SPEC.	DRAWN	CHECKED	FINAL APPROVAL	
							FINISH & SPEC. NO.		ELEC. DES. APP.	MECH. DES. APP.	MS4634 A	