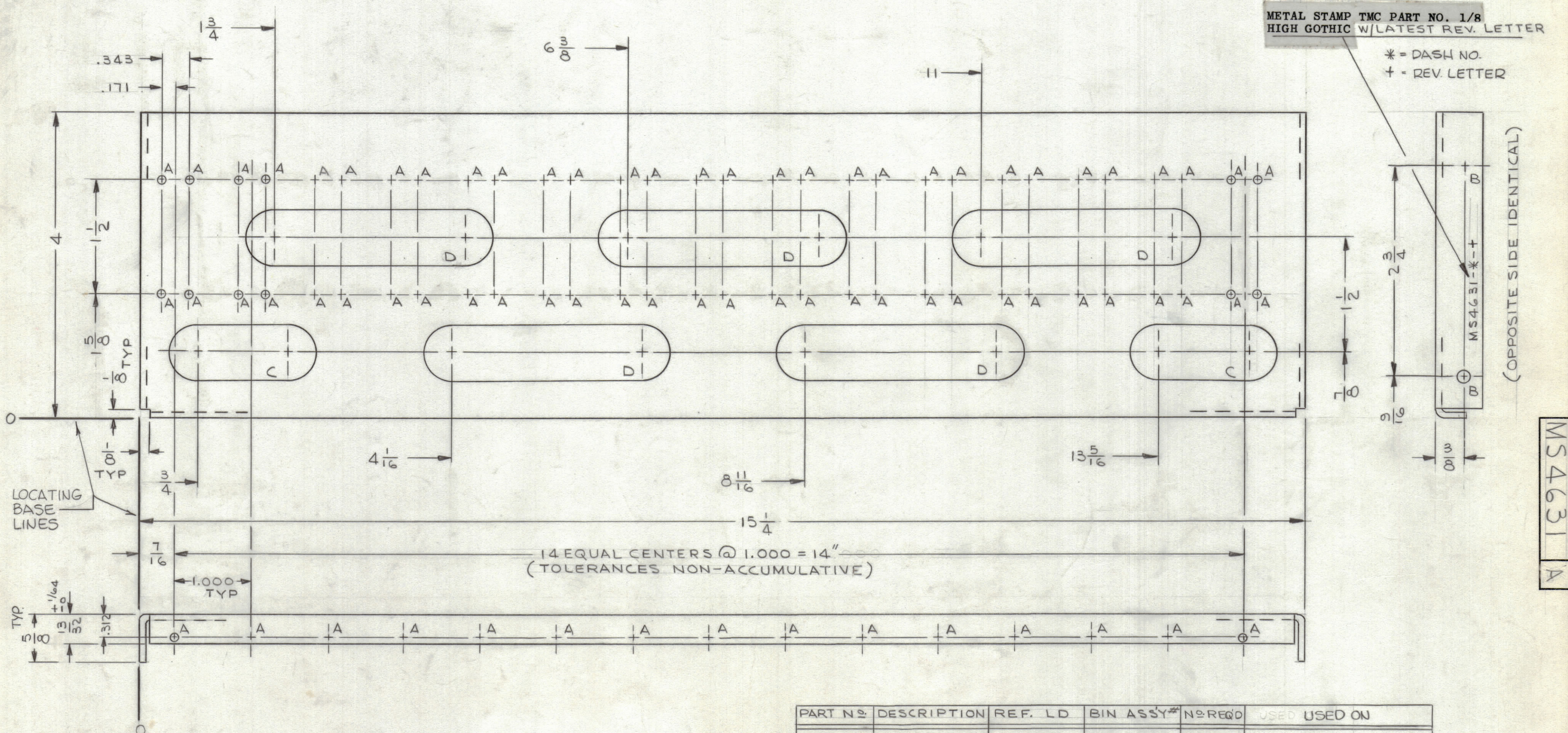
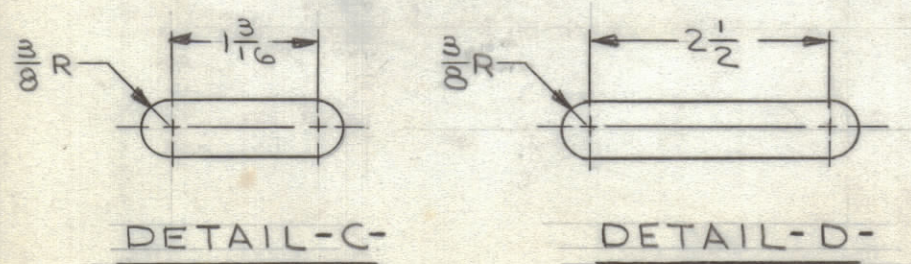


REVISIONS						
ZONE	SYM	DESCRIPTION	DATE	E.M.N. NO.	DRAFT	CHKD APPD
	X <sub>2</sub>	REDRAWN & REVISED FROM 2 SIZE	6/25/65		JL	
	X <sub>3</sub>	ON CHART "USED ON" COLUMN ADDED, REF. LD <sup>1</sup>	7-16-65	-M	JC	
	Ø	ORIGINAL RELEASE FOR PRODUCTION	8/24/65	Ø	AVV	
	A	CLERICAL CHANGE	12/29/65	CC	A.V.V.	JCB



HOLE LEGEND		
HOLE	DESCRIPTION	REQ'D
A	1/8 (.1250) DIA	75
B	3/16 DIA	4
C	SEE DETAIL	2
D	SEE DETAIL	5

PART NO.	DESCRIPTION	REF. LD	BIN ASSY#	NO REQ'D	USED USED ON
MS4631-1	AS DRAWN	NONE	A5106	1	RTID-1, RTIE-1, RTIF-1, RTIG-1
MS4631-2	OPPOS. HAND	LD1873	A5104	1	RTID-1
		LD1949	A5105	1EA.	RTID-1, RTIE-1, RTIF-1, RTIG-1
		LD1961		1EA.	RTIE-1, RTIG-1
		LD1964		1	RTIF-1, RTIA-1
		LD2011		1	RTIA-1



UNLESS OTHERWISE SPECIFIED:

- USE MATERIAL THICKNESS FOR MAXIMUM RADIUS ON ALL BENDS
- ALL ANGULAR BENDS 90 DEGREES
- REMOVE ALL BURRS AND SHARP EDGES

NOTES

SEE CHART	RTIA-1	SEE CHART	FEATON	LIST OF MATERIAL	
SEE CHART	RTIG-1	SEE CHART	MATERIAL	THE TECHNICAL MATERIEL CORP.	
SEE CHART	RTIF-1	SEE CHART	.081 THK ALUMINUM	MAMARONECK, NEW YORK	
	RTIE-1		5052-H32	TITLE	
	RTID-1		FINISH	PLATE, SIDE, P.C. CARD BIN	
			S404 YELLOW IRIDITE		
Q'TY./UNIT	MODEL USED ON	ASSY. NO.	UNLESS OTHERWISE SPECIFIED		
SCALE	CODE		DIMENSIONS ARE IN INCHES AND INCLUDE CHEMICALLY APPLIED OR PLATED FINISHES		
1/1	A		DRAWN J.L.		
THE CONTENTS OF THIS DRAWING ARE THE EXCLUSIVE PROPERTY OF THE TECHNICAL MATERIEL CORP. ITS UNAUTHORIZED USE OR REPRODUCTION IN WHOLE OR IN PART IS STRICTLY FORBIDDEN.			DATE 6/25/65		
			CHECKED JCB		
			DATE 6-29-65		
			ELECT. DES. W. JORDAN		
			DATE 6/29/65		
			MECH. DES. W. JORDAN		
			DATE 6/29/65		
			SHEET		
			REV. LTR.		

MS4631-A

(OPPOSITE SIDE IDENTICAL)