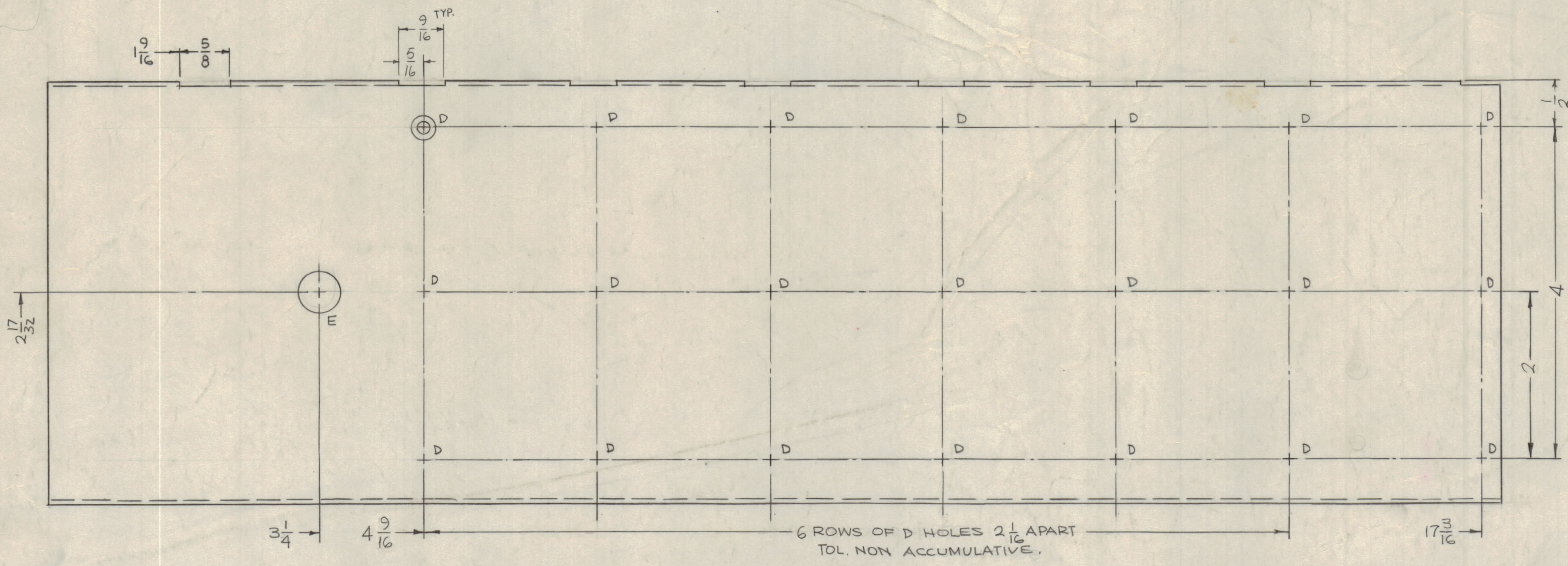
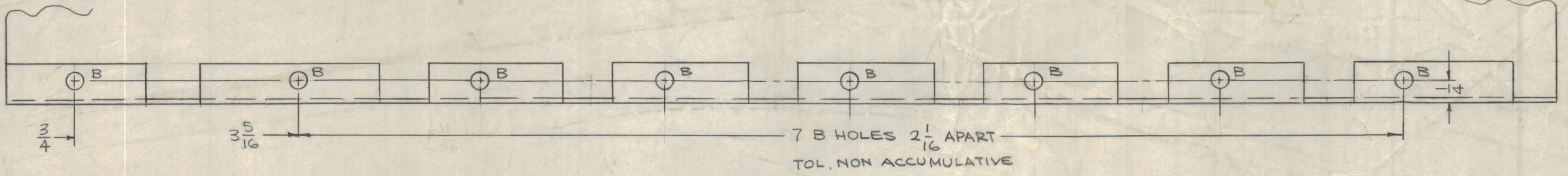
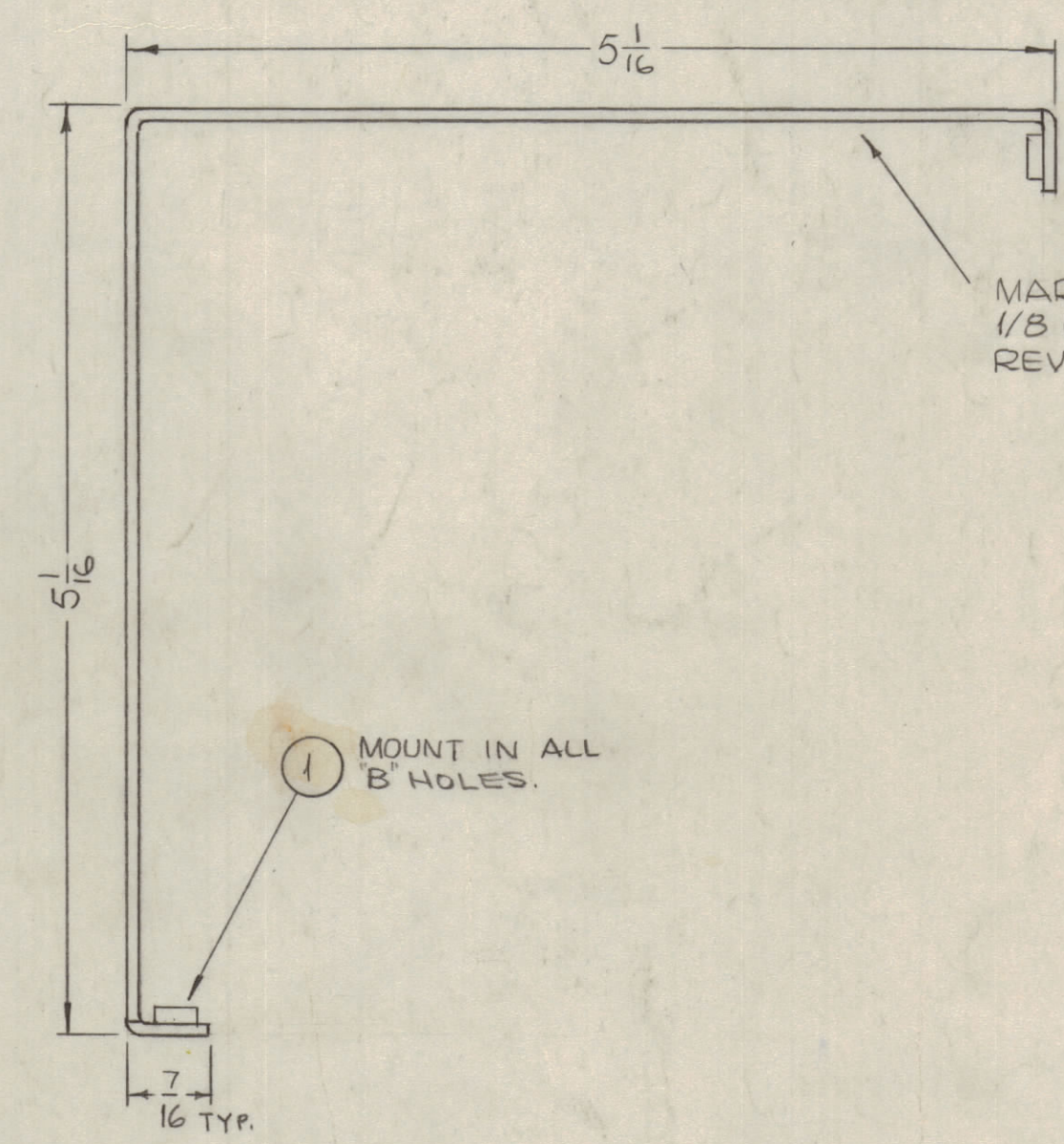
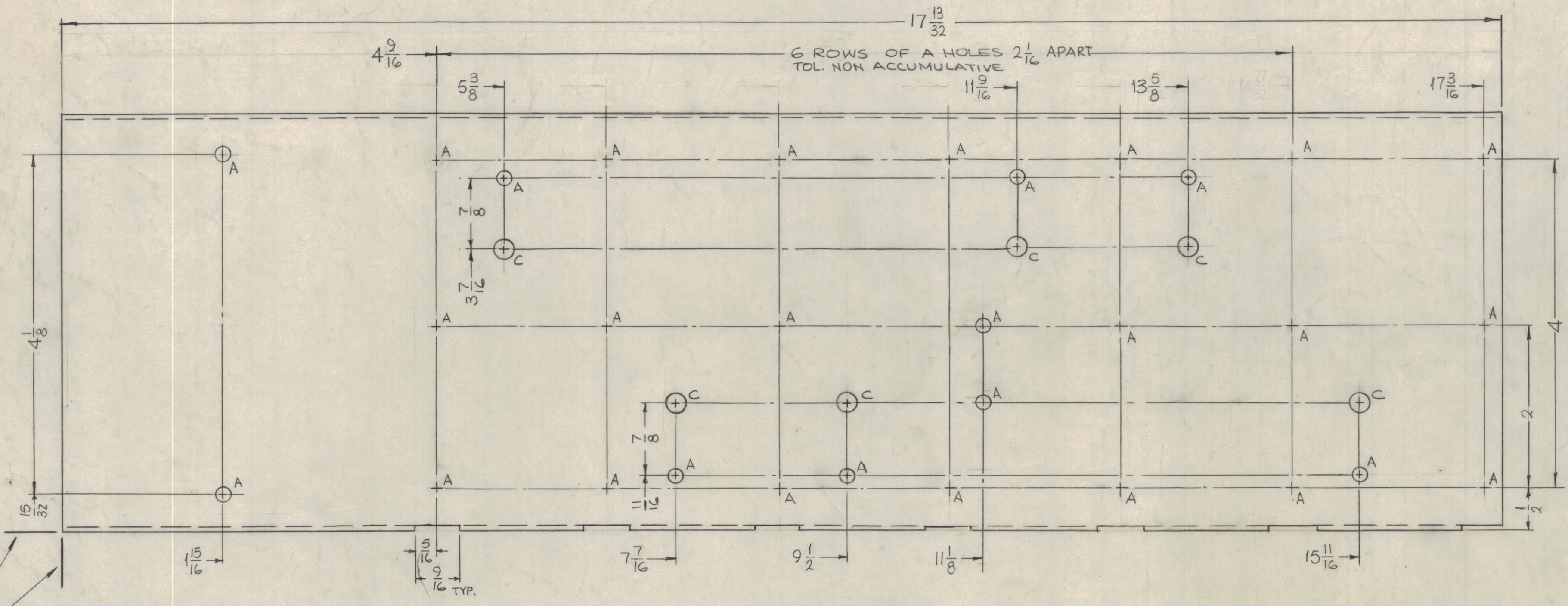


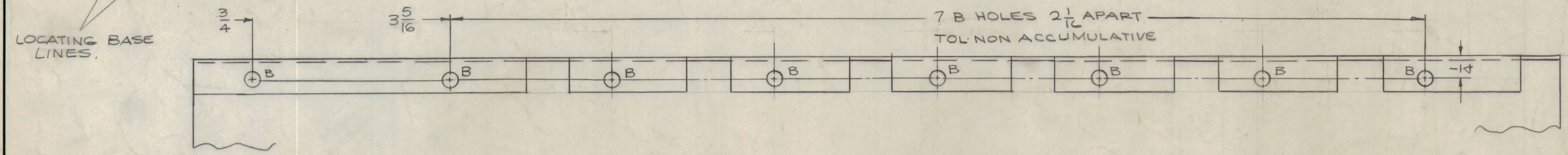
REVISIONS						
ZONE	SYM	DESCRIPTION	DATE	E.M.N. NO.	DRAFT	CHKD
X1		5/8 CUTOUT ADDED, 1A HOLE DELETED	6-22-65	X1		
X2		CHANGED TITLE, ADDED S423 TO FINISH	7-1-65	X2		
		ORIGINAL RELEASE FOR PRODUCTION	8-14-66			



HOLES	DESCRIPTION	REQ.
A	11/64 DIA.	30
B	.191-.194 DIA.	16
C	15/64	6
D	DR.144 DIA. C'SINK 82° TO .284 D.	21
E	1/2 DIA.	1



- UNLESS OTHERWISE SPECIFIED:
1. USE MATERIAL THICKNESS FOR MAXIMUM RADIUS ON ALL BENDS
 2. ALL ANGULAR BENDS 90 DEGREES
 3. REMOVE ALL BURRS AND SHARP EDGES
 4. MOUNT INSERTS AFTER FINISHING



LOCATING BASE LINES.

QTY./UNIT	TST-10K	ASB. NO.
SCALE	1:1	
MODEL USED ON	A	

REV.	ITEM	PART NUMBER	DESCRIPTION	SYMBOL
1G	1	NT129-632-4	NUT, PLAIN, SPLINE	B

LIST OF MATERIAL	
MATERIAL	THE TECHNICAL MATERIEL CORP. MAMARONECK, NEW YORK
FINISH	CHASSIS, FIXED FILTER

SCALE	DATE	FINAL APPROVAL	DATE
1:1	6-14-65	[Signature]	3/1/66
	7-2-66	[Signature]	

DECIMALS	FRACTIONS	ELECT. DES.	DATE
.XX ± .01	± 1/64		
.XXX ± .005	ANGLES ± 0° 30'		

NOTES

MS4624