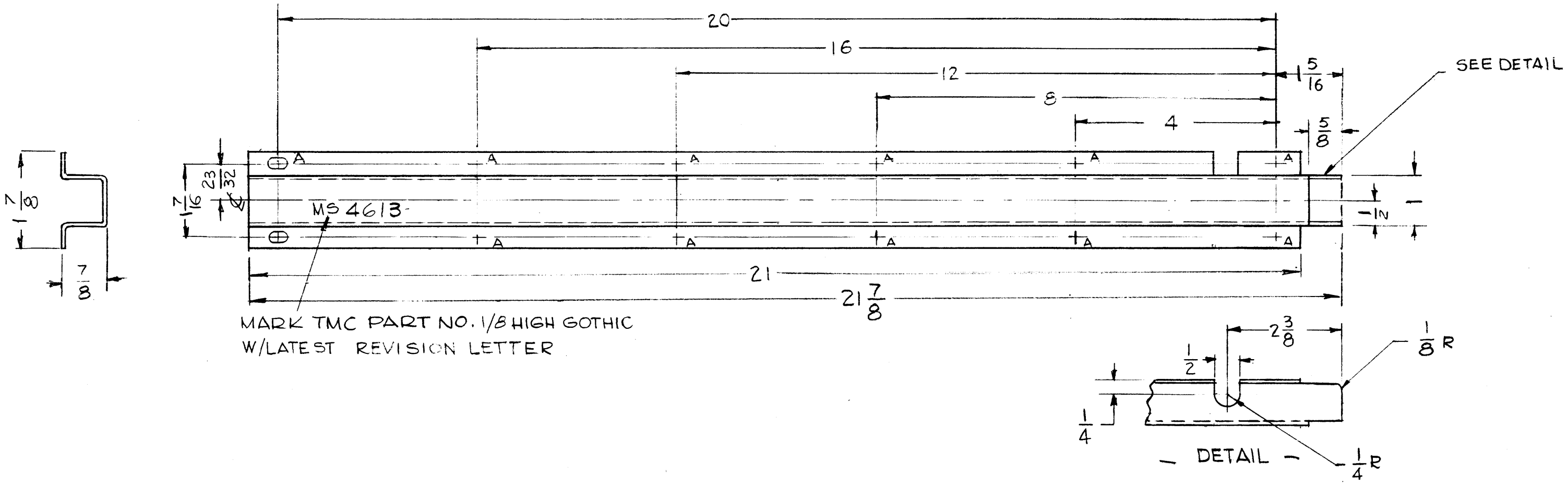


SYM	DESCRIPTION	DATE	E.M.N. NO.	DRAFT	CHKD	APPD
XI	THE NOTCH WAS ON OPPOSITE SIDE - DIM. 21 WAS 21 7/8 DIM 21 7/8 ADDED	6-10-65	XI	G.D.L	GA	
Ø	ORIGINAL RELEASE FOR PRODUCTION	6-12-65	Ø	G.D.L		file

MS 4613



MARK TMC PART NO. 1/8 HIGH GOTHIC  
W/LATEST REVISION LETTER

- UNLESS OTHERWISE SPECIFIED:
1. USE MATERIAL THICKNESS FOR MAXIMUM RADIUS ON ALL BENDS
  2. ALL ANGULAR BENDS 90 DEGREES
  3. REMOVE ALL BURRS AND SHARP EDGES

REQ'D.	ITEM	PART NUMBER	DESCRIPTION	SYMBOL
F. BUDETTI LIST OF MATERIAL				
MATERIAL		.064 THK. ALUMINUM 5052-H32	THE TECHNICAL MATERIEL CORP. MAMARONECK, NEW YORK	
FINISH		5404 YEL. IRIDITE	TITLE COVER, CABLE	
UNLESS OTHERWISE SPECIFIED DIMENSIONS ARE IN INCHES AND INCLUDE CHEMICALLY APPLIED OR PLATED FINISHES		DRAWN G.D.L	DATE 6-2-65	FINAL APPR. [Signature]
DECIMALS .X ± .05 .XX ± .01 .XXX ± .005		TOLERANCES	DATE 3-9-66	DATE 4/7/66
FRACTIONS ± 1/64 ANGLES ± 0° 30'		ELECT. DES. [Signature]	DATE 4-7-60	MS 4613
		MECH. DES. [Signature]	DATE	Ø
				REV. LTR.

1	TST (-) - 10K	AX 580
QTY./UNIT	MODEL USED ON	ASS'Y. NO.
SCALE 1:2	CODE A	
THE CONTENTS OF THIS DRAWING ARE THE EXCLUSIVE PROPERTY OF THE TECHNICAL MATERIEL CORP. ITS UNAUTHORIZED USE OR REPRODUCTION IN WHOLE OR IN PART IS STRICTLY FORBIDDEN.		

NOTES