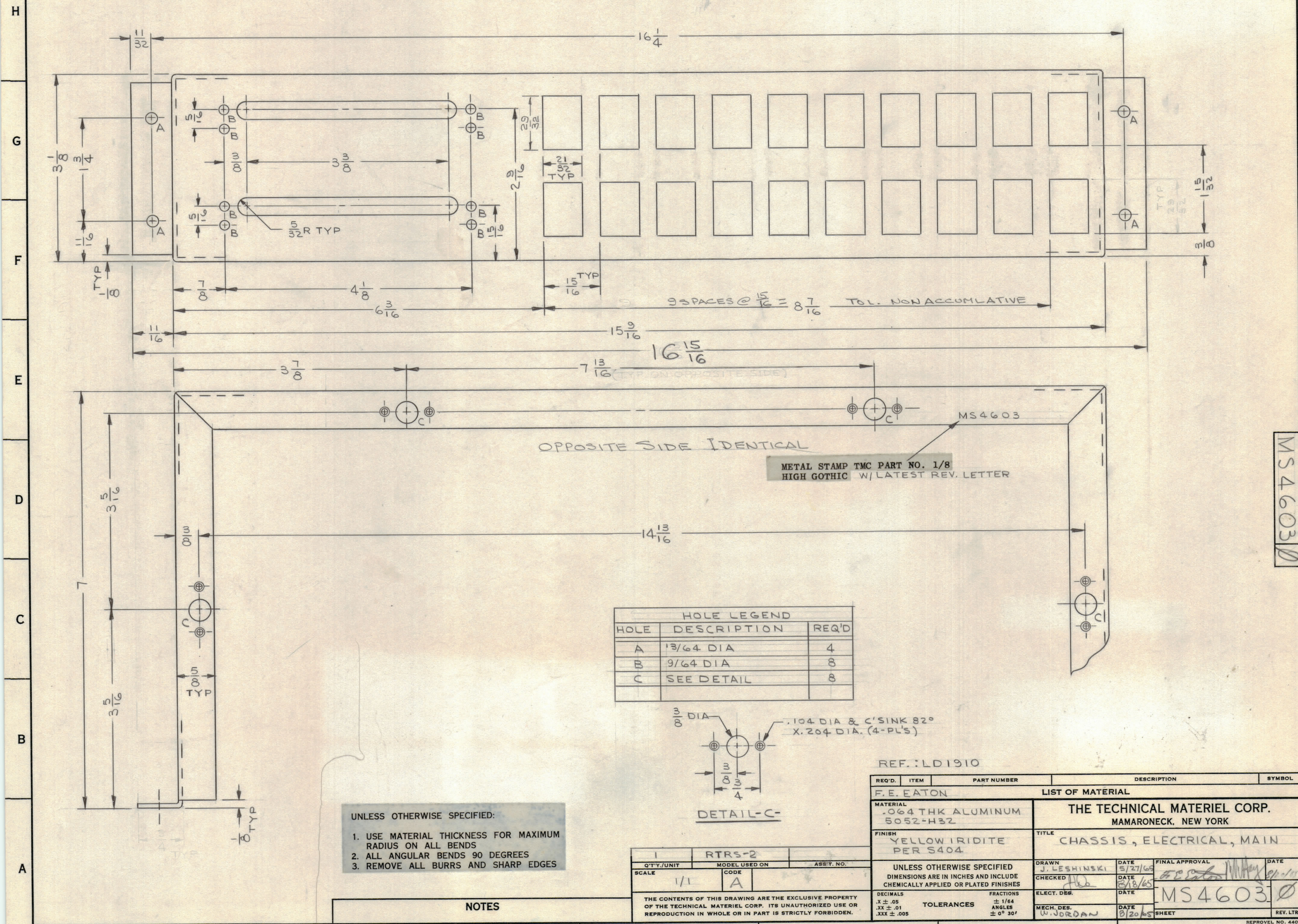
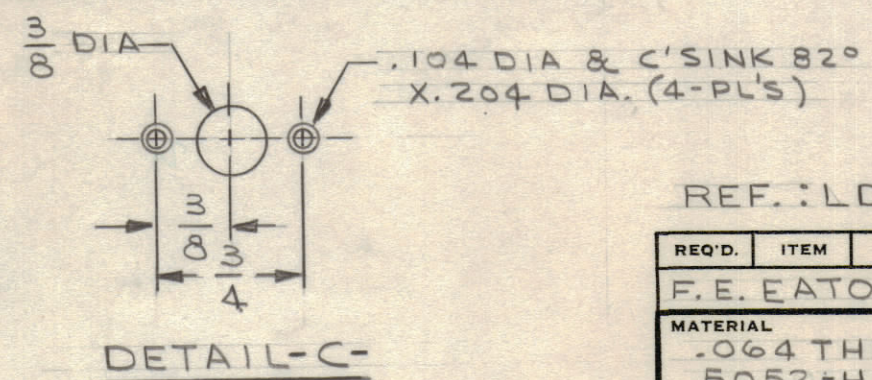


REVISIONS					
ZONE	SYM	DESCRIPTION	DATE	E.M.N. NO.	APPD
XI		B HOLES WERE 11/64 DIA.	7-8-65	—	JC
		ORIGINAL RELEASE	8-20-65		EDL



OPPOSITE SIDE IDENTICAL
 METAL STAMP TMC PART NO. 1/8
 HIGH GOTHIC W/LATEST REV. LETTER

HOLE LEGEND		
HOLE	DESCRIPTION	REQ'D
A	13/64 DIA	4
B	9/64 DIA	8
C	SEE DETAIL	8



- UNLESS OTHERWISE SPECIFIED:
1. USE MATERIAL THICKNESS FOR MAXIMUM RADIUS ON ALL BENDS
 2. ALL ANGULAR BENDS 90 DEGREES
 3. REMOVE ALL BURRS AND SHARP EDGES

REF.: LD1910

REQ'D.	ITEM	PART NUMBER	DESCRIPTION	SYMBOL
F. E. EATON LIST OF MATERIAL				
MATERIAL			THE TECHNICAL MATERIEL CORP.	
.064 THK ALUMINUM			MAMARONECK, NEW YORK	
5052-H32			TITLE	
FINISH			CHASSIS, ELECTRICAL, MAIN	
YELLOW IRIDITE			DRAWN	
PER S404			J. LESHINSKI	
UNLESS OTHERWISE SPECIFIED			DATE	
DIMENSIONS ARE IN INCHES AND INCLUDE			5/27/65	
CHEMICALLY APPLIED OR PLATED FINISHES			CHECKED	
			JLB	
			DATE	
			6/18/65	
DECIMALS			ELECT. DES.	
.X ± .05			DATE	
.XX ± .01			MS4603	
.XXX ± .005			MECH. DES.	
TOLERANCES			W. JORDAN	
FRACTIONS			DATE	
± 1/64			8/20/65	
ANGLES			SHEET	
± 0° 30'			REV. LTR.	

NOTES

THE CONTENTS OF THIS DRAWING ARE THE EXCLUSIVE PROPERTY OF THE TECHNICAL MATERIEL CORP. ITS UNAUTHORIZED USE OR REPRODUCTION IN WHOLE OR IN PART IS STRICTLY FORBIDDEN.

MS4603