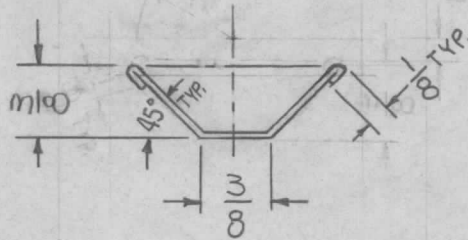
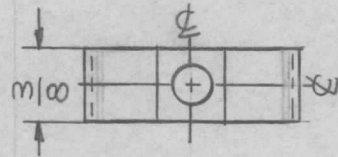


REQ. PER UNIT	USED ON			MS 4505	Ø
	MODEL	ASS'Y. NO.	DATE		
1	RFTA-1	A 4286	4-13-65		

HOLE ~
13/64 DIA.



NOTE:
HEAT TREAT 600° F FOR 3
HOURS THEN AIR COOL.

REQ. ITEM	PART NO.	F. BUDETTI DESCRIPTION	SYMBOL
Ø	ORIGINAL RELEASE FOR PRODUCTION	5/19/66	Ø CV
X2	HEAT TREAT NOTE ADDED	5-24-65	X2 SRG
X1	3/8 HIGH WAS 5/16	4-26-65	X1 SRG
SYM	DESCRIPTION	DATE	CH. NO. DRAFTS CHECKER ENG. APP.
UNLESS OTHERWISE SPECIFIED DIMENSIONS ARE IN INCHES AND INCLUDE CHEMICALLY APPLIED OR PLATED FINISHES		SCALE	1:1
DECIMALS .X ± .05 .XX ± .01 .XXX ± .005	TOLERANCES	FRACTIONS ± 1/64 ANGLES ± 0° 30'	CODE A
	SEE NOTE	SRG	QC/S 203
TYPE & TEMPER	HEAT TREAT. SPEC.	DRAWN	CHECKED
S245 SILVER PLATE		AA 6/14/66	BB
S423 IRIDITE 18-P SILVER KOTE			
FINISH & SPEC. NO.	ELEC. DES. APP.	MECH. DES. APP.	
			MS 4505 Ø

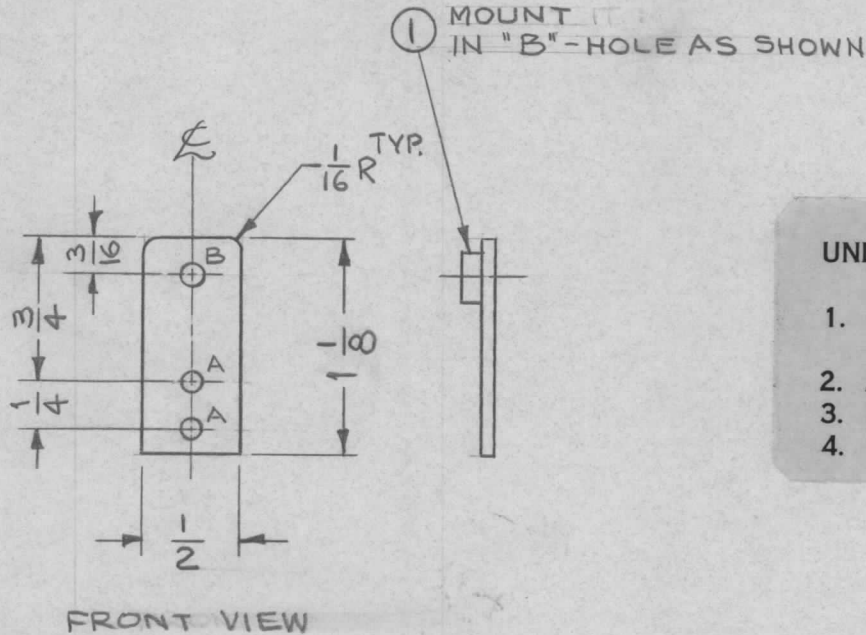
HOLES

REQ

A ~ 1/8 DIA — 2

B ~ .191-.194 DIA — 1

REQ. PER UNIT	USED ON			MS4507 Ø
	MODEL	ASS'Y. NO.	DATE	
2	TSTE10K		4.7.1965	



UNLESS OTHERWISE SPECIFIED:

1. USE MATERIAL THICKNESS FOR MAXIMUM RADIUS ON ALL BENDS
2. ALL ANGULAR BENDS 90 DEGREES
3. REMOVE ALL BURRS AND SHARP EDGES
4. MOUNT INSERTS AFTER FINISHING

FINISH NOTES:

1. S404 - IRIDITE 14-2 AL-COAT.
2. S114 - ZINC CHROMATE PRIMER) FRONT AND
3. S115 - SMOOTH GRAY ENAMEL) EDGES ONLY

Ø	ORIGINAL RELEASE FOR PRODUCTION	5/16/67	Ø	CV		
X ₁	FINISH WAS S404	4-22-65	X ₁	SRG	CA	
SYM	DESCRIPTION	DATE	CH. NO.	DRAFTS	CHECKER	ENG. APP.
UNLESS OTHERWISE SPECIFIED DIMENSIONS ARE IN INCHES AND INCLUDE CHEMICALLY APPLIED OR PLATED FINISHES		SCALE 1:1				
DECIMALS .X ± .05 .XX ± .01 .XXX ± .005	TOLERANCES	FRACTIONS ± 1/64 ANGLES ± 0° 30'	CODE A			

1	1	NT129-632-4	NUT, PLAIN, SPLINE	B
REQ.	ITEM	PART NO.	F. BUDETTI DESCRIPTION	SYMBOL
		.064 THICK	THE TECHNICAL MATERIEL CORP.	
		STOCK SIZE	MAMARONECK, NEW YORK	
		ALUMINUM	PLATE, RETAINER, DOOR	
		MATERIAL		
		5052 H32		
		TYPE & TEMPER	HEAT TREAT. SPEC.	
		DRAWN	CHECKED	FINAL APPROVAL
		SEE NOTES	a.q.	J.S.
		FINISH & SPEC. NO.	ELEC. DES. APP.	MECH. DES. APP.
				MS4507 Ø

UNLESS OTHERWISE SPECIFIED:

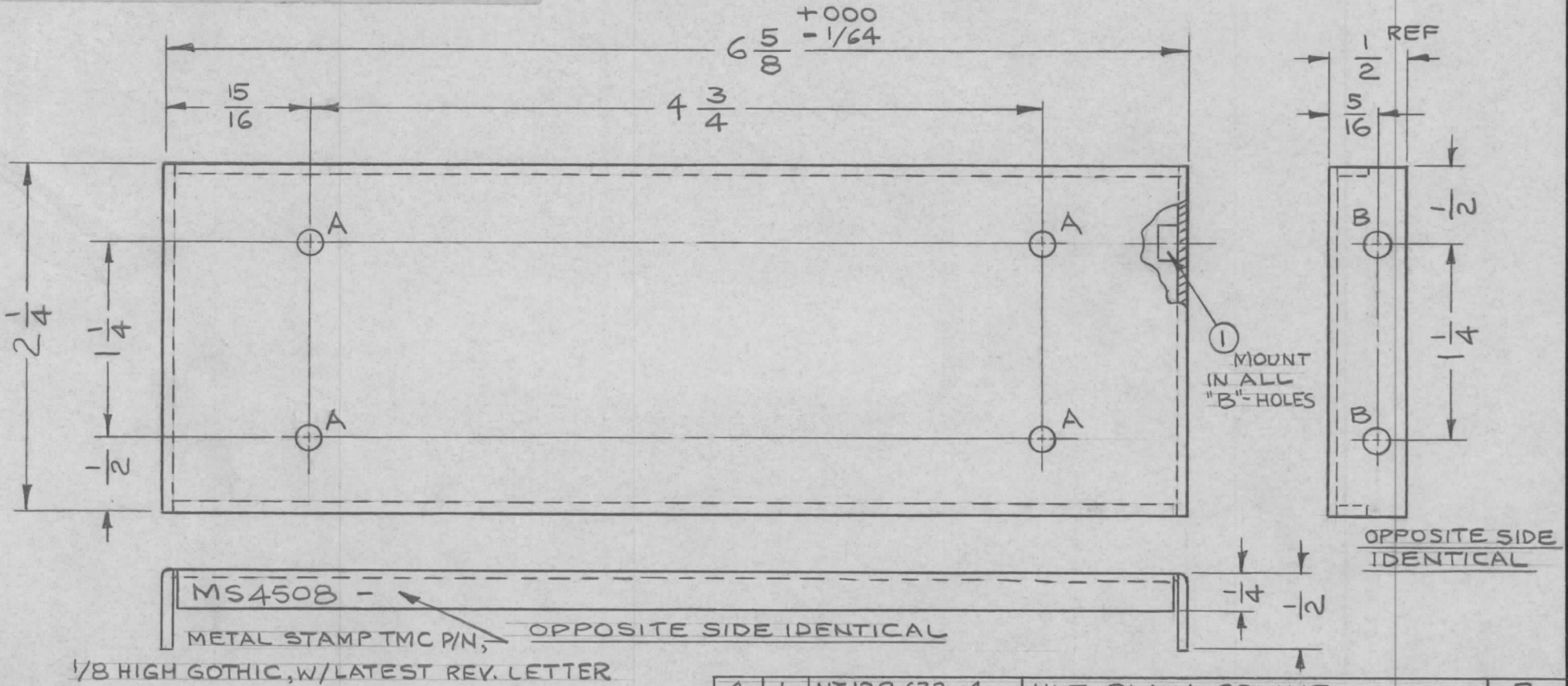
1. USE MATERIAL THICKNESS FOR MAXIMUM RADIUS ON ALL BENDS
2. ALL ANGULAR BENDS 90 DEGREES
3. REMOVE ALL BURRS AND SHARP EDGES
4. MOUNT INSERTS AFTER FINISHING

REQ. PER UNIT	USED ON			MS4508	Ø
	MODEL	ASS'Y. NO.	DATE		
1	TSTE10K		4.7.65		

HOLES

REQ

A ~ 1/64 DIA	4
B ~ .191-.194 DIA	4

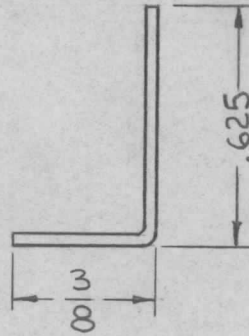
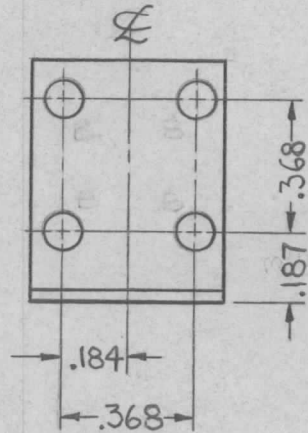
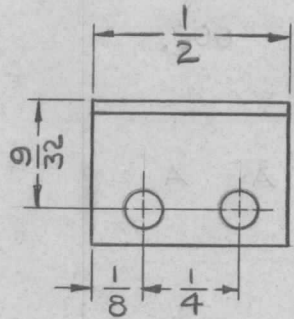


MS4508 - METAL STAMP TMC P/N, OPPOSITE SIDE IDENTICAL

1/8 HIGH GOTHIC, W/LATEST REV. LETTER

4	1	NT129-632-4	NUT, PLAIN, SPLINE		B
REQ.	ITEM	PART NO.	F. BUDETTI DESCRIPTION		SYMBOL
		.064 THICK	THE TECHNICAL MATERIEL CORP.		
		STOCK SIZE	MAMARONECK, NEW YORK		
Ø	ORIGINAL RELEASE FOR PRODUCTION	5/16/67	Ø	CV	fw
SYM	DESCRIPTION	DATE	CH. NO.	DRAFTS	CHECKER
UNLESS OTHERWISE SPECIFIED DIMENSIONS ARE IN INCHES AND INCLUDE CHEMICALLY APPLIED OR PLATED FINISHES		SCALE	1:1		
DECIMALS	TOLERANCES	FRACTIONS	CODE		
.X ± .05		± 1/64	A		
.XX ± .01		ANGLES			
.XXX ± .005		± 0° 30'			
5052 H32		DRAWN		CHECKED	FINAL APPROVAL
5404 YEL. IRIDITE		DRAWN		CHECKED	FINAL APPROVAL
FINISH & SPEC. NO.		ELEC. DES. APP.		MECH. DES. APP.	
		MS4508		Ø	

REQ. PER UNIT	USED ON		MS4509	Ø
	MODEL	ASS'Y. NO.		
	TSTE10K		4.1.65	



HOLES

REQ

3/32 DIA 32 DIA — 6
 B — .083 DIA — 4

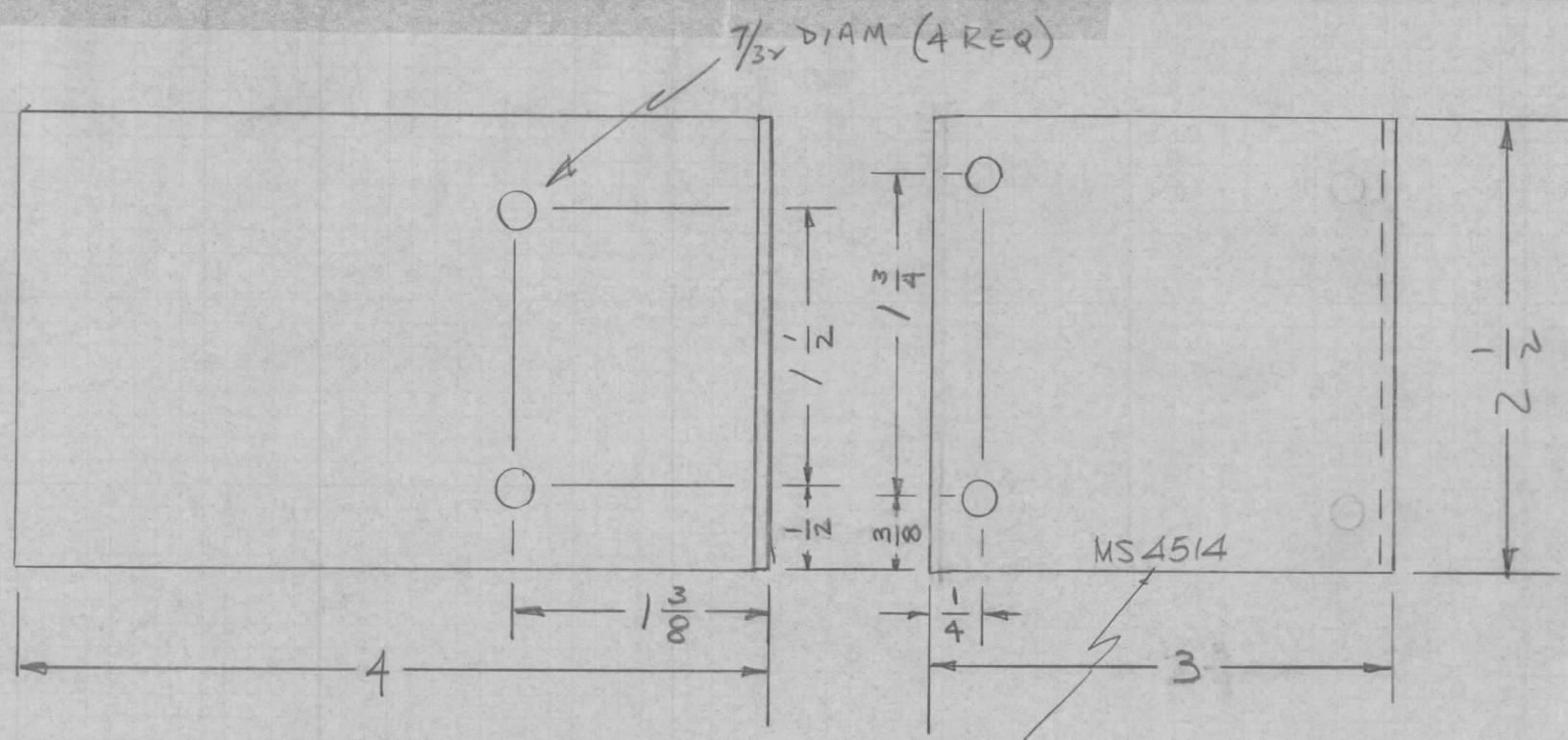
UNLESS OTHERWISE SPECIFIED:

1. USE MATERIAL THICKNESS FOR MAXIMUM RADIUS ON ALL BENDS
2. ALL ANGULAR BENDS 90 DEGREES
3. REMOVE ALL BURRS AND SHARP EDGES

REQ.	ITEM	PART NO.	F. BUDETTI	DESCRIPTION	SYMBOL					
		.040 THICK		THE TECHNICAL MATERIEL CORP.						
		STOCK SIZE		MAMARONECK, NEW YORK						
Ø		ALUMINUM		BRACKET, SIDE						
SYM	DESCRIPTION	DATE	CH. NO.	DRAFTS	CHECKER	ENG. APP.				
	UNLESS OTHERWISE SPECIFIED DIMENSIONS ARE IN INCHES AND INCLUDE CHEMICALLY APPLIED OR PLATED FINISHES	SCALE	2:1							
	DECIMALS .X ± .05 .XX ± .01 .XXX ± .005	TOLERANCES	FRACTIONS ± 1/64 ANGLES ± 0° 30'	CODE	A					
	5052 H32	HEAT TREAT. SPEC.		DRAWN	bob	CHECKED	PS	FINAL APPROVAL	MS4509	Ø
	S404 YEL. IRIDITE	FINISH & SPEC. NO.		ELEC. DES. APP.		MECH. DES. APP.				

REQ. PER UNIT	USED ON		
	MODEL	ASS'Y. NO.	DATE
21	DDR-506	A2060	4-6-65

MS4514 \emptyset



METAL STAMP TMC PT. NO. 1/8 HIGH GOTHIC W/LATEST REVISION LETTER.

SYM	DESCRIPTION	DATE	CH. NO.	DRAFTS	CHECKER	ENG. APP.	REQ. ITEM	PART NO.	STURMER	DESCRIPTION	SYMBOL
							.081			THE TECHNICAL MATERIEL CORP.	
							STOCK SIZE			MAMARONECK, NEW YORK	
\emptyset	ORIGINAL RELEASE FOR PRODUCTION						ALUM			BRACKET & RETRACTOR MTS.	
							5052-H32		M. STURMER	JCS	AM/Kan 4/15/65
							TYPE & TEMPER	HEAT TREAT. SPEC.	DRAWN	CHECKED	FINAL APPROVAL
							S404 YEL IRIDITE			4-14-65	MS4514 \emptyset
							FINISH & SPEC. NO.		ELEC. DES. APP.	MECH. DES. APP.	

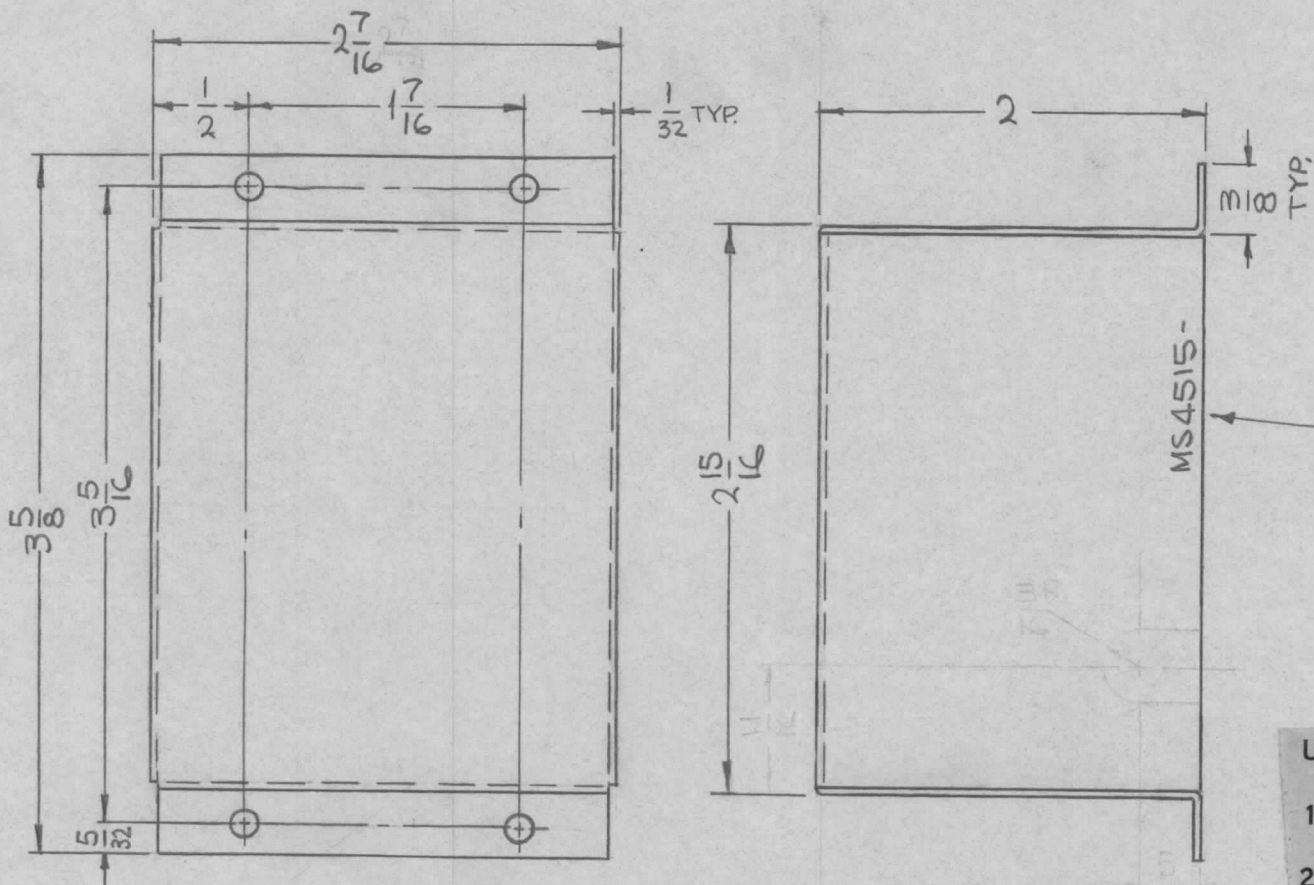
UNLESS OTHERWISE SPECIFIED DIMENSIONS ARE IN INCHES AND INCLUDE CHEMICALLY APPLIED OR PLATED FINISHES

DECIMALS
.X \pm .05
.XX \pm .01
.XXX \pm .005

FRACTIONS
 \pm 1/64
ANGLES
 \pm 0° 30'

TOLERANCES

REQ. PER UNIT	USED ON			MS4515	Ø
	MODEL	ASS'Y. NO.	DATE		
2	TSTE-10K		4-19-65		

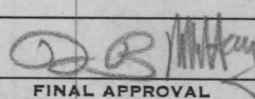


HOLES:
9/64 DIA. (4REQ.)

METAL STAMP TMC PART NO. 1/8 HIGH GOTHIC W/LATEST REV. LETTER.

- UNLESS OTHERWISE SPECIFIED:
1. USE MATERIAL THICKNESS FOR MAXIMUM RADIUS ON ALL BENDS
 2. ALL ANGULAR BENDS 90 DEGREES
 3. REMOVE ALL BURRS AND SHARP EDGES

REF.: LD1938
LD1939

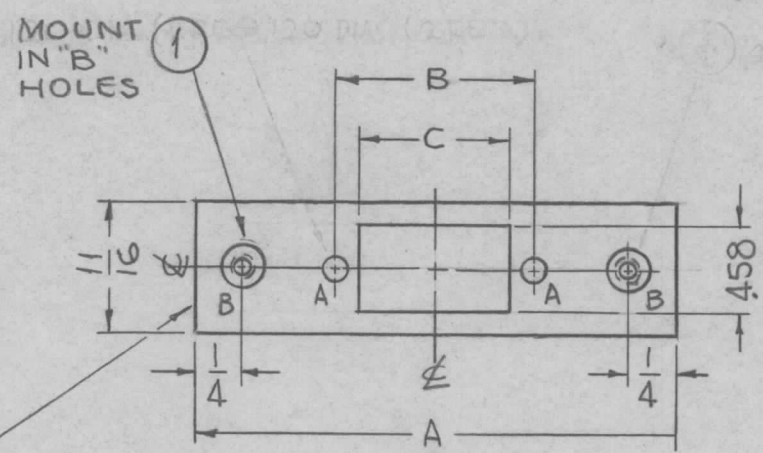
							REQ. ITEM	PART NO.	F. BUDETTI	DESCRIPTION	SYMBOL	
Ø	ORIG. RELEASE FOR PROD	5-5-67	Ø	R.G.			.064 THICK	THE TECHNICAL MATERIEL CORP. MAMARONECK, NEW YORK				
X2	MAT WAS. Ø31 THICK	5/10/65	X2	DA	RC	STOCK SIZE		SHIELD, RF				
X1	ON SIDE VIEW SLOT 3/16 x 5/16 DELETED	5-4-65	X1	G.D.L.			ALUMINUM					
SYM	DESCRIPTION	DATE	CH. NO.	DRAFTS	CHECKER	ENG. APP.	MATERIAL					
UNLESS OTHERWISE SPECIFIED DIMENSIONS ARE IN INCHES AND INCLUDE CHEMICALLY APPLIED OR PLATED FINISHES		SCALE 1:1					5052-H32	SRG	 FINAL APPROVAL			
DECIMALS .X ± .05 .XX ± .01 .XXX ± .005		TOLERANCES		FRACTIONS ± 1/64 ANGLES ± 0° 30'		CODE A	TYPE & TEMPER S404 YEL. IRIDITE	HEAT TREAT. SPEC.	DRAWN da	CHECKED MD	MS4515 Ø	
							FINISH & SPEC. NO.	ELEC. DES. APP.	MECH. DES. APP.			

TMC P/N	A	B	C	REQ
MS 4518 -1	2-3/4	.984	.787	
MS 4518 -2	3-1/8	1.312	1.115	
MS 4518 -3	3-5/8	1.852	1.654	
MS 4518 -4	4-1/4	2.500	2.302	

REQ. PER UNIT	USED ON		
	MODEL	ASS'Y. NO.	DATE
	TSTE-10K		4-15-65

MS4518 \emptyset

HOLES:
 A ~ .120 DIA. (2 REQ.)
 B ~ .161-.164 DIA. (2 REQ.)



MARK STAMP
 TMC PART NO.
 (MS4518-) 1/8
 HIGH GOTHIC
 W/LATEST REV.
 LETTER.

SYM	DESCRIPTION	DATE	CH. NO.	DRAFTS	CHECKER	ENG. APP.	REQ. ITEM	PART NO.	BUDETTI DESCRIPTION	SYMBOL			
							2	1	NT129-440-3	NUT, PLAIN, SPLINE	B		
									.064 THICK	THE TECHNICAL MATERIEL CORP. MAMARONECK, NEW YORK			
									STOCK SIZE				
									ALUMINUM	PLATE, CONNECTOR MTG.			
									MATERIAL				
									5052-H32	SRG	6/27/66		
									TYPE & TEMPER	HEAT TREAT. SPEC.	DRAWN	CHECKED	FINAL APPROVAL
									S404 YEL. IRIDITE	00-6-27-66			
									FINISH & SPEC. NO.	ELEC. DES. APP.	MECH. DES. APP.		
												MS4518	\emptyset

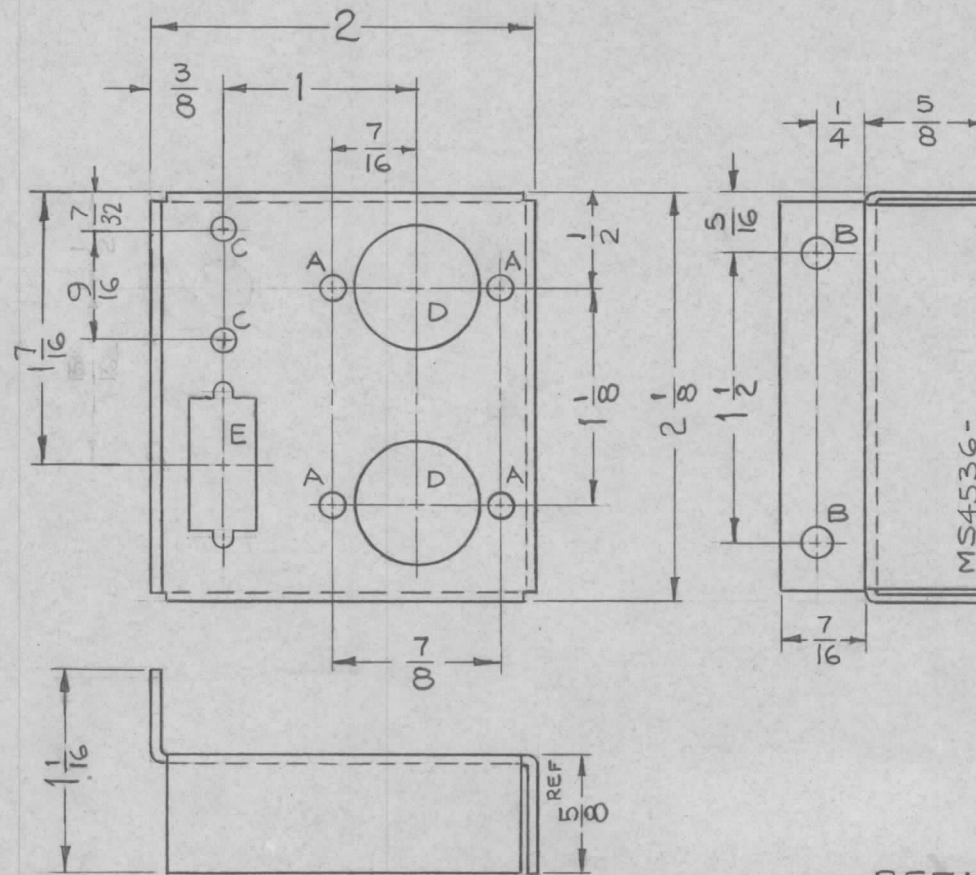
UNLESS OTHERWISE SPECIFIED:

1. USE MATERIAL THICKNESS FOR MAXIMUM RADIUS ON ALL BENDS
2. ALL ANGULAR BENDS 90 DEGREES
3. REMOVE ALL BURRS AND SHARP EDGES

REQ. PER UNIT	USED ON		
	MODEL	ASSY. NO.	DATE
1	RFTA-1		4.23.65

MS4536 ~~Ø~~

HOLE	DESCRIPTION	REQ
A	1/8 DIA	4
B	5/32 DIA	2
C	7/64 DIA	2
D	5/8 DIA	2
E	SEE DETAIL	1



MARK TMC PART NO. 1/8 HIGH GOTHIC WITH LATEST REVISION LETTER.

REF: LD 1870

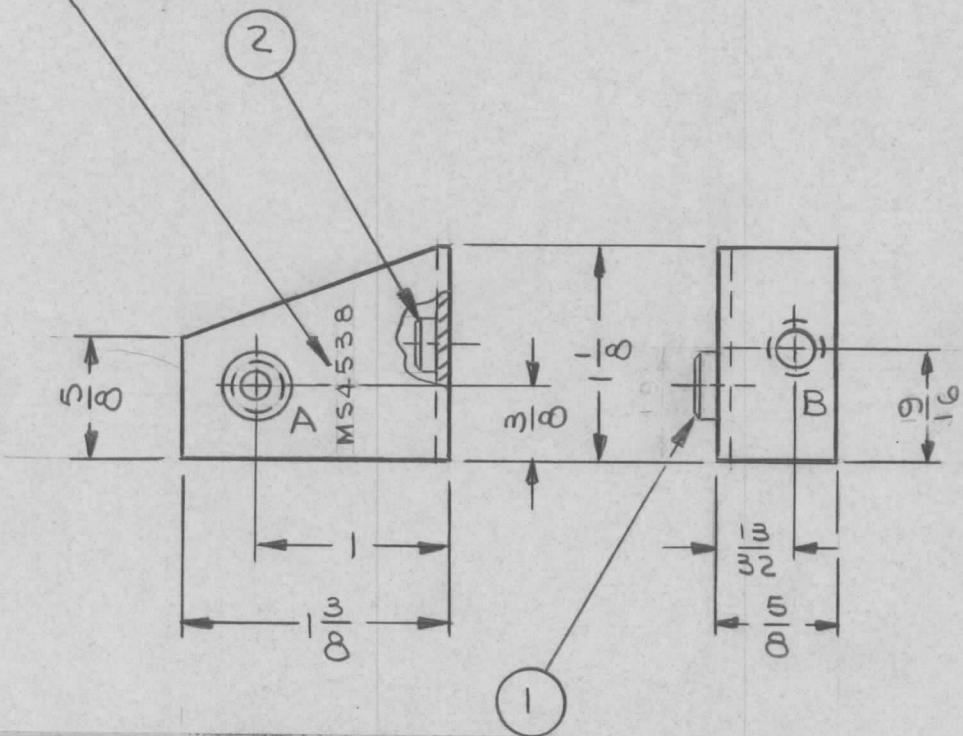
REQ.	ITEM	PART NO.	F. BUDETTI	DESCRIPTION	SYMBOL
		.064 THICK		THE TECHNICAL MATERIEL CORP. MAMARONECK, NEW YORK	
		STOCK SIZE			
		ALUMINUM		CHASSIS, SENSING	
		MATERIAL			
		5052-H32			
		TYPE & TEMPER	HEAT TREAT. SPEC.	DRAWN	CHECKED
		S404 YEL. IRIDITE			
		FINISH & SPEC. NO.	ELEC. DES. APP.	MECH. DES. APP.	

UNLESS OTHERWISE SPECIFIED DIMENSIONS ARE IN INCHES AND INCLUDE CHEMICALLY APPLIED OR PLATED FINISHES	SCALE 1:1				
DECIMALS .X ± .05 .XX ± .01 .XXX ± .005	FRACTIONS ± 1/64 ANGLES ± 0° 30'	TOLERANCES	CODE A		

METAL STAMP TMC PART NO. 3/32
HIGH GOTHIC W/LATEST REV. LETTER

REQ. PER UNIT	USED ON		
	MODEL	ASS'Y. NO.	DATE
1	LRCB-1		4-23-65
1	LRCD-1		4-23-65

MS4538 Ø



HOLE LEGEND

HOLE	DESCRIPTION	REQ'D
A	.277-.280 DIA	1
B	.221-.224 DIA	1

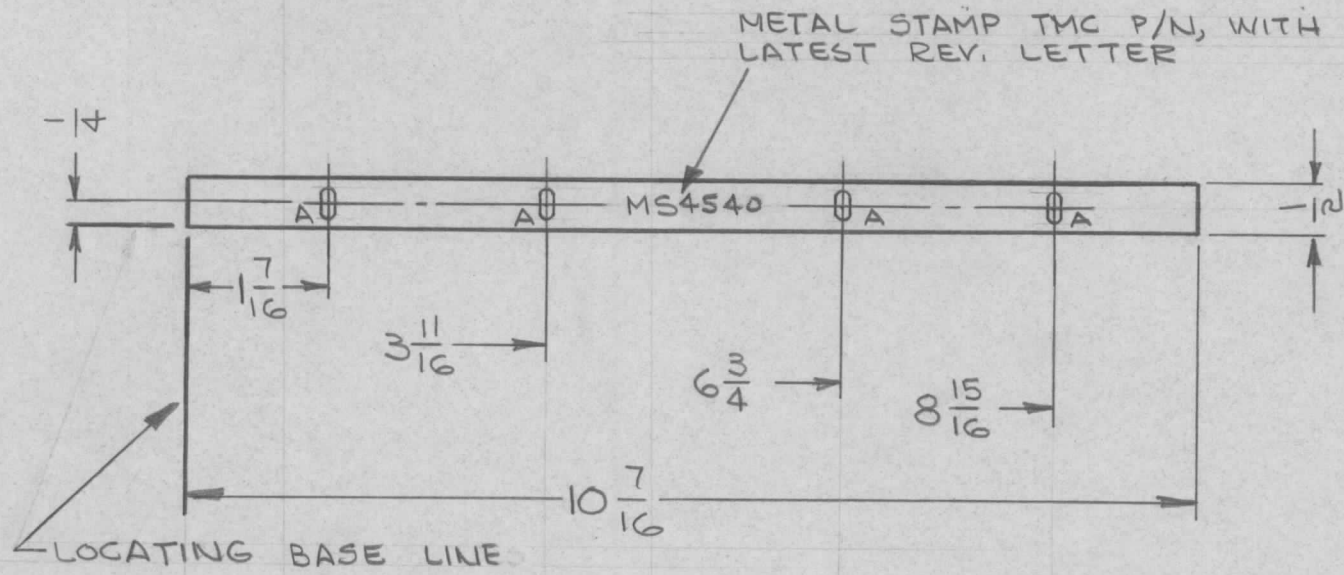
UNLESS OTHERWISE SPECIFIED:

1. USE MATERIAL THICKNESS FOR MAXIMUM RADIUS ON ALL BENDS
2. ALL ANGULAR BENDS 90 DEGREES
3. REMOVE ALL BURRS AND SHARP EDGES
4. MOUNT INSERTS AFTER FINISHING

1	2	NT129-832-4	NUT, ROUND, SWAGE TYPE	B
1	1	NT129-1224-4	NUT, ROUND, SWAGE TYPE	A
REQ. ITEM	PART NO.		FE. EATON DESCRIPTION	SYMBOL
	.064 THK		THE TECHNICAL MATERIEL CORP.	
	STOCK SIZE		MAMARONECK, NEW YORK	
	ALUMINUM		MTG BRACKET, RESISTOR	
	MATERIAL			
	5052-H32		J. LESHINSKI	<i>JCL</i>
	TYPE & TEMPER	HEAT TREAT. SPEC.	DRAWN	CHECKED
	YELLOW IRIDITE PER S404			
	FINISH & SPEC. NO.		ELEC. DES. APP.	MECH. DES. APP.
				MS4538 Ø

Ø	ORIG. REL. FOR PROD.	4/30/65	JL			
SYM	DESCRIPTION	DATE	CH. NO.	DRAFTS	CHECKER	ENG. APP.
	UNLESS OTHERWISE SPECIFIED DIMENSIONS ARE IN INCHES AND INCLUDE CHEMICALLY APPLIED OR PLATED FINISHES	SCALE	1/1			
DECIMALS	TOLERANCES	FRACTIONS	CODE			
.X ± .05		± 1/64				
.XX ± .01		ANGLES				
.XXX ± .005		± 0° 30'				

REQ. PER UNIT	USED ON		MS4540	Ø
	MODEL	ASS'Y. NO.		
2	RAK-21C		4-23-65	



NOTE:

REMOVE ALL BURRS & SHARP EDGES.

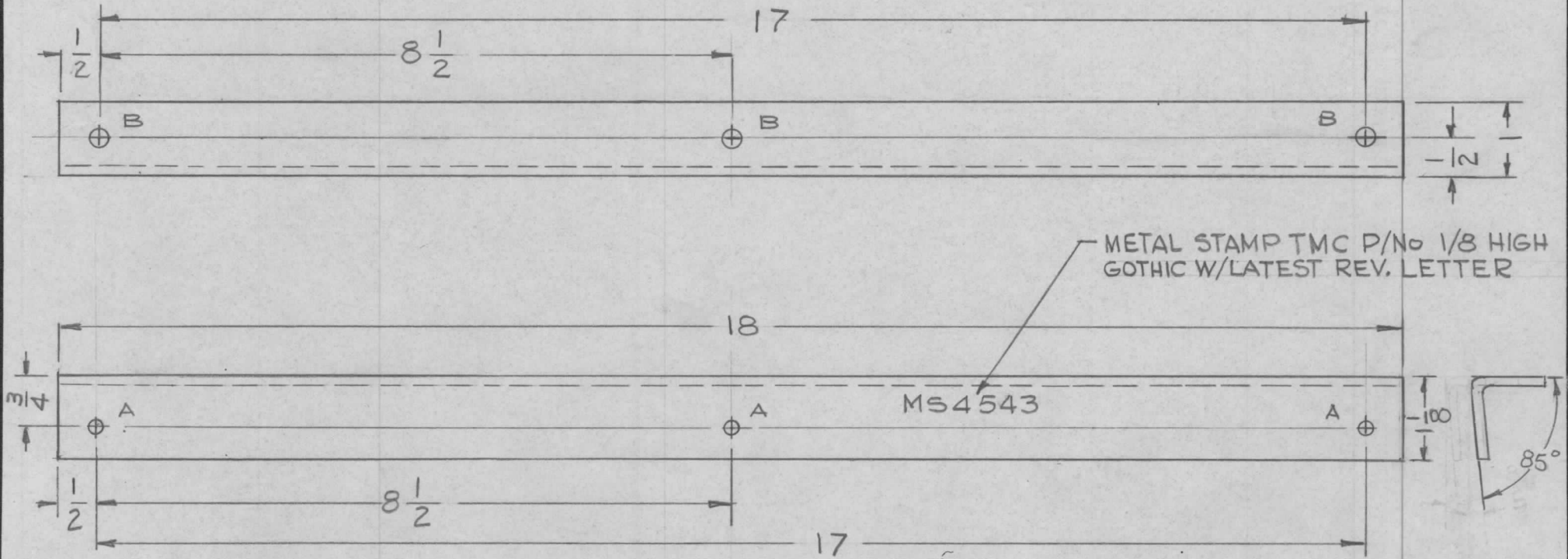
A ≈ 1/4 x 5/16 SLOTS ~ 4 REQ.

REQ.	ITEM	PART NO.	FEATON			DESCRIPTION	SYMBOL
		1/8	THE TECHNICAL MATERIEL CORP.				
		STOCK SIZE	MAMARONECK, NEW YORK				
Ø	ORIGINAL RELEASE FOR PRODUCTION	ALUMINUM	SHIM, UNIT MOUNTING				
SYM	DESCRIPTION	DATE	CH. NO.	DRAFTS	CHECKER	ENG. APP.	
UNLESS OTHERWISE SPECIFIED DIMENSIONS ARE IN INCHES AND INCLUDE CHEMICALLY APPLIED OR PLATED FINISHES		SCALE	1:2				
DECIMALS	TOLERANCES	FRACTIONS	CODE				
.X ± .05		± 1/64	A				
.XX ± .01		ANGLES					
.XXX ± .005		± 0° 30'					
		5052-H32					
		TYPE & TEMPER	HEAT TREAT. SPEC.	DRAWN	CHECKED	FINAL APPROVAL	
		S404-YEL. IRIDITE					
		FINISH & SPEC. NO.	ELEC. DES. APP.	MECH. DES. APP.			
					MS4540	Ø	

HOLE	DESCRIPTION	REQ.
A	9/32 DIA	3
B	15/64 DIA	3

REQ. PER UNIT	USED ON		
	MODEL	ASS'Y. NO.	DATE
1	TSTE-10K		5-4-65

MS4543 \emptyset



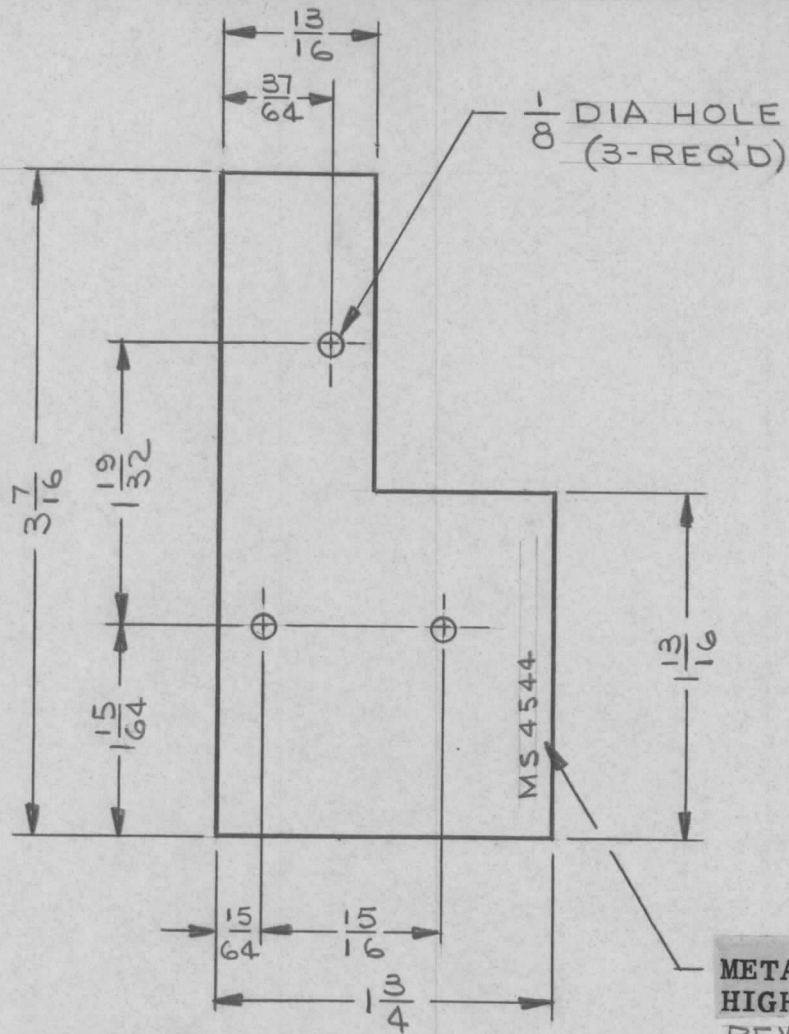
REQ.	ITEM	PART NO.	F. BUDETTI	DESCRIPTION	SYMBOL
		1/8 THK STOCK SIZE		THE TECHNICAL MATERIEL CORP. MAMARONECK, NEW YORK	
		ALUMINUM		BRACKET, MTG, FRONT	
		MATERIAL			
		5052-H32	G.D.L.		
		TYPE & TEMPER	HEAT TREAT. SPEC.	DRAWN	CHECKED
		S404 YEL. IRIDITE			
		FINISH & SPEC. NO.	ELEC. DES. APP.	MECH. DES. APP.	
					MS4543 \emptyset

SYMBOL	DESCRIPTION	DATE	CH. NO.	DRAFTS	CHECKER	ENG. APP.
\emptyset	ORIGINAL RELEASE FOR PRODUCTION	5/16/67	\emptyset	CV		<i>[Signature]</i>

UNLESS OTHERWISE SPECIFIED DIMENSIONS ARE IN INCHES AND INCLUDE CHEMICALLY APPLIED OR PLATED FINISHES		SCALE
		1:2

DECIMALS	TOLERANCES	FRACTIONS	CODE
.X \pm .05		\pm 1/64	A
.XX \pm .01		ANGLES	
.XXX \pm .005		\pm 0° 30'	

REQ. PER UNIT	USED ON			MS4544 Ø
	MODEL	ASS'Y. NO.	DATE	
1	LRCD-1		4-27-65	



METAL STAMP TMC PART NO. 1/8
HIGH GOTHIC W/LATEST
REV. LETTER

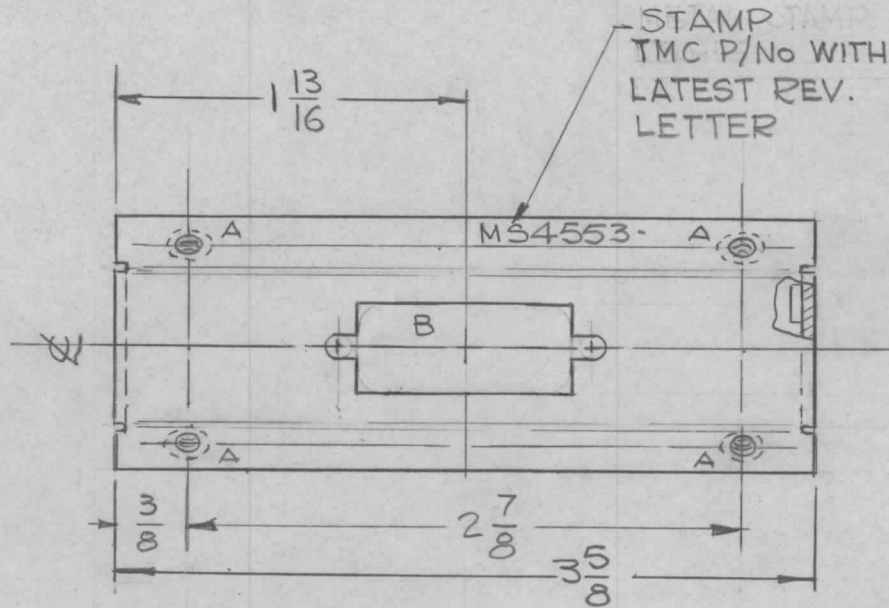
REQ. ITEM	PART NO.	F. E. EATON	DESCRIPTION.	SYMBOL
	.062 THK STOCK SIZE	THE TECHNICAL MATERIEL CORP. MAMARONECK, NEW YORK		
	ALUMINUM	COVER, CUTOUT-RELAY		
Ø	ORIG. REL. FOR PROD.	4/30/65	J.L.	
SYM	DESCRIPTION	DATE	CH. NO.	DRAFTS
	UNLESS OTHERWISE SPECIFIED DIMENSIONS ARE IN INCHES AND INCLUDE CHEMICALLY APPLIED OR PLATED FINISHES	SCALE	NONE	
	DECIMALS .X ± .05 .XX ± .01 .XXX ± .005	FRACTIONS ± 1/64 ANGLES ± 0° 30'	CODE	
	TOLERANCES			
	5052-H32	J. LESHINSKI	CHK	Final Approval 4/30/65
	YELLOW IRIDITE PER S404	DRAWN	CHECKED	FINAL APPROVAL
	FINISH & SPEC. NO.	ELEC. DES. APP.	MECH. DES. APP.	MS4544 Ø

← HOLES ←

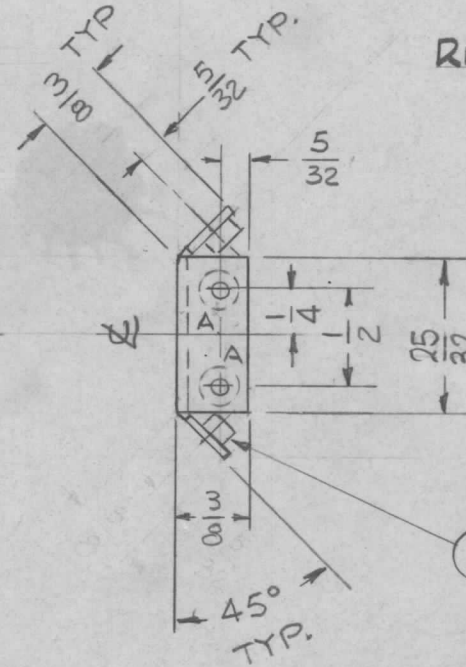
A - .161 - .164 DIA 8 REQ.

B - SEE DETAIL 1 REQ.

REQ. PER UNIT	USED ON		MS4553 \emptyset
	MODEL	ASS'Y. NO.	
2	TSTE-10K		4-30-65

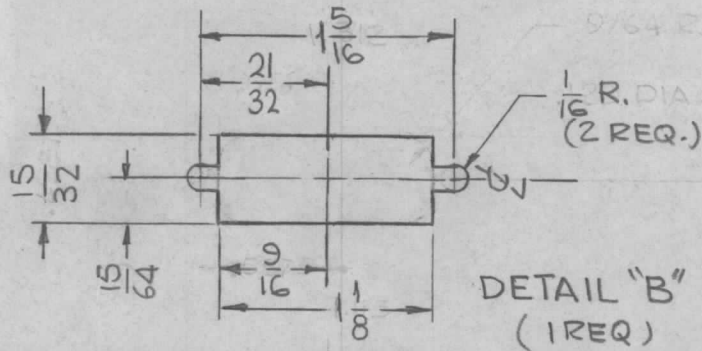


REF. DWG.: LD1925
LD1926



OPPOSITE SIDE SAME

① MOUNT IN ALL "A" HOLES



DETAIL "B"
(1 REQ)

UNLESS OTHERWISE SPECIFIED:

1. USE MATERIAL THICKNESS FOR MAXIMUM RADIUS ON ALL BENDS
2. ALL ANGULAR BENDS 90 DEGREES
3. REMOVE ALL BURRS AND SHARP EDGES
4. MOUNT INSERTS AFTER FINISHING

8	1	NT129-440-4	NUT, PLAIN SPLINE	A
REQ. ITEM	PART NO.		F. BUDETTI DESCRIPTION	SYMBOL
	.050 THK		THE TECHNICAL MATERIEL CORP. MAMARONECK, NEW YORK	BRACKET, MTG. CONNECTOR
	STOCK SIZE			
	ALUMINUM			
MATERIAL		5052-H32	G.D.L.	
TYPE & TEMPER		HEAT TREAT. SPEC.	DRAWN	CHECKED
S404 YEL. IRIDITE				
FINISH & SPEC. NO.		ELEC. DES. APP.	MECH. DES. APP.	MS4553 \emptyset

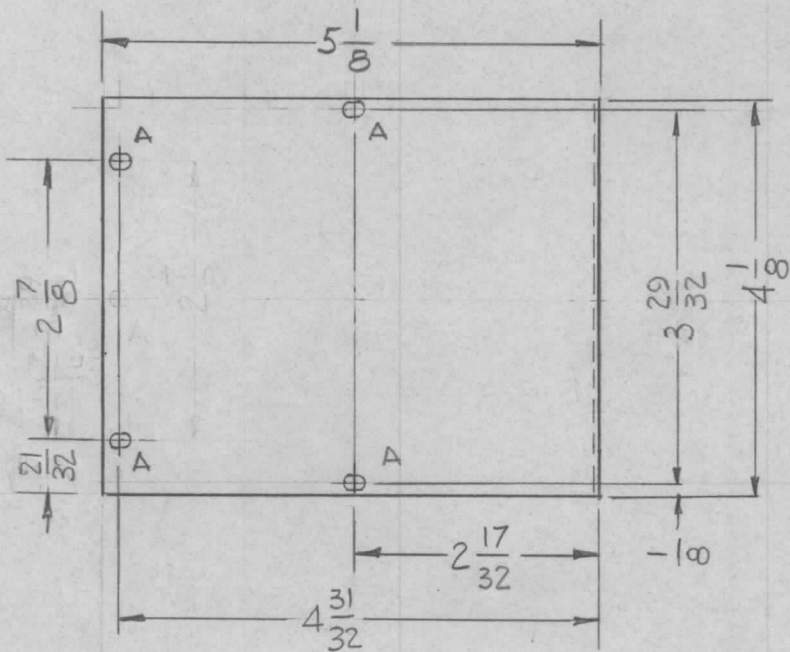
\emptyset	ORIGINAL RELEASE	2/15/66				
X1	CUTOUT DIMS WERE DECIMALS 25/32 WAS 13/16	5-17-65	X1	SRG		
SYM	DESCRIPTION	DATE	CH. NO.	DRAFTS	CHECKER	ENG. APP.
UNLESS OTHERWISE SPECIFIED DIMENSIONS ARE IN INCHES AND INCLUDE CHEMICALLY APPLIED OR PLATED FINISHES		SCALE 1:1				
DECIMALS .X \pm .05 .XX \pm .01 .XXX \pm .005	TOLERANCES	FRACTIONS \pm 1/64 ANGLES \pm 0° 30'	CODE A			

HOLES-

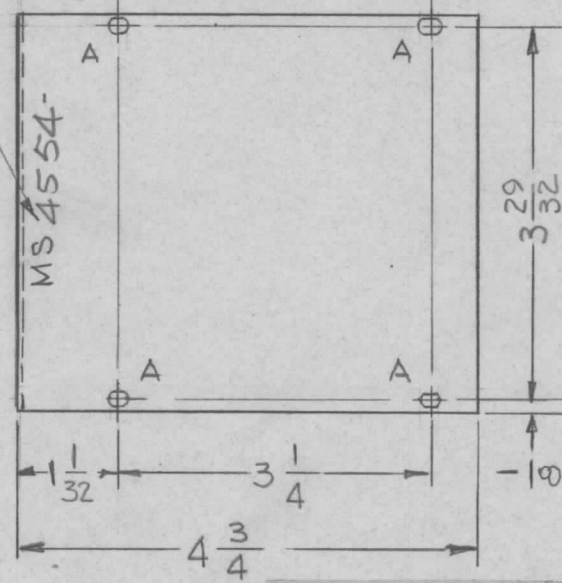
A - 1/8 x 3/16 SLOT 8 REQ.

REQ. PER UNIT	USED ON		
	MODEL	ASS'Y. NO.	DATE
1	TSTE-10K		4-3-65

MS4554 \emptyset



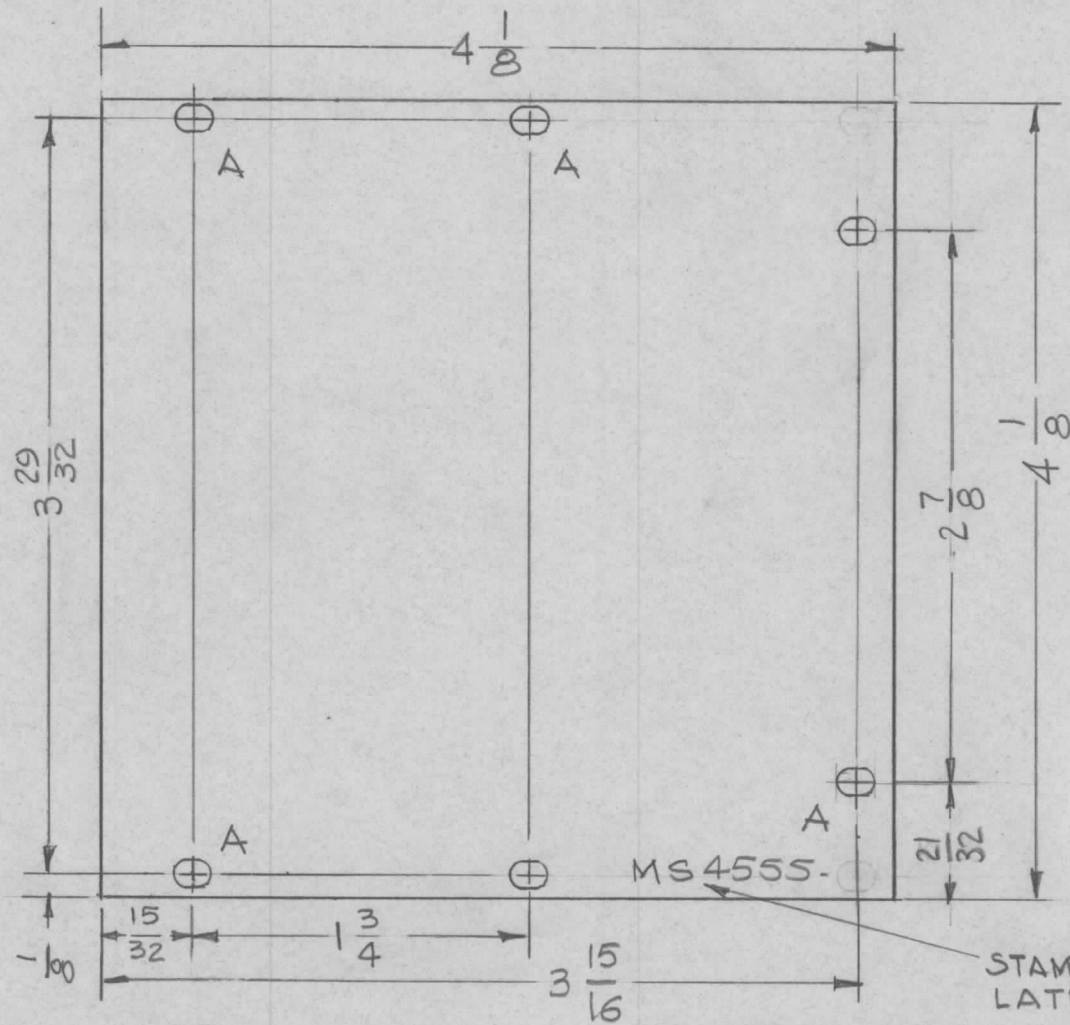
STAMP TMC P/No 1/8 HIGH WITH LATEST REV. LETTER



- UNLESS OTHERWISE SPECIFIED:
1. USE MATERIAL THICKNESS FOR MAXIMUM RADIUS ON ALL BENDS
 2. ALL ANGULAR BENDS 90 DEGREES
 3. REMOVE ALL BURRS AND SHARP EDGES

						REQ. ITEM	PART NO.	F. BUDETTI	DESCRIPTION	SYMBOL	
							.031 THK		THE TECHNICAL MATERIEL CORP.		
							STOCK SIZE		MAMARONECK, NEW YORK		
\emptyset	ORIGINAL RELEASE	2/15/66					ALUMINUM		COVER, GEAR BOX		
SYM	DESCRIPTION	DATE	CH. NO.	DRAFTS	CHECKER	ENG. APP.	MATERIAL				
UNLESS OTHERWISE SPECIFIED DIMENSIONS ARE IN INCHES AND INCLUDE CHEMICALLY APPLIED OR PLATED FINISHES		SCALE		1:2			5052-H32	G.D.L.			
DECIMALS .X \pm .05 .XX \pm .01 .XXX \pm .005	TOLERANCES	FRACTIONS \pm 1/64 ANGLES \pm 0° 30'	CODE				TYPE & TEMPER	HEAT TREAT. SPEC.	DRAWN	CHECKED	FINAL APPROVAL
			A				S404 YEL. IRIDITE				MS4554 \emptyset
							FINISH & SPEC. NO.	ELEC. DES. APP.	MECH. DES. APP.		

REQ. PER UNIT	USED ON		MS4555 \emptyset
	MODEL	DATE	
1	TSTE-10K	4-30-65	



HOLES
A - 1/8 x 3/16 SLOT (6 REQ.)

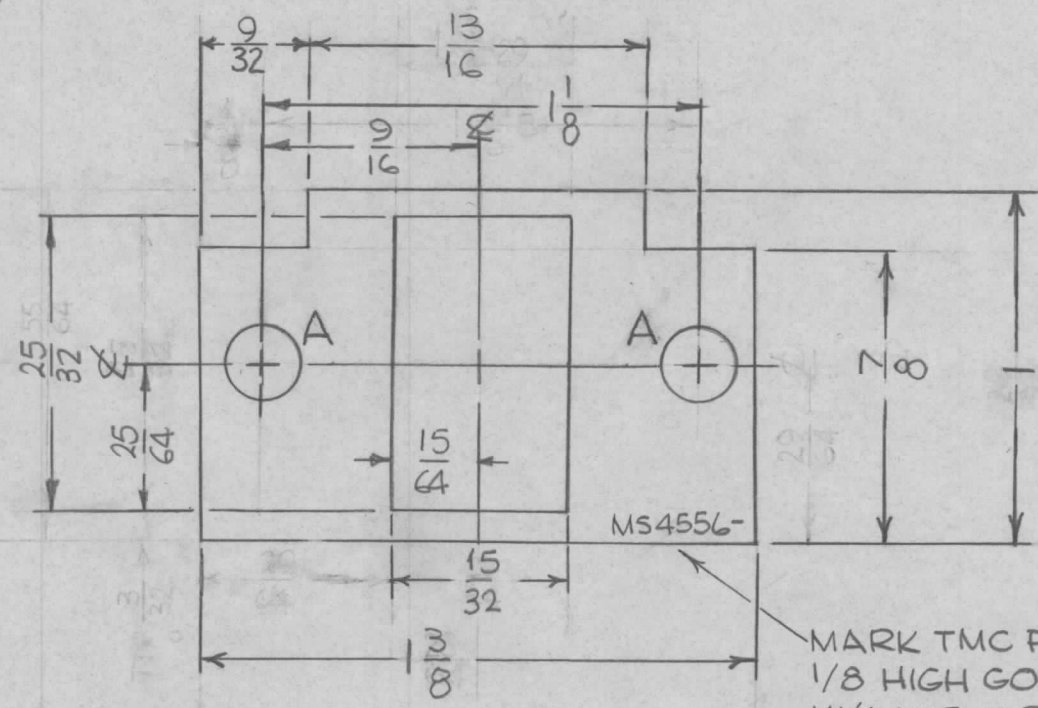
STAMP TMC P/No 1/8 HIGH GOTHIC WITH LATEST REV. LETTER

						REQ. ITEM	PART NO.	F. BUDETTI	DESCRIPTION	SYMBOL	
							.031 THK		THE TECHNICAL MATERIEL CORP.		
							STOCK SIZE		MAMARONECK.		
							ALUMINUM		NEW YORK		
							MATERIAL		COVER, GEAR BOX		
\emptyset	ORIGINAL RELEASE	2/15/66									
SYM	DESCRIPTION	DATE	CH. NO.	DRAFTS	CHECKER	ENG. APP.					
UNLESS OTHERWISE SPECIFIED DIMENSIONS ARE IN INCHES AND INCLUDE CHEMICALLY APPLIED OR PLATED FINISHES		SCALE		1:1			5052-H32	G.D.L.			
DECIMALS .X \pm .05 .XX \pm .01 .XXX \pm .005	TOLERANCES	FRACTIONS \pm 1/64 ANGLES \pm 0° 30'	CODE A				TYPE & TEMPER	HEAT TREAT. SPEC.	DRAWN	CHECKED	FINAL APPROVAL
							S404 YEL. IRIDITE				MS4555 \emptyset
							FINISH & SPEC. NO.	ELEC. DES. APP.	MECH. DES. APP.		

HOLES

A=11/64 DIA. (2REQ.)

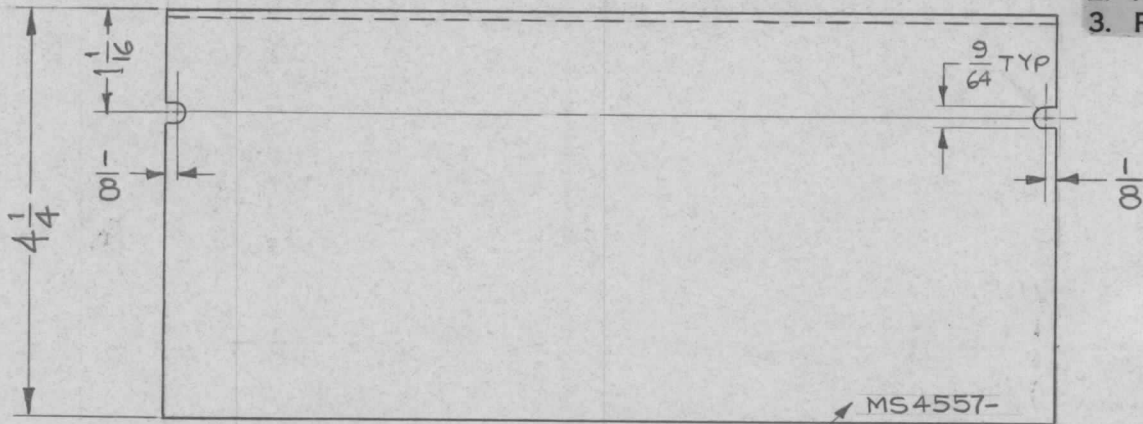
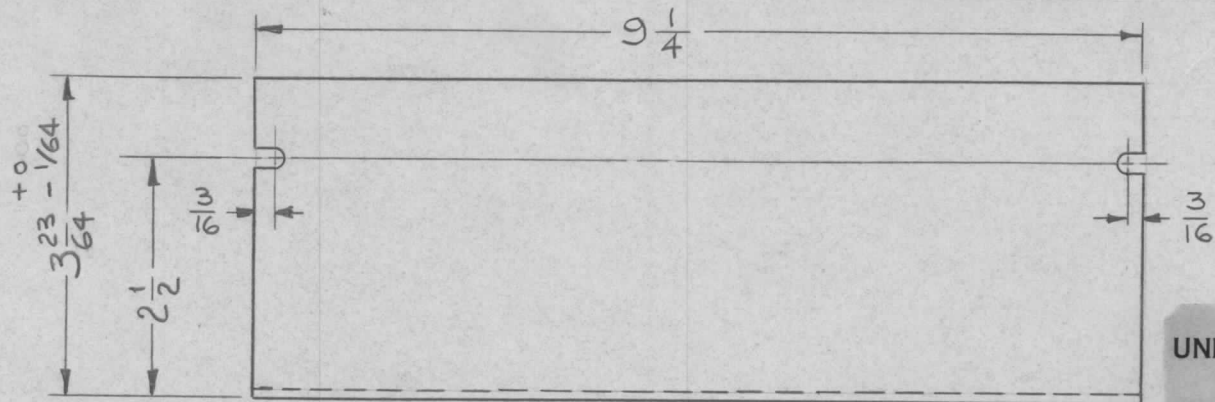
REQ. PER UNIT	USED ON		MS 4556 \emptyset
	MODEL	DATE	
2	TSTE-10K	5-4-65	



MARK TMC PART NO.
1/8 HIGH GOTHIC
W/LATEST REV.
LETTER

SYM	DESCRIPTION	DATE	CH. NO.	DRAFTS	CHECKER	ENG. APP.	REQ. ITEM	PART NO.	F. BUDETTI DESCRIPTION	SYMBOL
\emptyset	ORIGINAL RELEASE	2/15/66								
X2	MARK TMC P/N ETC. ADDED	2-9-66	-A	JC	JCB		.081 THICK		THE TECHNICAL MATERIEL CORP. MAMARONECK. NEW YORK	
X1	13/16 WAS 25/32, 7/8 WAS 3/4	5-11-65	X1	SRG	CA	PS.	ALUMINUM		SHIM, COUNTER	
							MATERIAL			
							5052-H32		DA	JCB
							TYPE & TEMPER	HEAT TREAT. SPEC.	DRAWN	CHECKED
							5404 YEL. IRIDITE		DA	
							FINISH & SPEC. NO.	ELEC. DES. APP.	MECH. DES. APP.	MS4556 \emptyset

REQ. PER UNIT	USED ON			MS4557 ϕ
	MODEL	ASS'Y. NO.	DATE	
1	TST () 10K		5.7.65	



UNLESS OTHERWISE SPECIFIED:

1. USE MATERIAL THICKNESS FOR MAXIMUM RADIUS ON ALL BENDS
2. ALL ANGULAR BENDS 90 DEGREES
3. REMOVE ALL BURRS AND SHARP EDGES

MS4557-

MARK TMC PART NO.
1/8 HIGH GOTHIC,
WITH LATEST REV. LETTER

REQ.	ITEM	PART NO.	F. BUDETTI DESCRIPTION			SYMBOL
		.064 THK	THE TECHNICAL MATERIEL CORP.			
		STOCK SIZE	MAMARONECK, NEW YORK			
ϕ	ORIGINAL RELEASE	2/15/66	ALUMINUM			COVER, BANDSWITCH, REAR
SYM	DESCRIPTION	DATE	CH. NO.	DRAFTS	CHECKER	ENG. APP.
UNLESS OTHERWISE SPECIFIED DIMENSIONS ARE IN INCHES AND INCLUDE CHEMICALLY APPLIED OR PLATED FINISHES		SCALE	1:2			
DECIMALS .X \pm .05 .XX \pm .01 .XXX \pm .005	TOLERANCES	FRACTIONS \pm 1/64 ANGLES \pm 0° 30'	CODE A			
		5052-H32	TYPE & TEMPER	HEAT TREAT. SPEC.	DRAWN	CHECKED
		S404 YEL. IRIDITE				
		FINISH & SPEC. NO.	ELEC. DES. APP.	MECH. DES. APP.	MS4557 ϕ	

HOLES:

A - 13/64 DIA

B - 15/64 DIA

REQ

3

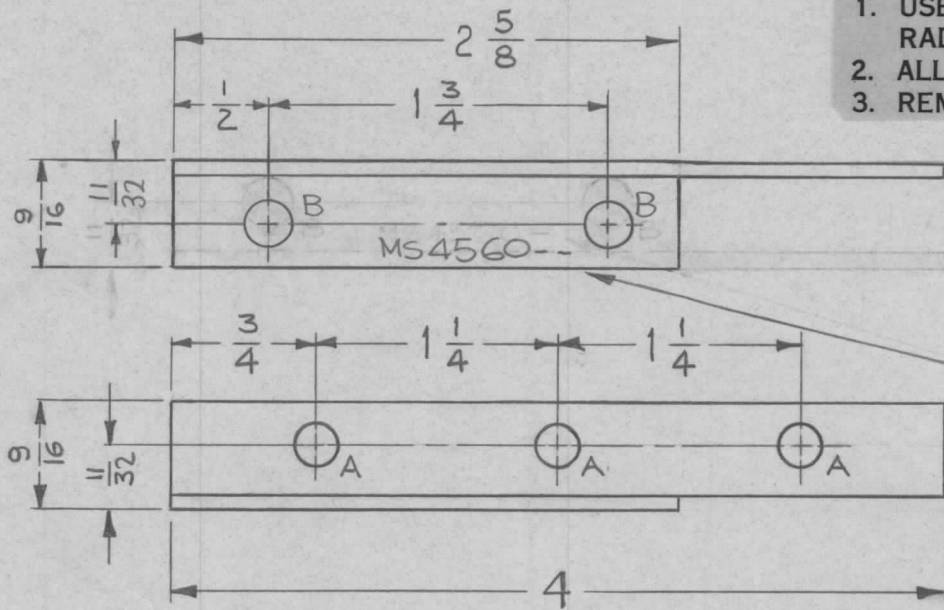
2

REQ. PER UNIT	USED ON		
	MODEL	ASS'Y. NO.	DATE
1 EA.	TST () 10K		5.7.65

MS4560-Ø

UNLESS OTHERWISE SPECIFIED:

1. USE MATERIAL THICKNESS FOR MAXIMUM RADIUS ON ALL BENDS
2. ALL ANGULAR BENDS 90 DEGREES
3. REMOVE ALL BURRS AND SHARP EDGES



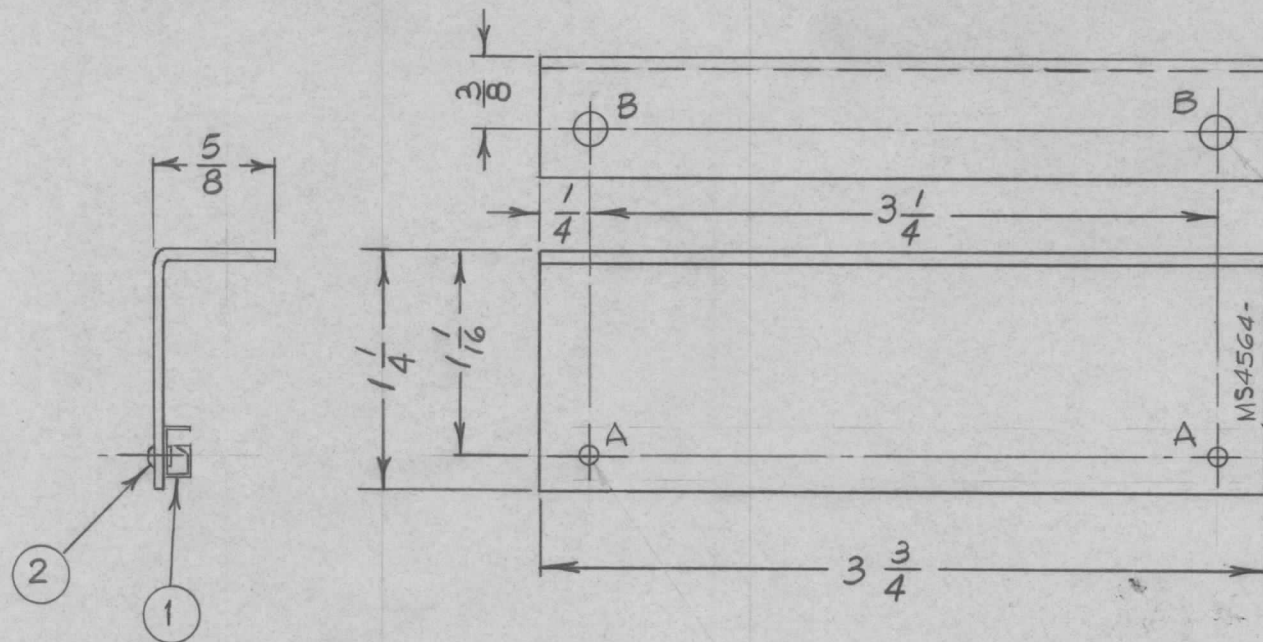
MARK TMC PART NO
1/8 HIGH GOTHIC, WITH
LATEST REVISION LETTER

NOTE:

MS4560-1 ~ AS SHOWN
MS4560-2 ~ OPPOSITE HAND

							REQ. ITEM	PART NO.	F. BUDETTI	DESCRIPTION	SYMBOL	
								.081 THK	THE TECHNICAL MATERIEL CORP. MAMARONECK, NEW YORK			
								STOCK SIZE	BRACKET, MTG., CAP.			
Ø	ORIGINAL RELEASE FOR PRODUCTION	2-16-66	MA	Jc				ALUMINUM				
SYM	DESCRIPTION	DATE	CH. NO.	DRAFTS	CHECKER	ENG. APP.		MATERIAL				
UNLESS OTHERWISE SPECIFIED DIMENSIONS ARE IN INCHES AND INCLUDE CHEMICALLY APPLIED OR PLATED FINISHES		SCALE		1:1				5052-H32	hjb	JCB	M. H. H.	
DECIMALS .X ± .05 .XX ± .01 .XXX ± .005	TOLERANCES	FRACTIONS ± 1/64 ANGLES ± 0° 30'	CODE A					TYPE & TEMPER	HEAT TREAT. SPEC.	DRAWN	CHECKED	FINAL APPROVAL
								S404 YEL. IRIDITE				MS4560-Ø
								FINISH & SPEC. NO.	ELEC. DES. APP.	MECH. DES. APP.		

REQ. PER UNIT	USED ON		MS4564	∅
	MODEL	ASS'Y. NO.		
2	CMRA-1		5-4-65	



HOLES
 A #40DRILL
 (.0980IA) REQ 2
 B 1/16 DIA 2

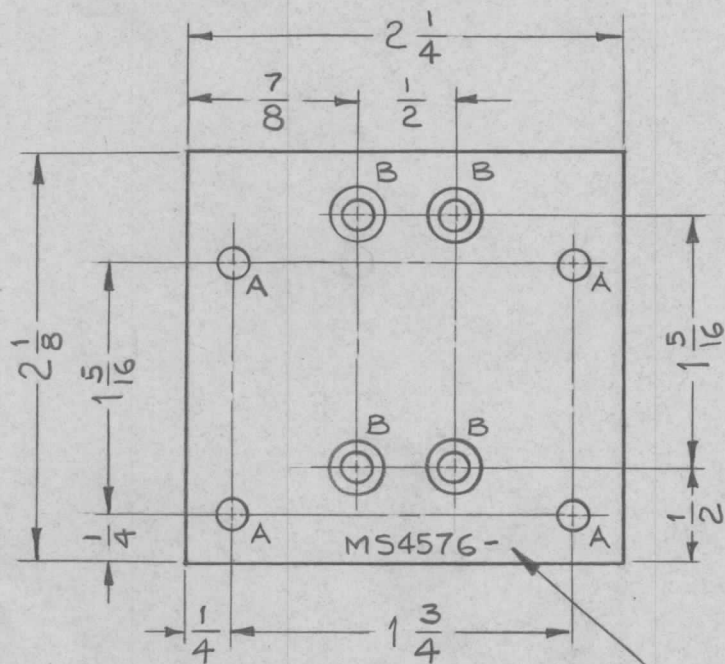
MOUNT AFTER FINISHING

METAL STAMP TMC PART NO. 1/8 HIGH GOTHIC,
 W/LATEST REV. LETTER.

2	2	EY101-3	EYELET, MTL		
1	1	CU157-1	RETAINER, PC BOARD		
REQ.	ITEM	PART NO.	ZETENA	DESCRIPTION	SYMBOL
.062 THK STOCK SIZE			THE TECHNICAL MATERIEL CORP. MAMARONECK, NEW YORK		
ALUMINUM MATERIAL			BRACKET, M.TG., PC BOARD		
∅	ORIGINAL RELEASE FOR PRODUCTION	5/4/65	HA	HLA	
SYM	DESCRIPTION	DATE	CH. NO.	DRAFTS	CHECKER ENG. APP.
UNLESS OTHERWISE SPECIFIED DIMENSIONS ARE IN INCHES AND INCLUDE CHEMICALLY APPLIED OR PLATED FINISHES		SCALE	1:1		
DECIMALS .X ± .05 .XX ± .01 .XXX ± .005	TOLERANCES	FRACTIONS ± 1/64 ANGLES ± 0° 30'	CODE		
5052 H32		HEAT TREAT. SPEC.	H. AUSTIN		QC/B
S404 YEL. IRIDITE		FINISH & SPEC. NO.	DRAWN		CHECKED
		ELEC. DES. APP.	MECH. DES. APP.		MS4564 ∅

REQ. PER UNIT	USED ON		
	MODEL	ASS'Y. NO.	DATE
1	GPT200K	AR137	5.6.65
1	GPT200K	AR138	5.6.65

MS4576 Ø



HOLES:

REQ -

- A ~ 11/64 DIA _____ 4
 B ~ DRILL .144 DIA C'SINK 82° TO .284 DIA - 4

NOTE:

REMOVE ALL BURRS & SHARP EDGES

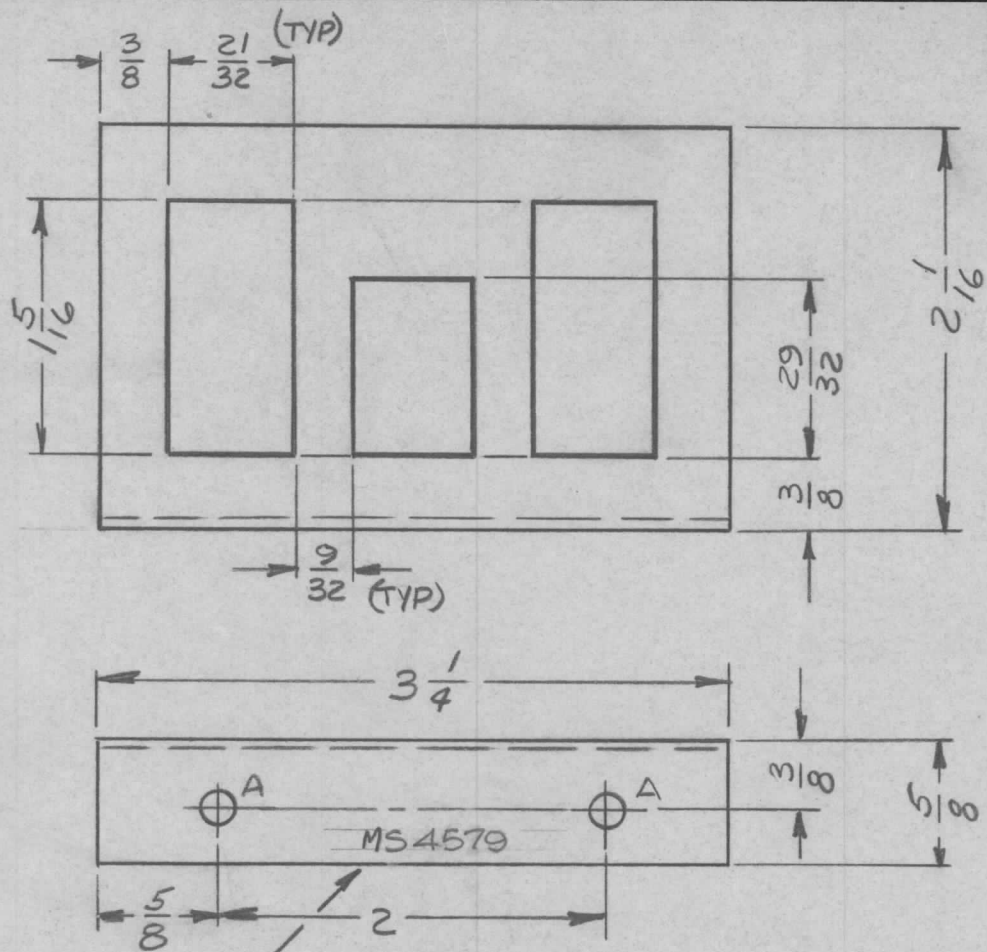
METAL STAMP TMC P/N 1/8 HIGH GOTHIC, WITH LATEST REV. LETTER

REQ.	ITEM	PART NO.	F. BUDETTI	DESCRIPTION	SYMBOL
		1/8 THK		THE TECHNICAL MATERIEL CORP.	
		STOCK SIZE		MAMARONECK, NEW YORK	
Ø		ALUMINUM		PLATE, MTG., RELAY	
		MATERIAL			
		5052-H32	<i>hbs</i>	<i>MS</i>	
		TYPE & TEMPER		CHECKED	
		HEAT TREAT. SPEC.		FINAL APPROVAL	
		S404 YEL. IRIDITE	<i>aa</i>		MS4576 Ø
		FINISH & SPEC. NO.		ELEC. DES. APP.	MECH. DES. APP.

UNLESS OTHERWISE SPECIFIED DIMENSIONS ARE IN INCHES AND INCLUDE CHEMICALLY APPLIED OR PLATED FINISHES	SCALE 1:1	CODE A
---	--------------	-----------

DECIMALS .X ± .05 .XX ± .01 .XXX ± .005	TOLERANCES	FRACTIONS ± 1/64 ANGLES ± 0° 30'
--	------------	---

Ø	ORIGINAL RELEASE FOR PRODUCTION	5/16/67	Ø	CV	<i>JD</i>
SYM	DESCRIPTION	DATE	CH. NO.	DRAFTS	CHECKER



METAL STAMP TMC P/N,
WITH LATEST REV. LETTER

REQ. PER UNIT	USED ON			MS 4579	∅
	MODEL	ASS'Y. NO.	DATE		
1	RGCB-1		5-6-65		

HOLE	DESCRIPTION	REQ.
A	11/64 DIA	2

UNLESS OTHERWISE SPECIFIED:

1. USE MATERIAL THICKNESS FOR MAXIMUM RADIUS ON ALL BENDS
2. ALL ANGULAR BENDS 90 DEGREES
3. REMOVE ALL BURRS AND SHARP EDGES
4. MOUNT INSERTS AFTER FINISHING

REF: LD1899

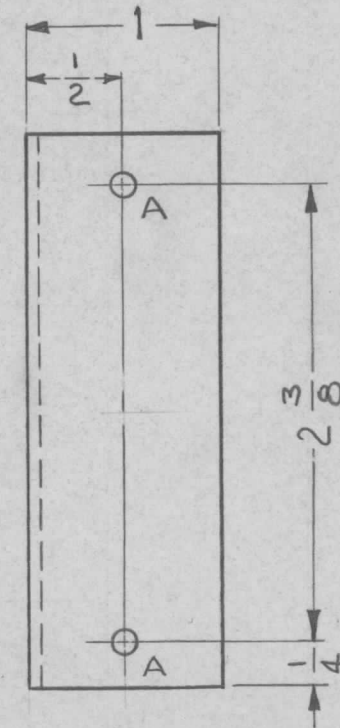
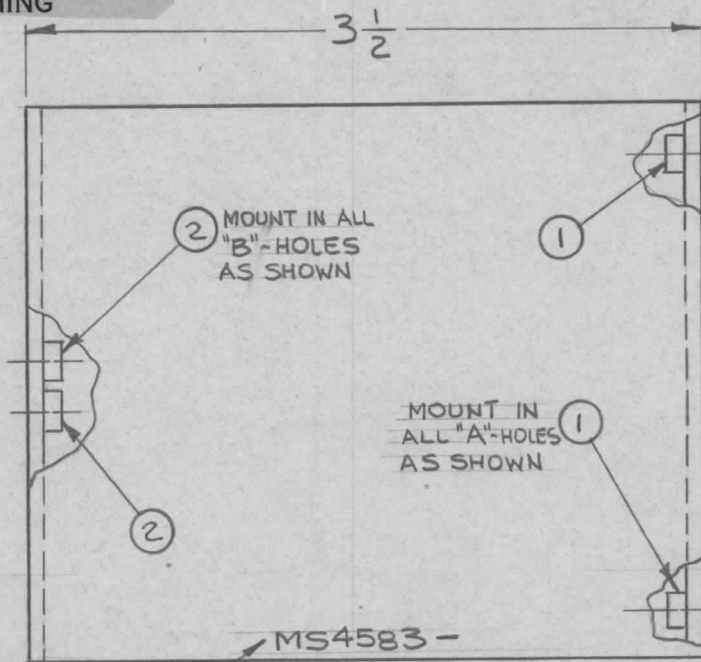
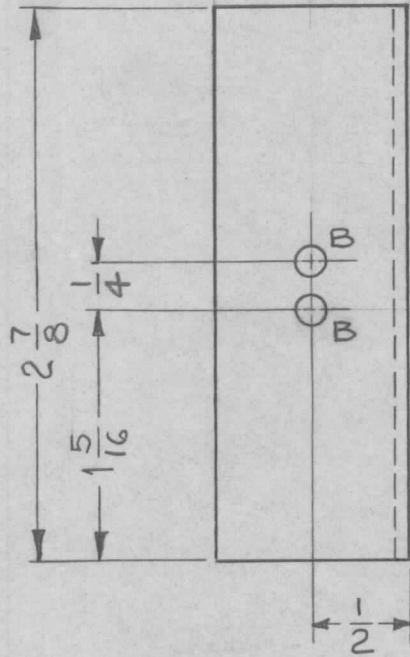
REQ. ITEM	PART NO.	F. EATON	DESCRIPTION	SYMBOL		
	.062		THE TECHNICAL MATERIEL CORP.			
	STOCK SIZE		MAMARONECK, NEW YORK			
	ALUMINUM		BRACKET, MOUNTING, RELAY			
	MATERIAL					
∅	ORIGINAL RELEASE FOR PRODUCTION	5/7/65	#	J.M.		
SYM	DESCRIPTION	DATE	CH. NO.	DRAFTS	CHECKER	ENG. APP.
UNLESS OTHERWISE SPECIFIED DIMENSIONS ARE IN INCHES AND INCLUDE CHEMICALLY APPLIED OR PLATED FINISHES		SCALE				
		1:1				
DECIMALS	FRACTIONS	CODE				
.X ± .05	± 1/64	A				
.XX ± .01	ANGLES					
.XXX ± .005	± 0° 30'					
5052-H32		5404 VEL. IRIDITE				
TYPE & TEMPER	HEAT TREAT. SPEC.	DRAWN	CHECKED	FINAL APPROVAL		
		W. JORPAN	5/14/65	MS4579 ∅		
FINISH & SPEC. NO.		ELEC. DES. APP.	MECH. DES. APP.			

UNLESS OTHERWISE SPECIFIED:

1. USE MATERIAL THICKNESS FOR MAXIMUM RADIUS ON ALL BENDS
2. ALL ANGULAR BENDS 90 DEGREES
3. REMOVE ALL BURRS AND SHARP EDGES
4. MOUNT INSERTS AFTER FINISHING

REQ. PER UNIT	USED ON	
	MODEL	ASS'Y. NO. DATE
1	GPT 10K	5.7.1965
4	GPT 40K	5.7.1965

MS4583 \emptyset



MARK TMC PART NO. $\frac{1}{8}$ HIGH GOTHIC, WITH LATEST REV. LETTER

HOLES	REQ
A - .191 - .194 DIA	2
B - .221 - .224 DIA	2

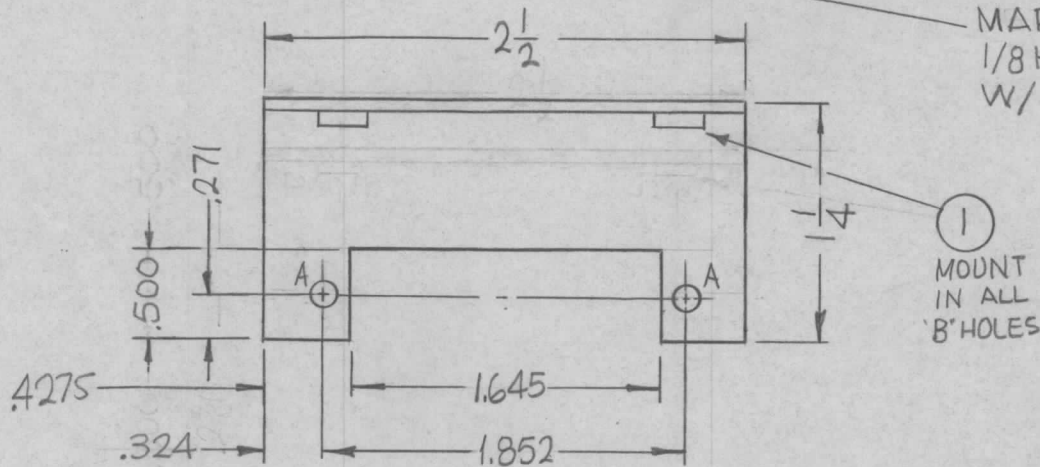
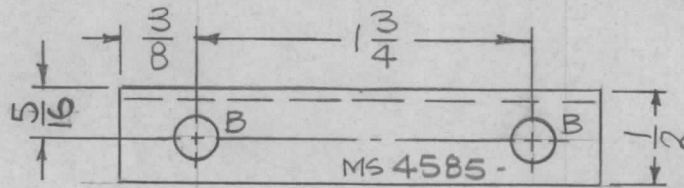
REQ.	ITEM	PART NO.	DESCRIPTION	SYMBOL
2	2	NT129-832-4	NUT, PLAIN, SPLINE	B
2	1	NT129-632-4	NUT, PLAIN, SPLINE	A

SYM	DESCRIPTION	DATE	CH. NO.	DRAFTS	CHECKER	ENG. APP.
\emptyset	ORIGINAL RELEASE	2/15/66				<i>HQ</i>
UNLESS OTHERWISE SPECIFIED DIMENSIONS ARE IN INCHES AND INCLUDE CHEMICALLY APPLIED OR PLATED FINISHES		SCALE	1:1			
DECIMALS	TOLERANCES	FRACTIONS	CODE			
.X \pm .05		\pm 1/64	A			
.XX \pm .01		ANGLES				
.XXX \pm .005		\pm 0° 30'				

REQ.	ITEM	PART NO.	F. BUDETTI	DESCRIPTION	SYMBOL
		.081 THK	THE TECHNICAL MATERIEL CORP. MAMARONECK, NEW YORK		
		STOCK SIZE	BRACKET, MTG., COVER		
		ALUMINUM	MATERIAL		
		5052-H32	<i>Job</i>	<i>CB</i>	<i>M. H. Hay</i>
		TYPE & TEMPER	HEAT TREAT. SPEC.	DRAWN	CHECKED
		S404 YEL. IRIDITE			
		FINISH & SPEC. NO.	ELEC. DES. APP.	MECH. DES. APP.	
					MS4583 \emptyset

M/

REQ. PER UNIT	USED ON			MS4585 \emptyset
	MODEL	ASS'Y. NO.	DATE	
1	TST ()10K		5-5-65	



HOLES:
 A - 1/8 DIA. (2 REQ.)
 B - .221-.224 DIA. (2 REQ.)

UNLESS OTHERWISE SPECIFIED:

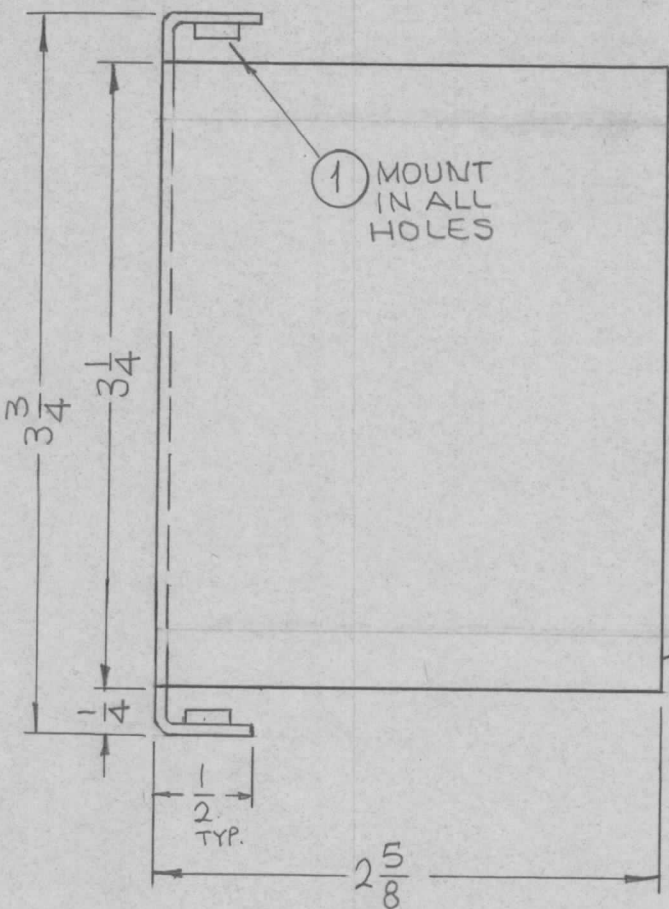
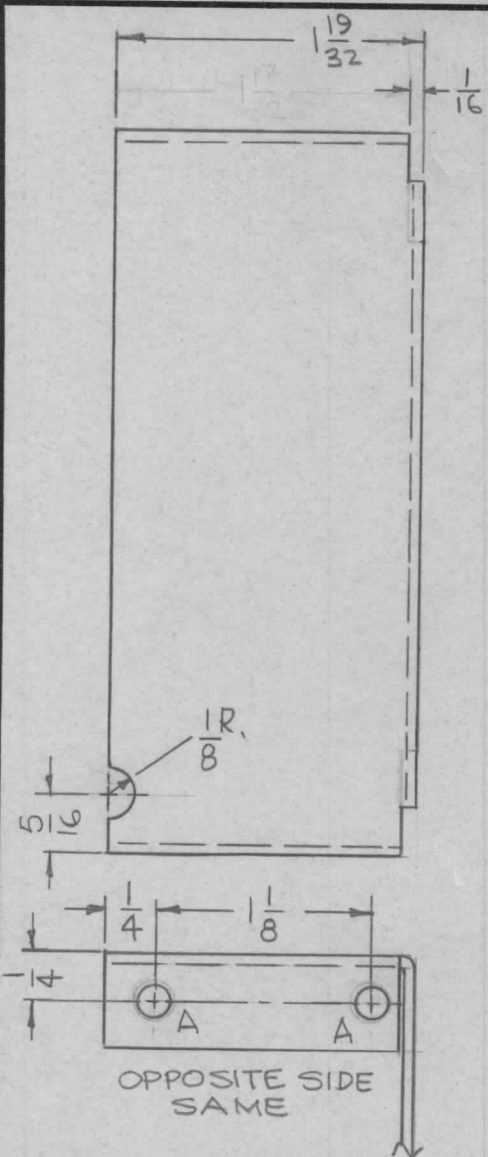
1. USE MATERIAL THICKNESS FOR MAXIMUM RADIUS ON ALL BENDS
2. ALL ANGULAR BENDS 90 DEGREES
3. REMOVE ALL BURRS AND SHARP EDGES
4. MOUNT INSERTS AFTER FINISHING

REF: LD 1923 (FOR REF ONLY)

2	1	NT129-832-4	NUT, PLAIN, SPLINE	B
REQ.	ITEM	PART NO.	F. BUDETTI DESCRIPTION	SYMBOL
		.081 THICK	THE TECHNICAL MATERIEL CORP.	
		STOCK SIZE	MAMARONECK, NEW YORK	
		ALUMINUM	BRACKET, MTG. CONNECTOR	
		MATERIAL		
		5052-H32	SRG	13/13 Han
		TYPE & TEMPER	CHECKED	FINAL APPROVAL
		HEAT TREAT. SPEC.		
		S404 YEL. IRIDITE		MS4585 \emptyset
		FINISH & SPEC. NO.	ELEC. DES. APP.	MECH. DES. APP.

\emptyset	ORIGINAL RELEASE	2/17/66				
X1	5/16 WAS 1/4	5-14-65	X1	SRG		
SYM	DESCRIPTION	DATE	CH. NO.	DRAFTS	CHECKER	ENG. APP.
UNLESS OTHERWISE SPECIFIED DIMENSIONS ARE IN INCHES AND INCLUDE CHEMICALLY APPLIED OR PLATED FINISHES		SCALE	1:1			
DECIMALS	TOLERANCES	FRACTIONS	CODE			
.X \pm .05		\pm 1/64	A			
.XX \pm .01		ANGLES				
.XXX \pm .005		\pm 0° 30'				

REQ. PER UNIT	USED ON			MS4586 ∅
	MODEL	ASS'Y. NO.	DATE	
1	TST-10K		6-29-65	



HOLES:
A- .161 -.164 DIA. (4 REQ.)

UNLESS OTHERWISE SPECIFIED:

1. USE MATERIAL THICKNESS FOR MAXIMUM RADIUS ON ALL BENDS
2. ALL ANGULAR BENDS 90 DEGREES
3. REMOVE ALL BURRS AND SHARP EDGES
4. MOUNT INSERTS AFTER FINISHING

MARK TMC PART NO. (MS4586-) 1/8 HIGH GOTHIC W/LATEST REV. LETTER ON REAR.

FRONT VIEW

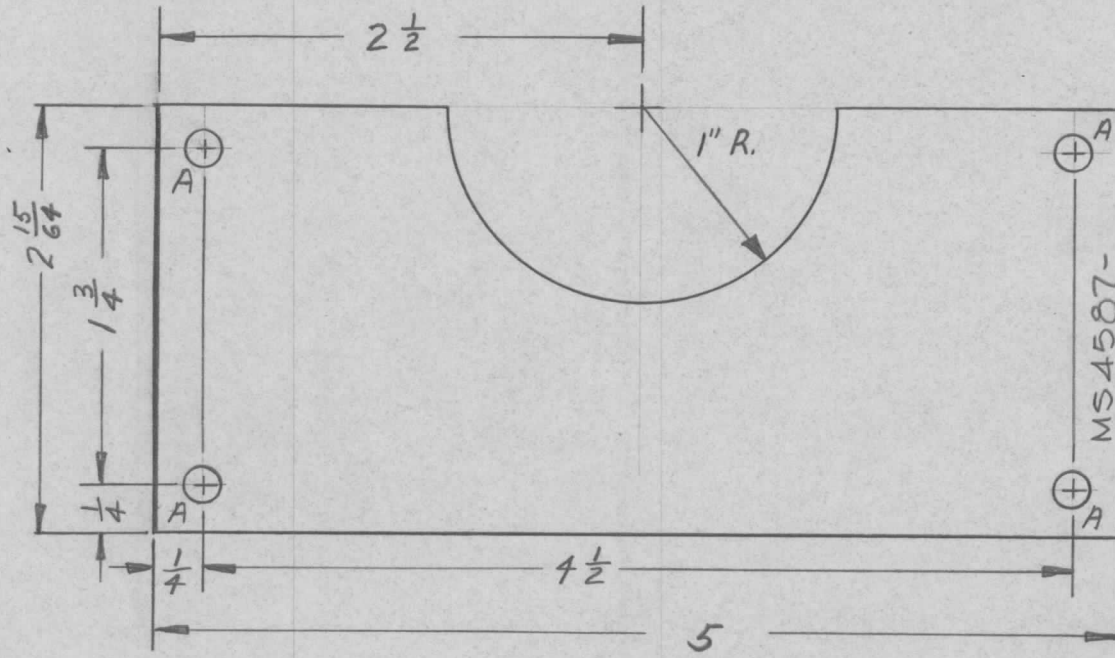
REF. LD1955

4	1	NT129-440-3	NUT, PLAIN, SPLINE		
REQ. ITEM	PART NO.		F. BUDETTI DESCRIPTION		SYMBOL
.051 THICK			THE TECHNICAL MATERIEL CORP.		
STOCK SIZE			MAMARONECK, NEW YORK		
ALUMINUM			SHI SHIELD, RF		
MATERIAL					
5052-H32					
TYPE & TEMPER		HEAT TREAT. SPEC.	DRAWN	CHECKED	FINAL APPROVAL
S404 YEL TRIDITE					
FINISH & SPEC. NO.			ELEC. DES. APP.	MECH. DES. APP.	
					MS4586 ∅

∅	ORIGINAL RELEASE FOR PRODUCTION	2-16-66	AA	Jc		
X2	COMPLETELY REVISED	6-29-65	X2	MS	pb.	
X1	1/8 R. CUTOUT ADDED	6-28-65	X1	MS	DS	
SYM	DESCRIPTION	DATE	CH. NO.	DRAFTS	CHECKER	ENG. APP.
UNLESS OTHERWISE SPECIFIED DIMENSIONS ARE IN INCHES AND INCLUDE CHEMICALLY APPLIED OR PLATED FINISHES		SCALE 1:1				
DECIMALS .X ± .05 .XX ± .01 .XXX ± .005	TOLERANCES	FRACTIONS ± 1/64 ANGLES ± 0° 30'	CODE A			

A - $\frac{11}{64}$ D. 4 REQ.

REQ. PER UNIT	USED ON			MS4587 \emptyset
	MODEL	ASS'Y. NO.	DATE	
2	TSTE10K/AX563		13 MAY 65	



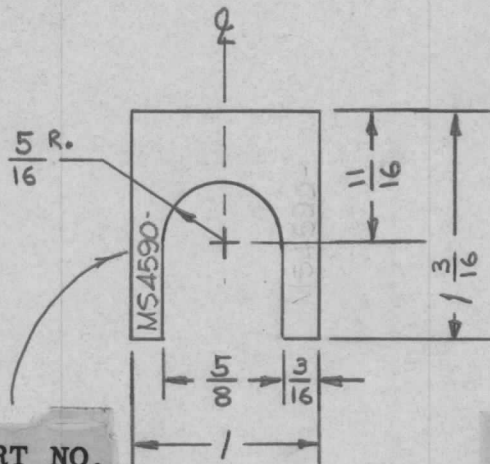
METAL STAMP TMC PART NO.

1/8 HIGH GOTHIC

W/LATEST REVISION LETTER.

SYM	DESCRIPTION	DATE	CH. NO.	DRAFTS	CHECKER	ENG. APP.	REQ. ITEM	PART NO.	DESCRIPTION	SYMBOL
\emptyset	ORIGINAL RELEASE FOR PRODUCTION	5/16/67	\emptyset	CV		<i>JDe</i>	.064 THK.	THE TECHNICAL MATERIEL CORP. MAMARONECK, NEW YORK		
X	EXPERIMENTAL RELEASE	5/13/65	AA	BM			ALUMINUM	PLATE, COVER		
							MATERIAL	CABLE ACCESS HOLE		
							5052-H32	<i>BM</i>	<i>BM</i>	<i>BM</i>
							TYPE & TEMPER	DRAWN	CHECKED	FINAL APPROVAL
							S404 YEL. IRIDITE	<i>aa</i>		MS4587 \emptyset
							FINISH & SPEC. NO.	ELEC. DES. APP.	MECH. DES. APP.	

REQ. PER UNIT	USED ON			MS4590 \emptyset
	MODEL	ASS'Y. NO.	DATE	
2	DOR-52		5-13-65	



METAL STAMP TMC PART NO.
1/8 HIGH GOTHIC.

W/LATEST REV. LETTER

FINISH NOTES:

1. S404 - IRIDITE 14-2 AL-COAT.
2. S114 - ZINC CHROMATE PRIMER } FRONT AND
3. S115 - SMOOTH GRAY ENAMEL } EDGES ONLY

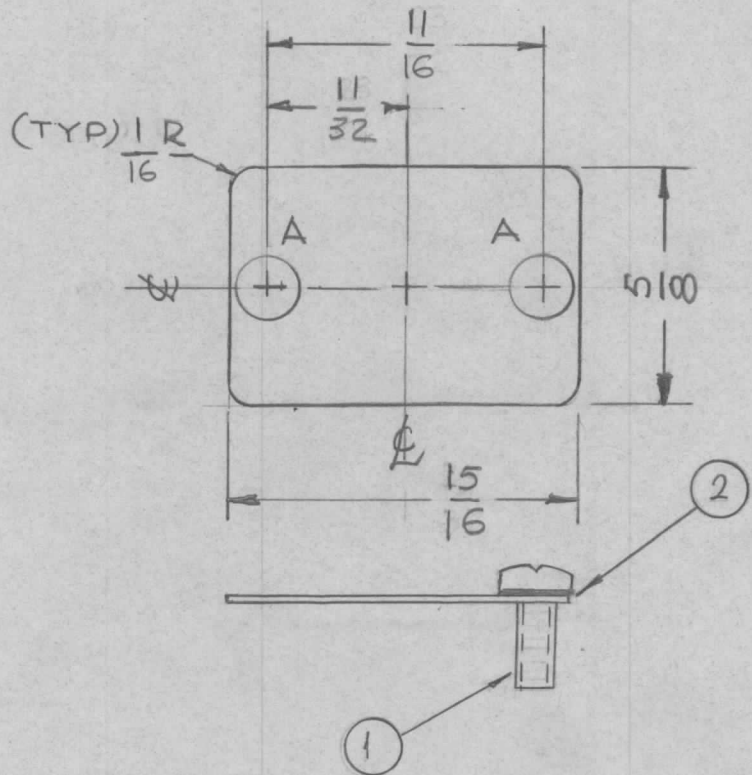
REF-LD1901

REQ.	ITEM	PART NO.	STURMER DESCRIPTION				SYMBOL
		.064	THE TECHNICAL MATERIEL CORP. MAMARONECK, NEW YORK				
		STOCK SIZE	ALUMINUM				PLATE, FUSE, IDENTIFICATION
\emptyset	ORIGINAL RELEASE FOR PRODUCTION	9/3/65	\emptyset	Z.V.V.			
SYM	DESCRIPTION	DATE	CH. NO.	DRAFTS	CHECKER	ENG. APP.	
UNLESS OTHERWISE SPECIFIED DIMENSIONS ARE IN INCHES AND INCLUDE CHEMICALLY APPLIED OR PLATED FINISHES		SCALE		1:1			
DECIMALS .X \pm .05 .XX \pm .01 .XXX \pm .005	TOLERANCES	FRACTIONS \pm 1/64 ANGLES \pm 0° 30'	CODE				
					5052-H32	M. STURMER 5-13-65	9/3/65
					TYPE & TEMPER	HEAT TREAT. SPEC.	DRAWN
					SEE NOTES		
					FINISH & SPEC. NO.	ELEC. DES. APP.	MECH. DES. APP.
							MS4590 \emptyset

REQ. PER UNIT	USED ON			MS4592 Ø
	MODEL	ASS'Y. NO.	DATE	
6	RFC-1B	KIT 187	5-19-65	

HOLE ~

A - 11/64 DIA. 2 REQ.

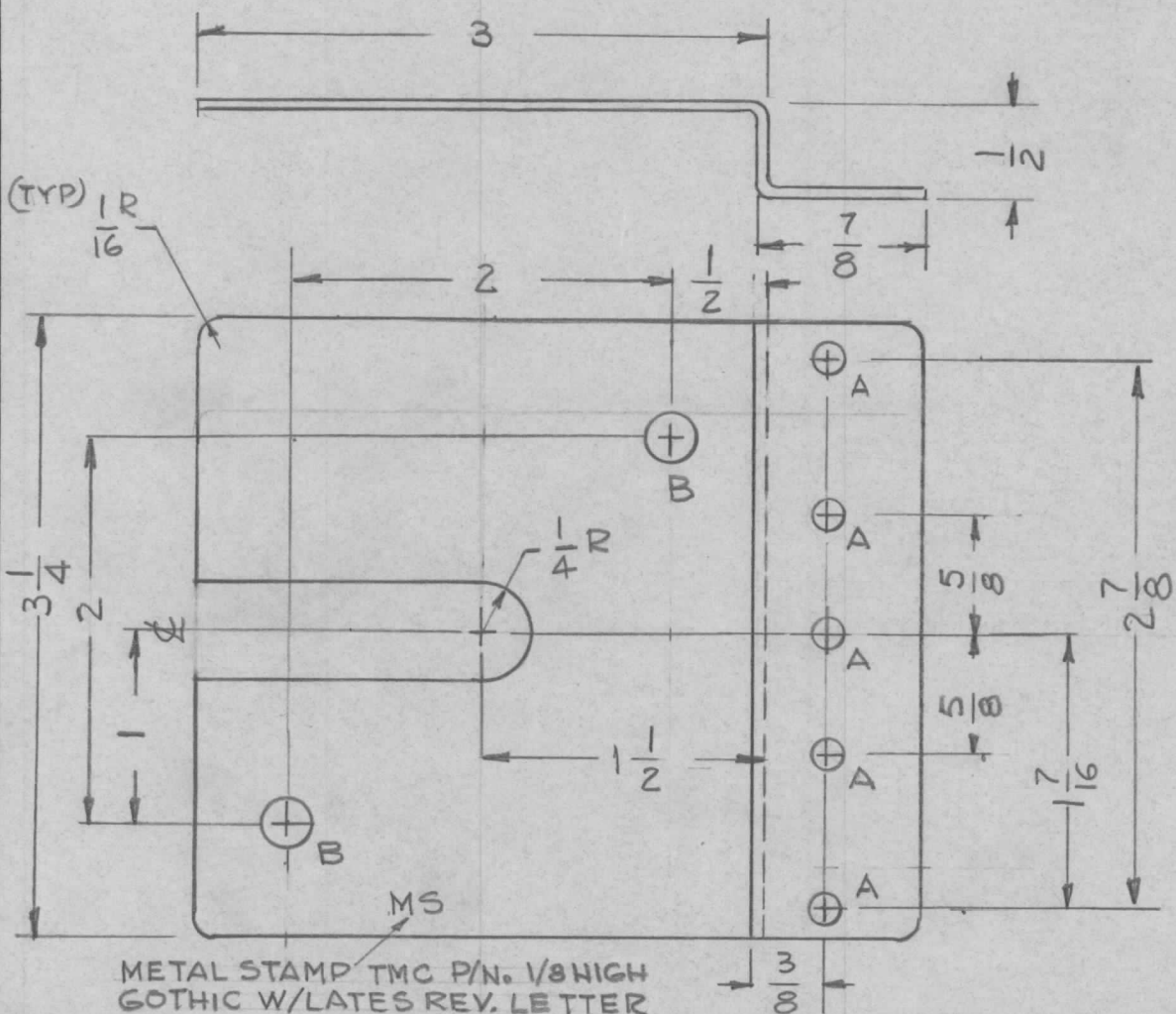


X	2	BS 100	SOLDER, TIN ALLOY
1	1	SCBPO632BN7	SCREW, MACHINE

Ø	ORIGINAL RELEASE FOR PRODUCTION	5-21-65	✓	CVL		
X1	COMPLETELY REVISED	5-21-65	✓	SDL		
SYM	DESCRIPTION	DATE	CH. NO.	DRAFTS	CHECKER	ENG. APP.
UNLESS OTHERWISE SPECIFIED DIMENSIONS ARE IN INCHES AND INCLUDE CHEMICALLY APPLIED OR PLATED FINISHES		SCALE 2:1				
DECIMALS .X ± .05 .XX ± .01 .XXX ± .005	TOLERANCES	FRACTIONS ± 1/64 ANGLES ± 0° 30'	CODE A			

REQ. ITEM	PART NO.	DESCRIPTION	SYMBOL
	.010 ⁺ : .005 ⁻ THK.	THE TECHNICAL MATERIEL CORP. MAMARONECK, NEW YORK	
	STOCK SIZE		
	COPPER	STRAP, CAPACITOR	
	MATERIAL		
SOFT ROLLED		G.D.L.	10 5/16/65
TYPE & TEMPER	HEAT TREAT. SPEC.	DRAWN	CHECKED
NATURAL		AB	
FINISH & SPEC. NO.	ELEC. DES. APP.	MECH. DES. APP.	MS4592 Ø

REQ. PER UNIT	USED ON			MS4593 \emptyset
	MODEL	ASS'Y. NO.	DATE	
1	RFC-1B	KIT. 187	5-19-65	



HOLES

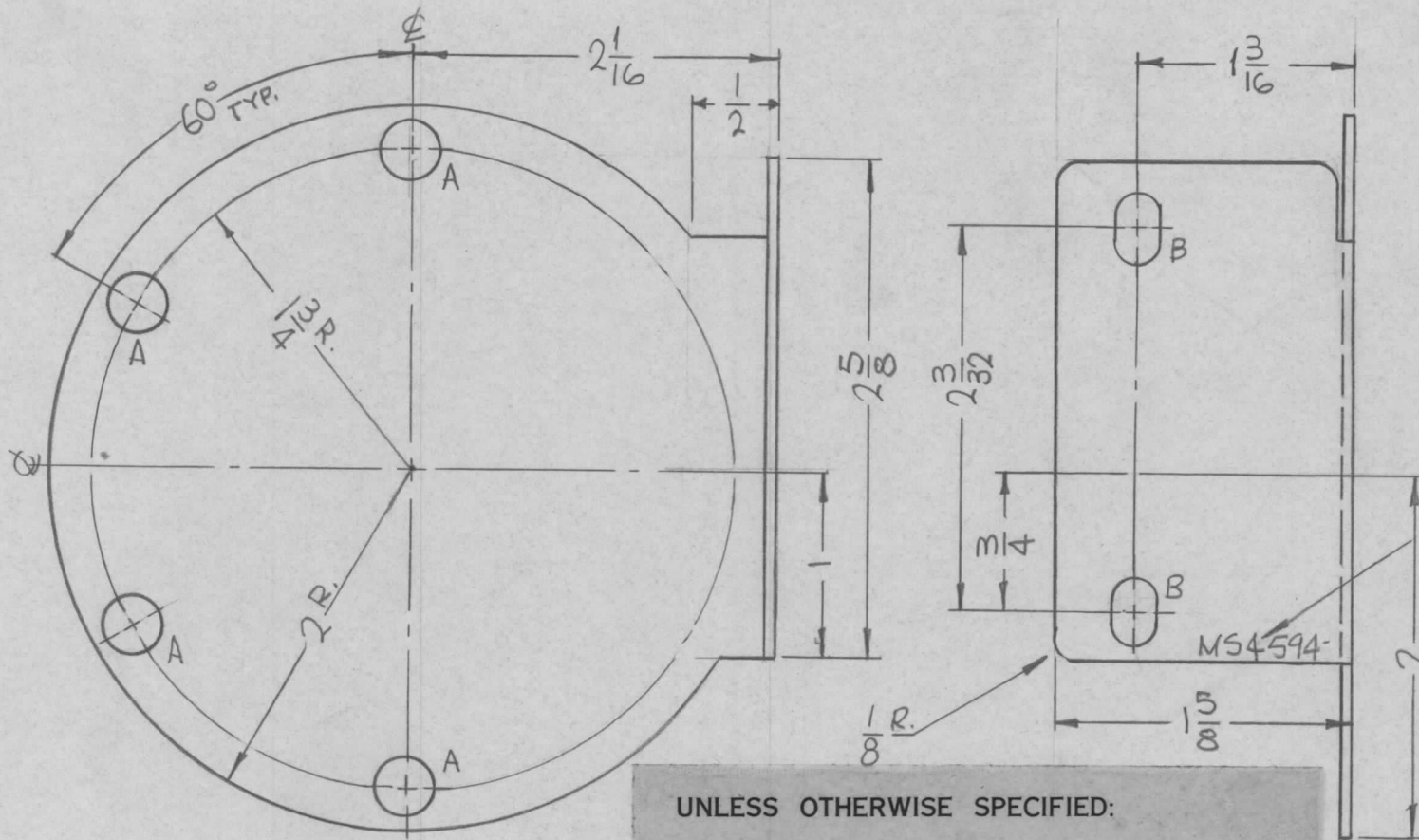
A	11/64	5 REQ
B	1/4 DIA	2 REQ.

UNLESS OTHERWISE SPECIFIED:

1. USE MATERIAL THICKNESS FOR MAXIMUM RADIUS ON ALL BENDS
2. ALL ANGULAR BENDS 90 DEGREES
3. REMOVE ALL BURRS AND SHARP EDGES

						REQ. ITEM	PART NO.	F. BUDETTI	DESCRIPTION	SYMBOL
							.062 THK.		THE TECHNICAL MATERIEL CORP.	
							STOCK SIZE		MAMARONECK.	
							ALUMINUM		NEW YORK	
							MATERIAL		BRACKET, MTG. CAPACITOR	
\emptyset	ORIGINAL RELEASE FOR PRODUCTION	5-21-65	4	CJL						
SYM	DESCRIPTION	DATE	CH. NO.	DRAFTS	CHECKER	ENG. APP.				
UNLESS OTHERWISE SPECIFIED DIMENSIONS ARE IN INCHES AND INCLUDE CHEMICALLY APPLIED OR PLATED FINISHES		SCALE				1:1				
DECIMALS	TOLERANCES	FRACTIONS	CODE							
.X \pm .05		\pm 1/64	A							
.XX \pm .01		ANGLES								
.XXX \pm .005		\pm 0° 30'								
							5052-H32	G.D.L.	FILE 5/19/65	2B Miller 5/24/65
							TYPE & TEMPER	HEAT TREAT. SPEC.	DRAWN	CHECKED
							3404 YEL. IRIDITE	LB		
							FINISH & SPEC. NO.	ELEC. DES. APP.	MECH. DES. APP.	MS4593 \emptyset

REQ. PER UNIT	USED ON		MS4594 \emptyset
	MODEL	ASS'Y. NO.	
1	TSTE-10K		5-24-65



HOLES:
 A ~ 5/16 DIA. (4REQ.)
 B ~ 15/64 X 3/8 SLOT (2REQ.)

STAMP TMC PART NO. 1/8 HIGH GOTHIC W/LATEST REV. LETTER.

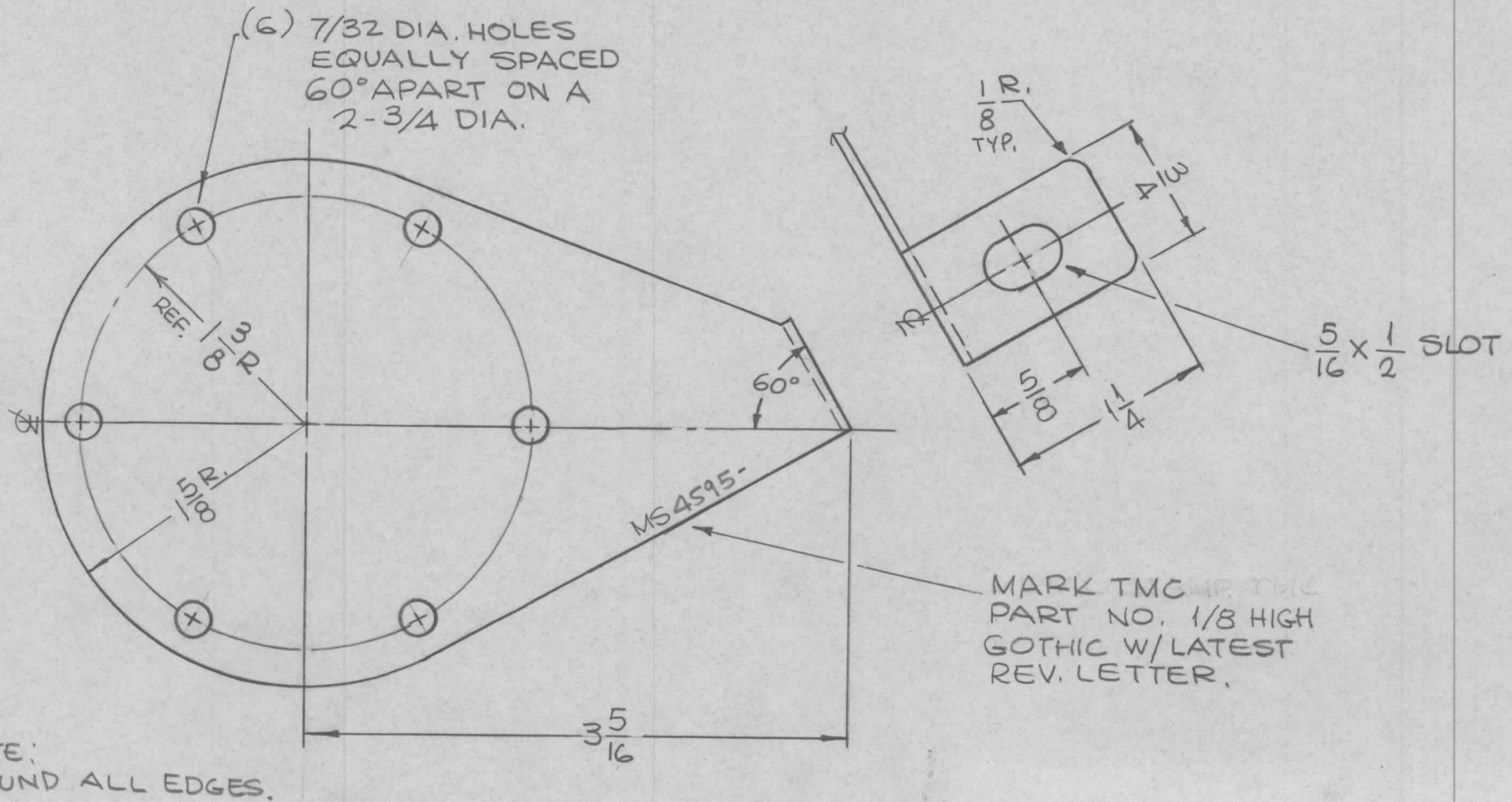
UNLESS OTHERWISE SPECIFIED:

1. USE MATERIAL THICKNESS FOR MAXIMUM RADIUS ON ALL BENDS
2. ALL ANGULAR BENDS 90 DEGREES
3. REMOVE ALL BURRS AND SHARP EDGES

REF.: LD1940

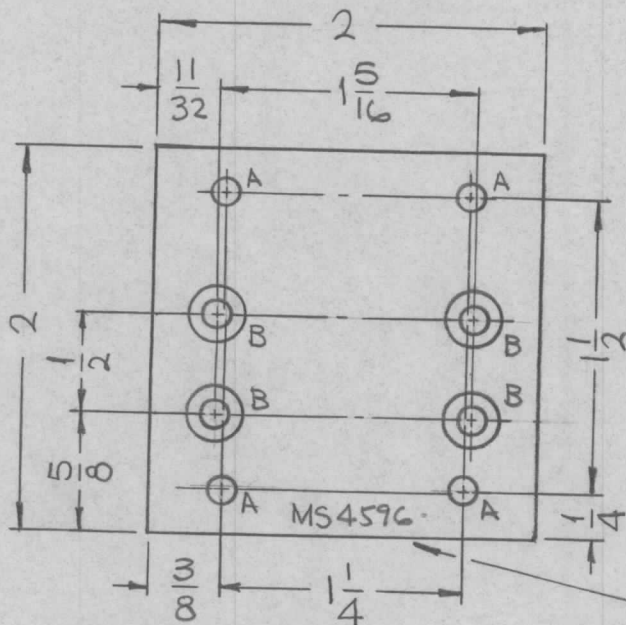
SYM	DESCRIPTION	DATE	CH. NO.	DRAFTS	CHECKER	ENG. APP.	REQ. ITEM	PART NO.	F. BUDETTI DESCRIPTION	SYMBOL		
							.051 THICK		THE TECHNICAL MATERIEL CORP. MAMARONECK, NEW YORK			
							STOCK SIZE					
\emptyset	ORIGINAL RELEASE	2/15/66					COPPER		BRACKET, CONNECTING			
							MATERIAL					
UNLESS OTHERWISE SPECIFIED DIMENSIONS ARE IN INCHES AND INCLUDE CHEMICALLY APPLIED OR PLATED FINISHES		SCALE					HOT ROLLED					
DECIMALS .X \pm .05 .XX \pm .01 .XXX \pm .005	TOLERANCES	FRACTIONS \pm 1/64 ANGLES \pm 0° 30'	CODE A					TYPE & TEMPER S245 SILVER PLATE S423 IRIDITE 18-P SILVER KOTE	HEAT TREAT. SPEC.	DRAWN	CHECKED	FINAL APPROVAL
							FINISH & SPEC. NO.		ELEC. DES. APP.	MECH. DES. APP.	MS4594 \emptyset	

REQ. PER UNIT	USED ON			MS4595 \emptyset
	MODEL	ASS'Y. NO.	DATE	
1	TSTE-10K		5-24-65	



SYM	DESCRIPTION	DATE	CH. NO.	DRAFTS	CHECKER	ENG. APP.	REQ. ITEM	PART NO.	F. BUDETTI DESCRIPTION	SYMBOL	
							.051 THICK		THE TECHNICAL MATERIEL CORP. MAMARONECK, NEW YORK		
							STOCK SIZE				
\emptyset	ORIGINAL RELEASE	2/5/66					COPPER		BRACKET, CONNECTING		
							MATERIAL				
							HOT ROLLED		SRG		
							TYPE & TEMPER	HEAT TREAT. SPEC.	DRAWN	CHECKED	FINAL APPROVAL
							S245 SILVER PLATE				
							S423 IRIDITE 18-P SILVER KOTE				
							FINISH & SPEC. NO.		ELEC. DES. APP.	MECH. DES. APP.	
											MS4595 \emptyset

REQ. PER UNIT	
1	TST C



HOLES:
 A ~ 9/64 DIA. (4 REQ.)
 B ~ DRILL .144 DIA. C'SINK 82° TO

MARK TMC PART NO. P/NO.
 1/8 HIGH GOTHIC W/LATEST
 REV. LETTER.

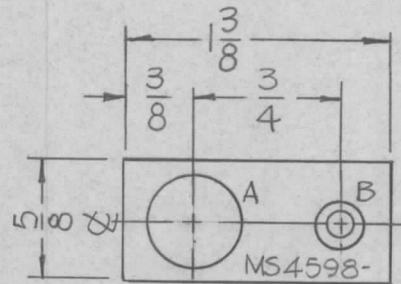
							REQ. ITEM	PART NO.	F. BUDETTI	DESCRIPTION	SYMBOL	
							1/8 THICK		THE TECHNICAL MATERIEL CORP. MAMARONECK, NEW YORK			
							STOCK SIZE		PLATE, MTG. RELAY			
Ø	ORIGINAL RELEASE	2/15/66				File	ALUMINUM					
SYM	DESCRIPTION	DATE	CH. NO.	DRAFTS	CHECKER	ENG. APP.	MATERIAL					
UNLESS OTHERWISE SPECIFIED DIMENSIONS ARE IN INCHES AND INCLUDE CHEMICALLY APPLIED OR PLATED FINISHES		SCALE	1:1					5052-H32	SRG	RCB	1/15/66	
DECIMALS .X ± .05 .XX ± .01 .XXX ± .005	TOLERANCES	FRACTIONS ± 1/64 ANGLES ± 0° 30'	CODE	A				TYPE & TEMPER	HEAT TREAT. SPEC.	DRAWN	CHECKED	FINAL APPROVAL
								S404 YEL. IRIDITE				
								FINISH & SPEC. NO.	ELEC. DES. APP.	MECH. DES. APP.	MS4596 Ø	

REQ. PER UNIT	USED ON			MS4598	Ø
	MODEL	ASS'Y. NO.	DATE		
4	TST () 10K		5-25-65		

HOLES.

A ~ 15/32 DIA. (1REQ.)

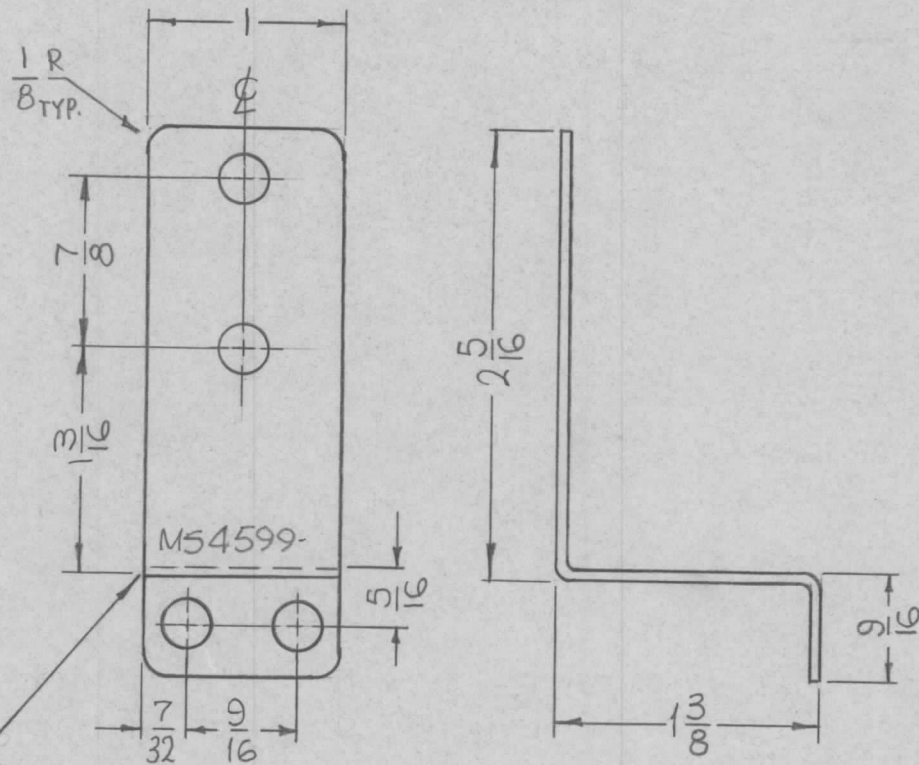
B ~ DRILL .120 DIA. C'SINK 82° TO .230 DIA. (1REQ.)



MARK TMC PART NO.
1/8 HIGH GOTHIC W/LATEST
REV. LETTER,

REQ.	ITEM	PART NO.					F. BUDETTI DESCRIPTION			SYMBOL	
Ø		.064 THICK					THE TECHNICAL MATERIEL CORP.				
		STOCK SIZE					MAMARONECK. NEW YORK				
X1	REQ. PER UNIT WAS 1	6-3-65	X1	G.D.L	CA	ALUMINUM	PLATE, MTG. TERMINAL				
SYM	DESCRIPTION	DATE	CH. NO.	DRAFTS	CHECKER	ENG. APP.	MATERIAL				
UNLESS OTHERWISE SPECIFIED DIMENSIONS ARE IN INCHES AND INCLUDE CHEMICALLY APPLIED OR PLATED FINISHES		SCALE					5052-H32				
		1:1					TYPE & TEMPER	HEAT TREAT. SPEC.	DRAWN	CHECKED	FINAL APPROVAL
DECIMALS .X ± .05 .XX ± .01 .XXX ± .005	TOLERANCES	FRACTIONS ± 1/64 ANGLES ± 0° 30'	CODE A					S404 YEL. IRIDITE			
								FINISH & SPEC. NO.	ELEC. DES. APP.	MECH. DES. APP.	MS4598 Ø

REQ. PER UNIT	USED ON			MS4599	Ø
	MODEL	ASS'Y. NO.	DATE		
1	TSTE-10K		5-25-65		



HOLES:
1/4 DIA. (4 REQ.)

- UNLESS OTHERWISE SPECIFIED:
1. USE MATERIAL THICKNESS FOR MAXIMUM RADIUS ON ALL BENDS
 2. ALL ANGULAR BENDS 90 DEGREES
 3. REMOVE ALL BURRS AND SHARP EDGES

MARK
TMC PART NO.
1/8 HIGH GOTHIC
W/LATEST REV.
LETTER.

						REQ. ITEM	PART NO.	F. BUDETTI	DESCRIPTION	SYMBOL	
						.051 THICK		THE TECHNICAL MATERIEL CORP.			
						STOCK SIZE		MAMARONECK, NEW YORK			
						COPPER		STRAP, CONNECTING			
Ø	ORIGINAL RELEASE FOR PRODUCTION	2-16-66	MA	Jc		MATERIAL					
SYM	DESCRIPTION	DATE	CH. NO.	DRAFTS	CHECKER	ENG. APP.					
UNLESS OTHERWISE SPECIFIED DIMENSIONS ARE IN INCHES AND INCLUDE CHEMICALLY APPLIED OR PLATED FINISHES		SCALE									
		1:1									
DECIMALS	TOLERANCES	FRACTIONS	CODE								
.X ± .05		± 1/64	A								
.XX ± .01		ANGLES									
.XXX ± .005		± 0° 30'									
		HOT ROLLED		TYPE & TEMPER		HEAT TREAT. SPEC.		DRAWN		CHECKED	FINAL APPROVAL
		S245 SILVER PLATE						SAB		JCB	1/16/66
		S423 IRIDITE 18P SILVER-KOTE									
		FINISH & SPEC. NO.									
								ELEC. DES. APP.		MECH. DES. APP.	MS4599