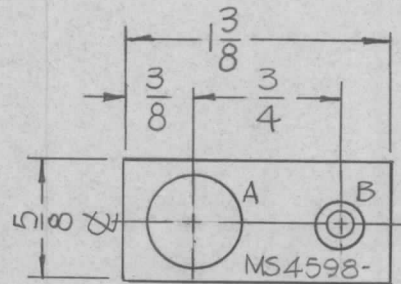


| | | | | | |
|---------------|-------------|------------|---------|--------|---|
| REQ. PER UNIT | USED ON | | | MS4598 | Ø |
| | MODEL | ASS'Y. NO. | DATE | | |
| 4 | TST () 10K | | 5-25-65 | | |

HOLES.

A ~ 15/32 DIA. (1REQ.)

B ~ DRILL .120 DIA. C'SINK 82° TO .230 DIA. (1REQ.)



MARK TMC PART NO.
1/8 HIGH GOTHIC W/LATEST
REV. LETTER,

| REQ. | ITEM | PART NO. | | | | | F. BUDETTI DESCRIPTION | | | SYMBOL | |
|---|---------------------|---|-----------|--------|---------|-----------|------------------------------|--------------------|-----------------|-----------------|----------------|
| Ø | | .064 THICK | | | | | THE TECHNICAL MATERIEL CORP. | | | | |
| | | STOCK SIZE | | | | | MAMARONECK. NEW YORK | | | | |
| X1 | REQ. PER UNIT WAS 1 | 6-3-65 | X1 | G.D.L | CA | ALUMINUM | PLATE, MTG. TERMINAL | | | | |
| SYM | DESCRIPTION | DATE | CH. NO. | DRAFTS | CHECKER | ENG. APP. | MATERIAL | | | | |
| UNLESS OTHERWISE SPECIFIED DIMENSIONS ARE IN INCHES AND INCLUDE CHEMICALLY APPLIED OR PLATED FINISHES | | SCALE | | | | | 5052-H32 | | | | |
| | | 1:1 | | | | | TYPE & TEMPER | HEAT TREAT. SPEC. | DRAWN | CHECKED | FINAL APPROVAL |
| DECIMALS .X ± .05 .XX ± .01 .XXX ± .005 | TOLERANCES | FRACTIONS ± 1/64 ANGLES ± 0° 30' | CODE A | | | | | S404 YEL. IRIDITE | | | |
| | | | | | | | | FINISH & SPEC. NO. | ELEC. DES. APP. | MECH. DES. APP. | MS4598 Ø |