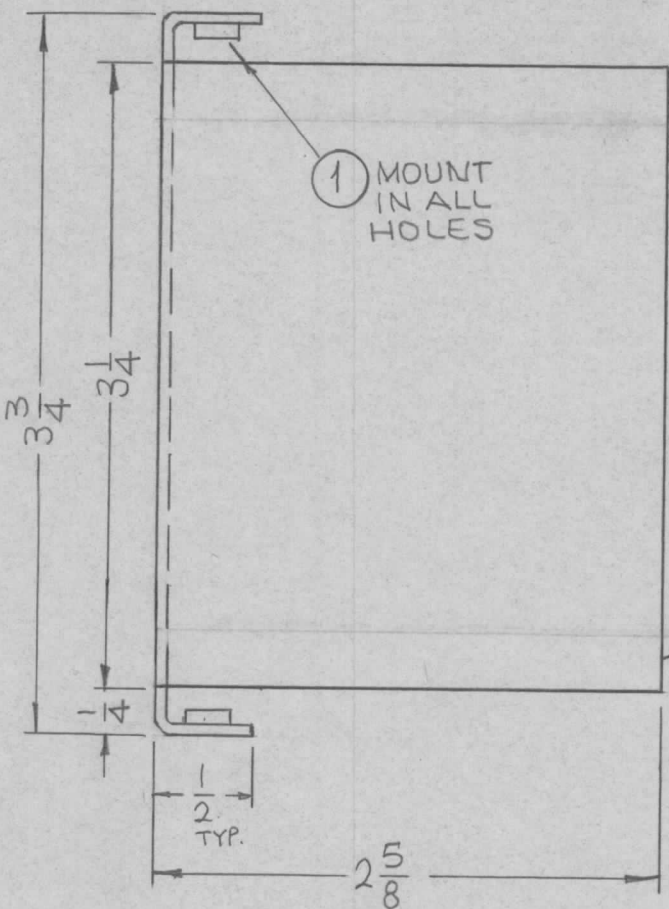
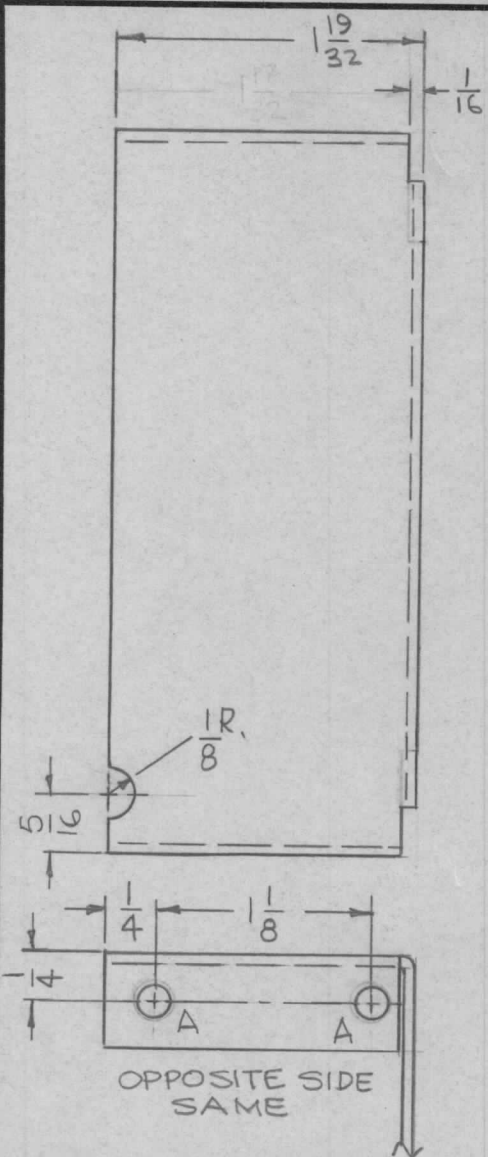


| | | | | |
|---------------|---------|------------|---------|----------|
| REQ. PER UNIT | USED ON | | | MS4586 ∅ |
| | MODEL | ASS'Y. NO. | DATE | |
| 1 | TST-10K | | 6-29-65 | |



HOLES:
A- .161 -.164 DIA. (4 REQ.)

UNLESS OTHERWISE SPECIFIED:

1. USE MATERIAL THICKNESS FOR MAXIMUM RADIUS ON ALL BENDS
2. ALL ANGULAR BENDS 90 DEGREES
3. REMOVE ALL BURRS AND SHARP EDGES
4. MOUNT INSERTS AFTER FINISHING

MARK TMC PART NO. (MS4586-) 1/8 HIGH GOTHIC W/LATEST REV. LETTER ON REAR.

FRONT VIEW

REF. LD1955

| | | | | | |
|--------------------|----------|-------------------|------------------------------|-----------------|----------------|
| 4 | 1 | NT129-440-3 | NUT, PLAIN, SPLINE | | |
| REQ. ITEM | PART NO. | | F. BUDETTI DESCRIPTION | | SYMBOL |
| .051 THICK | | | THE TECHNICAL MATERIEL CORP. | | |
| STOCK SIZE | | | MAMARONECK, NEW YORK | | |
| ALUMINUM | | | SHI SHIELD, RF | | |
| MATERIAL | | | | | |
| 5052-H32 | | | | | |
| TYPE & TEMPER | | HEAT TREAT. SPEC. | DRAWN | CHECKED | FINAL APPROVAL |
| S404 YEL TRIDITE | | | | | |
| FINISH & SPEC. NO. | | | ELEC. DES. APP. | MECH. DES. APP. | |
| | | | | | MS4586 ∅ |

| | | | | | | |
|---|---------------------------------|---|-----------|--------|---------|-----------|
| ∅ | ORIGINAL RELEASE FOR PRODUCTION | 2-16-66 | AA | Jc | | |
| X2 | COMPLETELY REVISED | 6-29-65 | X2 | MS | pb. | |
| X1 | 1/8 R. CUTOUT ADDED | 6-28-65 | X1 | MS | DS | |
| SYM | DESCRIPTION | DATE | CH. NO. | DRAFTS | CHECKER | ENG. APP. |
| UNLESS OTHERWISE SPECIFIED DIMENSIONS ARE IN INCHES AND INCLUDE CHEMICALLY APPLIED OR PLATED FINISHES | | SCALE 1:1 | | | | |
| DECIMALS .X ± .05 .XX ± .01 .XXX ± .005 | TOLERANCES | FRACTIONS ± 1/64 ANGLES ± 0° 30' | CODE A | | | |