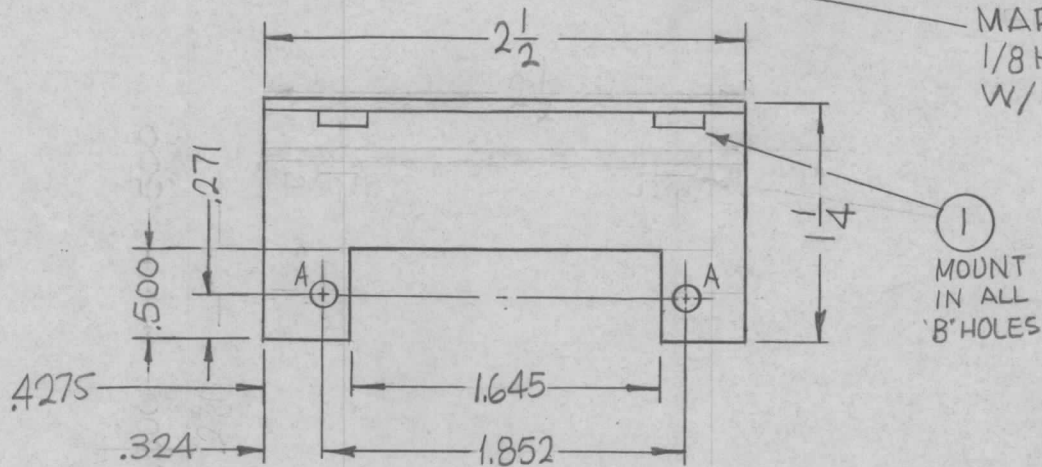
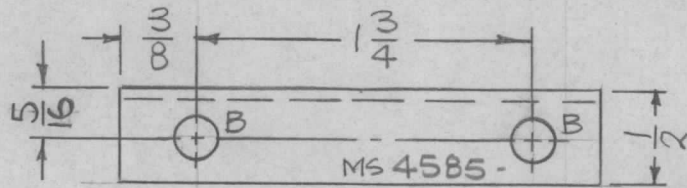


REQ. PER UNIT	USED ON			MS4585 $\emptyset$
	MODEL	ASS'Y. NO.	DATE	
1	TST ( )10K		5-5-65	



HOLES:  
 A - 1/8 DIA. (2 REQ.)  
 B - .221-.224 DIA. (2 REQ.)

UNLESS OTHERWISE SPECIFIED:

1. USE MATERIAL THICKNESS FOR MAXIMUM RADIUS ON ALL BENDS
2. ALL ANGULAR BENDS 90 DEGREES
3. REMOVE ALL BURRS AND SHARP EDGES
4. MOUNT INSERTS AFTER FINISHING

REF: LD 1923 (FOR REF ONLY)

2	1	NT129-832-4	NUT, PLAIN, SPLINE	B
REQ.	ITEM	PART NO.	F. BUDETTI DESCRIPTION	SYMBOL
		.081 THICK	THE TECHNICAL MATERIEL CORP.	
		STOCK SIZE	MAMARONECK, NEW YORK	
		ALUMINUM	BRACKET, MTG. CONNECTOR	
		MATERIAL		
		5052-H32	SRG	13/13 Han
		TYPE & TEMPER	CHECKED	FINAL APPROVAL
		HEAT TREAT. SPEC.		
		S404 YEL. IRIDITE		MS4585 $\emptyset$
		FINISH & SPEC. NO.	ELEC. DES. APP.	MECH. DES. APP.

$\emptyset$	ORIGINAL RELEASE	2/17/66				
X1	5/16 WAS 1/4	5-14-65	X1	SRG		
SYM	DESCRIPTION	DATE	CH. NO.	DRAFTS	CHECKER	ENG. APP.
UNLESS OTHERWISE SPECIFIED DIMENSIONS ARE IN INCHES AND INCLUDE CHEMICALLY APPLIED OR PLATED FINISHES		SCALE	1:1			
DECIMALS	TOLERANCES	FRACTIONS	CODE			
.X $\pm$ .05		$\pm$ 1/64	A			
.XX $\pm$ .01		ANGLES				
.XXX $\pm$ .005		$\pm$ 0° 30'				