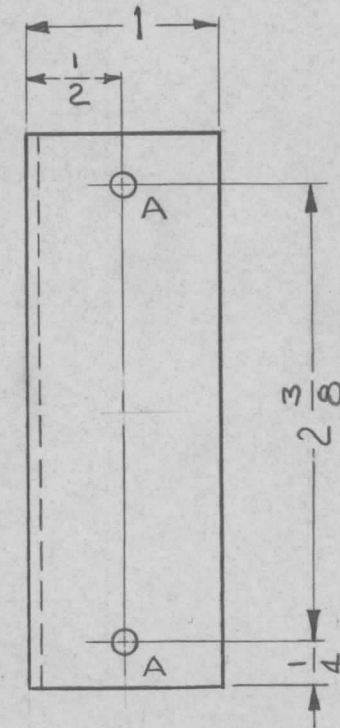
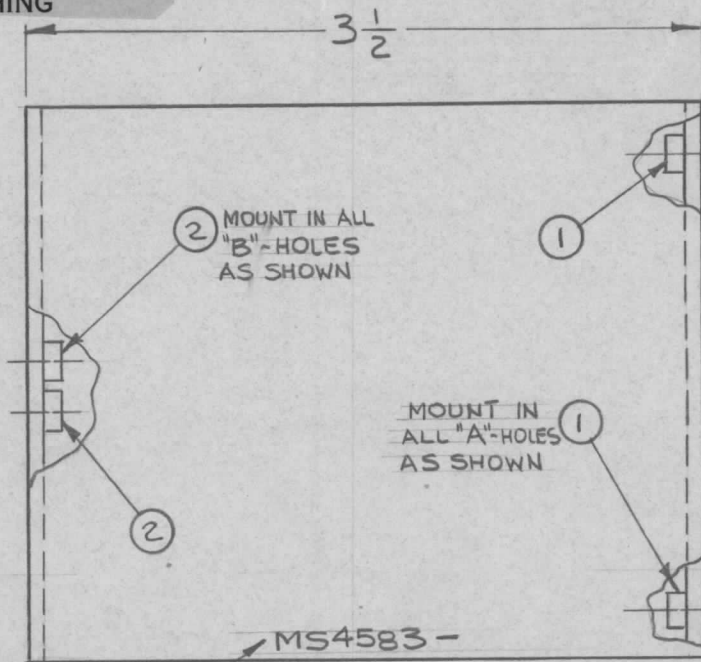
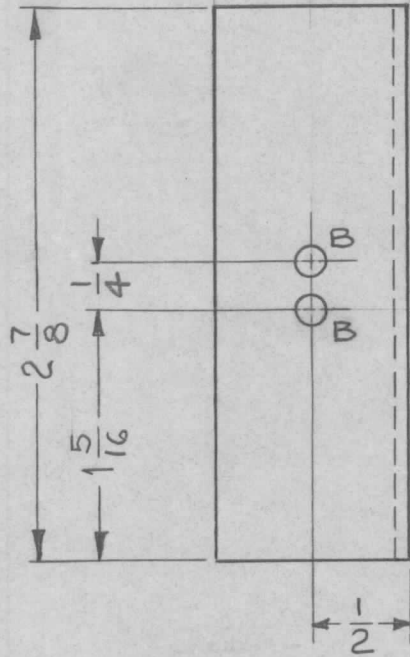


UNLESS OTHERWISE SPECIFIED:

1. USE MATERIAL THICKNESS FOR MAXIMUM RADIUS ON ALL BENDS
2. ALL ANGULAR BENDS 90 DEGREES
3. REMOVE ALL BURRS AND SHARP EDGES
4. MOUNT INSERTS AFTER FINISHING

REQ. PER UNIT	USED ON	
	MODEL	ASS'Y. NO. DATE
1	GPT 10K	5.7.1965
4	GPT 40K	5.7.1965

MS4583  $\emptyset$



MARK TMC PART NO. 1/8 HIGH GOTHIC, WITH LATEST REV. LETTER

HOLES	REQ
A - .191 - .194 DIA	2
B - .221 - .224 DIA	2

REQ.	ITEM	PART NO.	F. BUDETTI DESCRIPTION	SYMBOL
2	2	NT129-832-4	NUT, PLAIN, SPLINE	B
2	1	NT129-632-4	NUT, PLAIN, SPLINE	A

SYM	DESCRIPTION	DATE	CH. NO.	DRAFTS	CHECKER	ENG. APP.
$\emptyset$	ORIGINAL RELEASE	2/15/66				<i>HQ</i>
UNLESS OTHERWISE SPECIFIED DIMENSIONS ARE IN INCHES AND INCLUDE CHEMICALLY APPLIED OR PLATED FINISHES		SCALE	1:1			
DECIMALS	TOLERANCES	FRACTIONS	CODE			
.X $\pm$ .05		$\pm$ 1/64	A			
.XX $\pm$ .01		ANGLES				
.XXX $\pm$ .005		$\pm$ 0° 30'				

REQ.	ITEM	PART NO.	F. BUDETTI DESCRIPTION	SYMBOL
.081 THK STOCK SIZE			THE TECHNICAL MATERIEL CORP. MAMARONECK, NEW YORK	
ALUMINUM MATERIAL			BRACKET, MTG., COVER	
5052-H32		HEAT TREAT. SPEC.	DRAWN <i>Job</i>	CHECKED <i>CB</i>
S404 YEL. IRIDITE		FINISH & SPEC. NO.	ELEC. DES. APP.	MECH. DES. APP. <i>MS4583</i>