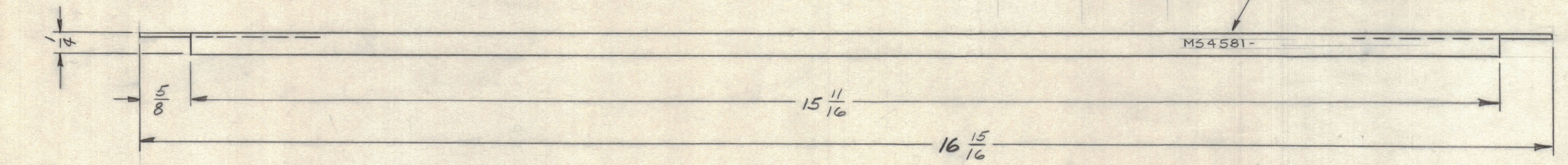
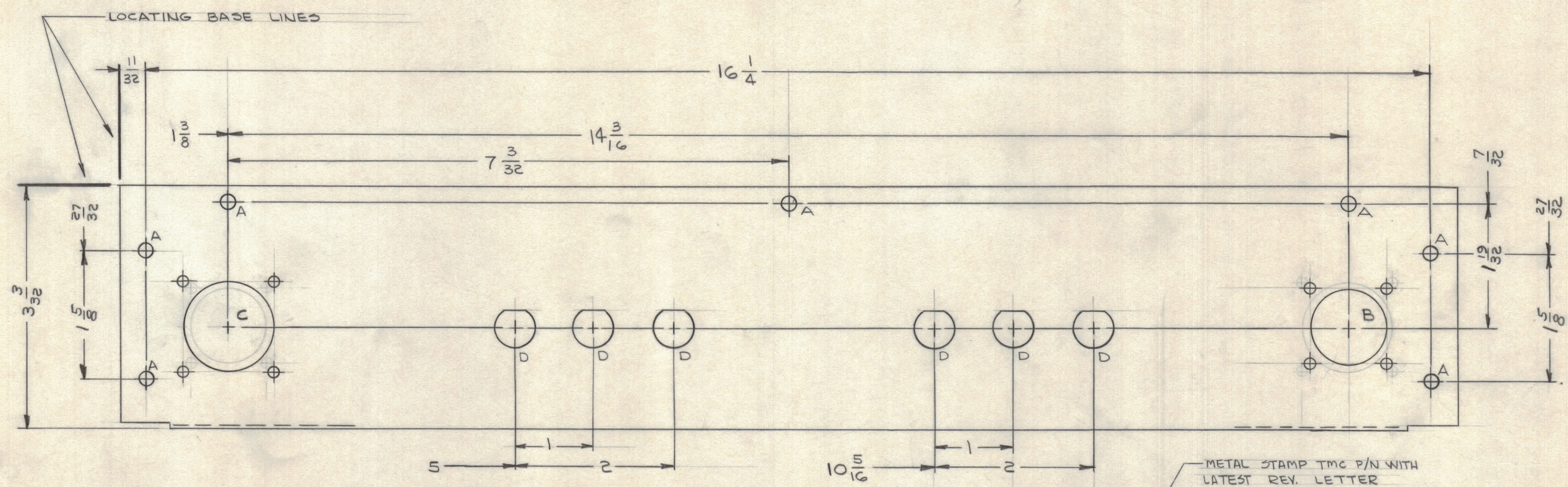
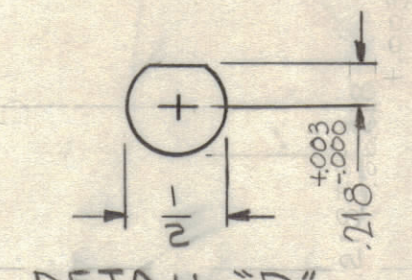
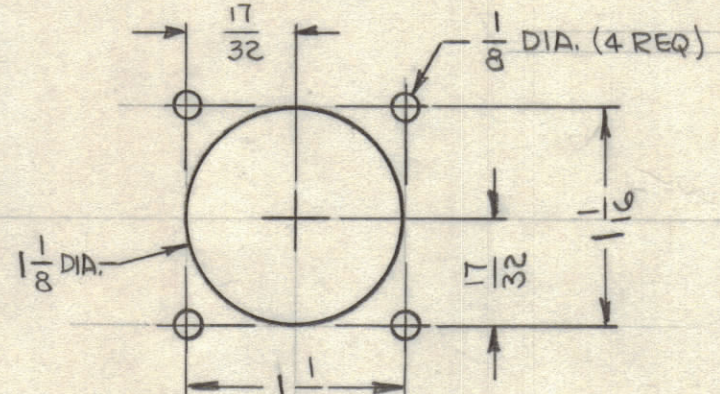
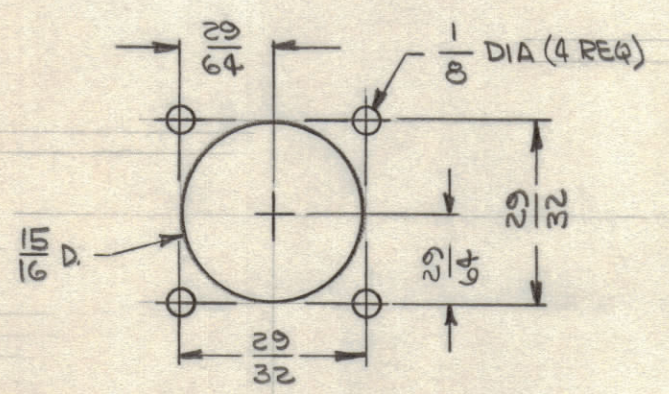


REVISIONS							
ZONE	SYM	DESCRIPTION	DATE	E.M.N. NO.	DRAFT	CHKD	APPD
XI		"C" & "B" DETAIL REVERSED ON PICTORIAL	5-11-65	XI		J.M. W.	
Ø		ORIGINAL RELEASE FOR PRODUCTION	5/18/65			J.M. W.	
A		ON DETAIL "D" RELOCATED DIM. 218	5/19/65	14562		J.P. W.	



HOLE	DESCRIPTION	REQ.
A	11/64 DIA	7
B	SEE DETAIL	1
C	SEE DETAIL	1
D	SEE DETAIL	6



- UNLESS OTHERWISE SPECIFIED:
- USE MATERIAL THICKNESS FOR MAXIMUM RADIUS ON ALL BENDS
  - ALL ANGULAR BENDS 90 DEGREES
  - REMOVE ALL BURRS AND SHARP EDGES
  - MOUNT INSERTS AFTER FINISHING

NOTES

Q'TY/UNIT	MODEL USED ON	ASS'Y. NO.
1	RGCB-1	
SCALE	CODE	
1:1	A	

REF: LD1898

REQ'D.	ITEM	PART NUMBER	DESCRIPTION	SYMBOL
F. EATON LIST OF MATERIAL				
MATERIAL		THE TECHNICAL MATERIEL CORP.		
.062 ALUMINUM		MAMARONECK, NEW YORK		
5052-H32		TITLE		
FINISH		PLATE, REAR		
S404 YEL IRIDITE		DRAWN		
UNLESS OTHERWISE SPECIFIED		DATE		
DIMENSIONS ARE IN INCHES AND INCLUDE		5-7-65		
CHEMICALLY APPLIED OR PLATED FINISHES		CHECKED		
DECIMALS		DATE		
.X ± .05		5/17/65		
.XX ± .01		ELECT. DES.		
.XXX ± .005		DATE		
TOLERANCES		1-7-65		
± 1/64		MECH. DES.		
ANGLES		DATE		
± 0° 30'		5/19/65		
REPRODUCTION IN WHOLE OR IN PART IS STRICTLY FORBIDDEN.		SHEET		
		MS4581		
		REV. LTR.		
		A		

MS4581 A