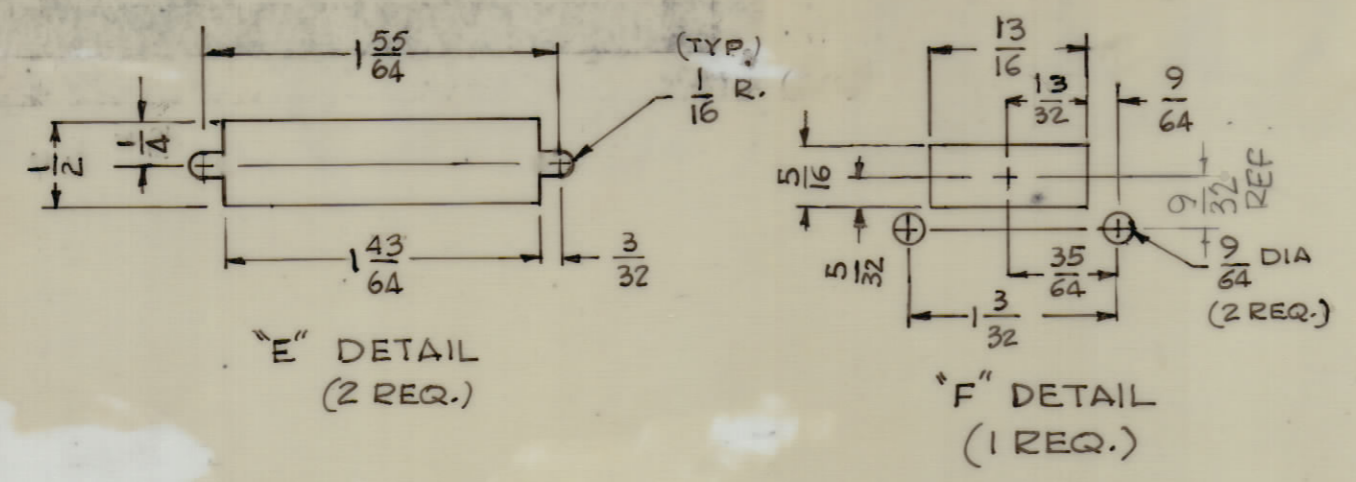
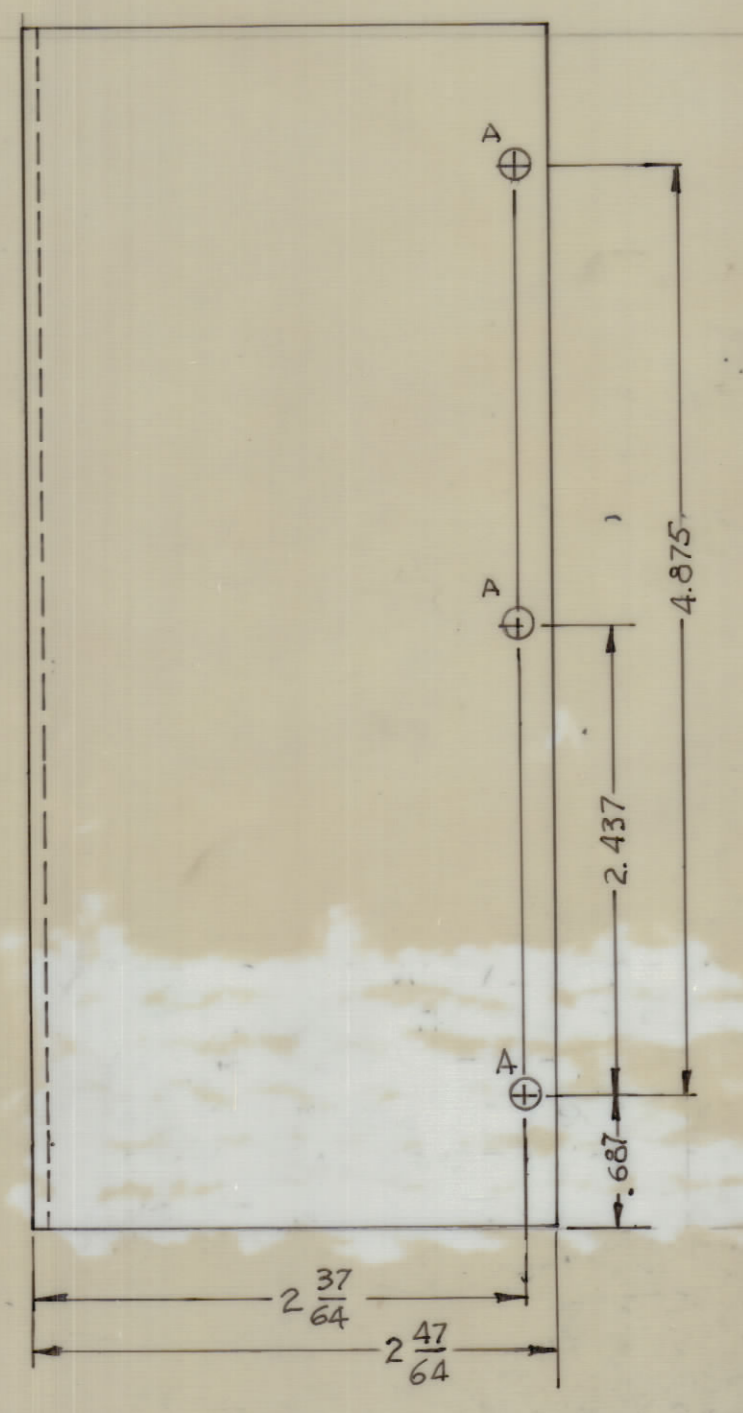
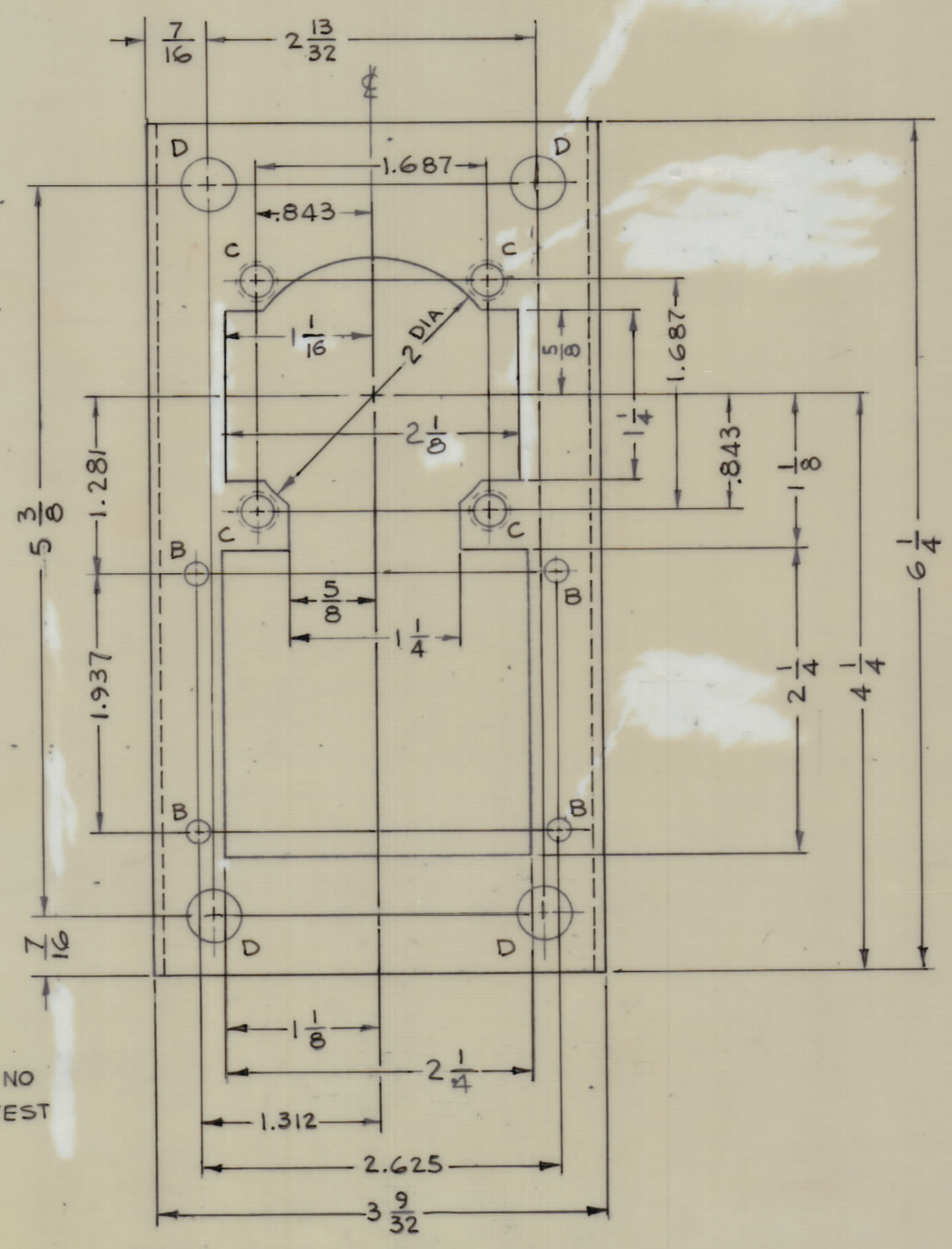
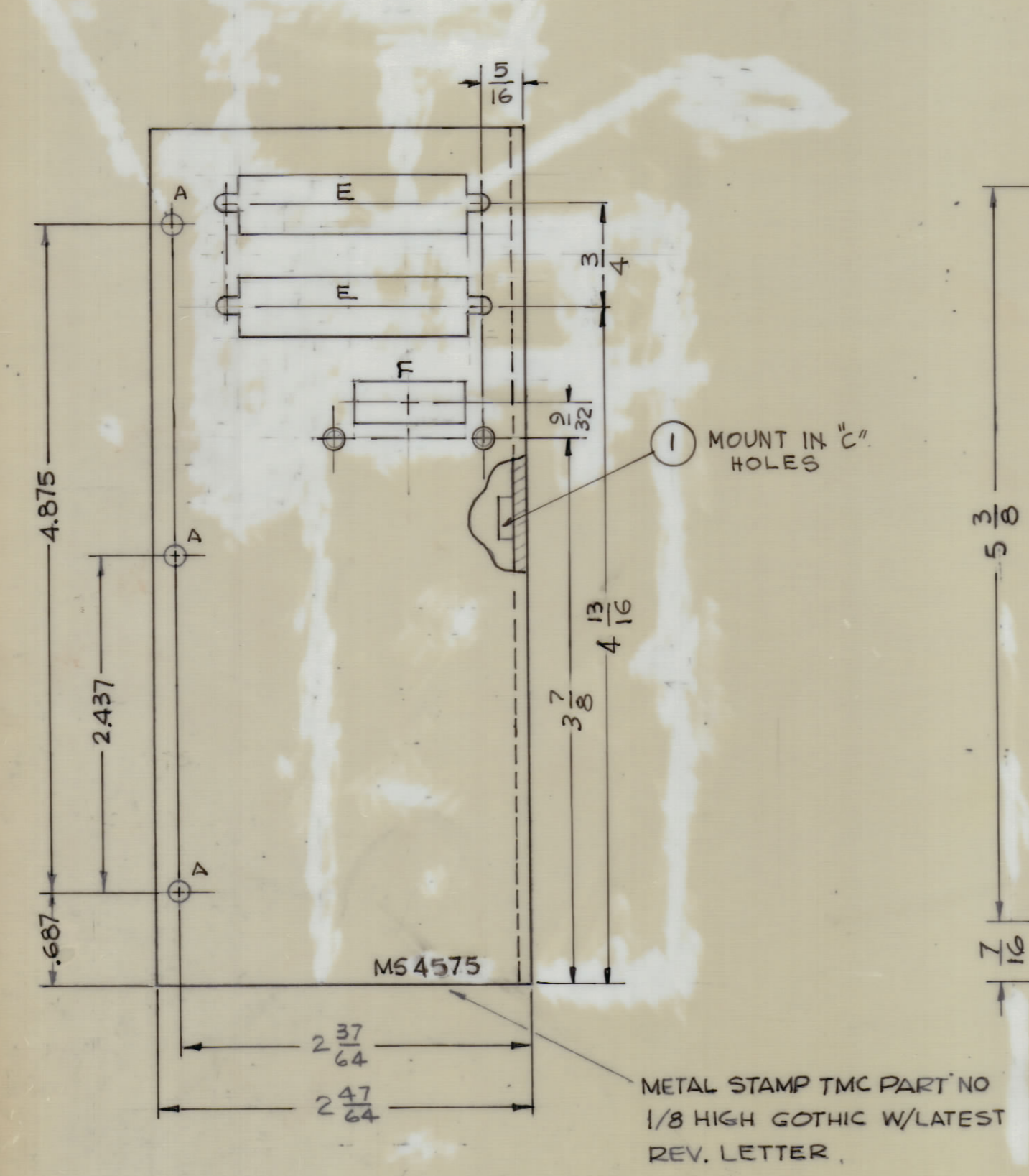


H
G
F
E
D
C
B
A



HOLE	DESCRIPTION	REQ
A	.144 DIA.	6
B	5/32 DIA	4
C	.221 - .224 DIA	4
D	3/8 DIA.	4
E	SEE DETAIL	2
F	SEE DETAIL	1

REVISIONS						
ZONE	SYM	DESCRIPTION	DATE	E.M.N. NO.	DRAFT	CHKD
		ORIGINAL RELEASE FOR PRODUCTION	5/6/65	-A-	GDL	



MS4575

- UNLESS OTHERWISE SPECIFIED:
1. USE MATERIAL THICKNESS FOR MAXIMUM RADIUS ON ALL BENDS
 2. ALL ANGULAR BENDS 90 DEGREES
 3. REMOVE ALL BURRS AND SHARP EDGES
 4. MOUNT INSERTS AFTER FINISHING

REF: LD1894

REQ'D.	ITEM	PART NUMBER	DESCRIPTION	SYMBOL
4	1	NT-129-832-4	NUT, PLAIN SPLINE	C

LIST OF MATERIAL	
MATERIAL .081 ALUMINUM 5052-H32	THE TECHNICAL MATERIEL CORP. MAMARONECK, NEW YORK
FINISH 3404 YELLOW IRIDITE	TITLE BRACKET, MOUNTING

QTY/UNIT	MODEL USED ON	ASSY. NO.
1	HFSA-1	

SCALE	CODE
1:1	A

DECIMALS	FRACTIONS
.X ± .05	± 1/64
.XX ± .01	ANGLES
.XXX ± .005	± 0° 30'

DRAWN	DATE	FINAL APPROVAL	DATE
G.D.L.	5-5-65	J.E. Eaton	5/7/65

CHECKED	DATE	ELECT. DES.	DATE
J.P.B.	5/6/65		

MECH. DES.	DATE	SHEET	REV. LTR.
B. Barnes	5/7/65		

UNLESS OTHERWISE SPECIFIED DIMENSIONS ARE IN INCHES AND INCLUDE CHEMICALLY APPLIED OR PLATED FINISHES

NOTES