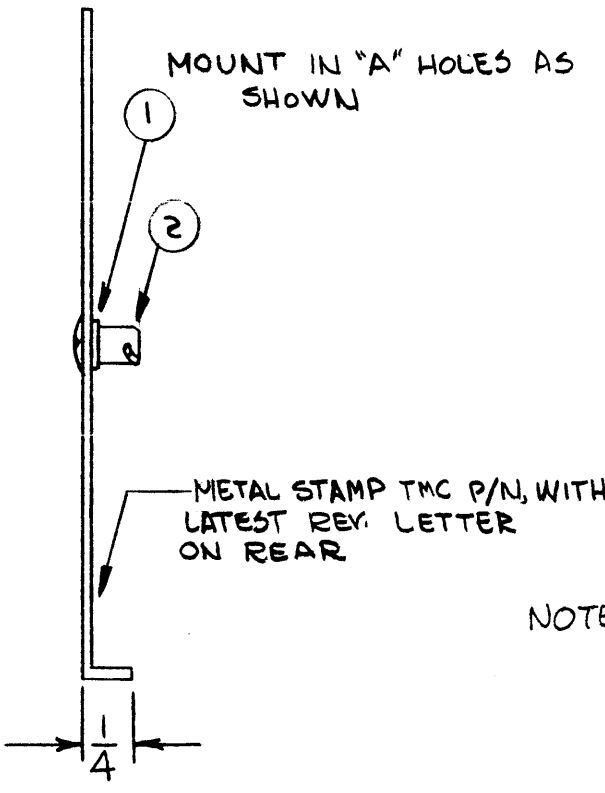
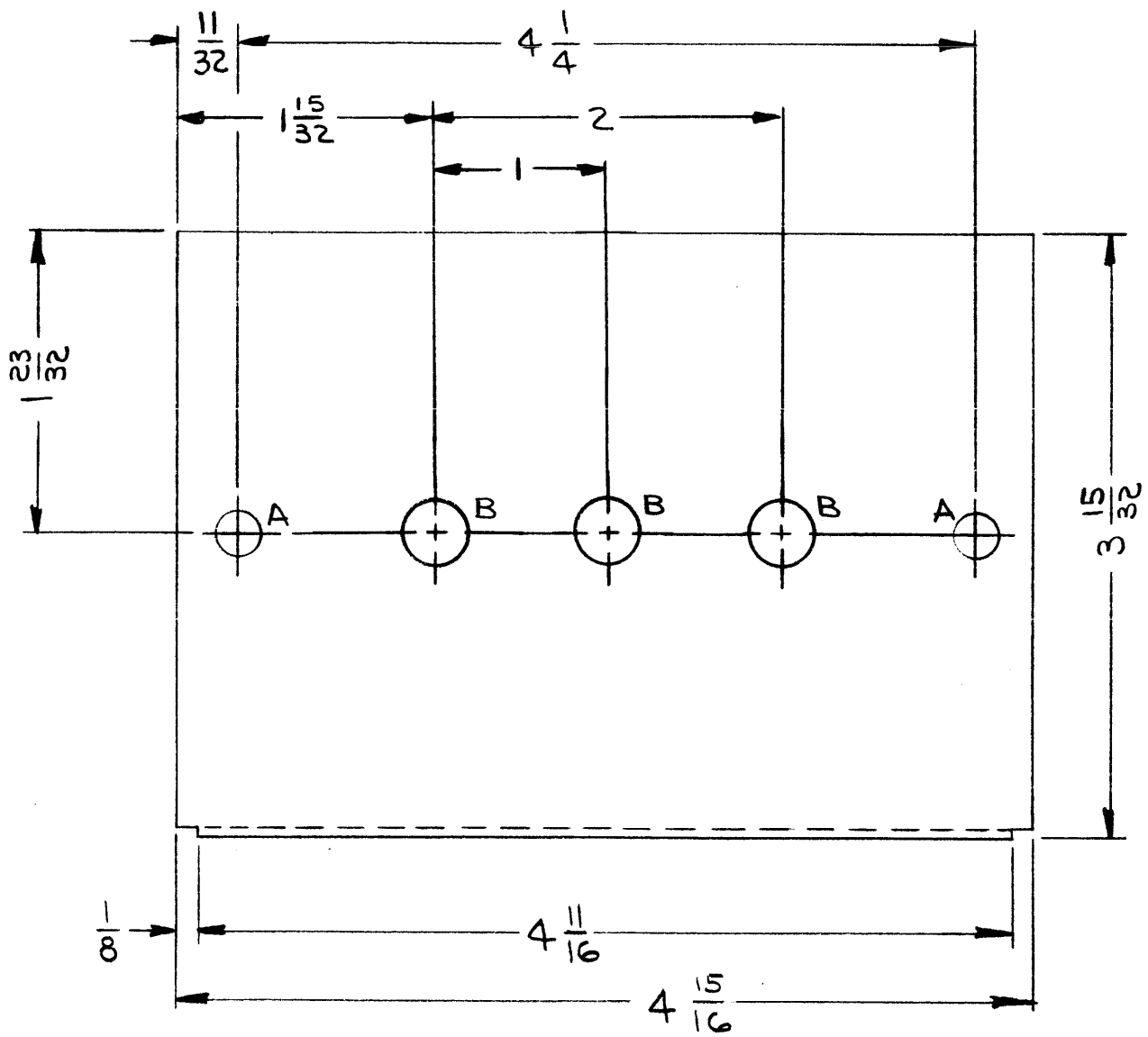


SYM	DESCRIPTION	REVISIONS				
		DATE	E.M.N. NO.	DRAFT	CHKD	APPD
X1	ADDED "B" HOLES	5/12/65		JL	J.M.	W.S.
Ø	ORIGINAL RELEASE FOR PRODUCTION	5/18/65	<del>11</del>	JL	J.M.	

MS4566



HOLE	DESCRIPTION	REQ.
A	1/4 DIA	2
B	3/8 DIA	3

NOTE - ITEMS 1 & 2 TO BE SUPPLIED AND ASSEMBLED BY TMC.

UNLESS OTHERWISE SPECIFIED:

1. USE MATERIAL THICKNESS FOR MAXIMUM RADIUS ON ALL BENDS
2. ALL ANGULAR BENDS 90 DEGREES
3. REMOVE ALL BURRS AND SHARP EDGES
4. MOUNT INSERTS AFTER FINISHING

**NOTES**

2	RGCA-1	
Q'TY./UNIT	MODEL USED ON	ASS'Y. NO.
SCALE 1:1	CODE A	

THE CONTENTS OF THIS DRAWING ARE THE EXCLUSIVE PROPERTY OF THE TECHNICAL MATERIEL CORP. ITS UNAUTHORIZED USE OR REPRODUCTION IN WHOLE OR IN PART IS STRICTLY FORBIDDEN.

2	2	F3110-1	STUD, TURNLOCK	A
2	1	F3109-1	RETAINING RING, STUD	A
REQ'D.	ITEM	PART NUMBER	DESCRIPTION	SYMBOL

**F. EATON LIST OF MATERIAL**

MATERIAL .062, ALUMINUM 5052-H32  
 FINISH S404 YEL. IRIDITE  
 TITLE COVER, TOP & BOTTOM

UNLESS OTHERWISE SPECIFIED DIMENSIONS ARE IN INCHES AND INCLUDE CHEMICALLY APPLIED OR PLATED FINISHES		DRAWN <i>[Signature]</i> DATE 5-4-65 CHECKED <i>[Signature]</i> DATE 5/18/65 ELECT. DES. <i>[Signature]</i> DATE 5-17-65 MECH. DES. W. JORDAN DATE 5/14/65	FINAL APPROVAL <i>[Signature]</i> DATE 5/18/65 MS4566 SHEET	DATE 5/18/65 REV. LTR.
---	--	---	---	---------------------------