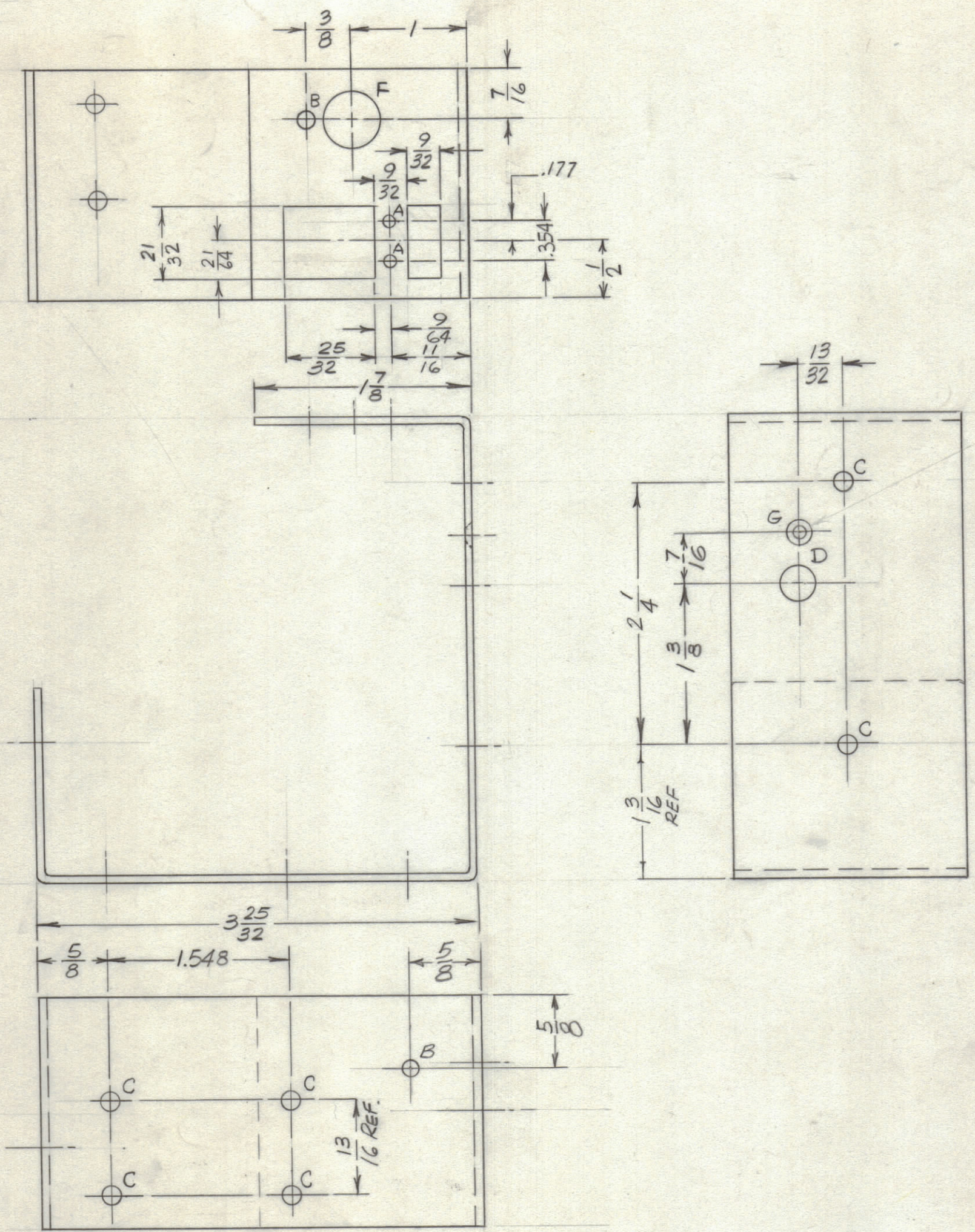
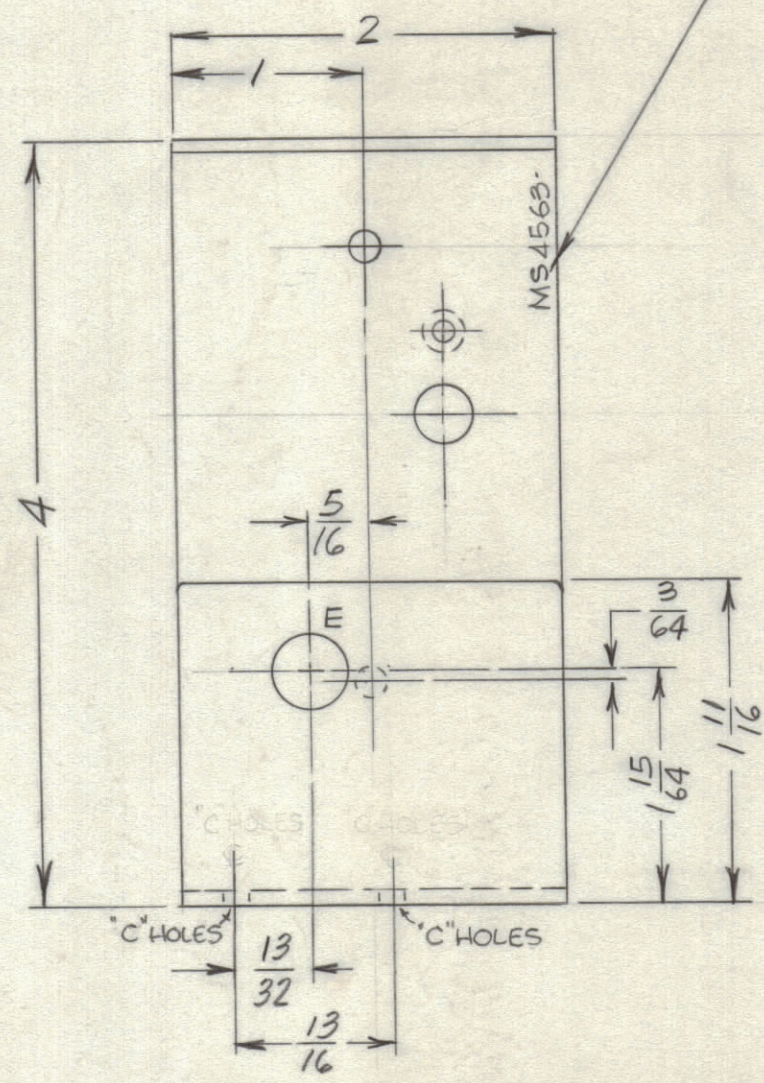


HOLE	DESCRIPTION	REQ.
A	7/64 DIA.	2
B	5/32 DIA.	2
C	11/64 DIA.	6
D	5/16 DIA.	1
E	13/32 DIA.	1
F	1/2 DIA.	1
G	.120 DIA. THRU, C'SK 82° X .230 DIA.	1

REVISIONS							
ZONE	SYM	DESCRIPTION	DATE	E.M.N. NO.	DRAFT	CHKD	APPD
	Ø	ORIGINAL RELEASE FOR PRODUCTION	5/10/65	-M-	HLA		

METAL STAMP TMC PART NO. 1/8 HIGH GOTHIC  
W/LATEST REV. LETTER



.120 DIA. & 82° C SINK  
(TO .230 DIA. #425 (JOLE))

- UNLESS OTHERWISE SPECIFIED:
1. USE MATERIAL THICKNESS FOR MAXIMUM RADIUS ON ALL BENDS
  2. ALL ANGULAR BENDS 90 DEGREES
  3. REMOVE ALL BURRS AND SHARP EDGES

REF-LD1895

REQ'D.	ITEM	PART NUMBER	DESCRIPTION	SYMBOL
ZETENA LIST OF MATERIAL				
MATERIAL		THE TECHNICAL MATERIEL CORP. MAMARONECK, NEW YORK		
.080 ALUMINUM 5052-H-32		TITLE BRACKET, MOUNTING, AUTO. SWITCH		
FINISH		DRAWN H. AUSTIN		
S404 YELLOW IRIDITE		DATE 5-3-65		
UNLESS OTHERWISE SPECIFIED DIMENSIONS ARE IN INCHES AND INCLUDE CHEMICALLY APPLIED OR PLATED FINISHES		CHECKED [Signature]		
TOLERANCES		ELECT. DES. [Signature]		
.X ± .05		DATE 5/10/65		
.XX ± .01		MECH. DES. [Signature]		
.XXX ± .005		DATE 5-10-65		
FRACTIONS ± 1/64		SHEET		
ANGLES ± 0° 30'		REV.		

Q'TY./UNIT	MODEL USED ON	ASS'Y. NO.
1	CMRA-1	
SCALE	CODE	

NOTES

THE CONTENTS OF THIS DRAWING ARE THE EXCLUSIVE PROPERTY OF THE TECHNICAL MATERIEL CORP. ITS UNAUTHORIZED USE OR REPRODUCTION IN WHOLE OR IN PART IS STRICTLY FORBIDDEN.

MS4563  
Ø