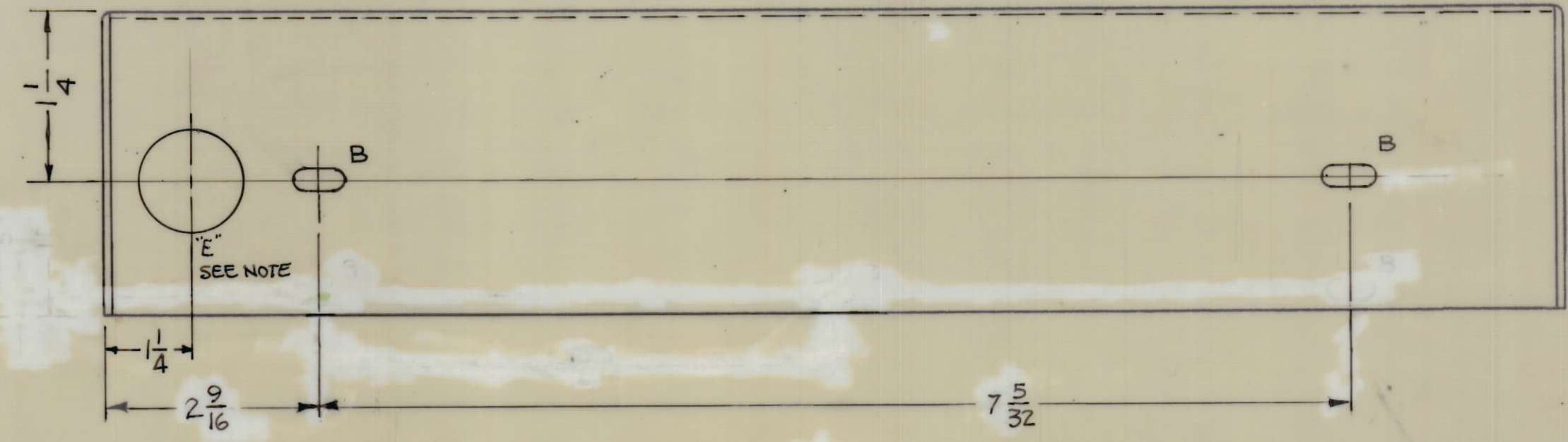
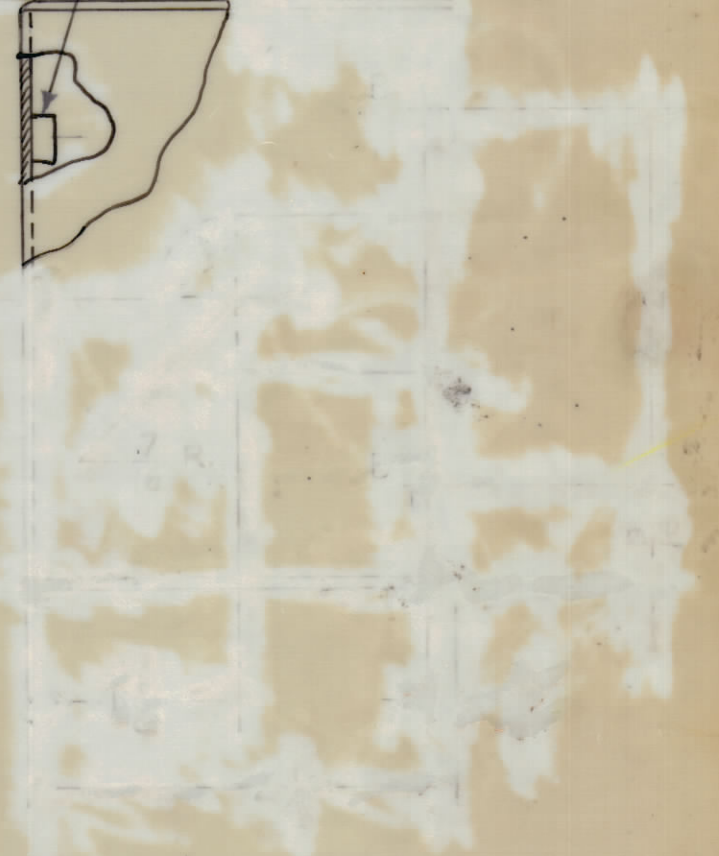
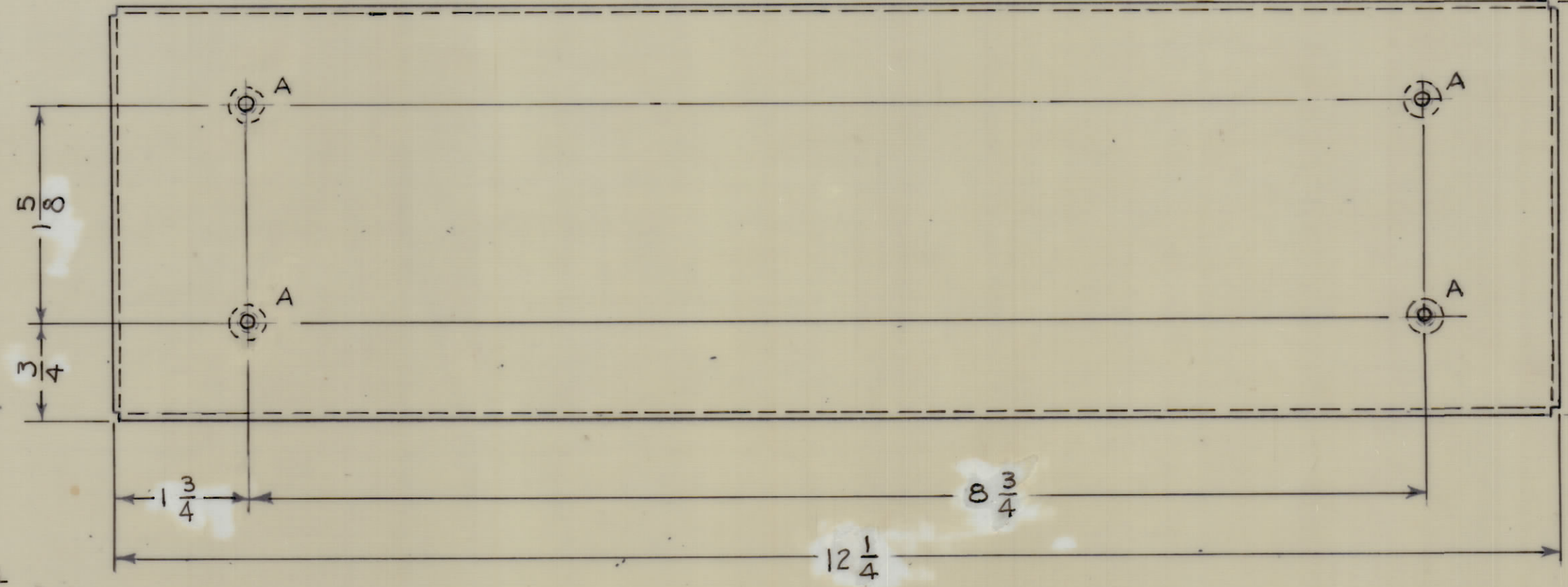
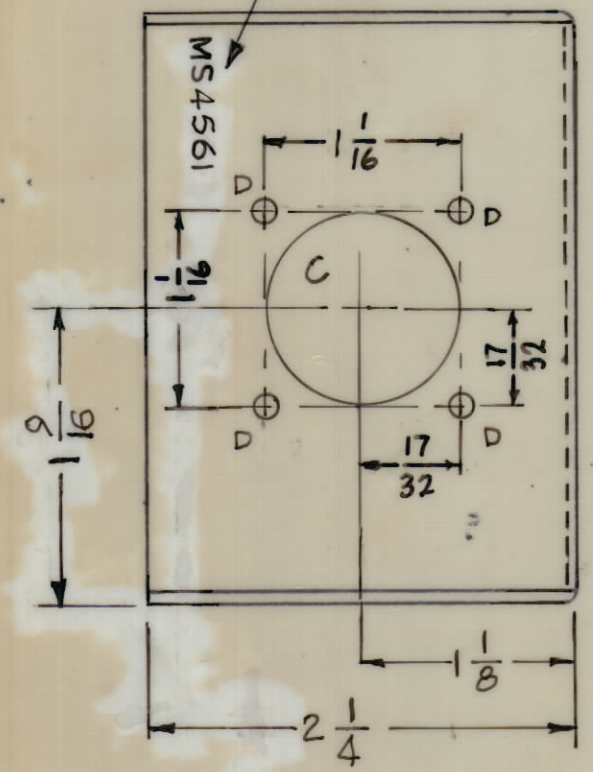


REVISIONS							
ZONE	SYM	DESCRIPTION	DATE	E.M.N. NO.	DRAFT	CHKD	APPD
	Ø	ORIGINAL RELEASE	5/12/65	Ø	GDL		
	A	E HOLE ADDED	2-2-66	15654	<i>[Signature]</i>	<i>[Signature]</i>	<i>[Signature]</i>
	B	B SLOT QTY WERE 9 REQ	1-21-69	19198	9E	<i>[Signature]</i>	<i>[Signature]</i>

METAL STAMP TMC P/N  
1/8 HIGH, GOTHIC W/LATEST  
REV. LETTER

1 MOUNT IN ALL "A" HOLES



HOLE LEGEND		
HOLE	DESCRIPTION	REQ'D
A	.191-.194 DIA	4
B	11/64 X 11/32 SLOT	4
C	1-1/16 DIA	1
D	11/64 DIA.	4
E	7/8 DIA.	1

MS4561 B

UNLESS OTHERWISE SPECIFIED:

1. USE MATERIAL THICKNESS FOR MAXIMUM RADIUS ON ALL BENDS.
2. ALL ANGULAR BENDS 90°.
3. REMOVE ALL BURRS AND SHARP EDGES.
4. MOUNT INSERTS AFTER FINISHING.

OPPOSITE SIDE IDENTICAL  
NOTE: 'E' HOLE THIS VIEW ONLY

REF.: LD1908

4	1	NT-129-632-4	NUT, ROUND, SWAGE TYPE	A
REQ'D.	ITEM	PART NUMBER	DESCRIPTION	SYMBOL
STURMER LIST OF MATERIAL				
MATERIAL .062 THK ALUMINUM 5052-H32			THE TECHNICAL MATERIEL CORP. MAMARONECK, NEW YORK	
FINISH S404 YEL IRIDITE			TITLE CHASSIS, ELECTRICAL	
DRAWN G.D.L.		DATE 5-2-65	FINAL APPROVAL <i>[Signature]</i>	
CHECKED <i>[Signature]</i>		DATE 5-12-65	DATE 5/13/65	
ELECT. DES. <i>[Signature]</i>		DATE 5-13-65	MS4561 B	
MECH. DES.		DATE	SHEET	REV. LTR.

1	RAK-55	ASS'Y. NO.
QTY./UNIT	MODEL USED ON	
SCALE DO NOT SCALE	CODE B	
THE CONTENTS OF THIS DRAWING ARE THE EXCLUSIVE PROPERTY OF THE TECHNICAL MATERIEL CORP. ITS UNAUTHORIZED USE OR REPRODUCTION IN WHOLE OR IN PART IS STRICTLY FORBIDDEN.		
DECIMALS .X ± .05 .XX ± .01 .XXX ± .005	TOLERANCES	FRACTIONS ± 1/64 ANGLES ± 0° 30'

NOTES