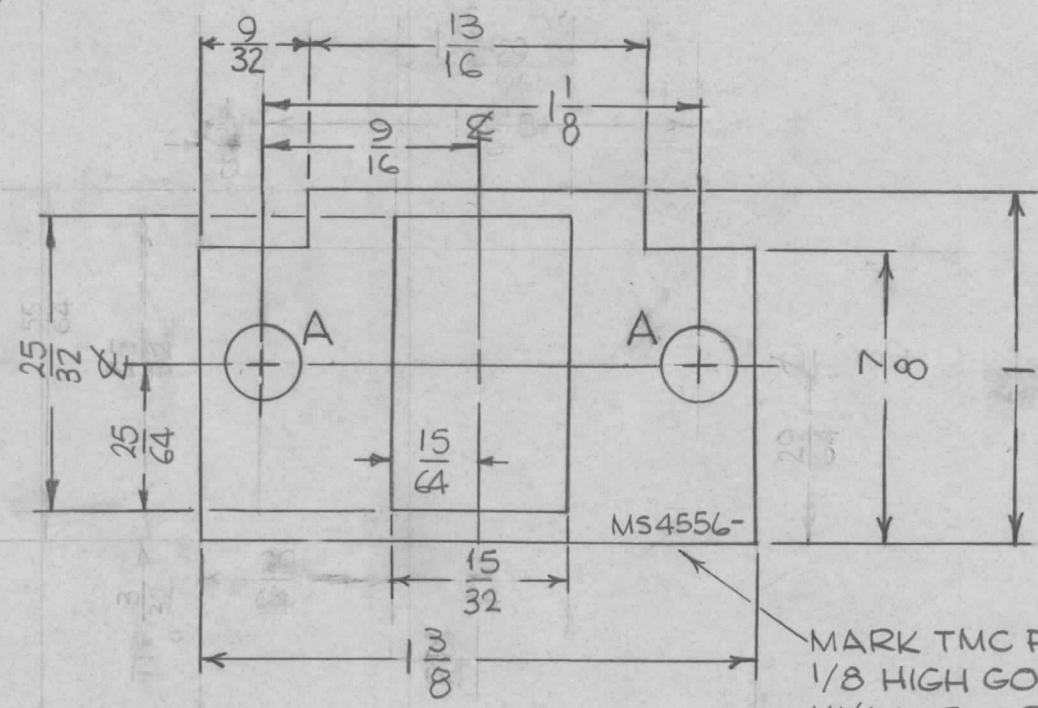


HOLES

A=11/64 DIA. (2REQ.)

REQ. PER UNIT	USED ON		MS 4556 \emptyset
	MODEL	DATE	
2	TSTE-10K	5-4-65	



MARK TMC PART NO.
1/8 HIGH GOTHIC
W/LATEST REV.
LETTER

SYM	DESCRIPTION	DATE	CH. NO.	DRAFTS	CHECKER	ENG. APP.	REQ. ITEM	PART NO.	F. BUDETTI DESCRIPTION	SYMBOL	
\emptyset	ORIGINAL RELEASE	2/15/66									
X2	MARK TMC P/N ETC. ADDED	2-9-66	-A	Jc	JCB		.081 THICK STOCK SIZE		THE TECHNICAL MATERIEL CORP. MAMARONECK, NEW YORK		
X1	13/16 WAS 25/32, 7/8 WAS 3/4	5-11-65	X1	SRG	CA	PS.	ALUMINUM		SHIM, COUNTER		
							MATERIAL				
							5052-H32		DA	JCB	
							TYPE & TEMPER	HEAT TREAT. SPEC.	DRAWN	CHECKED	FINAL APPROVAL
							S404 YEL. IRIDITE			DA	MS4556 \emptyset
							FINISH & SPEC. NO.		ELEC. DES. APP.	MECH. DES. APP.	