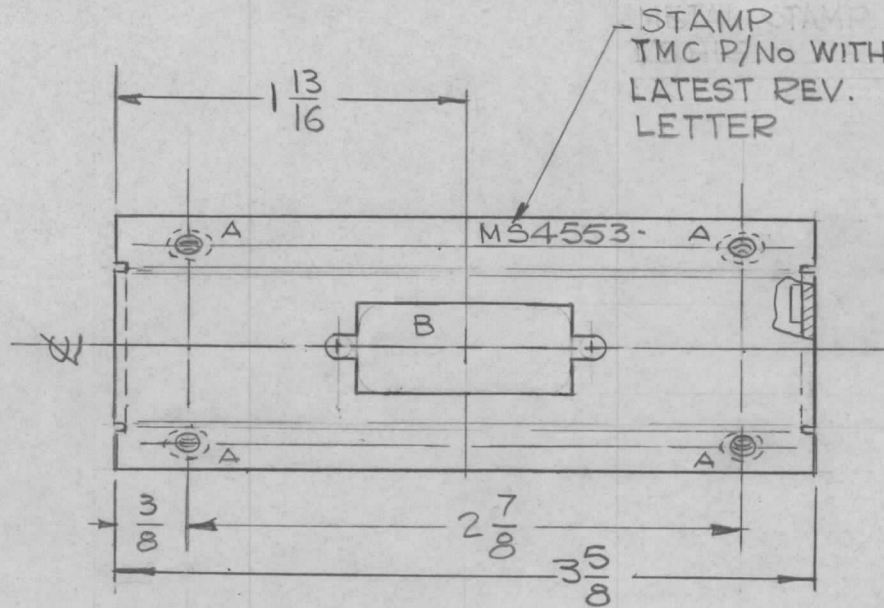


← HOLES ←

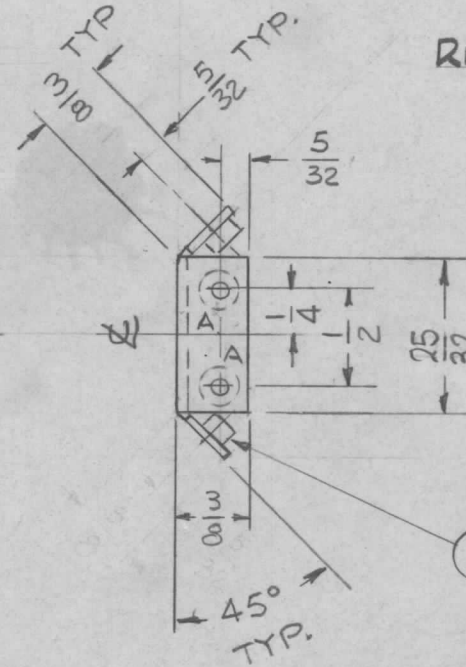
A - .161 - .164 DIA 8 REQ.

B - SEE DETAIL 1 REQ.

REQ. PER UNIT	USED ON		MS4553 \emptyset
	MODEL	ASS'Y. NO.	
2	TSTE-10K		4-30-65

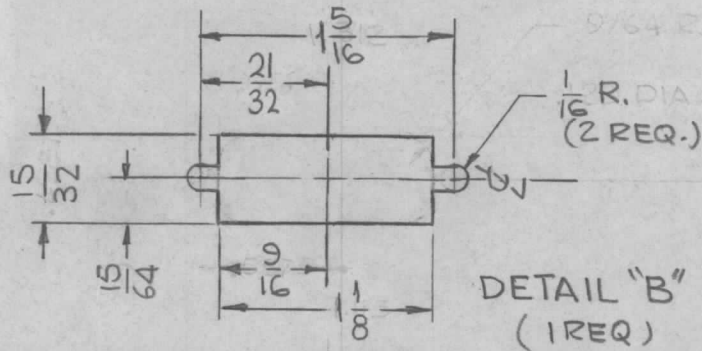


REF. DWG.: LD1925
LD1926



OPPOSITE SIDE SAME

① MOUNT IN ALL "A" HOLES



- UNLESS OTHERWISE SPECIFIED:
1. USE MATERIAL THICKNESS FOR MAXIMUM RADIUS ON ALL BENDS
 2. ALL ANGULAR BENDS 90 DEGREES
 3. REMOVE ALL BURRS AND SHARP EDGES
 4. MOUNT INSERTS AFTER FINISHING

8	1	NT129-440-4	NUT, PLAIN SPLINE	A
REQ. ITEM	PART NO.		F. BUDETTI DESCRIPTION	SYMBOL
	.050 THK		THE TECHNICAL MATERIEL CORP. MAMARONECK, NEW YORK	BRACKET, MTG. CONNECTOR
	STOCK SIZE			
	ALUMINUM			
	MATERIAL			
	5052-H32		G.D.L.	JCB
	TYPE & TEMPER	HEAT TREAT. SPEC.	DRAWN	CHECKED
	S404 YEL. IRIDITE		aa	MS4553 \emptyset
	FINISH & SPEC. NO.		ELEC. DES. APP.	MECH. DES. APP.

\emptyset	ORIGINAL RELEASE	2/15/66				
X1	CUTOUT DIMS WERE DECIMALS 25/32 WAS 13/16	5-17-65	X1	SRG		
SYM	DESCRIPTION	DATE	CH. NO.	DRAFTS	CHECKER	ENG. APP.
UNLESS OTHERWISE SPECIFIED DIMENSIONS ARE IN INCHES AND INCLUDE CHEMICALLY APPLIED OR PLATED FINISHES		SCALE 1:1				
DECIMALS .X \pm .05 .XX \pm .01 .XXX \pm .005	TOLERANCES	FRACTIONS \pm 1/64 ANGLES \pm 0° 30'	CODE A			