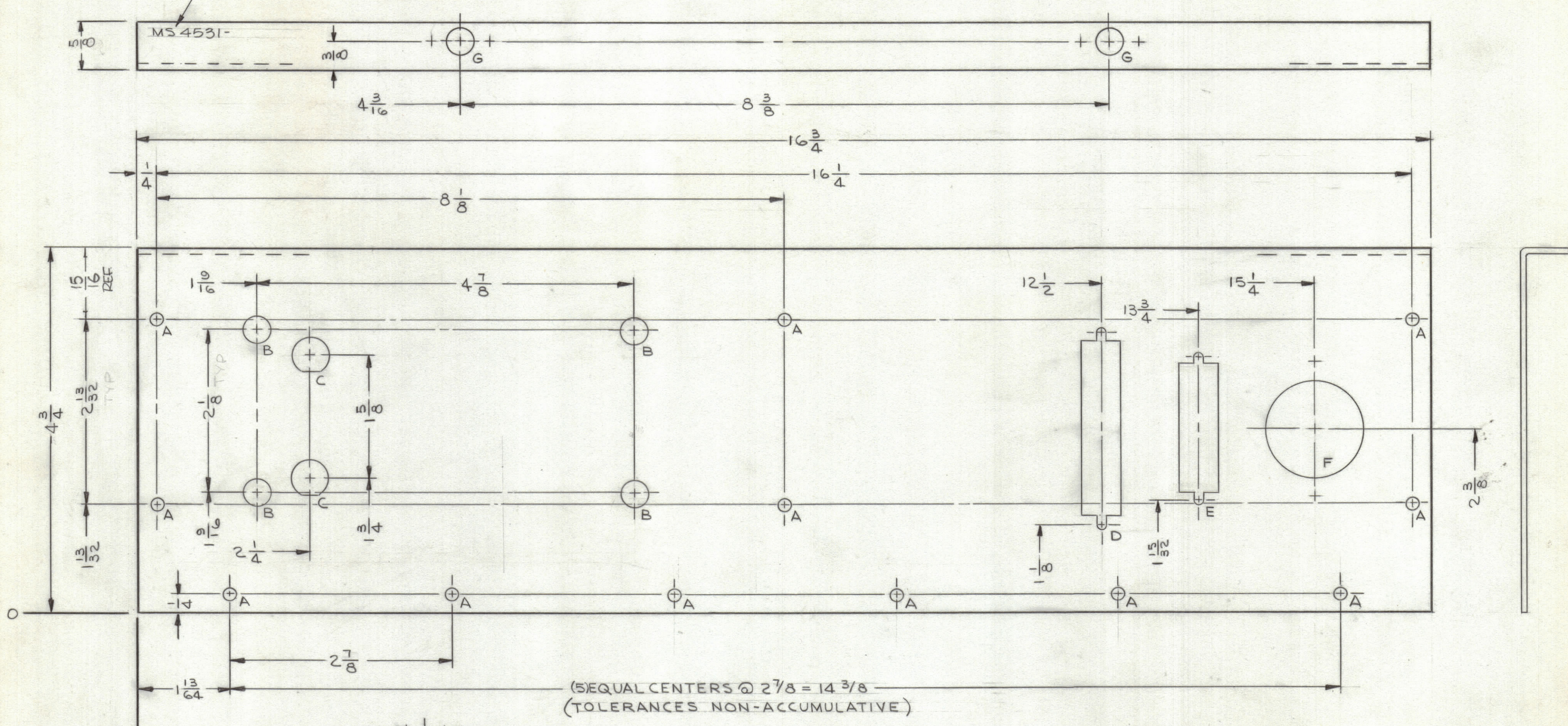
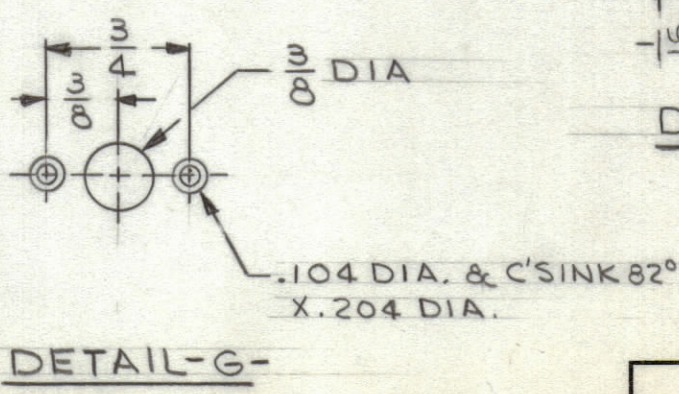
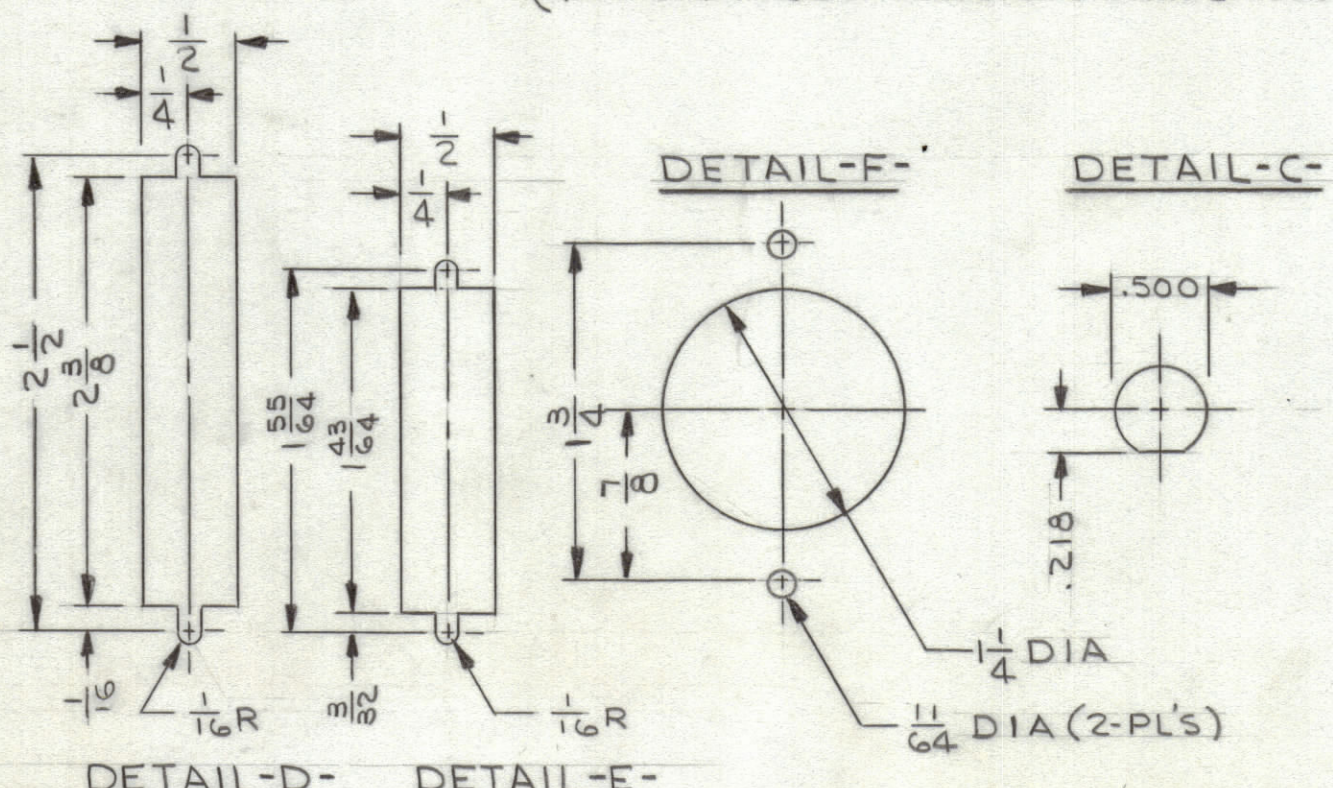


REVISIONS							
ZONE	SYM	DESCRIPTION	DATE	E.M.N. NO.	DRAFT	CHKD	APPD
	Ø	ORIG. RELEASE FOR PRODUCTION	4/30/65		JL		

METAL STAMP TMC PART NO. 1/8  
HIGH GOTHIC W/LATEST REV. LETTER



HOLE LEGEND		
HOLE	DESCRIPTION	REQ'D
A	13/64 DIA	12
B	3/8 DIA	4
C	SEE DETAIL	2
D	↑	1
E	↑	1
F	↑	1
G	SEE DETAIL	2



- UNLESS OTHERWISE SPECIFIED:
1. USE MATERIAL THICKNESS FOR MAXIMUM RADIUS ON ALL BENDS
  2. ALL ANGULAR BENDS 90-DEGREES
  3. REMOVE ALL BURRS AND SHARP EDGES

NOTES

QTY/UNIT	MODEL USED ON	ASS'Y. NO.
1	LRCO-1	
1	LRCB-1	
SCALE	CODE	
1/1		

THE CONTENTS OF THIS DRAWING ARE THE EXCLUSIVE PROPERTY OF THE TECHNICAL MATERIEL CORP. ITS UNAUTHORIZED USE OR REPRODUCTION IN WHOLE OR IN PART IS STRICTLY FORBIDDEN.

REF.: LD1875

REQ'D.	ITEM	PART NUMBER	DESCRIPTION	SYMBOL
F. E. EATON LIST OF MATERIAL				
MATERIAL			THE TECHNICAL MATERIEL CORP.	
.081 THK ALUMINUM			MAMARONECK, NEW YORK	
5052-H32			TITLE	
FINISH			PLATE, REAR	
YELLOW IRIDITE			DRAWN	
PER S404			J. LESHINSKI	
UNLESS OTHERWISE SPECIFIED			DATE	
DIMENSIONS ARE IN INCHES AND INCLUDE			4/22/65	
CHEMICALLY APPLIED OR PLATED FINISHES			CHECKED	
			DATE	
			4/29/65	
DECIMALS			ELECT. DES.	
.X ± .05			DATE	
.XX ± .01			7/30/65	
.XXX ± .005			MECH. DES.	
TOLERANCES			DATE	
FRACTIONS			4/30/65	
± 1/64			SHEET	
ANGLES			MS4531-Ø	
± 0° 30'			REV. LTR.	

MS4531-Ø