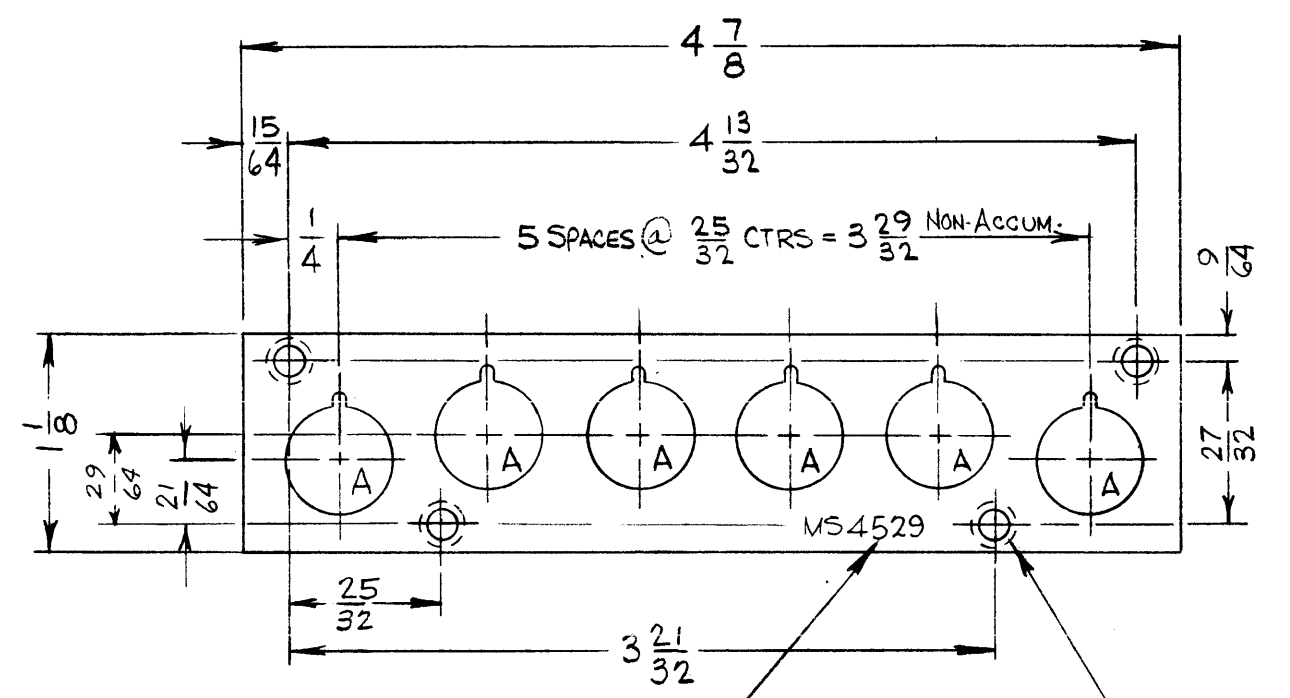


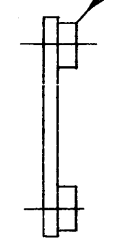
MS4529

REVISIONS

SYM	DESCRIPTION	DATE	E.M.N. NO.	DRAFT	CHKD	APPD
Ø	ORIGINAL RELEASE FOR PRODUCTION	4/22/65	-11	HLA		

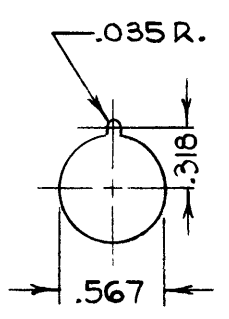


1 MOUNT IN .161-.164 DIA. HOLES
4 PLACES (AFTER FINISHING)



.161-.164 DIA.
4 HOLES

METAL STAMP TMC PART NO. 1/8 HIGH GOTHIC.
W/LATEST REVISION LETTER.



"A"
DETAIL
(6 HOLES REQ.)

4	1	NT129-440-4	NUT, PLN, SPLINE	
REQ'D.	ITEM	PART NUMBER	DESCRIPTION	SYMBOL

ZETENA LIST OF MATERIAL

MATERIAL	.080 ALUMINUM 5052-H 32	THE TECHNICAL MATERIEL CORP. MAMARONECK, NEW YORK
FINISH	S404 YELLOW IRIDITE	TITLE PLATE, PUSHBUTTON SUPPORT RCVR

UNLESS OTHERWISE SPECIFIED DIMENSIONS ARE IN INCHES AND INCLUDE CHEMICALLY APPLIED OR PLATED FINISHES		DRAWN HELENAUSTIN	DATE 4-21-65	FINAL APPROVAL <i>[Signature]</i>	DATE 4/23/65
DECIMALS .X ± .05 .XX ± .01 .XXX ± .005	FRACTIONS ± 1/64 ANGLES ± 0° 30'	CHECKED <i>[Signature]</i>	DATE 4/22/65	MS4529	
TOLERANCES		ELECT. DES. <i>[Signature]</i>	DATE 4-23-65	Ø	
		MECH. DES. <i>[Signature]</i>	DATE	SHEET	
				REV. LTR.	

1	LRCC-1	AX 567
Q'TY./UNIT	MODEL USED ON	ASS'Y. NO.
SCALE 1:1	CODE	
THE CONTENTS OF THIS DRAWING ARE THE EXCLUSIVE PROPERTY OF THE TECHNICAL MATERIEL CORP. ITS UNAUTHORIZED USE OR REPRODUCTION IN WHOLE OR IN PART IS STRICTLY FORBIDDEN.		

NOTES