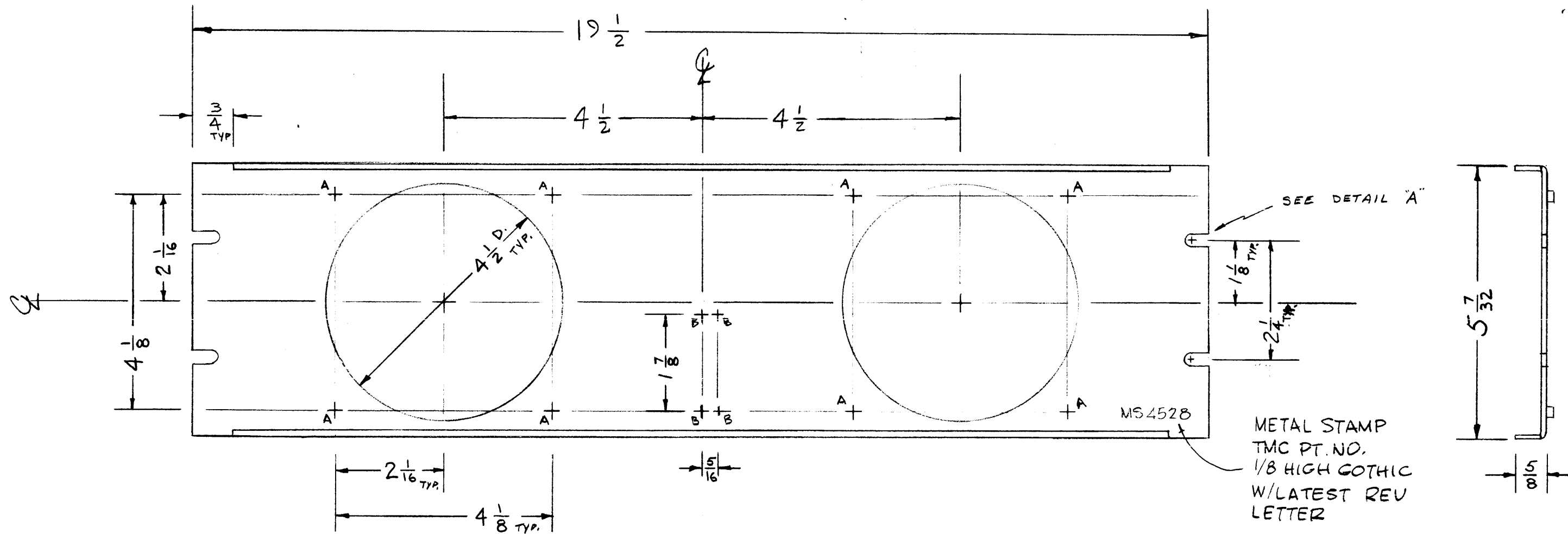
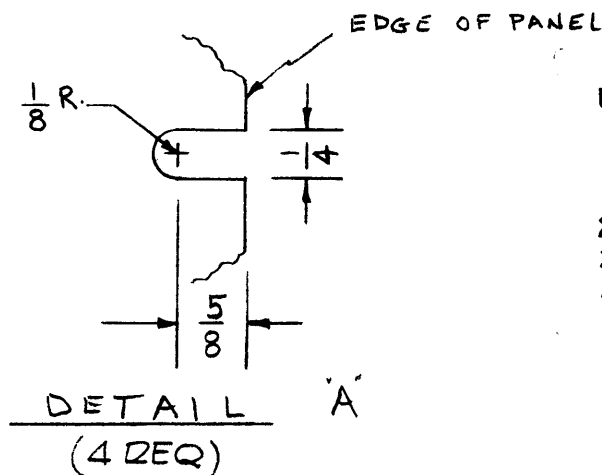


REVISIONS						
SYM	DESCRIPTION	DATE	FM N NO.	DRAFT	CHKD	APPD
Ø	ORIGINAL RELEASE FOR PRODUCTION	4/22/65	AA	MS		
A	CLERICAL CHAGE	8-3-65	CC	E		



A - .191-.194 DIA. (8 REQ.)  
 B - 1/8 DIA. (4 REQ.)



UNLESS OTHERWISE SPECIFIED:

1. USE MATERIAL THICKNESS FOR MAXIMUM RADIUS ON ALL BENDS
2. ALL ANGULAR BENDS 90 DEGREES
3. REMOVE ALL BURRS AND SHARP EDGES
4. MOUNT INSERTS AFTER FINISHING

DETAIL A  
(4 REQ)

NOTES

2	DDRR-506	A2961
Q'TY./UNIT	MODEL USED ON	ASS'Y. NO.
SCALE #	CODE A	

THE CONTENTS OF THIS DRAWING ARE THE EXCLUSIVE PROPERTY OF THE TECHNICAL MATERIEL CORP. ITS UNAUTHORIZED USE OR REPRODUCTION IN WHOLE OR IN PART IS STRICTLY FORBIDDEN.

8	1	NT129-632-4	NUT, PLN, SPLINE	
REQ'D.	ITEM	PART NUMBER	DESCRIPTION	SYMBOL
LIST OF MATERIAL				
MATERIAL 081ALUM. 5052-H32			THE TECHNICAL MATERIEL CORP. MAMARONECK, NEW YORK	
FINISH S404 YEL. IRIDITE			TITLE BRACKET, MTG., FAN	
UNLESS OTHERWISE SPECIFIED DIMENSIONS ARE IN INCHES AND INCLUDE CHEMICALLY APPLIED OR PLATED FINISHES		DRAWN M. STURMER	DATE 4-21-65	FINAL APPROVAL [Signature]
DECIMALS .X ± .05 .XX ± .01 .XXX ± .005		TOLERANCES ± 1/64 ANGLES ± 0° 30'		DATE 4/22/65
		ELECT. DES. [Signature]		DATE 4-22-65
		MECH. DES. [Signature]		DATE 4-22-65
			SHEET MS4528	
			REV. LTR. A	