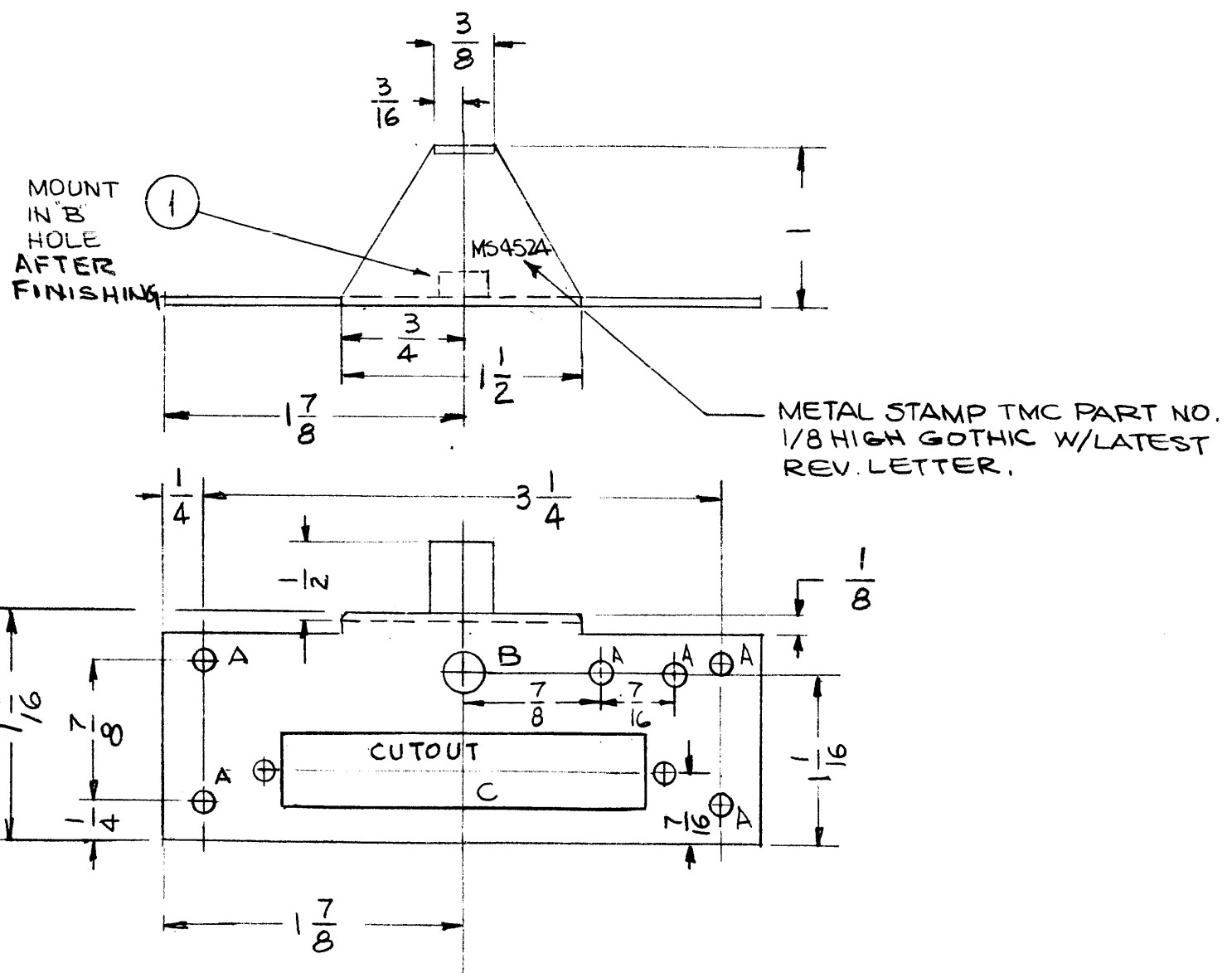
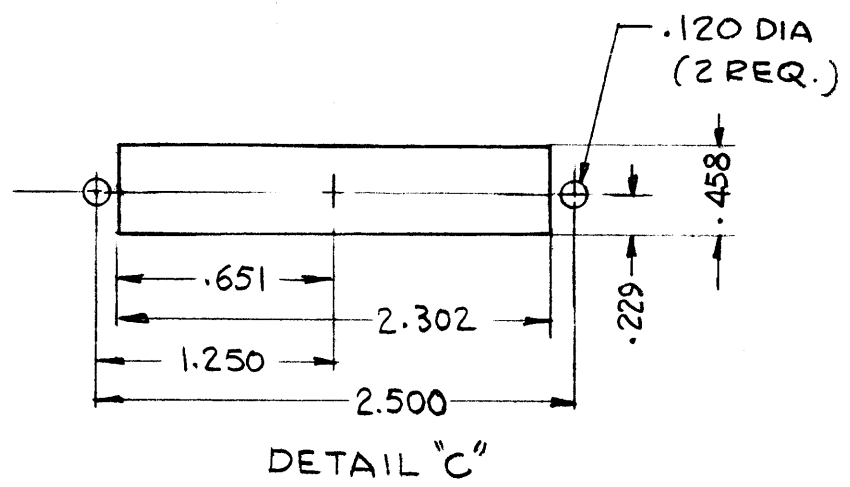


MS452A

REVISIONS					
SYM	DESCRIPTION	DATE	F.M.N. NO.	DRAFT	CHKD APPD
X1	B HOLE WAS 1/4 DIA. 2 A HOLES ADDED, NT ADDED	5-3-65	X1	SKG	DA
X2	17/16 DIM. ADDED	5-14-65	X2	AKC	
Ø	ORIGINAL RELEASE FOR PRODUCTION	5/17/67	Ø	CV	JLQ



HOLE	DESCRIPTION	REQ.
A	9/64 DIA	6
B	.344-.347 DIA.	1
C	SEE DETAIL	1



- UNLESS OTHERWISE SPECIFIED:
1. USE MATERIAL THICKNESS FOR MAXIMUM RADIUS ON ALL BENDS
  2. ALL ANGULAR BENDS 90 DEGREES
  3. REMOVE ALL BURRS AND SHARP EDGES

NOTES

5	TSTE 10K	
Q'TY./UNIT	MODEL USED ON	ASS'Y. NO.
SCALE 1:1	CODE A	

THE CONTENTS OF THIS DRAWING ARE THE EXCLUSIVE PROPERTY OF THE TECHNICAL MATERIEL CORP. ITS UNAUTHORIZED USE OR REPRODUCTION IN WHOLE OR IN PART IS STRICTLY FORBIDDEN.

1	1	NT129-2520-4	NUT, PLAIN, SPLINE	B
REQ'D.	ITEM	PART NUMBER	DESCRIPTION	SYMBOL
F. BUDETTI LIST OF MATERIAL				
MATERIAL			THE TECHNICAL MATERIEL CORP. MAMARONECK, NEW YORK	
FINISH			TITLE	
.063 ALUMINUM 5052-H32			BRACKET, MTG, CONNECTOR	
S404 YEL. IRIDITE				
UNLESS OTHERWISE SPECIFIED DIMENSIONS ARE IN INCHES AND INCLUDE CHEMICALLY APPLIED OR PLATED FINISHES			DRAWN G.D.L.	DATE 4-20-65
			CHECKED	DATE
			ELECT. DES.	DATE
			MECH. DES.	DATE
			FINAL APPROVAL MS4524	
			SHEET	
			REV. LTR.	