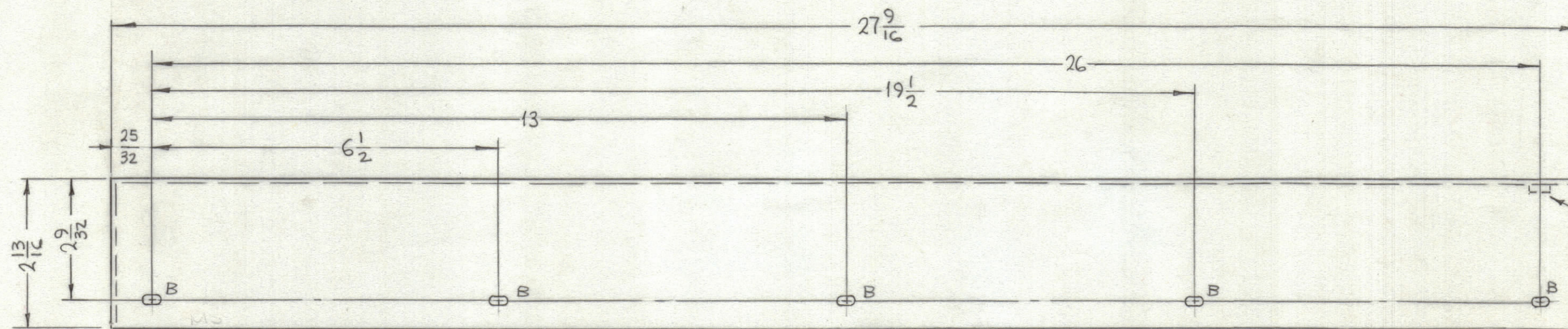
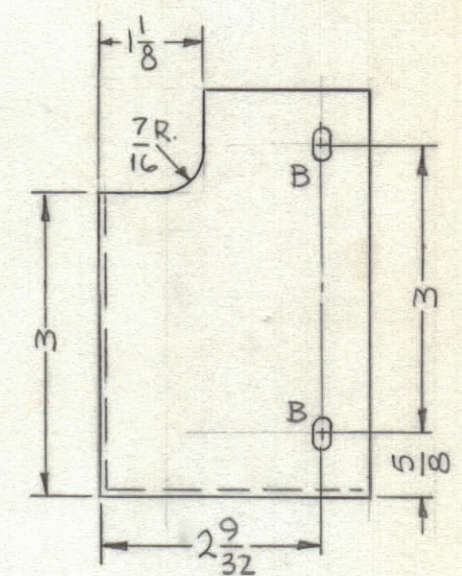
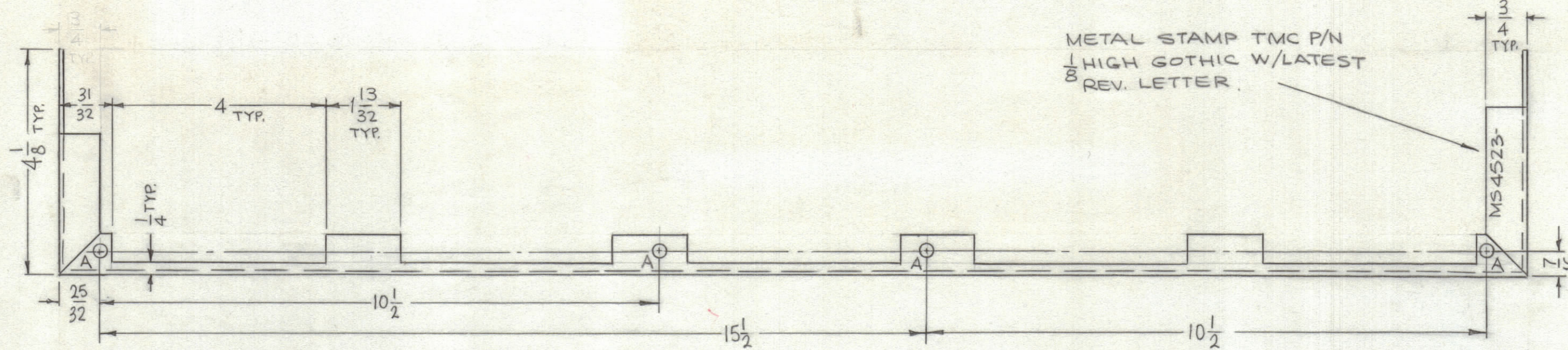
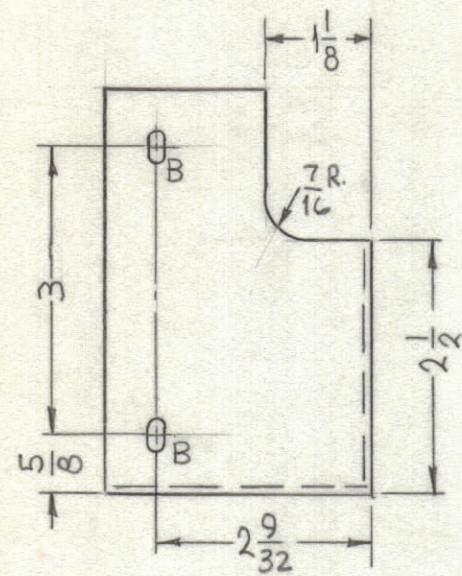


REVISIONS							
ZONE	SYM	DESCRIPTION	DATE	E.M.N. NO.	DRAFT	CHKD	APPD
X3		COMPLETELY REVISED & REDRAWN	9-27-65	X3			
B		ORIG. RELEASE FOR PRODUCTION	9-16-68	B	R.G.		



MS4523

HOLES	DESCRIPTION	REQ.
A	.221-.224 DIA.	4
B	5/32 X 5/16 SLOT	9

UNLESS OTHERWISE SPECIFIED:

1. USE MATERIAL THICKNESS FOR MAXIMUM RADIUS ON ALL BENDS
2. ALL ANGULAR BENDS 90 DEGREES
3. REMOVE ALL BURRS AND SHARP EDGES
4. MOUNT INSERTS AFTER FINISHING

1	TST-10K	
Q'TY./UNIT	MODEL USED ON	ASS'Y. NO.
SCALE	CODE	
1/2:1	A	

THE CONTENTS OF THIS DRAWING ARE THE EXCLUSIVE PROPERTY OF THE TECHNICAL MATERIEL CORP. ITS UNAUTHORIZED USE OR REPRODUCTION IN WHOLE OR IN PART IS STRICTLY FORBIDDEN.

4	1	NT129-832-4	NUT, PLAIN, SPLINE	A
REQ'D.	ITEM	PART NUMBER	DESCRIPTION	SYMBOL
F. BUDETTI LIST OF MATERIAL				
MATERIAL			THE TECHNICAL MATERIEL CORP.	
.064 THICK ALUMINUM 5052-H32			MAMARONECK, NEW YORK	
FINISH			TITLE	
S404 YEL. IRIDITE			SHIELD, CABLE	
UNLESS OTHERWISE SPECIFIED DIMENSIONS ARE IN INCHES AND INCLUDE CHEMICALLY APPLIED OR PLATED FINISHES		DRAWN	DATE	FINAL APPROVAL
		DATE	DATE	DATE
DECIMALS		ELECT. DES.		
.X ± .05		DATE		
.XX ± .01		DATE		
.XXX ± .005		DATE		
FRACTIONS		SHEET		
± 1/64		REV. LTR.		
ANGLES				
± 0° 30'				

NOTES