

REVISIONS						
ZONE	SYM	DESCRIPTION	DATE	E.M.N. NO.	DRAFT	CHKD
	Ø	ORIGINAL RELEASE FOR PRODUCTION	4-21-65		HLA	
	A	SIDE VIEW, NOTE 4, & IT.1 ADDED.	4-29-65	13990		

MACHINING:

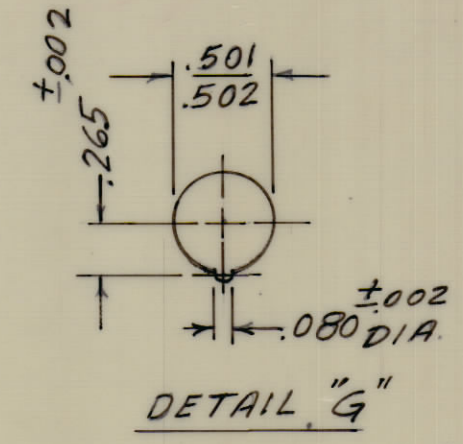
1. MILL ALL EDGES.
2. HOLES MUST BE DRILLED, UNLESS OTHERWISE SPECIFIED.
3. LATERAL BOW OF PANEL MUST BE KEPT TO .031 TOLERANCE.
4. PANEL MUST BE FREE OF ALL MACHINING MARKS, GOUGES AND SCRATCHES. IF NECESSARY, SAND FRONT OF PANEL WITH NO. 120 GRIT SANDPAPER.

FINISH NOTES:

1. S404 - IRIDITE 14-2 AL-COAT.
2. S114 - ZINC CHROMATE PRIMER) FRONT AND
3. S115 - SMOOTH GRAY ENAMEL) EDGES ONLY

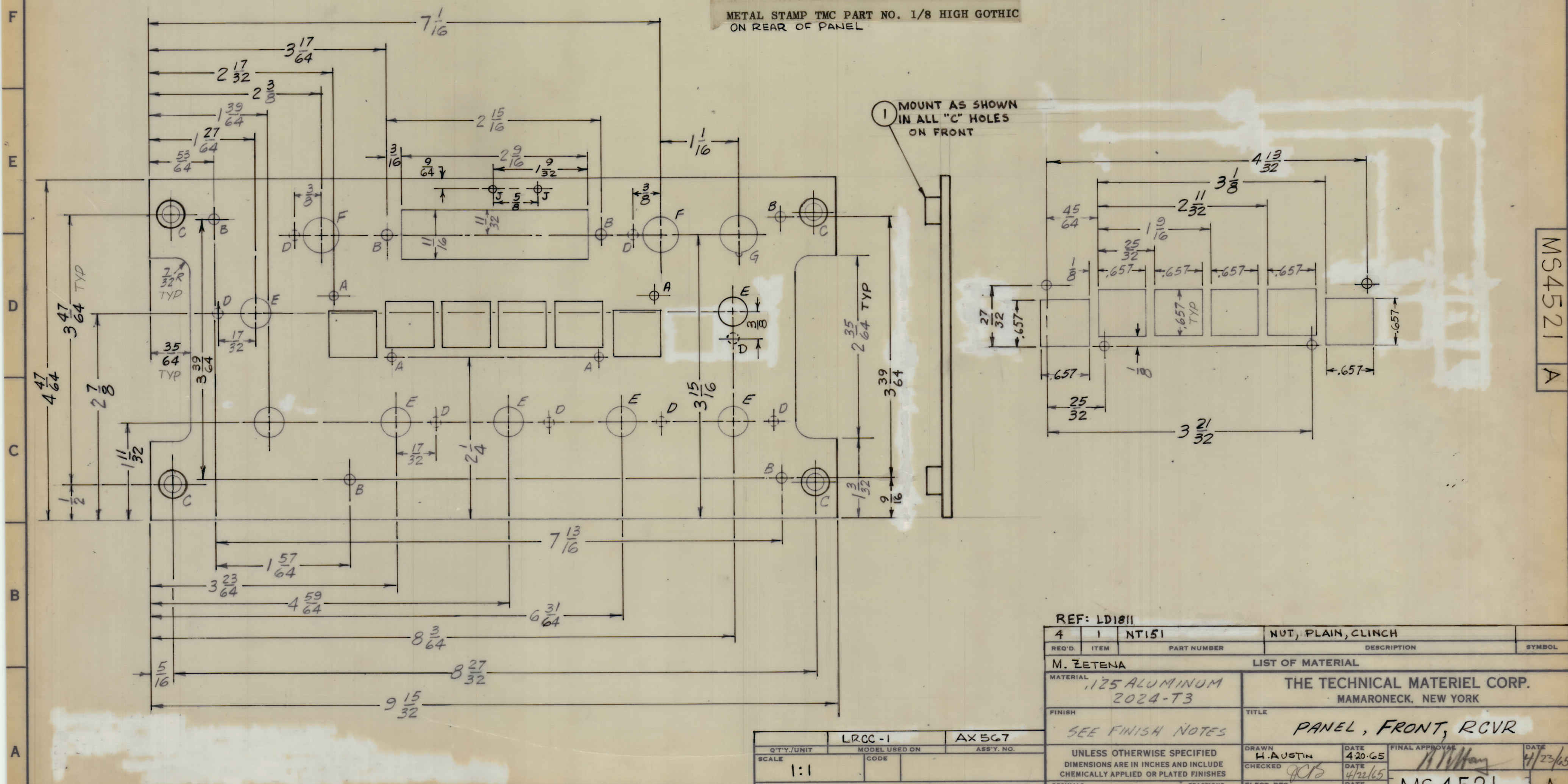
OR
PRIME AND PAINT PER CUSTOMER'S SPECIFICATIONS.

4. MOUNT ITEM 1 AFTER FINISHING



HOLE LEGEND		
A	.125 DIA	4
B	5/32 DIA	6
C	.250 DIA. & .375 DIA. C BORE 1/32 DEEP ON REAR	4
D	5/32 DIA. x 1/16 DEEP ON REAR	8
E	13/32 DIA	6
F	1/2 DIA	2
G	SEE DETAIL	1
H	3/8 DIA	1
J	#47 DRILL (.078 DIA.)	2

METAL STAMP TMC PART NO. 1/8 HIGH GOTHIC ON REAR OF PANEL



MS4521 A

REF: LD1811

4	1	NT151	NUT, PLAIN, CLINCH
REQ'D.	ITEM	PART NUMBER	DESCRIPTION
M. ZETENA LIST OF MATERIAL			
MATERIAL		THE TECHNICAL MATERIEL CORP.	
.125 ALUMINUM 2024-T3		MAMARONECK, NEW YORK	
FINISH		TITLE	
SEE FINISH NOTES		PANEL, FRONT, RCVR	
UNLESS OTHERWISE SPECIFIED DIMENSIONS ARE IN INCHES AND INCLUDE CHEMICALLY APPLIED OR PLATED FINISHES		DRAWN	DATE
		H. AUSTIN	4-20-65
		CHECKED	DATE
		JOB	4/22/65
		ELECT. DES.	DATE
		MECH. DES.	DATE
			4-22-65
		MS4521 A	

QTY/UNIT	LRCC-1	AX567
SCALE	MODEL USED ON	ASSY. NO.
1:1		
THE CONTENTS OF THIS DRAWING ARE THE EXCLUSIVE PROPERTY OF THE TECHNICAL MATERIEL CORP. ITS UNAUTHORIZED USE OR REPRODUCTION IN WHOLE OR IN PART IS STRICTLY FORBIDDEN.		

NOTES