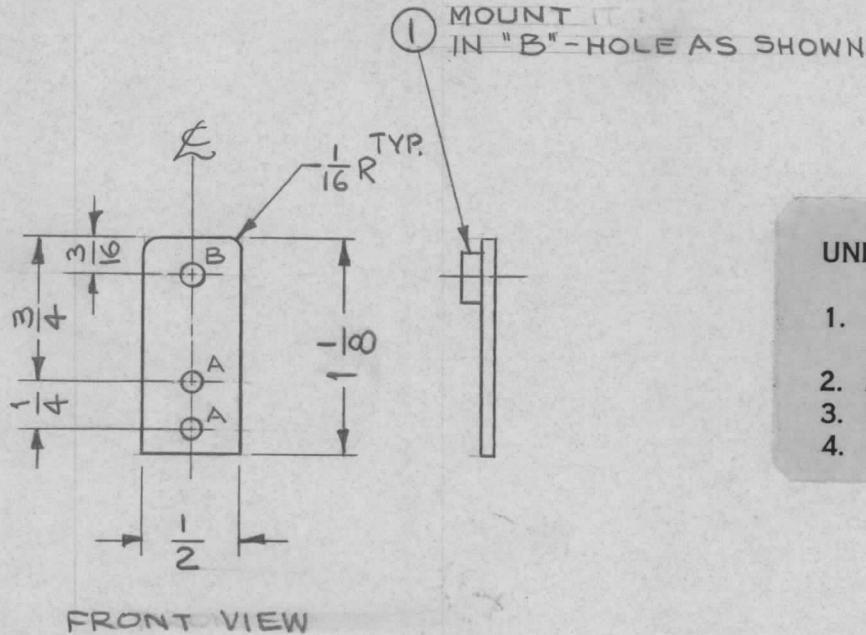


HOLES

A ~ 1/8 DIA — 2
 B ~ .191-.194 DIA — 1

REQ

REQ. PER UNIT	USED ON			MS4507 Ø
	MODEL	ASS'Y. NO.	DATE	
2	TSTE10K		4.7.1965	



UNLESS OTHERWISE SPECIFIED:

1. USE MATERIAL THICKNESS FOR MAXIMUM RADIUS ON ALL BENDS
2. ALL ANGULAR BENDS 90 DEGREES
3. REMOVE ALL BURRS AND SHARP EDGES
4. MOUNT INSERTS AFTER FINISHING

FINISH NOTES:

1. S404 - IRIDITE 14-2 AL-COAT.
2. S114 - ZINC CHROMATE PRIMER) FRONT AND
3. S115 - SMOOTH GRAY ENAMEL) EDGES ONLY

Ø	ORIGINAL RELEASE FOR PRODUCTION	5/16/67	Ø	CV		
X ₁	FINISH WAS S404	4-22-65	X ₁	SRC	CA	
SYM	DESCRIPTION	DATE	CH. NO.	DRAFTS	CHECKER	ENG. APP.
UNLESS OTHERWISE SPECIFIED DIMENSIONS ARE IN INCHES AND INCLUDE CHEMICALLY APPLIED OR PLATED FINISHES		SCALE 1:1				
DECIMALS .X ± .05 .XX ± .01 .XXX ± .005	TOLERANCES	FRACTIONS ± 1/64 ANGLES ± 0° 30'	CODE A			

1	1	NT129-632-4	NUT, PLAIN, SPLINE	B
REQ.	ITEM	PART NO.	F. BUDETTI DESCRIPTION	SYMBOL
		.064 THICK	THE TECHNICAL MATERIEL CORP. MAMARONECK, NEW YORK	
		STOCK SIZE	PLATE, RETAINER, DOOR	
		ALUMINUM		
		MATERIAL		
		5052 H32	ASB	DB
		TYPE & TEMPER	HEAT TREAT. SPEC.	DRAWN
		SEE NOTES	a.q	J.S.
		FINISH & SPEC. NO.	ELEC. DES. APP.	MECH. DES. APP.
				MS4507 Ø