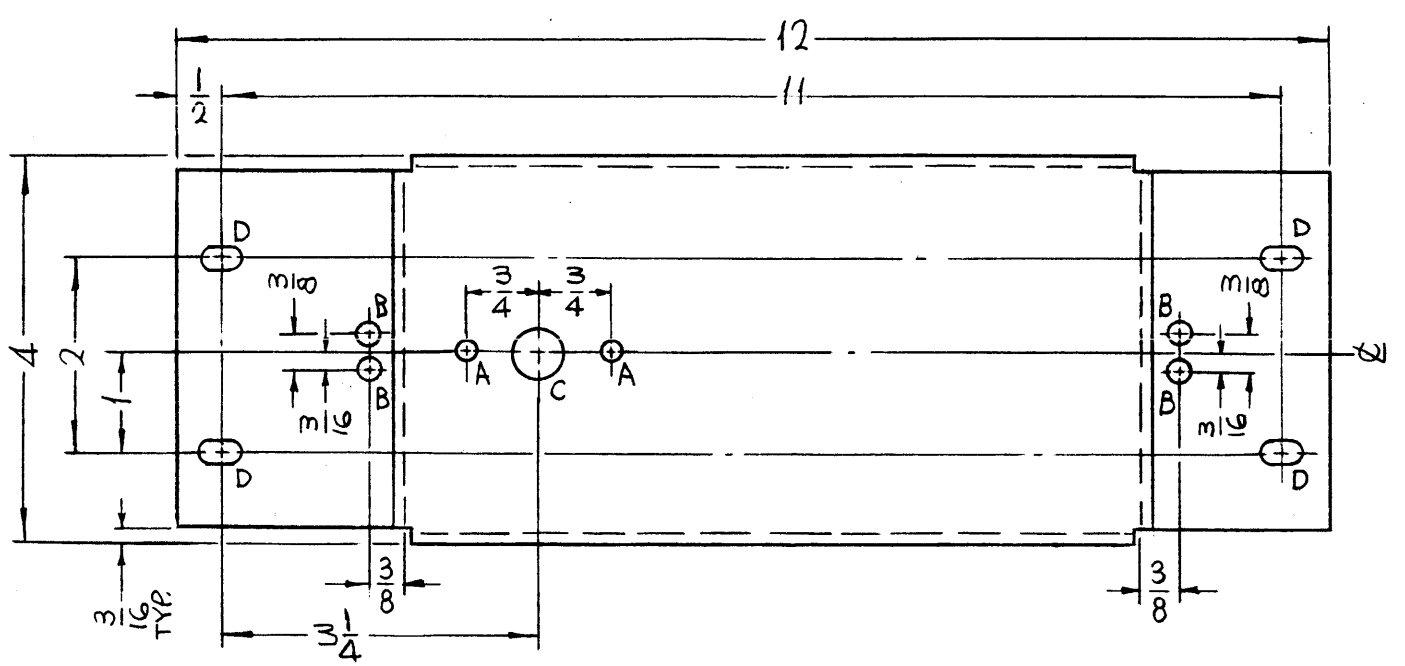
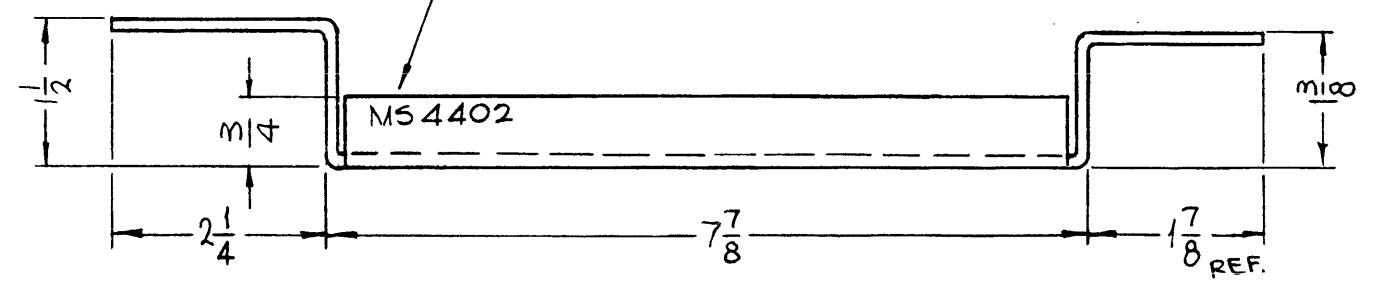


MS4402

| REVISIONS | | | | | | |
|-----------|---------------------------------|---------|------------|-------|------|-------------|
| SYM | DESCRIPTION | DATE | E.M.N. NO. | DRAFT | CHKD | APPD |
| X | EXP. RELEASE | 2-25-65 | X | SRG | | |
| Ø | ORIGINAL RELEASE FOR PRODUCTION | 5-17-66 | Ø | C.V | | <i>File</i> |

METAL STAMP TMC PART NO. 1/8 HIGH GOTHIC W/LATEST REV. LETTER



| HOLES | DESCRIPTION | REQ. |
|-------|--------------------|------|
| A | 11/64 (.171) DIA. | 2 |
| B | 13/64 (.203) DIA. | 4 |
| C | 1/2 (.500) DIA. | 1 |
| D | 13/64 X 13/32 SLOT | 4 |

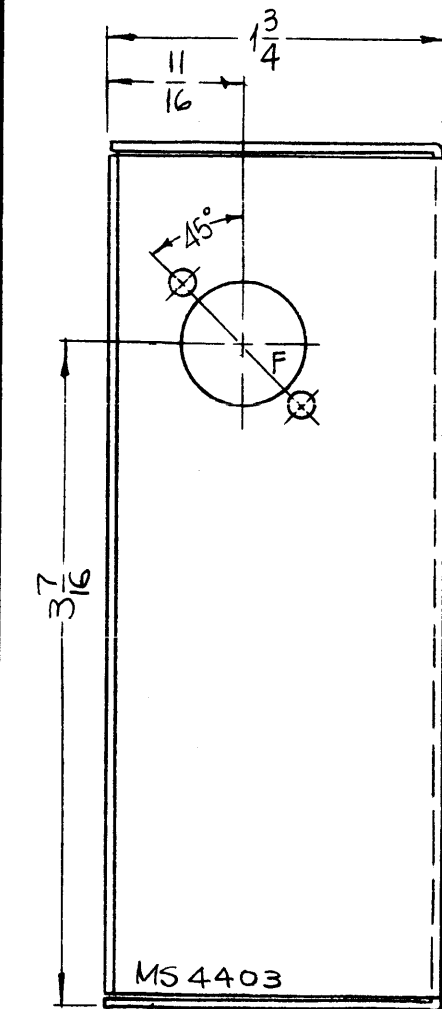
REF: LD1803

| REQ'D. | ITEM | PART NUMBER | DESCRIPTION | SYMBOL |
|---|------|---|--|---|
| F. BUDETTI LIST OF MATERIAL | | | | |
| MATERIAL 1/8 THICK ALUMINUM 5052-H32 | | | THE TECHNICAL MATERIEL CORP. MAMARONECK, NEW YORK | |
| FINISH S404 YEL. IRIDITE | | | TITLE PLATE, RF CONNECTOR | |
| UNLESS OTHERWISE SPECIFIED DIMENSIONS ARE IN INCHES AND INCLUDE CHEMICALLY APPLIED OR PLATED FINISHES | | | DRAWN <i>SRG</i> DATE 2-25-65 CHECKED <i>SRG</i> DATE ELECT. DES. <i>SRG</i> DATE 5-13-66 MECH. DES. DATE | FINAL APPROVAL <i>[Signature]</i> DATE 5/17/66 MS4402 Ø SHEET REV. LTR. |
| DECIMALS .X ± .05 .XX ± .01 .XXX ± .005 | | FRACTIONS ± 1/64 ANGLES ± 0° 30' | | TOLERANCES MK <i>[Signature]</i> 5/16/66 |

- UNLESS OTHERWISE SPECIFIED:
- USE MATERIAL THICKNESS FOR MAXIMUM RADIUS ON ALL BENDS
 - ALL ANGULAR BENDS 90 DEGREES
 - REMOVE ALL BURRS AND SHARP EDGES

NOTES

| | | |
|---|---------------|------------|
| 1 | TST()10K | |
| Q'TY./UNIT | MODEL USED ON | ASS'Y. NO. |
| SCALE 1/2:1 | CODE A | |
| THE CONTENTS OF THIS DRAWING ARE THE EXCLUSIVE PROPERTY OF THE TECHNICAL MATERIEL CORP. ITS UNAUTHORIZED USE OR REPRODUCTION IN WHOLE OR IN PART IS STRICTLY FORBIDDEN. | | |

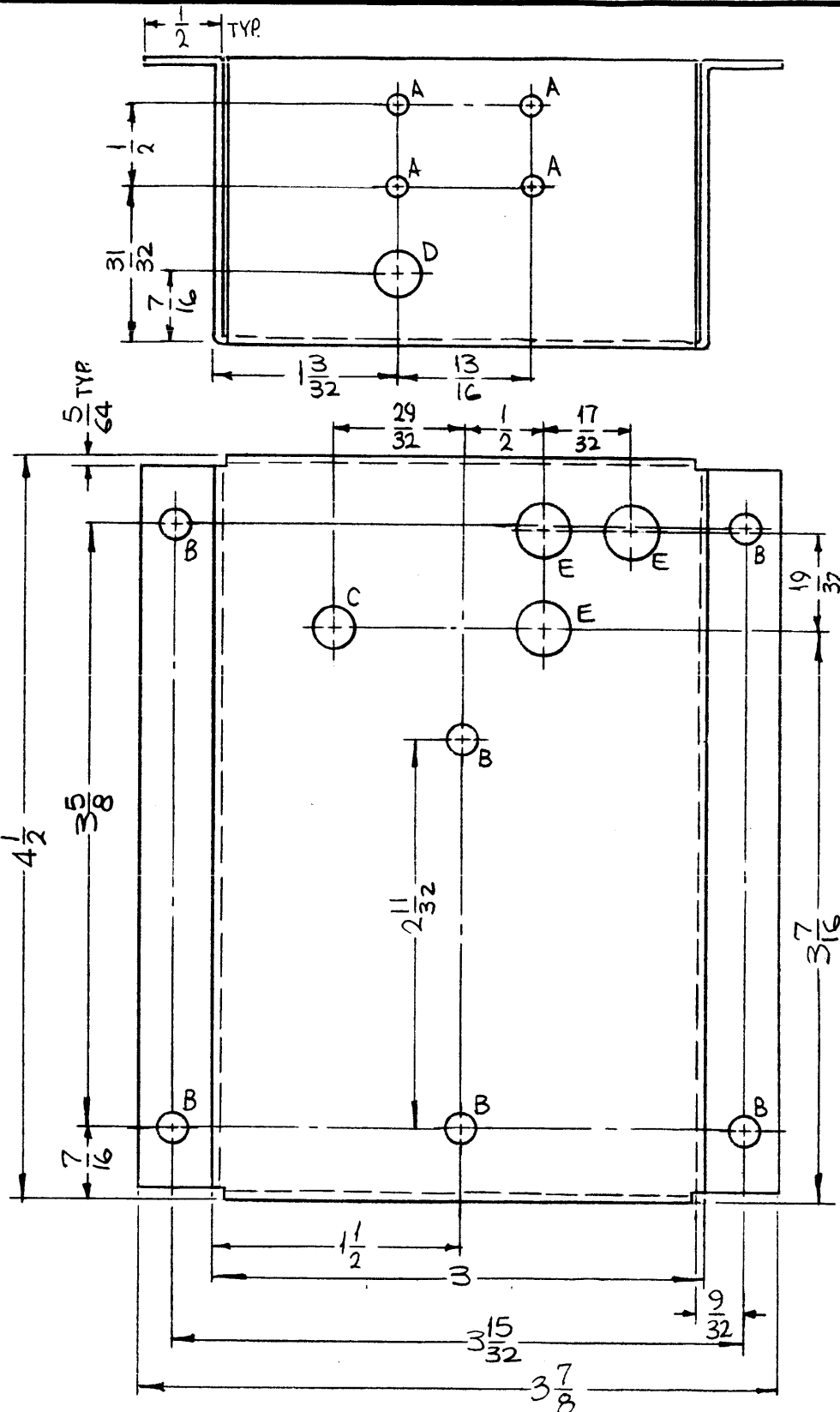


METAL STAMP TMC PART NO 1/8 HIGH GOTHIC W/LATEST REV. LETTER.

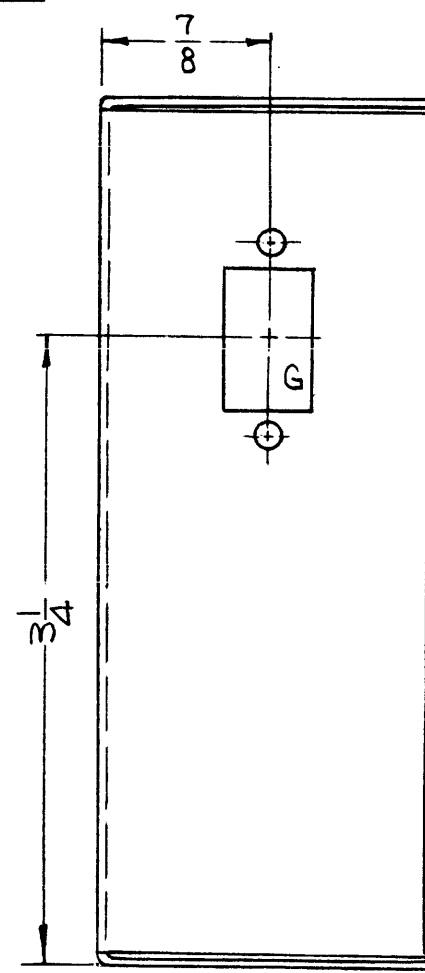
UNLESS OTHERWISE SPECIFIED:

1. USE MATERIAL THICKNESS FOR MAXIMUM RADIUS ON ALL BENDS
2. ALL ANGULAR BENDS 90 DEGREES
3. REMOVE ALL BURRS AND SHARP EDGES

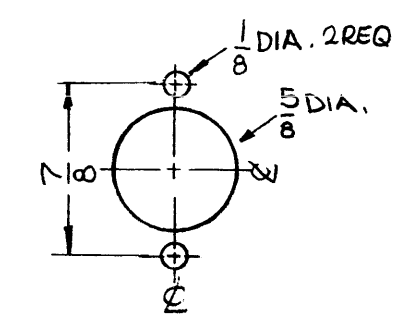
NOTES



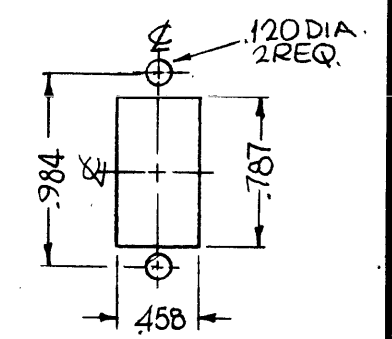
MS4403



| HOLES | DESCRIPTION | REQ |
|-------|-------------|-----|
| A | 7/64 DIA. | 4 |
| B | 11/64 DIA. | 6 |
| C | 1/4 DIA. | 1 |
| D | 17/64 DIA. | 1 |
| E | 5/16 DIA. | 3 |
| F | SEE DETAIL | 1 |
| G | SEE DETAIL | 1 |



F-DETAIL



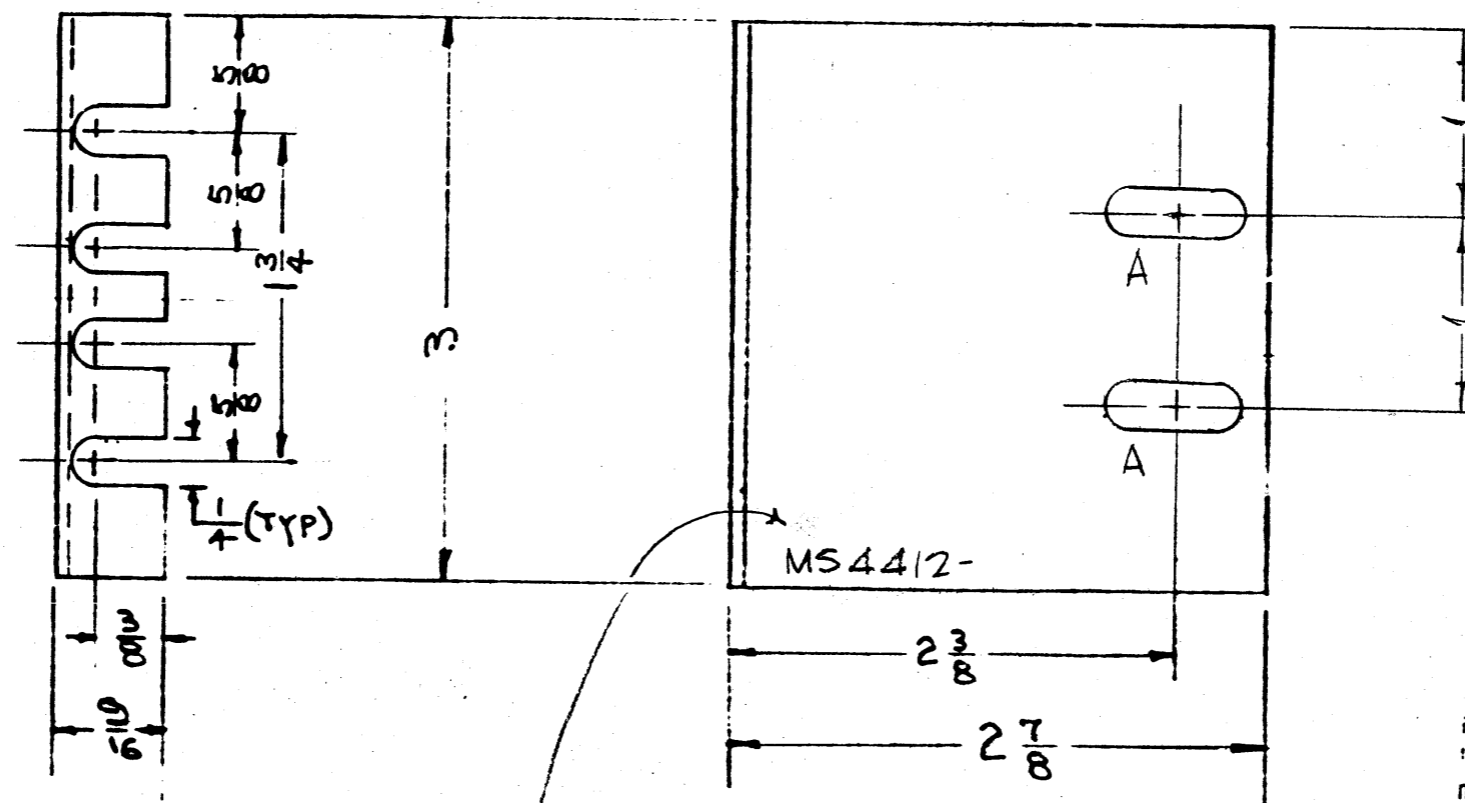
G-DETAIL

| REVISIONS | | | | | |
|-----------|--|---------|------------|-------|------|
| SYM | DESCRIPTION | DATE | E.M.N. NO. | DRAFT | CHKD |
| X | EXP. RELEASE | 3-1-65 | X | SRG | |
| X1 | 3 7/8 DIM WAS 1 29/32 (ERROR) MAT'L THKNESS WAS .046 | 4-6-65 | -M | SRG | |
| Ø | ORIGINAL RELEASE FOR PRODUCTION | 7/26/67 | Ø | CV | |

| REQ'D. | ITEM | PART NUMBER | DESCRIPTION | SYMBOL |
|---|------|-------------|--|-----------------|
| F. BUDETTI LIST OF MATERIAL | | | | |
| MATERIAL .063 THICK ALUMINUM 5052-H32 | | | THE TECHNICAL MATERIEL CORP. MAMARONECK, NEW YORK | |
| FINISH S404 YELLOW IRIDITE | | | TITLE CHASSIS, METERING & LOAD SENSING | |
| UNLESS OTHERWISE SPECIFIED DIMENSIONS ARE IN INCHES AND INCLUDE CHEMICALLY APPLIED OR PLATED FINISHES | | | DRAWN SRG | DATE 3-1-65 |
| DECIMALS .X ± .05 .XX ± .01 .XXX ± .005 | | | CHECKED | DATE |
| FRACTIONS ± 1/64 ANGLES ± 0° 30' | | | ELECT. DES. SRG | DATE |
| TOLERANCES | | | MECH. DES. SRG | DATE 7/26/67 |
| THE CONTENTS OF THIS DRAWING ARE THE EXCLUSIVE PROPERTY OF THE TECHNICAL MATERIEL CORP. ITS UNAUTHORIZED USE OR REPRODUCTION IN WHOLE OR IN PART IS STRICTLY FORBIDDEN. | | | FINAL APPROVAL MS 4403 | |
| SCALE 1:1 | | | REV. LTR. Ø | |

MS 4412 Ø

A- 1/4 x 3/4 SLOTS 2 REQ



METAL STAMP TMC PT. NO.
1/8 HIGH GOTHIC W/ LATEST
REV. LETTERS.

NOTED PERSONS RECEIVING THIS DRAWING

THE TECHNICAL MATERIEL CORPORATION claims proprietary right in the material disclosed hereon. This drawing is issued in confidence for engineering information only and may not be reproduced or used to manufacture anything shown hereon without permission from THE TECHNICAL MATERIEL CORPORATION to the user. This drawing is loaned for mutual assistance and is subject to recall at any time.

Property of:
THE TECHNICAL MATERIEL CORPORATION
MAMARONECK, NEW YORK

REF: TK-114
TK-115

| Ø | ORIGINAL RELEASE FOR PRODUCTION | 3-10-65 | AM | | | |
|-----|---|-----------------|---------|--------|---------|-----------|
| SYM | DESCRIPTION | DATE | CH. NO. | DRAFTS | CHECKER | ENG. APP. |
| | UNLESS OTHERWISE SPECIFIED: DIMENSIONS ARE IN INCHES TOLERANCES ON FRACTIONS ± 1/64 DECIMALS ± .005 ANGLES ± 1/2 | SCALE: <i>1</i> | | | | |

| 10 | TSTE10K | AX563 | | | | 3-10-65 |
|---------------|---------|---------|-----------|-----|---------|---------|
| REQ. PER UNIT | MODEL | SECTION | ASSY. NO. | ATE | USED ON | |

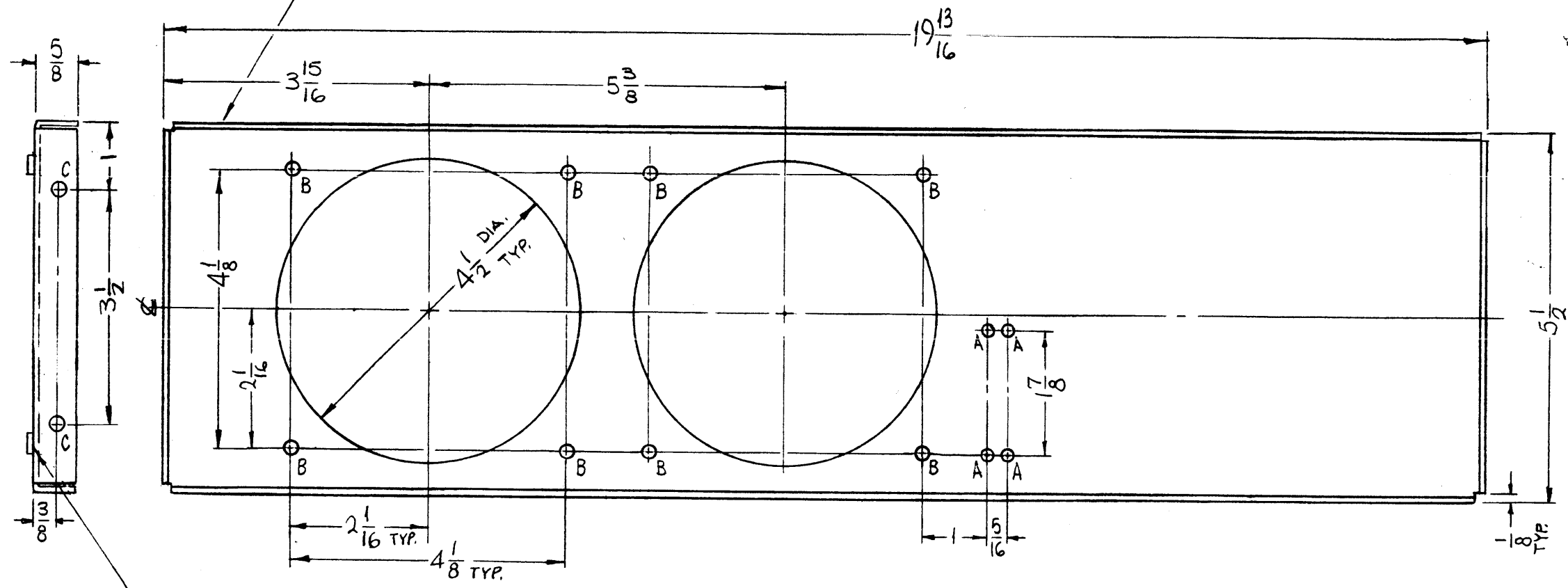
| REQ. ITEM | PART NO. | DESCRIPTION | SYMBOL | | | | | | | | | | |
|---------------------------------|-------------------|--|-----------------|------------------------|-------|---------|----------------|--|--|------------|-----------|------------------------|--|
| .062 GA | | THE TECHNICAL MATERIEL CORP. MAMARONECK, NEW YORK | | | | | | | | | | | |
| STEEL | | BRACKET, EXTENSION | | | | | | | | | | | |
| MILD | | | | | | | | | | | | | |
| CADMIUM PLATE YELLOW IRIDITE | | | | | | | | | | | | | |
| | | <table border="0"> <tr> <td>TYPE & TEMPER</td> <td>HEAT TREAT. SPEC.</td> <td>DRAWN</td> <td>CHECKER</td> <td>FINAL APPROVAL</td> </tr> <tr> <td></td> <td></td> <td><i>Hla</i></td> <td><i>JM</i></td> <td><i>William</i> 3/23/65</td> </tr> </table> | TYPE & TEMPER | HEAT TREAT. SPEC. | DRAWN | CHECKER | FINAL APPROVAL | | | <i>Hla</i> | <i>JM</i> | <i>William</i> 3/23/65 | |
| TYPE & TEMPER | HEAT TREAT. SPEC. | DRAWN | CHECKER | FINAL APPROVAL | | | | | | | | | |
| | | <i>Hla</i> | <i>JM</i> | <i>William</i> 3/23/65 | | | | | | | | | |
| | | ELEC. DES. APP. | MECH. DES. APP. | MS4412 Ø | | | | | | | | | |

MS4413

| REVISIONS | | | | | | |
|-----------|---|---------|------------|-------|------|------|
| SYM | DESCRIPTION | DATE | E.M.N. NO. | DRAFT | CHKD | APFD |
| X | EXP. RELEASE | 3-4-65 | X | SRG | | |
| X1 | ADDED LD REF. A NO. | 3-25-65 | | BM | | |
| X2 | ITEM 1 WAS NT129-0940-4 'A' HOLE WAS .161-.164 | 3-26-65 | | BM | | |
| Ø | ORIGINAL RELEASE FOR PRODUCTION | 5/3/67 | Ø | CV | | JHQ |

METAL STAMP TMC PART NO. (MS4413)
1/8 HIGH GOTHIC W/LATEST
REV. LETTER.

OPPOSITE
SIDE
SAME



| HOLES | DESCRIPTION | REQ. |
|-------|----------------|------|
| A | 9/64 DIA. | 4 |
| B | .191-.194 DIA. | 8 |
| C | 15/64 DIA. | 4 |

MOUNT IN **2**
ALL 'B' HOLES

UNLESS OTHERWISE SPECIFIED:

1. USE MATERIAL THICKNESS FOR MAXIMUM RADIUS ON ALL BENDS
2. ALL ANGULAR BENDS 90 DEGREES
3. REMOVE ALL BURRS AND SHARP EDGES
4. MOUNT INSERTS AFTER FINISHING

NOTES

| | | |
|------------|---------------|------------|
| 1 | TSTE-10K | A5010 |
| Q'TY./UNIT | MODEL USED ON | ASS'Y. NO. |
| SCALE 1/2" | CODE A | |

THE CONTENTS OF THIS DRAWING ARE THE EXCLUSIVE PROPERTY OF THE TECHNICAL MATERIEL CORP. ITS UNAUTHORIZED USE OR REPRODUCTION IN WHOLE OR IN PART IS STRICTLY FORBIDDEN.

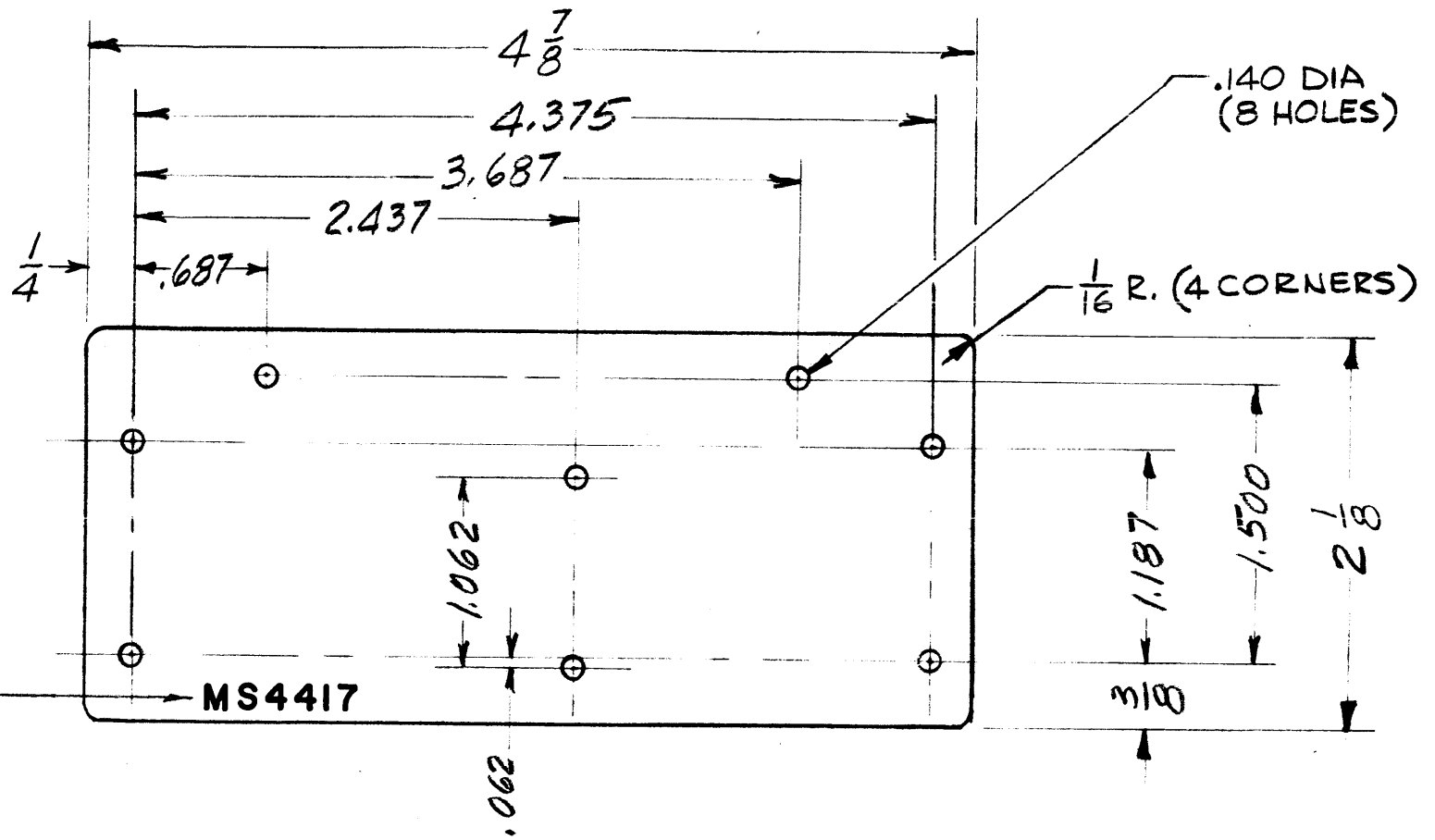
REF: LD 1835

| REQ'D. | ITEM | PART NUMBER | DESCRIPTION | SYMBOL |
|--------|------|--------------|-------------------|--------|
| 8 | 2 | NT 129-632-4 | NUT, PLAIN SPLINE | B |
| | 1 | DELETED | | |

| | | | |
|---|--|--|-----------------|
| F. BUDETTI | | LIST OF MATERIAL | |
| MATERIAL .081 THICK ALUMINUM 5052-H32 | | THE TECHNICAL MATERIEL CORP. MAMARONECK, NEW YORK | |
| FINISH S404 VEL. IRIDITE | | TITLE PLATE, MTG, TOP FAN | |
| UNLESS OTHERWISE SPECIFIED DIMENSIONS ARE IN INCHES AND INCLUDE CHEMICALLY APPLIED OR PLATED FINISHES | | DRAWN SRG | DATE 3-4-65 |
| DECIMALS .X ± .05 .XX ± .01 .XXX ± .005 | | CHECKED JCF | DATE 7/22/65 |
| FRACTIONS ± 1/64 ANGLES ± 0° 30' | | ELECT. DES. JCF | DATE |
| TOLERANCES | | MECH. DES. JCF | DATE |
| | | FINAL APPROVAL <i>[Signature]</i> | |
| | | DATE 5/3/67 | |
| | | MS4413 | |
| | | SHEET | |
| | | REV. LTR. | |

MS 4417

| REVISIONS | | | | | | |
|-----------|---------------------------------|---------|------------|-------|---------------|------|
| SYM | DESCRIPTION | DATE | E.M.N. NO. | DRAFT | CHKD | APPD |
| X | EXP. RELEASE | 3-23-65 | 1 | CL | CL | |
| Ø | ORIGINAL RELEASE FOR PRODUCTION | 3-26-65 | Ø | Ø | | |



METAL STAMP TMC PART NO.
1/8 HIGH GOTHIC.
WITH LATEST REV. LETTER

| REQ'D. | ITEM | PART NUMBER | DESCRIPTION | SYMBOL |
|---|------|-------------------------------|----------------------------------|--------------------------------------|
| LIST OF MATERIAL | | | | |
| MATERIAL | | THE TECHNICAL MATERIEL CORP. | | |
| .062 ALUMINUM 5052 H-32 | | MAMARONECK, NEW YORK | | |
| FINISH | | TITLE | | |
| S404 YEL IRIDITE | | PLATE, FRONT | | |
| UNLESS OTHERWISE SPECIFIED DIMENSIONS ARE IN INCHES AND INCLUDE CHEMICALLY APPLIED OR PLATED FINISHES | | DRAWN C. LANZA | DATE 3-23-65 | FINAL APPROVAL <i>[Signature]</i> |
| DECIMALS .X ± .05 .XX ± .01 .XXX ± .005 | | CHECKED <i>[Signature]</i> | DATE 3-24-65 | DATE 3-24-65 |
| FRACTIONS ± 1/64 ANGLES ± 0° 30' | | ELECT. DES. | MECH. DES. <i>[Signature]</i> | DATE 3-24-65 |
| TOLERANCES | | SHEET | | REV. LTR. |

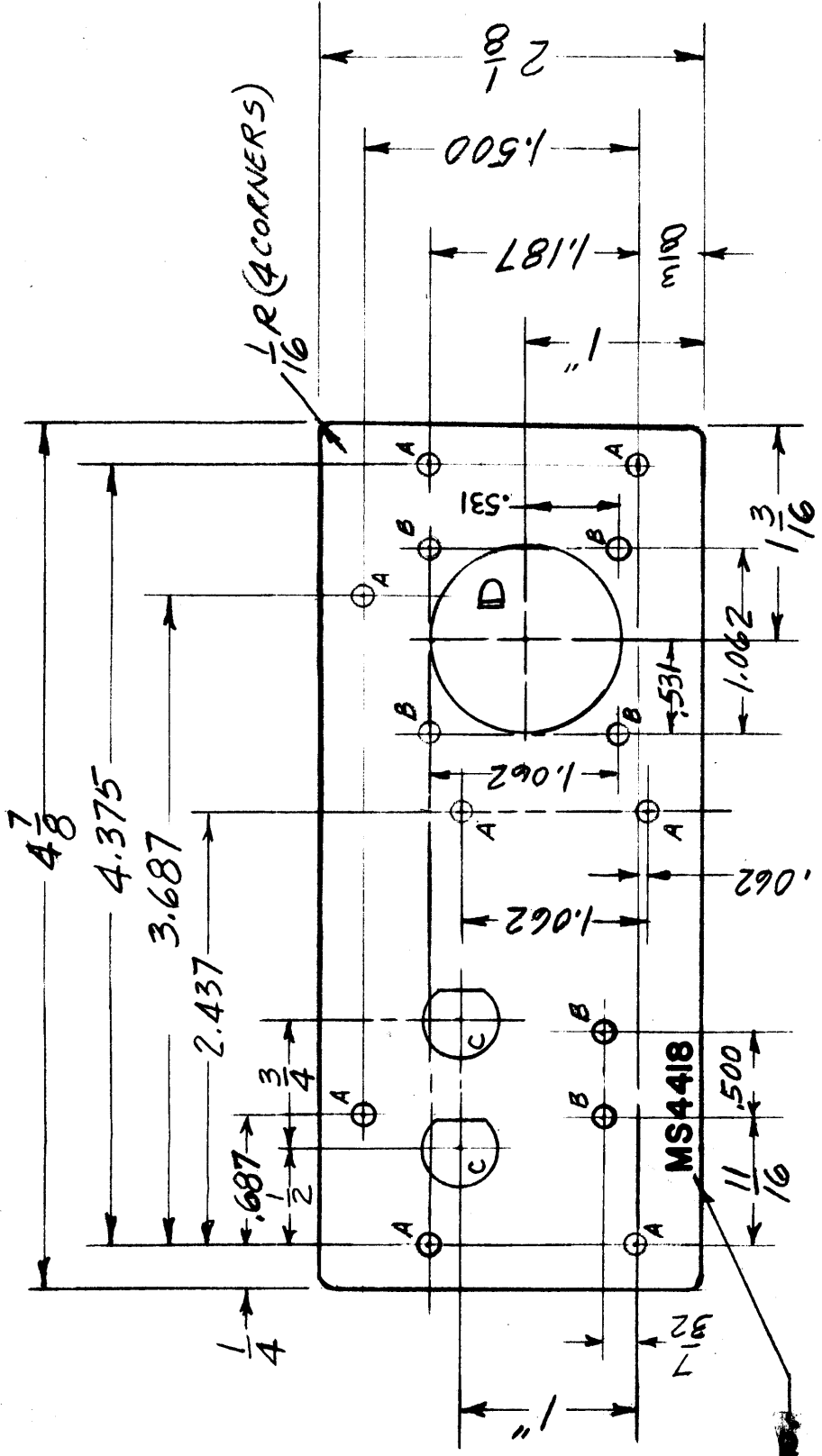
| | | |
|---|---------------|------------|
| 1 | AFCR - 3 | |
| QTY./UNIT | MODEL USED ON | ASS'Y. NO. |
| SCALE Do Not Scale | CODE | |
| THE CONTENTS OF THIS DRAWING ARE THE EXCLUSIVE PROPERTY OF THE TECHNICAL MATERIEL CORP. ITS UNAUTHORIZED USE OR REPRODUCTION IN WHOLE OR IN PART IS STRICTLY FORBIDDEN. | | |

NOTES

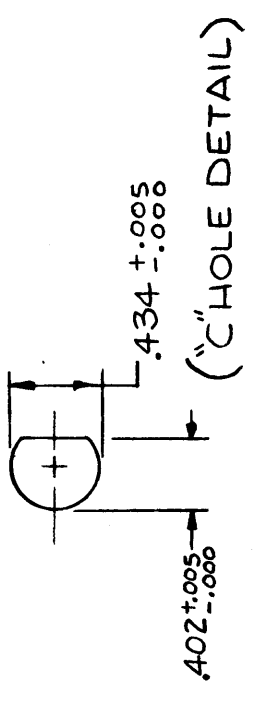
| SYM | | DESCRIPTION | | REVISIONS | |
|---------|------------|-------------|------|-----------|--|
| DATE | E.M.N. NO. | DRAFT | CHKD | APPD | |
| 3-23-64 | 1 | CL | CL | | |
| 3-25-64 | 2 | RU | RU | | |

MS4418

EXP RELEASE
ORIGINAL RELEASE FOR PRODUCTION



| HOLE | DESCRIPTION | REQ. |
|------|-------------|------|
| A | .140 DIA | 8 |
| B | .125 DIA | 6 |
| C | SEE DETAIL | 2 |
| D | 1.062 DIA | 1 |



METAL STAMP TMC PART NO.
1/8 HIGH GOTHIC.
WITH LATEST REV. LETTER

— REAR VIEW SHOWN —

REF LD1817

| REQ'D. | ITEM | PART NUMBER | DESCRIPTION | SYMBOL |
|--------|------|-------------|--|--------|
| | | | LIST OF MATERIAL | |
| | | | MATERIAL .062 ALUMINUM 5052 H-32 | |
| | | | FINISH S404 YEL. IRIDITE | |

| | | |
|--|-----------------|--------------------------------------|
| THE TECHNICAL MATERIEL CORP. MAMARONECK, NEW YORK | | |
| TITLE PLATE, REAR | | |
| DRAWN C. LANZA | DATE | FINAL APPROVAL <i>[Signature]</i> |
| CHECKED <i>[Signature]</i> | DATE | |
| ELECT. DES. | DATE | |
| MECH. DES. <i>[Signature]</i> | DATE 3-25-64 | |

| | | |
|------------------------------------|-----------------------|-----------|
| QTY./UNIT SCALE Do Not Scale | MODEL USED ON CODE | ASSY. NO. |
| | AFCR-3 | |

THE CONTENTS OF THIS DRAWING ARE THE EXCLUSIVE PROPERTY OF THE TECHNICAL MATERIEL CORP. ITS UNAUTHORIZED USE OR REPRODUCTION IN WHOLE OR IN PART IS STRICTLY FORBIDDEN.

NOTES

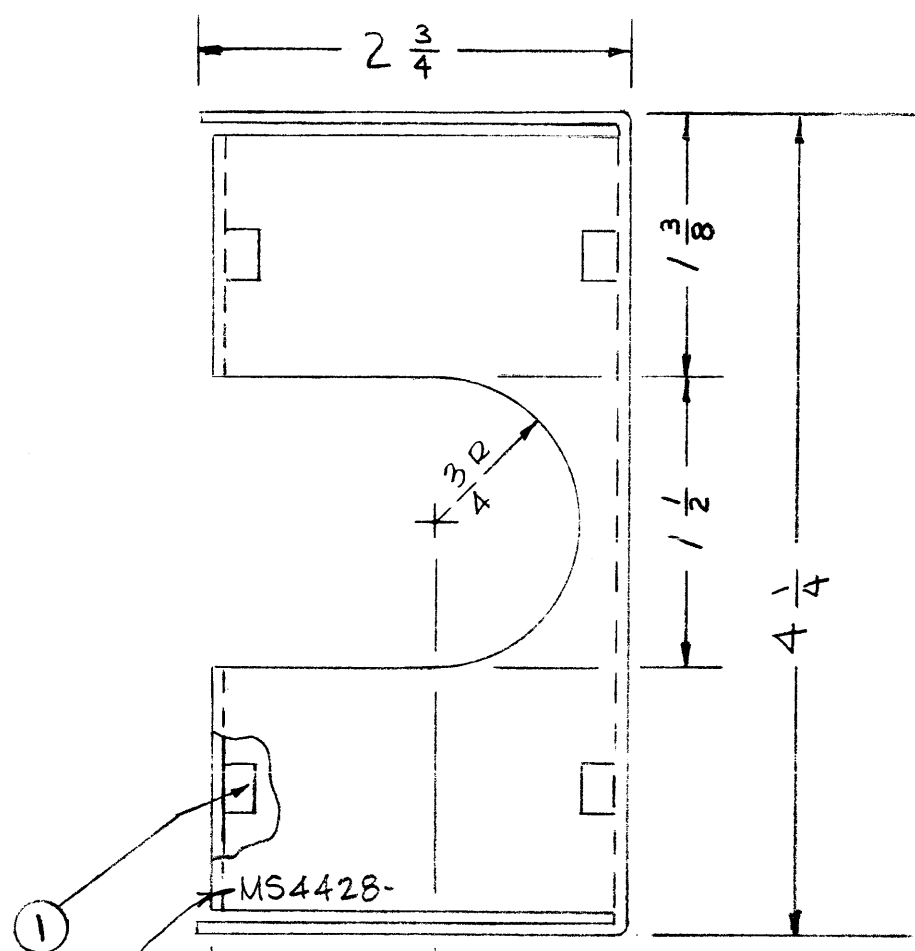
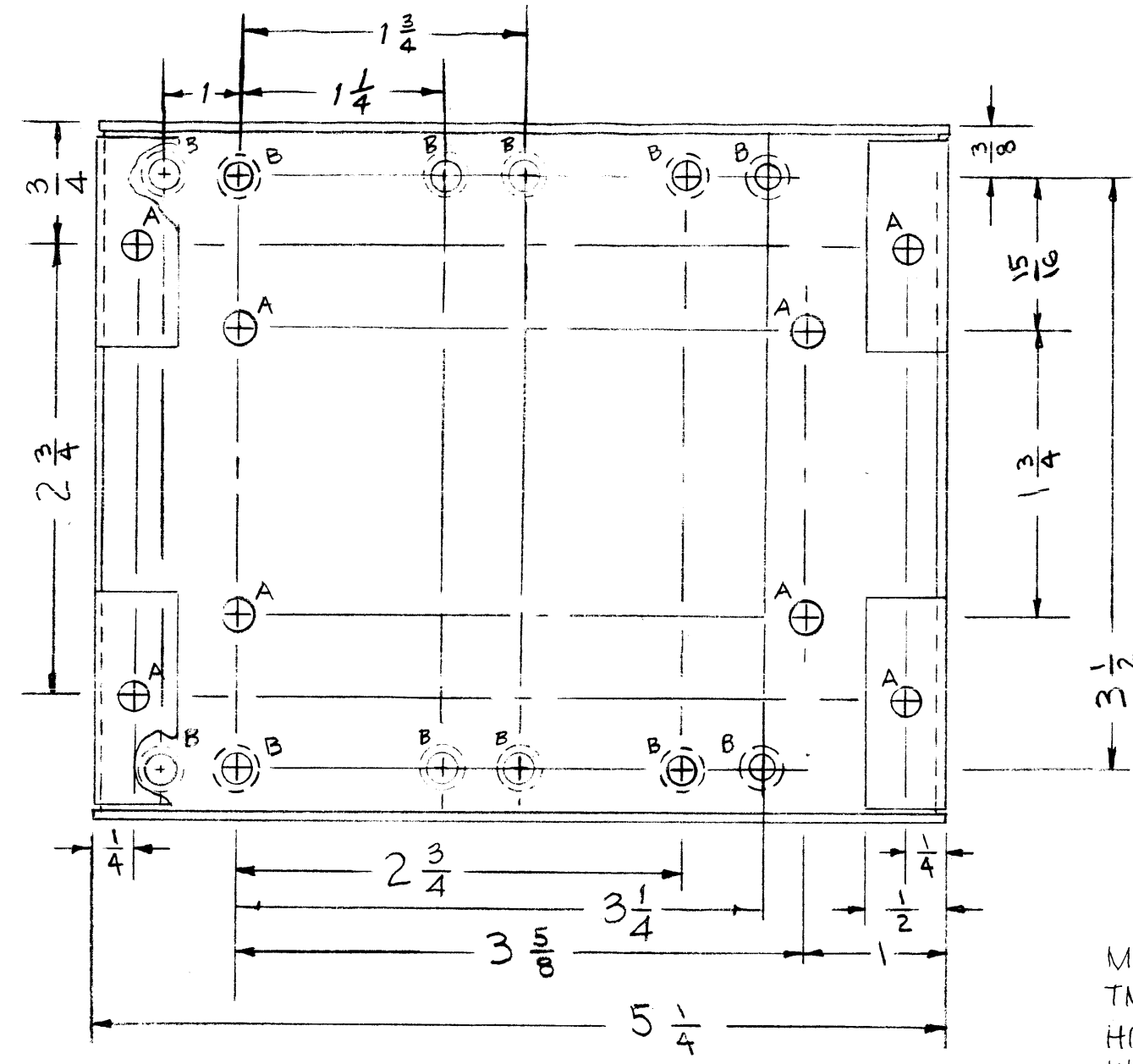
| | |
|---|--|
| UNLESS OTHERWISE SPECIFIED DIMENSIONS ARE IN INCHES AND INCLUDE CHEMICALLY APPLIED OR PLATED FINISHES | FRACIONS ± 1/64 ANGLES ± 0° 30' |
| DECIMALS .XX ± .01 .XXX ± .005 | TOLERANCES |

| | |
|-------------|--|
| MATERIAL | THE TECHNICAL MATERIEL CORP. MAMARONECK, NEW YORK |
| FINISH | S404 YEL. IRIDITE |
| TITLE | PLATE, REAR |
| DRAWN | C. LANZA |
| CHECKED | <i>[Signature]</i> |
| ELECT. DES. | |
| MECH. DES. | <i>[Signature]</i> |
| DATE | 3-25-64 |
| SHEET | |
| REV. LTR. | |

MS4428 A

REVISIONS

| SYM | DESCRIPTION | DATE | E.M.N. NO. | DRAFT | CHKD | APPD |
|-----|--|---------|------------|-------|------|------|
| Ø | ORIGINAL RELEASE FOR PRODUCTION | 4/20/65 | -AA | MS | | |
| A | 6 "B" HOLES ADDED, METAL STAMP (TMC #) ADDED | 8-26-65 | 14728 | EVV | Q178 | |



METAL STAMP
TMC PT. NO V8
HIGH GOTHIC
W/LATEST
REV.
LETTER

OPPOSITE SIDE SAME

A- .191-.194 DIA. (8 REQ.)
B- DRILL + C'SINK FOR 6-32 F.H.S. (12 REQ.)

- UNLESS OTHERWISE SPECIFIED:
1. USE MATERIAL THICKNESS FOR MAXIMUM RADIUS ON ALL BENDS
 2. ALL ANGULAR BENDS 90 DEGREES
 3. REMOVE ALL BURRS AND SHARP EDGES
 4. MOUNT INSERTS AFTER FINISHING

NOTES

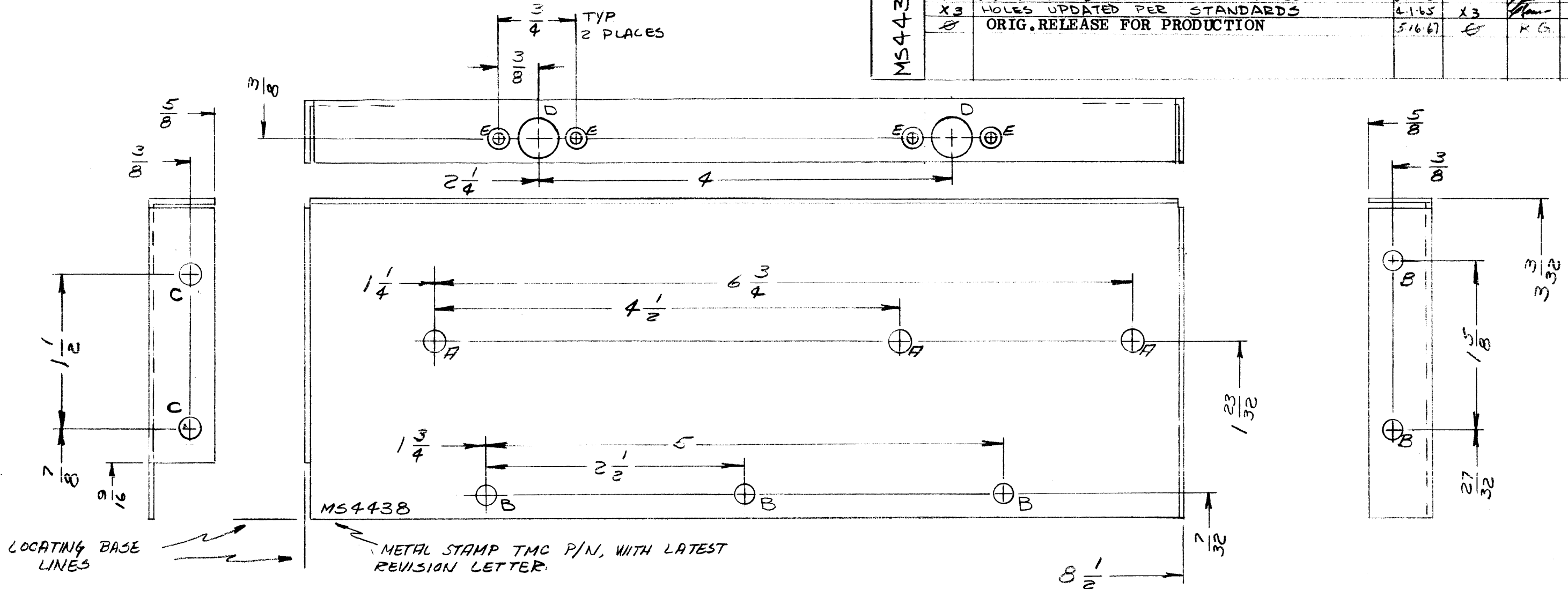
| | | |
|---|---------------|------------|
| 1 | DDR-6M | |
| | DDRR-506 | |
| Q'TY./UNIT | MODEL USED ON | ASS'Y. NO. |
| SCALE | CODE | |
| THE CONTENTS OF THIS DRAWING ARE THE EXCLUSIVE PROPERTY OF THE TECHNICAL MATERIEL CORP. ITS UNAUTHORIZED USE OR REPRODUCTION IN WHOLE OR IN PART IS STRICTLY FORBIDDEN. | | |

| REQ'D. | ITEM | PART NUMBER | DESCRIPTION | SYMBOL |
|--------|------|-------------|--------------------|--------|
| 8 | 1 | NT129-632-4 | NUT, PLAIN, SPLINE | A |

LIST OF MATERIAL

| | | | | |
|---|------------------|--|---------|----------------|
| MATERIAL | .064 ALUMINUM | | | |
| FINISH | S404 YEL IRIDITE | | | |
| UNLESS OTHERWISE SPECIFIED DIMENSIONS ARE IN INCHES AND INCLUDE CHEMICALLY APPLIED OR PLATED FINISHES | | THE TECHNICAL MATERIEL CORP. MAMARONECK, NEW YORK | | |
| TITLE | | CHASSIS, TERMINAL BOARD (RCVR OUTPUT) | | |
| DRAWN | M. STURMER | DATE | 2-26-65 | FINAL APPROVAL |
| CHECKED | Q178 | DATE | 4/20/65 | |
| ELECT. DES. | | DATE | | |
| MECH. DES. | | DATE | 4-20-65 | |
| DECIMALS | | TOLERANCES | | |
| .X ± .05 | | ± 1/64 | | |
| .XX ± .01 | | ANGLES ± 0° 30' | | |
| .XXX ± .005 | | | | |
| SHEET | | | | REV. LTR. |

| REVISIONS | | | | | | |
|-----------|------------------------------------|---------|------------|-------|------|------|
| SYM | DESCRIPTION | DATE | E.M.N. NO. | DRAFT | CHKD | APPD |
| X1 | REDESIGNED | 3-3-65 | X1 | | | W.J. |
| X2 | (2) "F" HOLES ADDED WERE "A" HOLES | 3-24-65 | X2 | | | W.J. |
| X3 | HOLES UPDATED PER STANDARDS | 4-1-65 | X3 | | | |
| Ø | ORIG. RELEASE FOR PRODUCTION | 5-16-67 | Ø | R.G. | | |



LOCATING BASE LINES

METAL STAMP TMC P/N, WITH LATEST REVISION LETTER.

| TMC P/N. | DESCRIPTION | USED ON | ASSY NO | REQ. |
|-----------|-----------------|---------------|---------|------|
| MS4438 -1 | AS SHOWN | RSBA-1/RCSA-1 | | 1 |
| MS4438 -2 | OPP. HAND IDEN. | RSBA-1/RCSA-1 | | 1 |

| HOLE | DESCRIPTION | REQ |
|------|----------------------------------|-----|
| A | 13/64 DIA | 3 |
| B | 11/64 DIA | 5 |
| C | 3/16 DIA | 2 |
| D | 3/8 DIA | 2 |
| E | .108 DIA, C'SINK 82° TO .204 DIA | 4 |

- UNLESS OTHERWISE SPECIFIED:
- USE MATERIAL THICKNESS FOR MAXIMUM RADIUS ON ALL BENDS
 - ALL ANGULAR BENDS 90 DEGREES
 - REMOVE ALL BURRS AND SHARP EDGES
 - MOUNT INSERTS AFTER FINISHING

NOTES

| SEE CHART | | |
|------------|---------------|------------|
| Q'TY./UNIT | MODEL USED ON | ASS'Y. NO. |
| SCALE 1:1 | CODE A | |

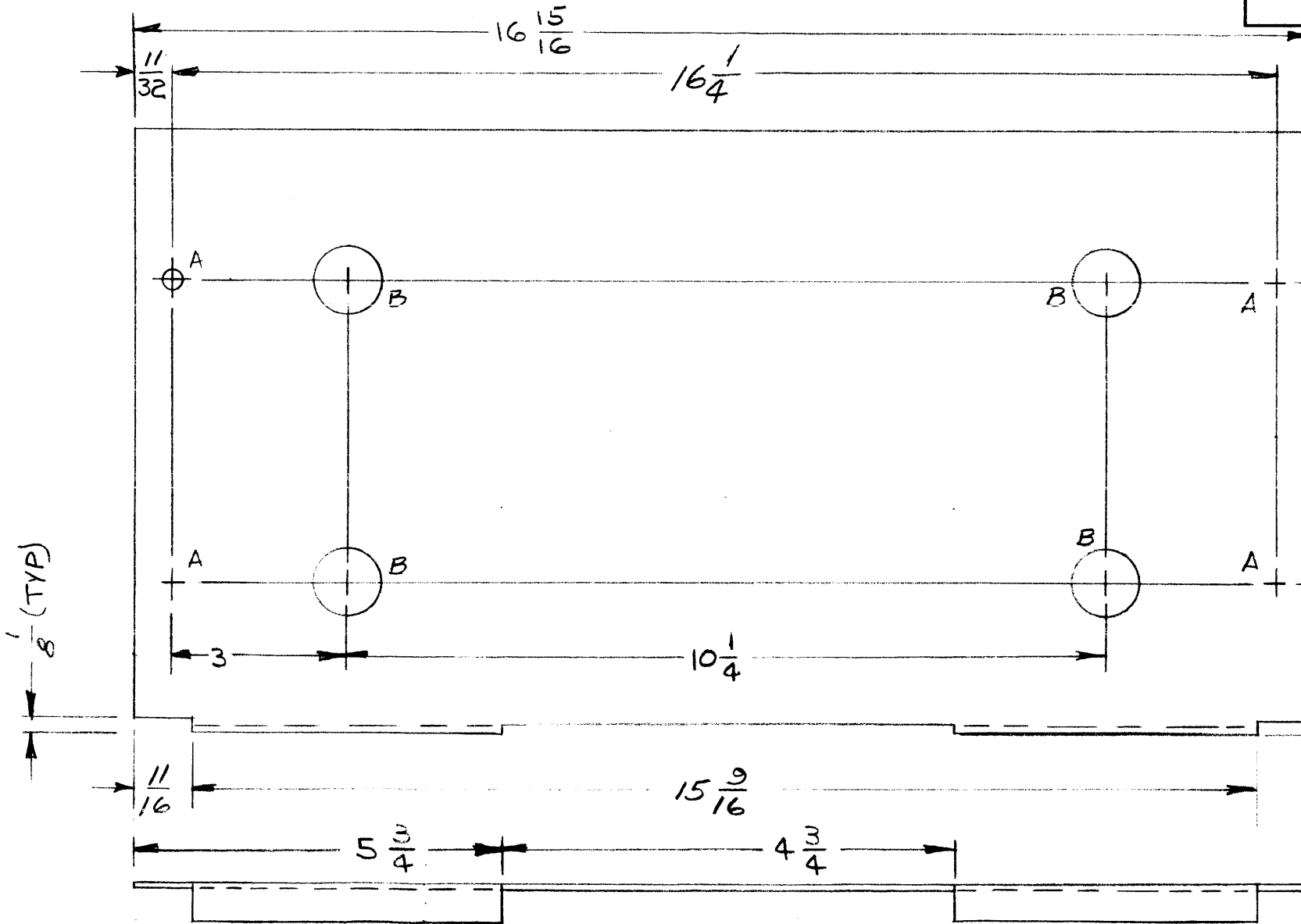
THE CONTENTS OF THIS DRAWING ARE THE EXCLUSIVE PROPERTY OF THE TECHNICAL MATERIEL CORP. ITS UNAUTHORIZED USE OR REPRODUCTION IN WHOLE OR IN PART IS STRICTLY FORBIDDEN.

| REQ'D. | ITEM | PART NUMBER | DESCRIPTION | SYMBOL |
|---|------|-------------|---|-------------|
| EATON LIST OF MATERIAL FORMALLY E3162B-6 | | | | |
| MATERIAL .062, ALUMINUM 5052-H32 | | | THE TECHNICAL MATERIEL CORP. MAMARONECK, NEW YORK | |
| FINISH 5404, YEL. IRIDITE | | | TITLE PLATE, SIDE - LEFT & RIGHT | |
| UNLESS OTHERWISE SPECIFIED DIMENSIONS ARE IN INCHES AND INCLUDE CHEMICALLY APPLIED OR PLATED FINISHES | | | DRAWN <i>[Signature]</i> | DATE 3-3-65 |
| | | | CHECKED | DATE |
| DECIMALS .X ± .05 .XX ± .01 .XXX ± .005 | | | ELECT. DES. | DATE |
| FRACTIONS ± 1/64 ANGLES ± 0° 30' | | | MECH. DES. | DATE |
| | | | SHEET MS4438 | |
| | | | REV. LTR. Ø | |

MS4441

REVISIONS

| SYM | DESCRIPTION | DATE | E.M.N. NO. | DRAFT | CHKD | APPD |
|-----|------------------------------|---------|------------|--------------------|------|------|
| X | EXPER. RELEASE | 2-25-65 | X | <i>[Signature]</i> | | |
| Ø | ORIG. RELEASE FOR PRODUCTION | 5-16-67 | Ø | R.S. | | |



| HOLE | DESCRIPTION | REQ |
|------|-------------|-----|
| A | 1/4 DIA. | 4 |
| B | 1/2 DIA. | 4 |

① MOUNT IN ALL "A" HOLES AS SHOWN
②

METAL STAMP TMC PART NO, WITH LATEST REVISION LETTER, ON REAR.

UNLESS OTHERWISE SPECIFIED:

1. USE MATERIAL THICKNESS FOR MAXIMUM RADIUS ON ALL BENDS
2. ALL ANGULAR BENDS 90 DEGREES
3. REMOVE ALL BURRS AND SHARP EDGES
4. MOUNT INSERTS AFTER FINISHING

NOTES

| Q'TY./UNIT | MODEL USED ON | ASS'Y. NO. |
|---|----------------------|------------|
| 1 | RC SA-1 | |
| 1 | RS BA-1 | |
| SCALE | CODE | |
| <i>[Handwritten]</i> | <i>[Handwritten]</i> | |
| THE CONTENTS OF THIS DRAWING ARE THE EXCLUSIVE PROPERTY OF THE TECHNICAL MATERIEL CORP. ITS UNAUTHORIZED USE OR REPRODUCTION IN WHOLE OR IN PART IS STRICTLY FORBIDDEN. | | |

| REQ'D. | ITEM | PART NUMBER | DESCRIPTION | SYMBOL |
|--------|------|-------------|-----------------|--------|
| 4 | 2 | FS109-3 | RING, RETAINING | A |
| 4 | 1 | FS110-1 | STUD, SLOTTED | A |

F. EATON LIST OF MATERIAL FORMALLY E3162B-9

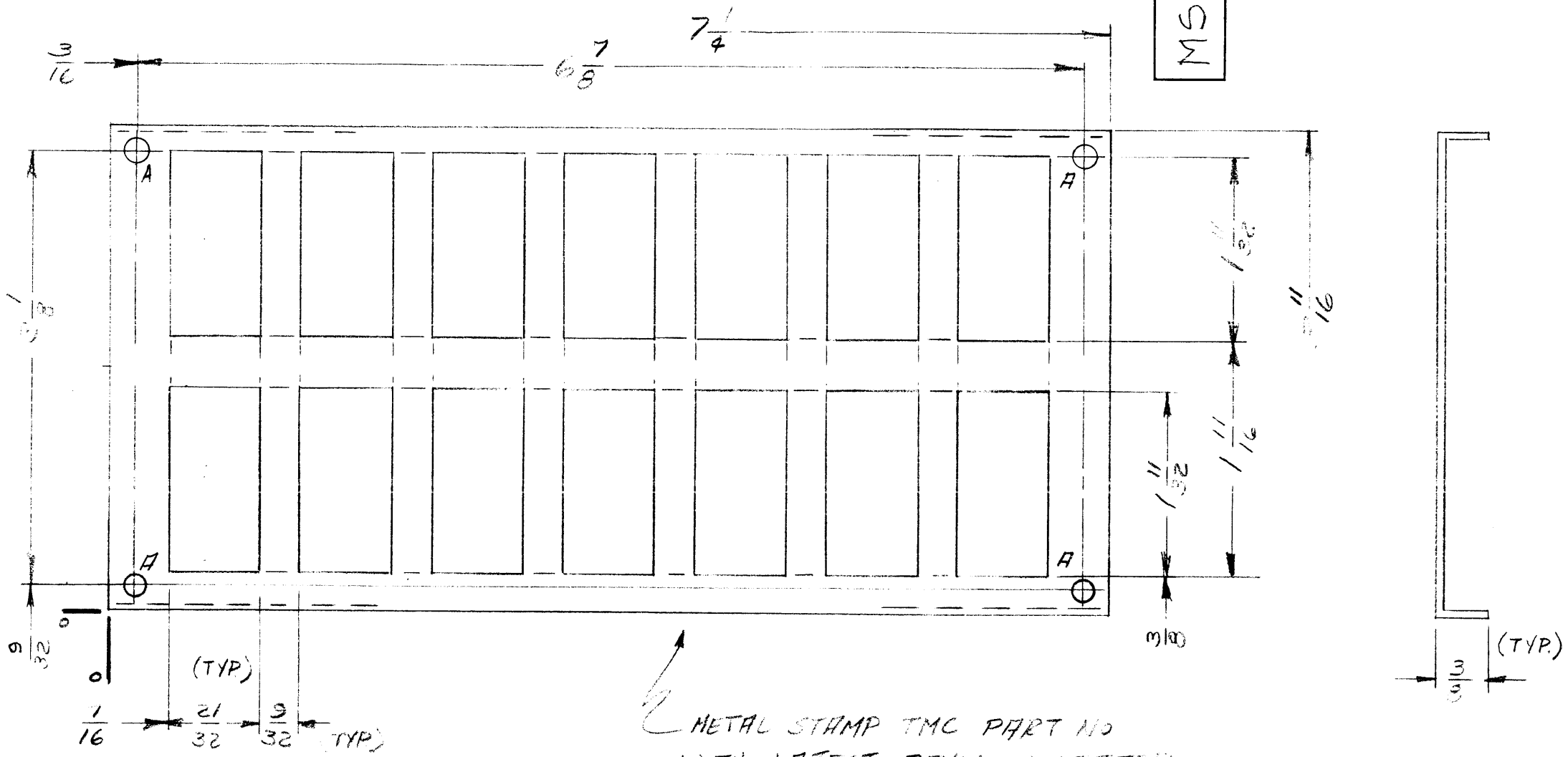
| | | |
|----------|---------------------------|--|
| MATERIAL | .062 ALUMINUM 5052-H32 | THE TECHNICAL MATERIEL CORP. MAMARONECK, NEW YORK |
| FINISH | 5404 YELLOW IRIDITE | TITLE COVER, TOP |

| | | | | | |
|---|------------|-----------------------------|-----------------|------------------------------------|----------------------------|
| UNLESS OTHERWISE SPECIFIED DIMENSIONS ARE IN INCHES AND INCLUDE CHEMICALLY APPLIED OR PLATED FINISHES | | DRAWN <i>[Signature]</i> | DATE 2-25-65 | FINAL APPROV <i>[Signature]</i> | DATE <i>[Signature]</i> |
| DECIMALS .X ± .05 .XX ± .01 .XXX ± .005 | TOLERANCES | ELECT. DES. | DATE | MS4441 | Ø |
| FRACTIONS ± 1/64 ANGLES ± 0° 30' | | MECH. DES. | DATE | | REV. LTR. |

MS4442

REVISIONS

| SYM | DESCRIPTION | DATE | E.M.N. NO. | DRAFT | CHKD | APPD |
|-----|------------------------------|---------|------------|-------|------|------|
| X1 | REDESIGNED COMPLETELY | 2-19-65 | X | | | |
| Ø | ORIG. RELEASE FOR PRODUCTION | 5/16/67 | G | PG | | |



HOLE
A - 5/32 DIA - 4 REQ

METAL STAMP TMC PART NO
WITH LATEST REVISION LETTER
ON BOTTOM

REF: LD1826

UNLESS OTHERWISE SPECIFIED:

1. USE MATERIAL THICKNESS FOR MAXIMUM RADIUS ON ALL BENDS
2. ALL ANGULAR BENDS 90 DEGREES
3. REMOVE ALL BURRS AND SHARP EDGES
4. MOUNT INSERTS AFTER FINISHING

NOTES

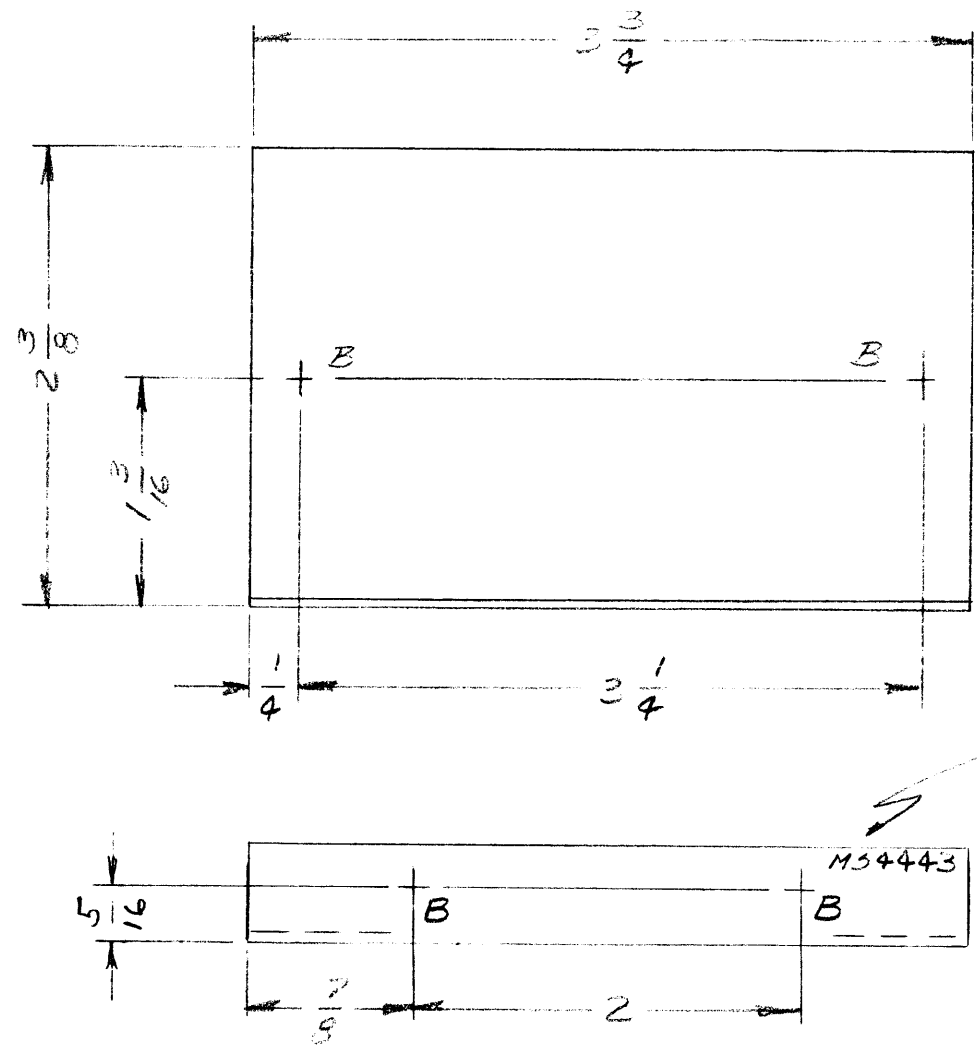
| | | |
|---------------|---------------|------------|
| Q'TY./UNIT | MODEL USED ON | ASS'Y. NO. |
| SCALE NONE | CODE F | |

THE CONTENTS OF THIS DRAWING ARE THE EXCLUSIVE PROPERTY OF THE TECHNICAL MATERIEL CORP. ITS UNAUTHORIZED USE OR REPRODUCTION IN WHOLE OR IN PART IS STRICTLY FORBIDDEN.

| REQ'D. | ITEM | PART NUMBER | DESCRIPTION | SYMBOL |
|---|------|--|---|--------|
| EATON LIST OF MATERIAL FORMALLY E3162B-4 | | | | |
| MATERIAL | | THE TECHNICAL MATERIEL CORP. MAMARONECK, NEW YORK | | |
| FINISH | | TITLE | | |
| .062, ALUMINUM 5052-H32 | | PLATE, MTG, RELAY | | |
| S404 YELLOW TRIDITE | | | | |
| UNLESS OTHERWISE SPECIFIED DIMENSIONS ARE IN INCHES AND INCLUDE CHEMICALLY APPLIED OR PLATED FINISHES | | | | |
| DRAWN / / | | DATE 2-19-65 | FINAL APPROVAL / / | |
| CHECKED | | DATE | DATE | |
| ELECT. DES. | | DATE | MS4442 | |
| MECH. DES. | | DATE | Ø | |
| DECIMALS .X ± .05 .XX ± .01 .XXX ± .005 | | | FRACTIONS ± 1/64 ANGLES ± 0° 30' | |
| TOLERANCES | | | SHEET | |
| | | | REV. LTR. | |

| SYM | DESCRIPTION | DATE | E.M.N. NO. | DRAFT | CHKD | APPD |
|-----|---|---------|------------|-------|------|------|
| | | | | | | |
| X | EXPER. RELEASE | 2-17-65 | X | | | |
| X1 | (2) "A" HOLES, 3/16 DIA. DELETED. (2) "B" HOLES ADDED, BOTTOM LIP DIM 5/16 WAS 1/4 | 4-12-65 | X1 | | J.M. | W.J. |
| X | CRIS RELEASE FOR PRODUCTION | 5-16-67 | E | PG | | |

MS4443



HOLES

B - 11/64 DIA - 2 HOLES

METAL STAMP TMC FORM, W/ LATEST REVISION LETTER

UNLESS OTHERWISE SPECIFIED:

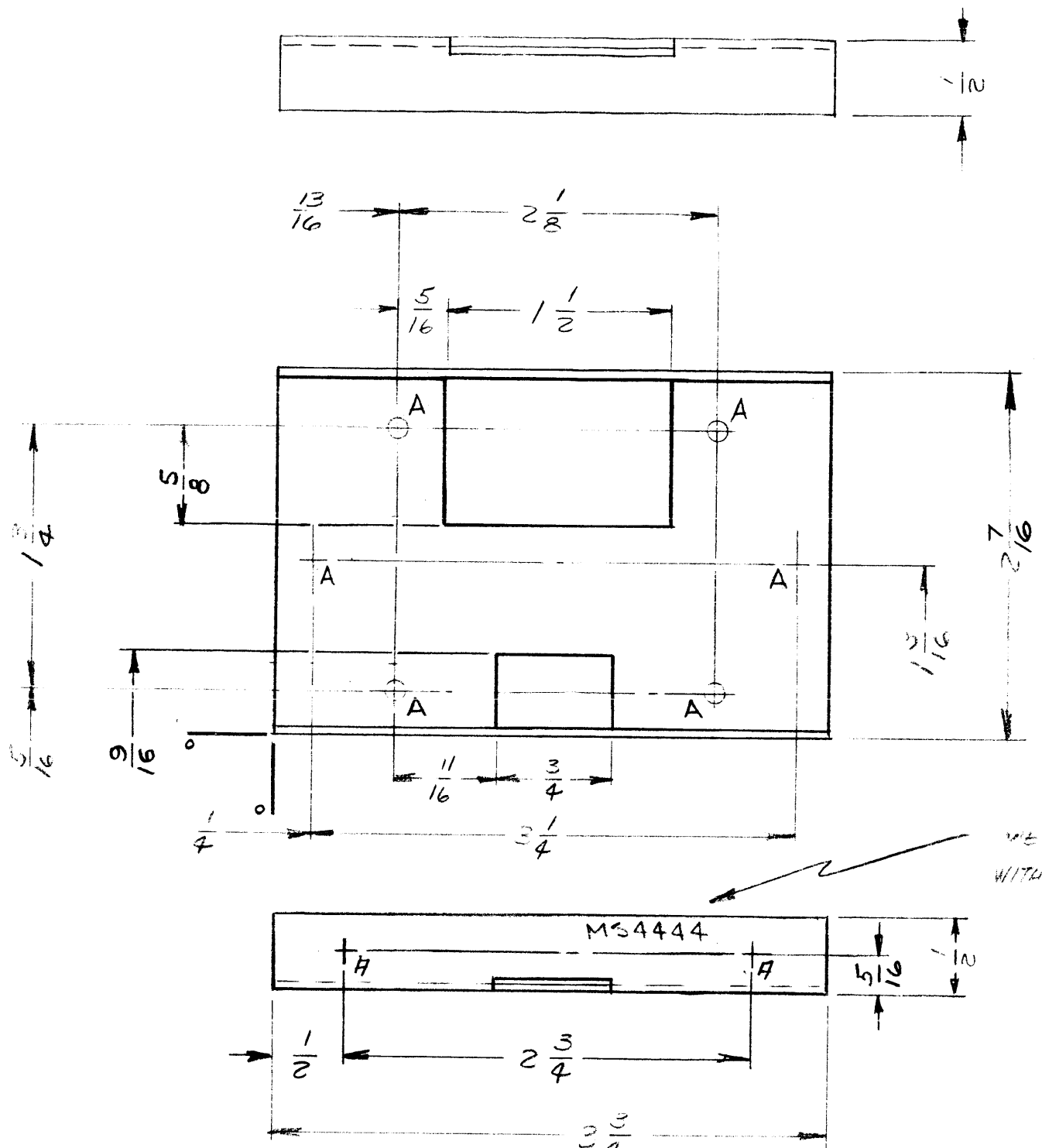
1. USE MATERIAL THICKNESS FOR MAXIMUM RADIUS ON ALL BENDS
2. ALL ANGULAR BENDS 90 DEGREES
3. REMOVE ALL BURRS AND SHARP EDGES
4. MOUNT INSERTS AFTER FINISHING

NOTES

| Q'TY./UNIT | MODEL USED ON | ASS'Y. NO. |
|------------|---------------|------------|
| 1 | RCSA-1 | |
| 1 | RSBA-1 | |
| SCALE 1:1 | CODE H | |

THE CONTENTS OF THIS DRAWING ARE THE EXCLUSIVE PROPERTY OF THE TECHNICAL MATERIEL CORP. ITS UNAUTHORIZED USE OR REPRODUCTION IN WHOLE OR IN PART IS STRICTLY FORBIDDEN.

| REQ'D. | ITEM | PART NUMBER | DESCRIPTION | SYMBOL |
|---|------|--|------------------|-------------------------------|
| EATON | | | LIST OF MATERIAL | FORMALLY E3162B-2 |
| MATERIAL | | THE TECHNICAL MATERIEL CORP. MAMARONECK, NEW YORK | | |
| | | .081 ALUMINIUM 5052-H32 | | |
| FINISH | | TITLE BRACKET, MTR. TRANSFORMER (FRONT) | | |
| | | 3409 YELLOW TROPITE | | |
| UNLESS OTHERWISE SPECIFIED DIMENSIONS ARE IN INCHES AND INCLUDE CHEMICALLY APPLIED OR PLATED FINISHES | | DRAWN [Signature] | DATE 2-17-65 | FINAL APPROVAL [Signature] |
| | | CHECKED | DATE | DATE 5/12/67 |
| | | ELECT. DES. | DATE | MS4443 |
| | | MECH. DES. | DATE | Ø |
| | | SHEET | | REV. LTR. |



| SYM | DESCRIPTION | DATE | E.M.N. NO. | DRAFT | CHKD | APPD |
|-----|---------------------------------|---------|------------|-------|------|------|
| | | | | | | |
| X | ENTER RELEASE | 2-19-65 | X | 4/1 | | |
| X1 | TOP LIP ADDED | 3-25-65 | X1 | 4/2 | | W.J. |
| X2 | ON BOTTOM LIP, DIM 5/16 WAS 1/4 | 4-12-65 | X2 | 4/3 | J.M. | W.J. |
| Ø | ORIG RELEASE FOR PRODUCTION | 5-16-67 | Ø | 4/3 | | |

HOLES
 A → 11/64 DIA. → 8 REQ.

- UNLESS OTHERWISE SPECIFIED:
1. USE MATERIAL THICKNESS FOR MAXIMUM RADIUS ON ALL BENDS
 2. ALL ANGULAR BENDS 90 DEGREES
 3. REMOVE ALL BURRS AND SHARP EDGES
 4. MOUNT INSERTS AFTER FINISHING

WITH STAMP THE H/1 WITH LATEST REVISION LETTER

NOTES

| | | |
|------------|---------------|------------|
| 1 | RCSA-1 | |
| | RCSA-1 | |
| Q'TY./UNIT | MODEL USED ON | ASS'Y. NO. |
| SCALE 1:1 | CODE 11 | |

THE CONTENTS OF THIS DRAWING ARE THE EXCLUSIVE PROPERTY OF THE TECHNICAL MATERIEL CORP. ITS UNAUTHORIZED USE OR REPRODUCTION IN WHOLE OR IN PART IS STRICTLY FORBIDDEN.

| REQ'D. | ITEM | PART NUMBER | DESCRIPTION | SYMBOL |
|--|------|-------------|--|--------|
| EATON LIST OF MATERIAL FORMALLY E3162B-3 | | | | |
| MATERIAL | | | THE TECHNICAL MATERIEL CORP. MAMARONECK, NEW YORK | |
| .081 ALUMINUM 5052-H32 | | | TITLE BRACKET, MTG, TRANSFORMER (REAR) | |
| FINISH | | | DRAWN | |
| 5404 YEL. IRIDITE | | | DATE 2-19-65 | |
| UNLESS OTHERWISE SPECIFIED | | | FINAL APPROVAL | |
| DIMENSIONS ARE IN INCHES AND INCLUDE | | | DATE 5/14/67 | |
| CHEMICALLY APPLIED OR PLATED FINISHES | | | SHEET | |
| DECIMALS | | | ELECT. DES. | |
| .X ± .05 | | | DATE | |
| .XX ± .01 | | | MECH. DES. | |
| .XXX ± .005 | | | DATE | |
| TOLERANCES | | | SHEET | |
| ± 1/64 | | | REV. LTR. | |
| ANGLES | | | | |
| ± 0° 30' | | | | |

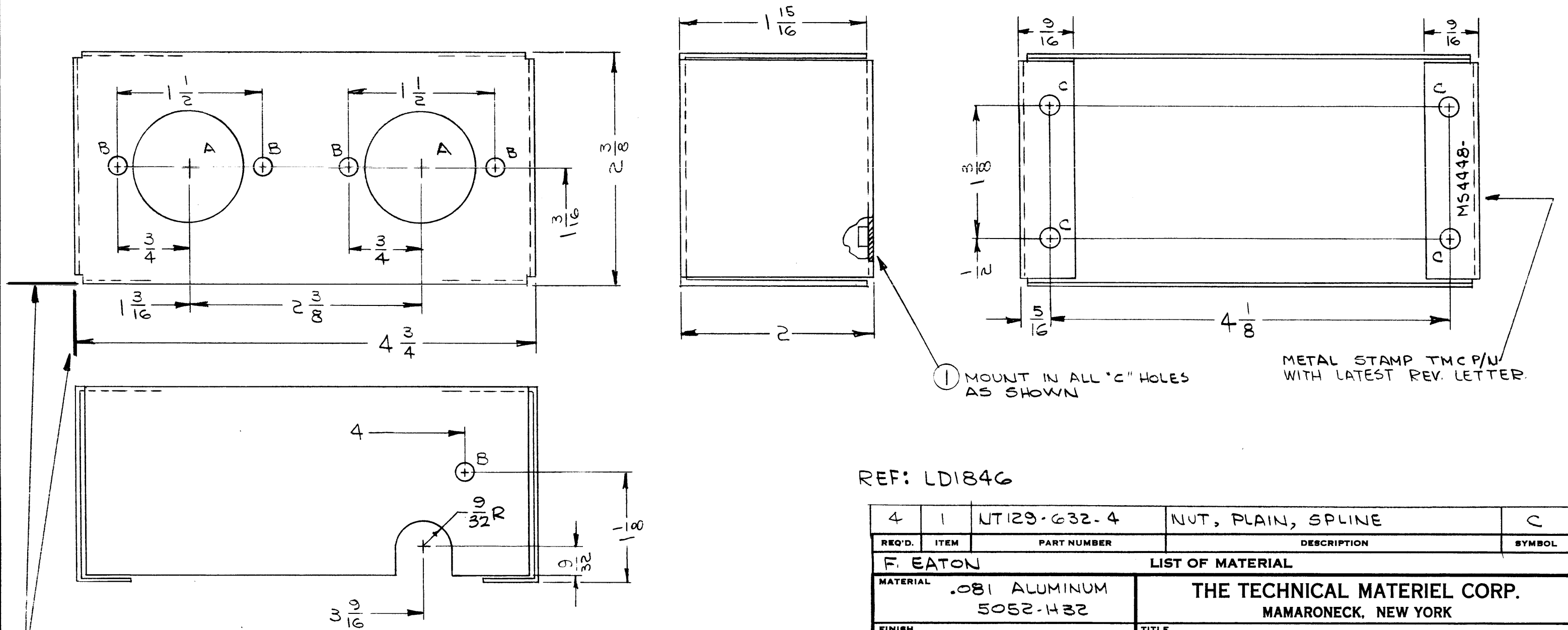
| HOLE | DESCRIPTION | REQ |
|------|----------------|-----|
| A | 1-1/8 DIA | 2 |
| B | 11/64 DIA | 5 |
| C | .191-.194 DIA. | 4 |

UNLESS OTHERWISE SPECIFIED:

1. USE MATERIAL THICKNESS FOR MAXIMUM RADIUS ON ALL BENDS
2. ALL ANGULAR BENDS 90 DEGREES
3. REMOVE ALL BURRS AND SHARP EDGES
4. MOUNT INSERTS AFTER FINISHING

| SYM | DESCRIPTION | DATE | E.M.N. NO. | DRAFT | CHKD | APPD | REVISIONS | |
|-----|---------------------------------|---------|------------|-------|------|------|-----------|--|
| | | | | | | | | |
| Ø | ORIGINAL RELEASE FOR PRODUCTION | 4/27/65 | | | | | | |

MS4448



LOCATING BASE LINES

REF: LD1846

| 4 | 1 | NT129-632-4 | NUT, PLAIN, SPLINE | C |
|---|------|-------------|--|---|
| REQ'D. | ITEM | PART NUMBER | DESCRIPTION | SYMBOL |
| F. EATON LIST OF MATERIAL | | | | |
| MATERIAL .081 ALUMINUM 5052-H32 | | | THE TECHNICAL MATERIEL CORP. MAMARONECK, NEW YORK | |
| FINISH S404 YEL. IRIDITE | | | TITLE CHASSIS, RELAY MTG. | |
| UNLESS OTHERWISE SPECIFIED DIMENSIONS ARE IN INCHES AND INCLUDE CHEMICALLY APPLIED OR PLATED FINISHES | | | DRAWN <i>[Signature]</i> DATE 4-26-65 CHECKED <i>[Signature]</i> DATE 4/27/65 ELECT. DES. DATE MECH. DES. <i>[Signature]</i> DATE | FINAL APPROVAL <i>[Signature]</i> DATE 4/28/65 MS4448 Ø SHEET REV. LTR. |

NOTES

THE CONTENTS OF THIS DRAWING ARE THE EXCLUSIVE PROPERTY OF THE TECHNICAL MATERIEL CORP. ITS UNAUTHORIZED USE OR REPRODUCTION IN WHOLE OR IN PART IS STRICTLY FORBIDDEN.

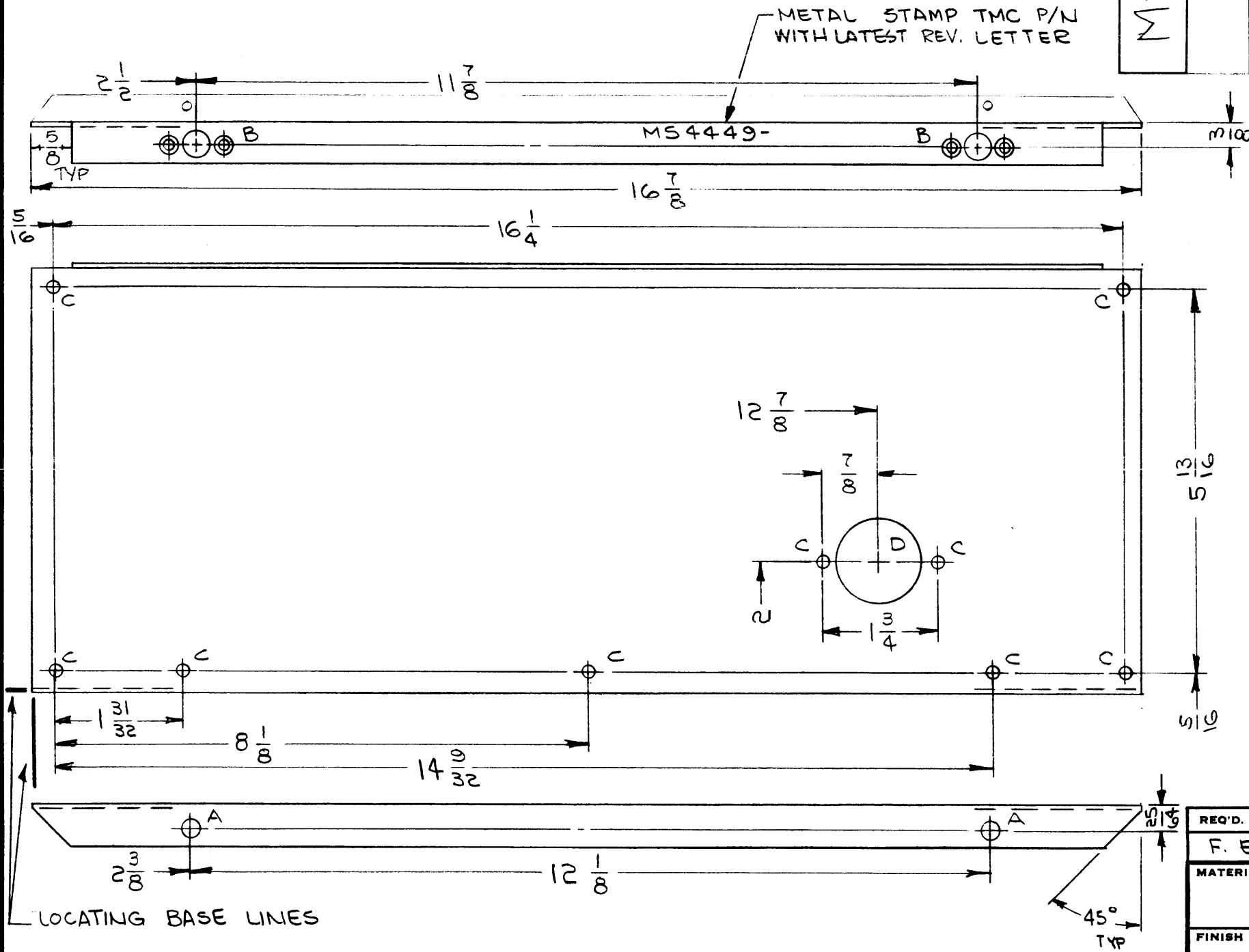
| 1 | RTTA-1 | |
|------------|---------------|------------|
| Q'TY./UNIT | MODEL USED ON | ASS'Y. NO. |
| SCALE 1:1 | CODE A | |

UNLESS OTHERWISE SPECIFIED:

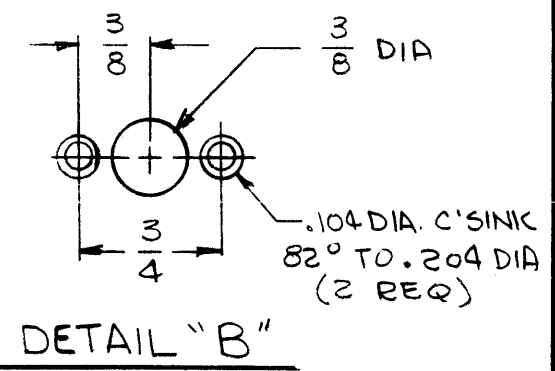
1. USE MATERIAL THICKNESS FOR MAXIMUM RADIUS ON ALL BENDS
2. ALL ANGULAR BENDS 90 DEGREES
3. REMOVE ALL BURRS AND SHARP EDGES
4. MOUNT INSERTS AFTER FINISHING

| SYM | DESCRIPTION | REVISIONS | | | | |
|-----|---------------------------------|-----------|------------|-------|------|------|
| | | DATE | E.M.N. NO. | DRAFT | CHKD | APPD |
| Ø | ORIGINAL RELEASE FOR PRODUCTION | 4/27/65 | | | | |

MS4449



| HOLE | DESCRIPTION | REQ. |
|------|-------------|------|
| A | 1/4 DIA | 2 |
| B | SEE DETAIL | 2 |
| C | 11/64 DIA | Ø |
| D | 1-1/4 DIA. | 1 |



REF: LD1845

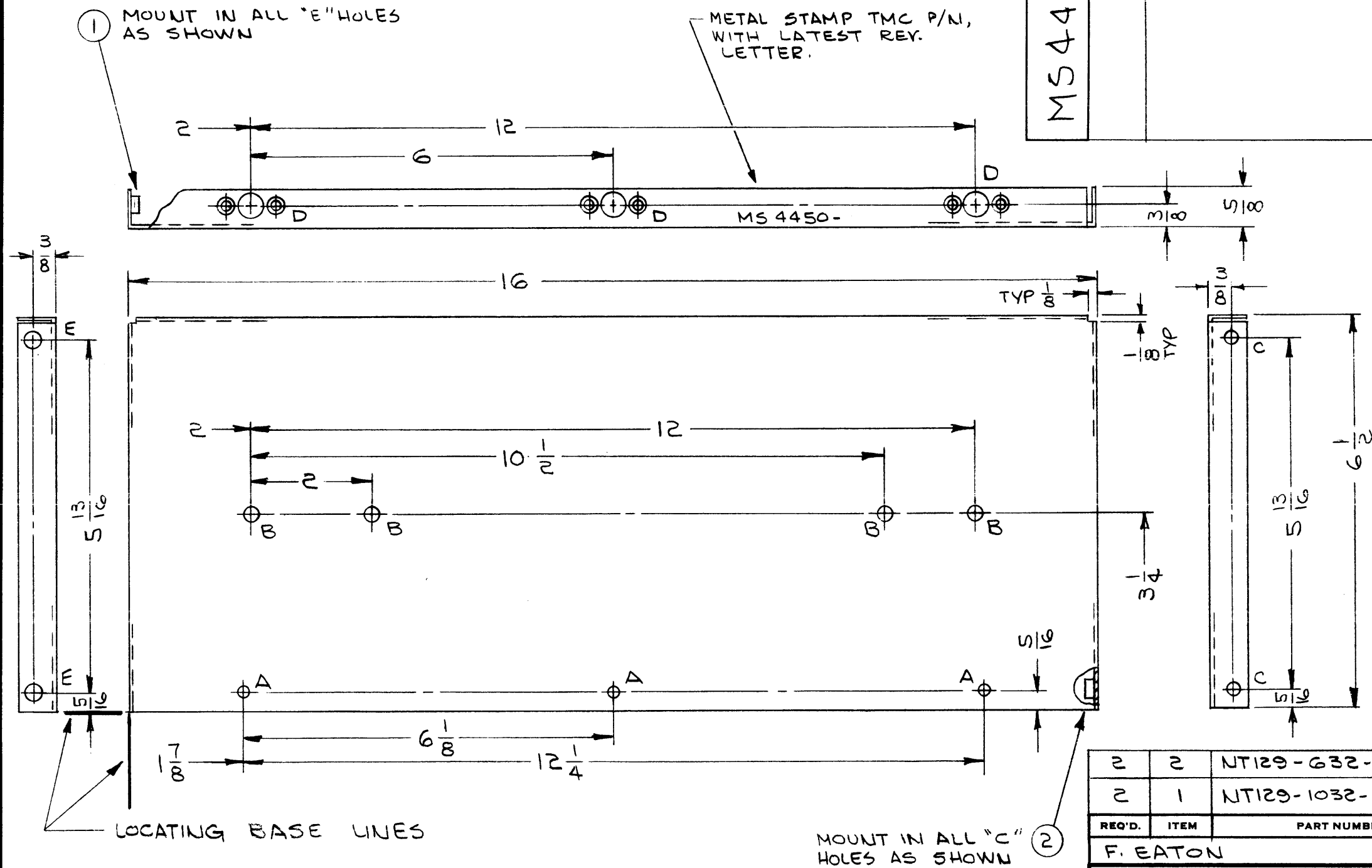
| REQ'D. | ITEM | PART NUMBER | DESCRIPTION | SYMBOL |
|---|------|-------------|---|----------------|
| F. EATON LIST OF MATERIAL | | | | |
| MATERIAL | | | THE TECHNICAL MATERIEL CORP. MAMARONECK, NEW YORK | |
| .081 ALUMINUM 5052-H32 | | | | |
| FINISH | | | TITLE | |
| S404 - YEL. IRIDITE | | | PLATE, REAR | |
| UNLESS OTHERWISE SPECIFIED DIMENSIONS ARE IN INCHES AND INCLUDE CHEMICALLY APPLIED OR PLATED FINISHES | | | DRAWN | DATE |
| | | | 4/26/65 | FINAL APPROVAL |
| DECIMALS .X ± .05 .XX ± .01 .XXX ± .005 | | | CHECKED | DATE |
| | | | 4/27/65 | DATE |
| FRACTIONS ± 1/64 ANGLES ± 0° 30' | | | ELECT. DES. | DATE |
| | | | DATE | DATE |
| TOLERANCES | | | MECH. DES. | DATE |
| | | | DATE | DATE |

| | | |
|---|---------------|------------|
| 1 | RTTA-1 | |
| Q'TY./UNIT | MODEL USED ON | ASS'Y. NO. |
| SCALE | CODE | |
| 1:2 | A | |
| THE CONTENTS OF THIS DRAWING ARE THE EXCLUSIVE PROPERTY OF THE TECHNICAL MATERIEL CORP. ITS UNAUTHORIZED USE OR REPRODUCTION IN WHOLE OR IN PART IS STRICTLY FORBIDDEN. | | |

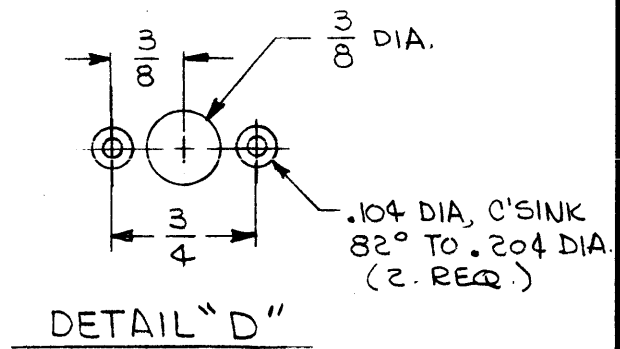
NOTES

| TMC PART NO. | DESCRIPTION |
|--------------|-------------------------|
| MS4450-1 | AS SHOWN |
| MS4450-2 | OPPOSITE HAND IDENTICAL |

| SYM | DESCRIPTION | REVISIONS | | | | |
|-----|---------------------------------|-----------|------------|-------|------|------|
| | | DATE | E.M.N. NO. | DRAFT | CHKD | APPD |
| Ø | ORIGINAL RELEASE FOR PRODUCTION | 4/27/65 | AA | | | |



| HOLE | DESCRIPTION | REQ. |
|------|---------------|------|
| A | 5/32 DIA | 3 |
| B | 15/64 DIA | 4 |
| C | .191-.194 DIA | 2 |
| D | SEE DETAIL | 3 |
| E | .250-.253 DIA | 2 |



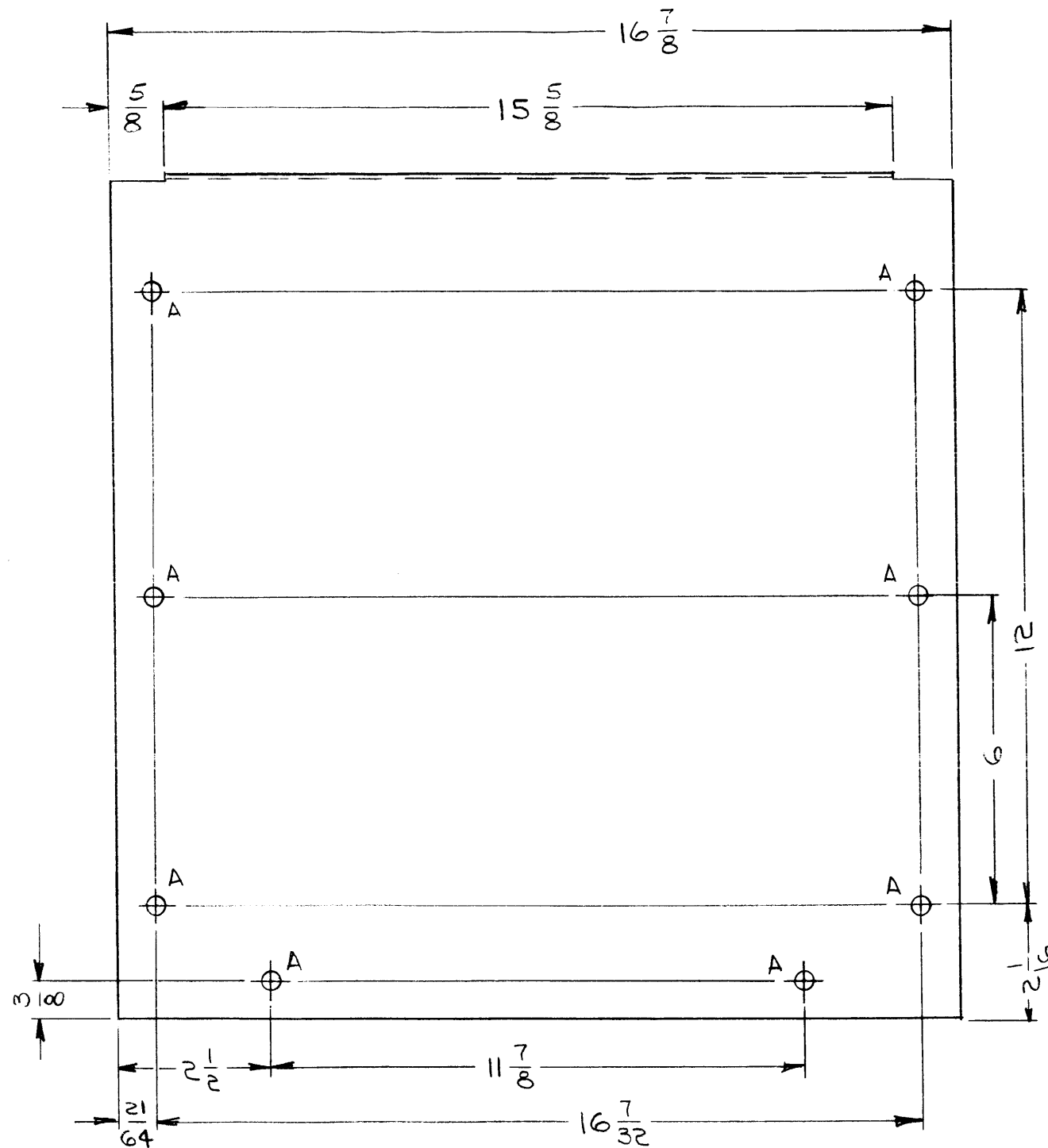
| REQ'D. | ITEM | PART NUMBER | DESCRIPTION | SYMBOL |
|--------|------|--------------|--------------------|--------|
| 2 | 2 | NT129-632-4 | NUT, PLAIN, SPLINE | C |
| 2 | 1 | NT129-1032-4 | NUT, PLAIN, SPLINE | E |

| F. EATON | | LIST OF MATERIAL | |
|---|--|---|--|
| MATERIAL .081 ALUMINUM 5052-H32 | | THE TECHNICAL MATERIEL CORP. MAMARONECK, NEW YORK | |
| FINISH S404-YEL. IRIDITE | | TITLE PLATE, SIDE - LEFT & RIGHT | |
| UNLESS OTHERWISE SPECIFIED DIMENSIONS ARE IN INCHES AND INCLUDE CHEMICALLY APPLIED OR PLATED FINISHES | | DRAWN <i>[Signature]</i> DATE 4-26-65 | FINAL APPROVAL <i>[Signature]</i> DATE 4/28/65 |
| DECIMALS .X ± .05 .XX ± .01 .XXX ± .005 | | CHECKED <i>[Signature]</i> DATE 4/27/65 | MS4450 |
| FRACTIONS ± 1/64 ANGLES ± 0° 30' | | ELECT. DES. | MECH. DES. <i>[Signature]</i> DATE 4-28-65 |
| TOLERANCES | | SHEET | |
| THE CONTENTS OF THIS DRAWING ARE THE EXCLUSIVE PROPERTY OF THE TECHNICAL MATERIEL CORP. ITS UNAUTHORIZED USE OR REPRODUCTION IN WHOLE OR IN PART IS STRICTLY FORBIDDEN. | | REV. LTR. | |

- UNLESS OTHERWISE SPECIFIED:
- USE MATERIAL THICKNESS FOR MAXIMUM RADIUS ON ALL BENDS
 - ALL ANGULAR BENDS 90 DEGREES
 - REMOVE ALL BURRS AND SHARP EDGES
 - MOUNT INSERTS AFTER FINISHING

NOTES

| Q'TY./UNIT | MODEL USED ON | ASS'Y. NO. |
|------------|---------------|------------|
| 1 | RTTA-1 | |
| SCALE 1:2 | CODE Δ | |



| REVISIONS | | | | | | |
|-----------|---------------------------------|---------|------------|-------|------|------|
| SYM | DESCRIPTION | DATE | E.M.N. NO. | DRAFT | CHKD | APPD |
| Ø | ORIGINAL RELEASE FOR PRODUCTION | 4/27/65 | MM | | | |

HOLES
A ~ 1/4 DIA ~ 8 REQ.

② MOUNT IN ALL "A"
① HOLES AS SHOWN.

NOTE - ITEMS 1 & 2 TO BE SUPPLIED AND ASSEMBLED BY TMC.

METAL STAMP TMC P/N WITH LATEST REV. LETTER, ON REAR

- UNLESS OTHERWISE SPECIFIED:
1. USE MATERIAL THICKNESS FOR MAXIMUM RADIUS ON ALL BENDS
 2. ALL ANGULAR BENDS 90 DEGREES
 3. REMOVE ALL BURRS AND SHARP EDGES
 4. MOUNT ITEMS 1 & 2 AFTER FINISHING

NOTES

| | | |
|-----------------------|---------------|------------|
| 1 | RTTA-1 | |
| Q'TY./UNIT | MODEL USED ON | ASS'Y. NO. |
| SCALE DO NOT SCALE | CODE A | |

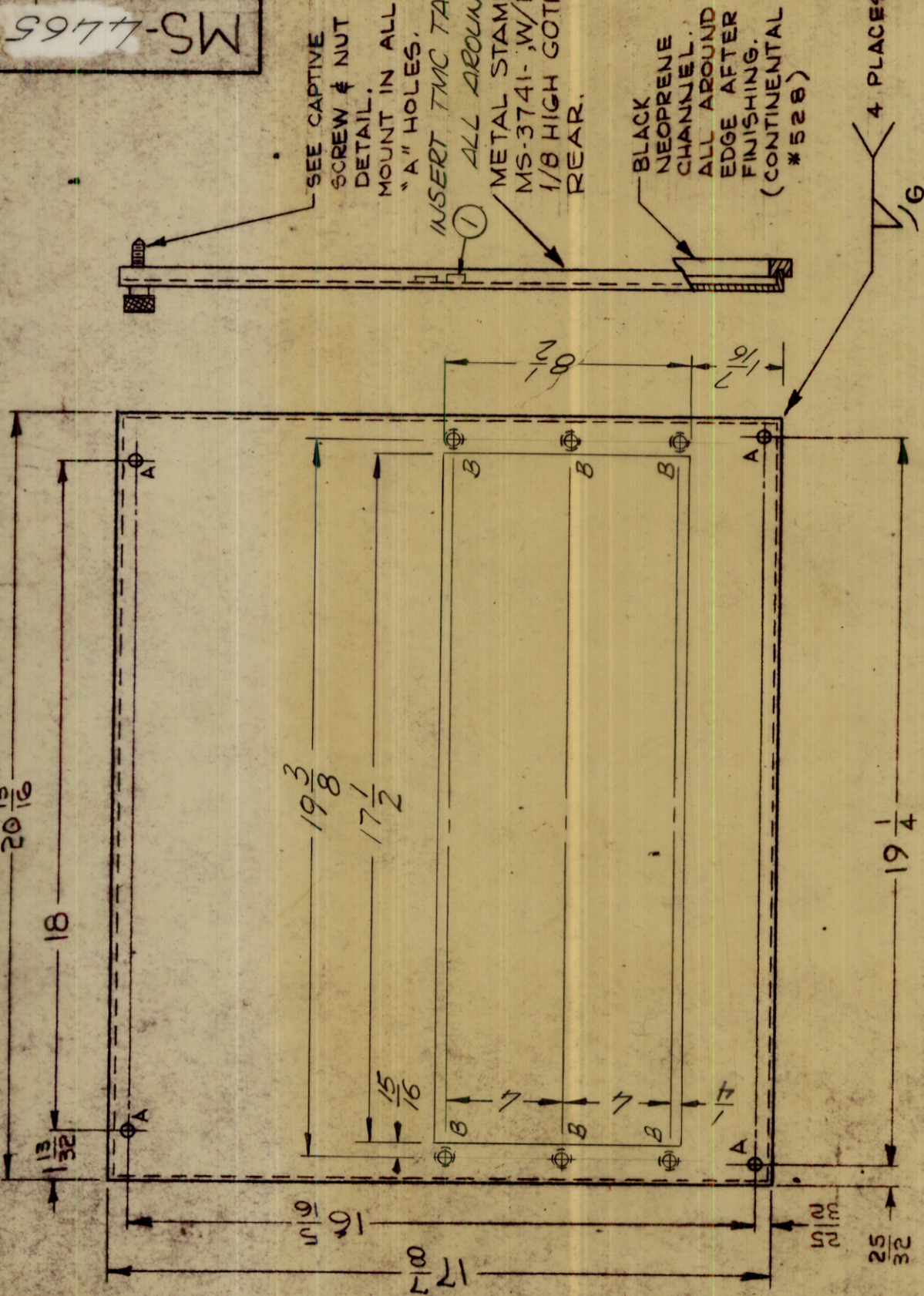
THE CONTENTS OF THIS DRAWING ARE THE EXCLUSIVE PROPERTY OF THE TECHNICAL MATERIEL CORP. ITS UNAUTHORIZED USE OR REPRODUCTION IN WHOLE OR IN PART IS STRICTLY FORBIDDEN.

| REQ'D. | ITEM | PART NUMBER | DESCRIPTION | SYMBOL |
|--------|------|-------------|---------------------|--------|
| 8 | 2 | FS109-3 | RING, STUD RETAINER | A |
| 8 | 1 | FS110-1 | STUD, SLOTTED HEAD | A |

F. EATON LIST OF MATERIAL

| | |
|---|---|
| MATERIAL .051, ALUMINUM 5052-H32 | TITLE COVER, TOP |
| FINISH 5404 - YEL. IRIDITE | |
| UNLESS OTHERWISE SPECIFIED DIMENSIONS ARE IN INCHES AND INCLUDE CHEMICALLY APPLIED OR PLATED FINISHES | DRAWN <i>[Signature]</i> DATE 4/26/65 |
| | FINAL APPROVAL <i>[Signature]</i> DATE 4/28/65 |
| DECIMALS .X ± .05 .XX ± .01 .XXX ± .005 | TOLERANCES |
| FRACTIONS ± 1/64 ANGLES ± 0° 30' | |
| | ELECT. DES. DATE |
| | MECH. DES. MP DATE 4/28/65 |
| | MS4451 - Ø |
| | SHEET |
| | REV. LTR. |

MS-4465-2 AS SHOWN
 MS-4465-3 NO CUTOFF, B HOLE

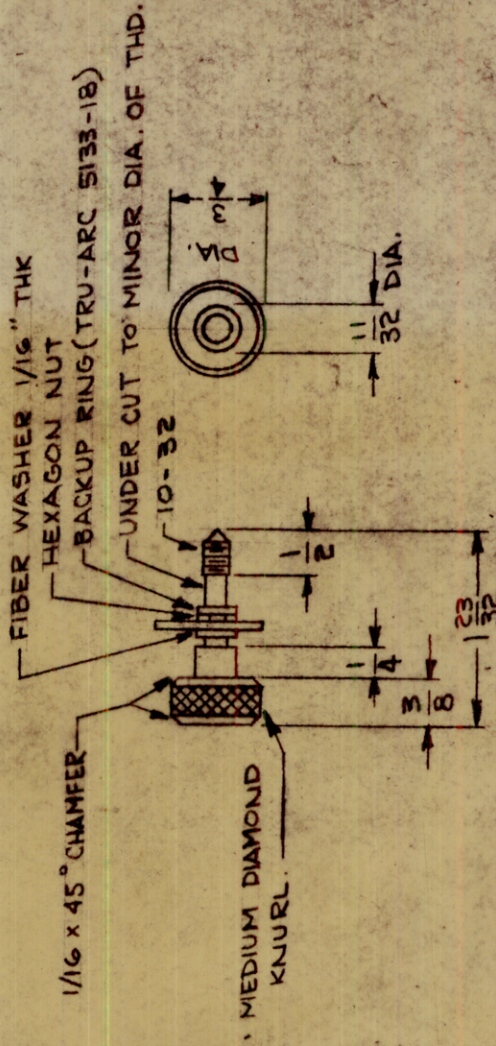


LEGEND

| HOLE | DESCRIPTION | REQ. |
|------|---------------|------|
| A | .203 DIA | 4 |
| B | .221-.224 DIA | 6 |

SEE CAPTIVE SCREW & NUT DETAIL. MOUNT IN ALL "A" HOLES.
 INSERT TMC TA-111-4-4 52.00 G
 ALL AROUND OPELING
 METAL STAMP TMC PART NO. MS-3741-W/LATEST REV, LETTER 1/8 HIGH GOTHIC LOCATED ON REAR.

BLACK NEOPRENE CHANNEL ALL AROUND EDGE AFTER FINISHING. (CONTINENTAL #528)



CAPTIVE SCREW & NUT DETAIL (4 REQ)

UNLESS OTHERWISE SPECIFIED:
 1. USE MATERIAL THICKNESS FOR MAXIMUM RADIUS ON ALL BENDS.
 2. ALL ANGULAR BENDS 90°.
 3. REMOVE ALL BURRS AND SHARP EDGES.
 4. MOUNT INSERTS AFTER FINISHING.

FINISH NOTES:
 S-404 - IRIDITE 14-2 AL-COAT.
 S-114 - ZINC CHROMATE PRIMER
 S-520 - BLUE-GRAY TEXTURED VINYL PAINT.

NOTES
 TAKEN FROM MS3741

REVISIONS

| SYM | DESCRIPTION | DATE | BY | NO. | DRAFT | CHKD | APPD |
|-----|---------------------------------|--------|----|-----|-------|------|------|
| X | EXPER. RELEASE | | | | | | |
| 0 | ORIGINAL RELEASE FOR PRODUCTION | 5/9/73 | | | | | |

MS-4465-SW

| REQ'D | ITEM | PART NUMBER | DESCRIPTION | SYMBOL |
|-------|------|-------------------|-------------|--------|
| 6 | 1 | NUT PLU OR EQUIV. | | 3 |

| LIST OF MATERIAL | |
|----------------------------|---|
| MATERIAL #18 64 CRS (0.47) | THE TECHNICAL MATERIEL CORP. MAMARONECK, NEW YORK |
| FINISH | PANEL, REAR, AUXILIARY FRAME |

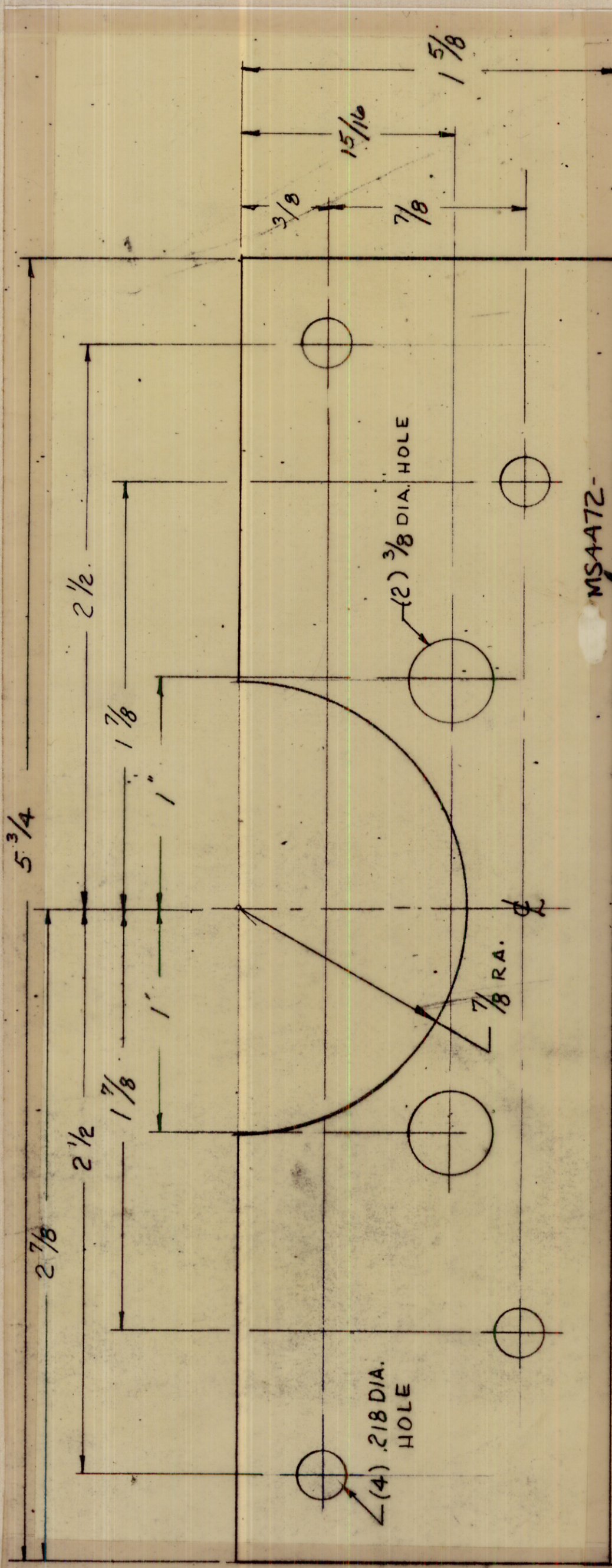
| DATE | DATE | DATE | DATE |
|-------|---------|------------|------------|
| DRAWN | CHECKED | ELECTRICAL | MECH. DES. |
| DATE | DATE | DATE | DATE |

| DATE | FINAL APPROVAL | DATE |
|------|----------------|------|
| | | |

REVISIONS

| SYM | DESCRIPTION | DATE | E.M.N. NO. | DRAFT | CHKD | APPD |
|-----|---------------------------------|---------|------------|-------|------|------|
| Ø | ORIGINAL RELEASE FOR PRODUCTION | 12/1/65 | Ø | PLA | | |

MS4472



| REQ'D. | ITEM | PART NUMBER | DESCRIPTION | SYMBOL |
|--------|----------|---|--|-----------------|
| | BUDETTI | | LIST OF MATERIAL | |
| | MATERIAL | 1/8 ALUM 5052-H32 | THE TECHNICAL MATERIEL CORP. MAMARONECK, NEW YORK | |
| | FINISH | SA04 IRIDITE | TITLE BRACKET, DC COUPLER | |
| | | UNLESS OTHERWISE SPECIFIED DIMENSIONS ARE IN INCHES AND INCLUDE CHEMICALLY APPLIED OR PLATED FINISHES | DRAWN EASZA | DATE 9-13-65 |
| | | DECIMALS .X ± .05 .XX ± .01 .XXX ± .005 | CHECKED Q/B | DATE 10/6/65 |
| | | FRACTIONS ± 1/64 ANGLES ± 0° 30' | ELECT. DES. MS4472 | DATE 12/1/65 |
| | | TOLERANCES ± 0° 30' | MECH. DES. | DATE |
| | | | SHEET | REV. LTR. |

METAL STAMP TMC PART NO. 1/8
HIGH GOTHIC W/LATEST REV. LETTER

| | | |
|--------------|---------------|-----------|
| Q'TY./UNIT | TER-100K | ASSY. NO. |
| SCALE | MODEL USED ON | |
| DO NOT SCALE | CODE | 5401-189 |

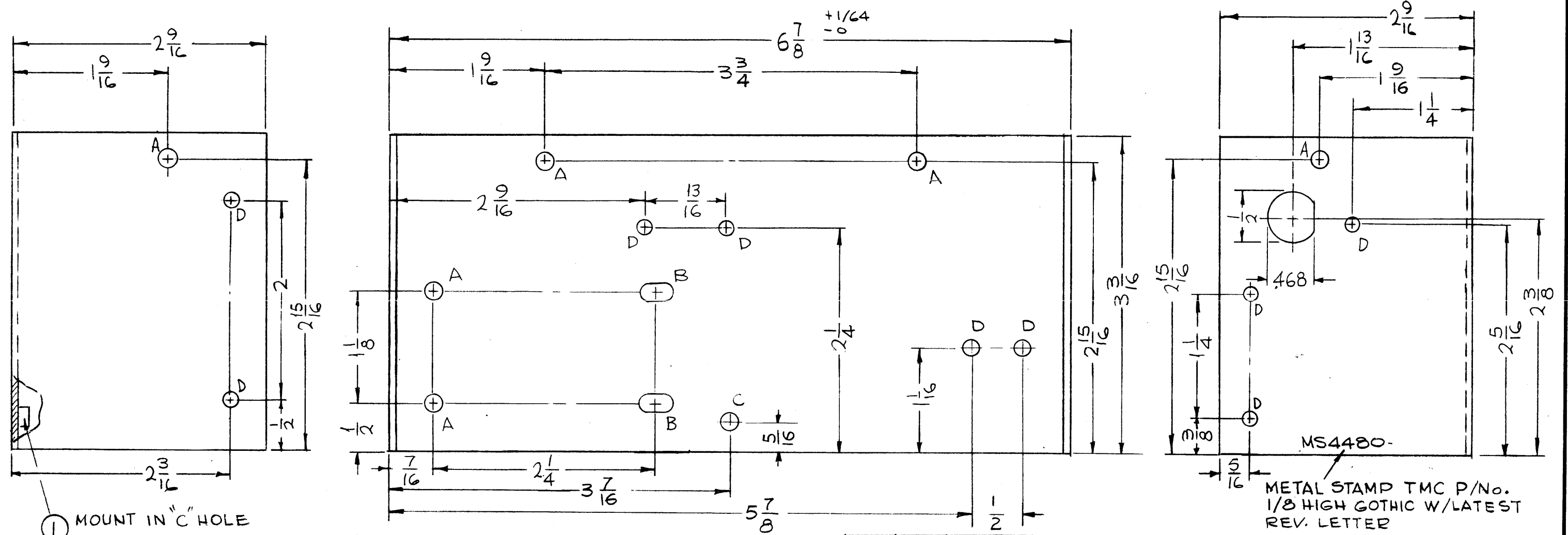
THE CONTENTS OF THIS DRAWING ARE THE EXCLUSIVE PROPERTY OF THE TECHNICAL MATERIEL CORP. ITS UNAUTHORIZED USE OR REPRODUCTION IN WHOLE OR IN PART IS STRICTLY FORBIDDEN.

NOTES

| HOLE | DESCRIPTION | REQ. |
|------|--------------------|------|
| A | 11/64 DIA | 6 |
| B | 11/64 X 11/32 SLOT | 2 |
| C | .191 - .194 DIA | 1 |
| D | 9/64 DIA | 9 |

MS4480

| REVISIONS | | | | | |
|-----------|----------------------------------|---------|------------|--------------------|------|
| SYM | DESCRIPTION | DATE | E.M.N. NO. | DRAFT | CHKD |
| X1 | 3"D" HOLE Y LEFT SIDE VIEW ADDED | 4-29-65 | | G.D.L. | |
| X2 | ON RIGHT SIDE DIM. 1/4 WAS 2/4 | 5-6-65 | X2 | G.D.L. | |
| X3 | 1 D HOLE & FUSE HOLE ADDED | 8-2-65 | X3 | <i>[Signature]</i> | |
| X4 | 3 D HOLES ADDED | 8-6-65 | X4 | <i>[Signature]</i> | |
| Ø | ORIGINAL RELEASE FOR PRODUCTION | 5-5-67 | Ø | R.G. | |



- UNLESS OTHERWISE SPECIFIED:
1. USE MATERIAL THICKNESS FOR MAXIMUM RADIUS ON ALL BENDS
 2. ALL ANGULAR BENDS 90 DEGREES
 3. REMOVE ALL BURRS AND SHARP EDGES
 4. MOUNT INSERTS AFTER FINISHING

NOTES

| TSTE 10K | | |
|---|---------------|------------|
| Q'TY./UNIT | MODEL USED ON | ASS'Y. NO. |
| SCALE | CODE | |
| 1:1 | A | |
| THE CONTENTS OF THIS DRAWING ARE THE EXCLUSIVE PROPERTY OF THE TECHNICAL MATERIEL CORP. ITS UNAUTHORIZED USE OR REPRODUCTION IN WHOLE OR IN PART IS STRICTLY FORBIDDEN. | | |

| REQ'D. | ITEM | PART NUMBER | DESCRIPTION | SYMBOL |
|--------|------|--------------|--------------------|--------|
| 1 | 1 | NT 129-632-4 | NUT, PLAIN, SPLINE | C |

F. BUDETTI LIST OF MATERIAL

| | | | |
|---|----------------------------|---------------------|--------|
| MATERIAL | .064 THK ALUMINUM 5052-H32 | | |
| FINISH | S404 YEL. IRIDITE | | |
| UNLESS OTHERWISE SPECIFIED DIMENSIONS ARE IN INCHES AND INCLUDE CHEMICALLY APPLIED OR PLATED FINISHES | | TITLE | |
| | | CHASSIS, WRAPAROUND | |
| DRAWN | DATE | FINAL APPROVAL | DATE |
| WB | 3-26-65 | <i>[Signature]</i> | 5/5/67 |
| CHECKED | DATE | | |
| ELECT. DES. | DATE | MS4480 | |
| MECH. DES. | DATE | Ø | |
| | 4-8-65 | SHEET | |
| | | REV. LTR. | |

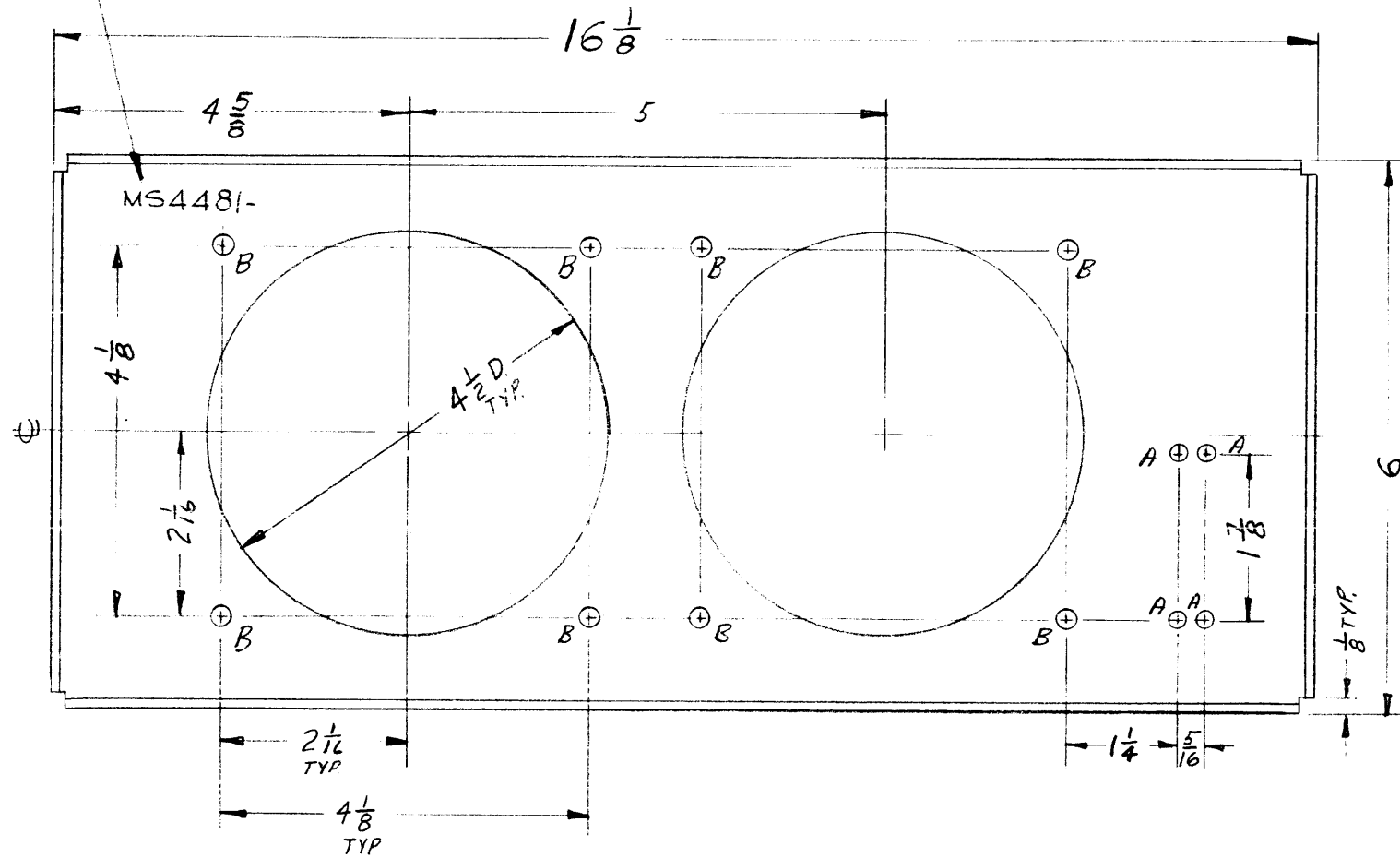
MS4481

REVISIONS

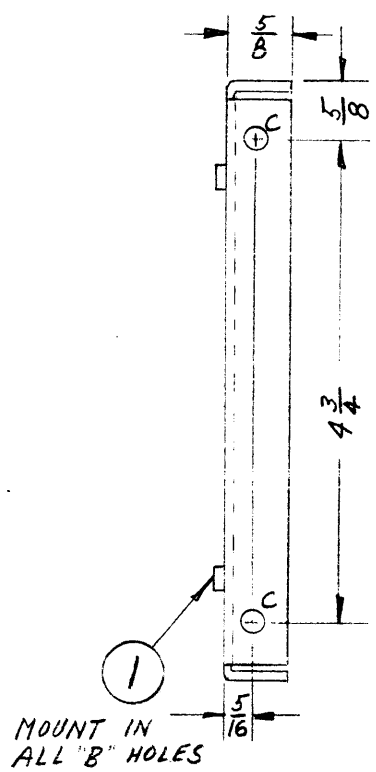
| SYM | DESCRIPTION | DATE | E.M.N. NO. | DRAFT | CHKD | APPD |
|-----|---------------------------------|---------|------------|-------|------|------|
| X1 | Length was 1 1/8 | 3/29/65 | | D/M | CM | |
| X2 | DIM CHGE, 4 5/8 WAS 4 1/8 | | | | | |
| Ø | ORIGINAL RELEASE FOR PRODUCTION | 5/3/67 | Ø | Ø | | JH |

METAL STAMP TMC PART NO.
 1/8 HIGH GOTHIC W/LATEST REV LETTER.

OPPOSITE SIDE SAME.



| HOLES | DESCRIPTION | REQ. |
|-------|-------------|------|
| A | 9/64 DIA | 4 |
| B | .191-.194 " | 8 |
| C | 15/64 DIA | 4 |



REF: LD1837

UNLESS OTHERWISE SPECIFIED:

1. USE MATERIAL THICKNESS FOR MAXIMUM RADIUS ON ALL BENDS
2. ALL ANGULAR BENDS 90 DEGREES
3. REMOVE ALL BURRS AND SHARP EDGES
4. MOUNT INSERTS AFTER FINISHING

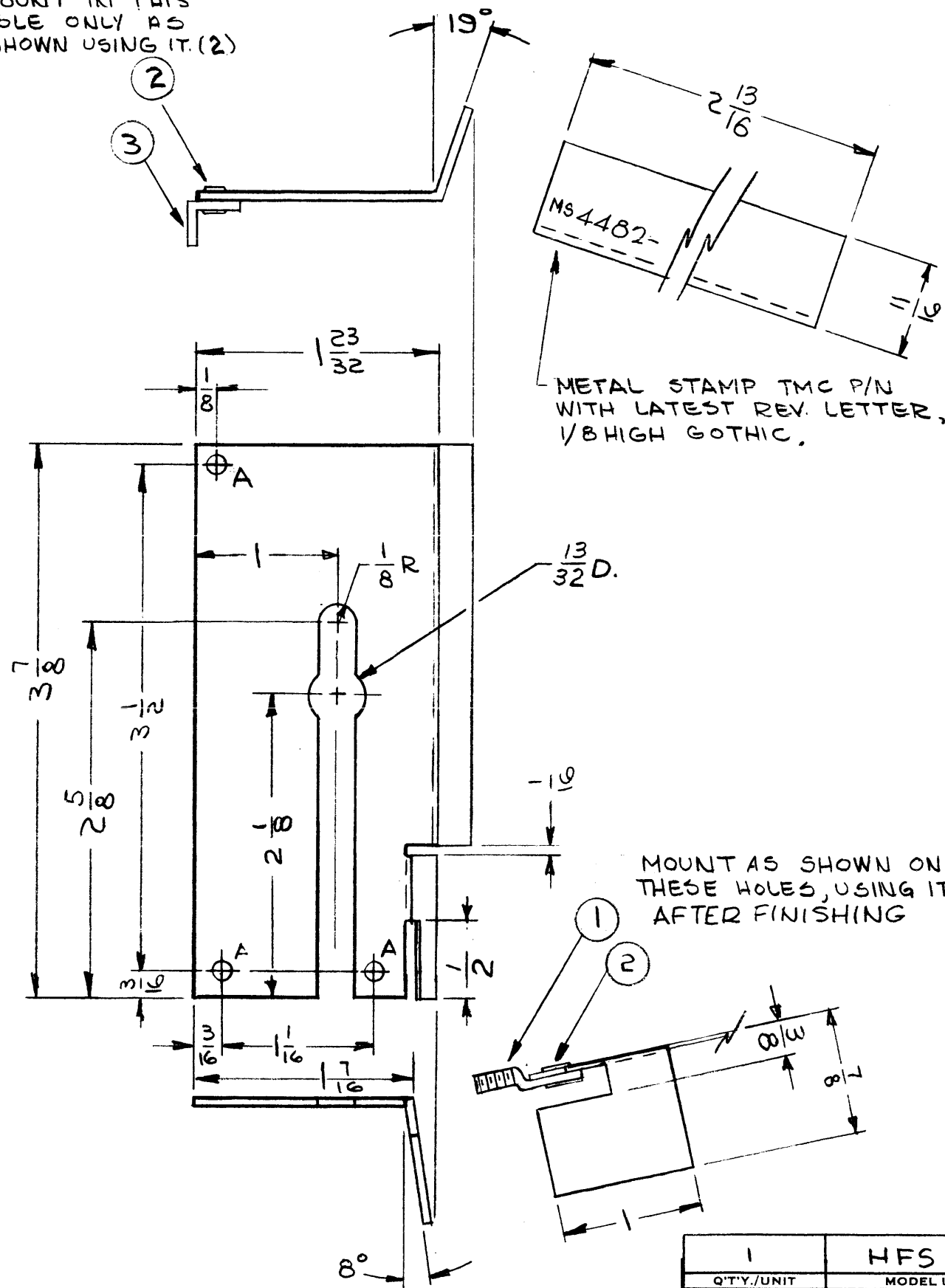
NOTES

| | | |
|------------|----------------|------------|
| 1 | TSTE10K 1AX563 | A4226 |
| Q'TY./UNIT | MODEL USED ON | ASS'Y. NO. |
| SCALE | CODE | |

THE CONTENTS OF THIS DRAWING ARE THE EXCLUSIVE PROPERTY OF THE TECHNICAL MATERIEL CORP. ITS UNAUTHORIZED USE OR REPRODUCTION IN WHOLE OR IN PART IS STRICTLY FORBIDDEN.

| | | | | |
|---|------|--------------------|---|-------------------------------|
| REQ'D. | ITEM | PART NUMBER | DESCRIPTION | SYMBOL |
| B | 1 | NT129-0632-4 | NUT, PLAIN, SPLINE | B |
| BUDETTI LIST OF MATERIAL | | | | |
| MATERIAL .081 ALUMINUM 5052-H32 | | | THE TECHNICAL MATERIEL CORP. MAMARONECK, NEW YORK | |
| FINISH S404 YEL IRIDITE | | | TITLE CHASSIS, FAIU | |
| UNLESS OTHERWISE SPECIFIED DIMENSIONS ARE IN INCHES AND INCLUDE CHEMICALLY APPLIED OR PLATED FINISHES | | DRAWN D/M | DATE 26/10/65 | FINAL APPROVAL [Signature] |
| DECIMALS .X ± .05 .XX ± .01 .XXX ± .005 | | CHECKED D/M | DATE 7/22/65 | DATE 5/1/67 |
| FRACTIONS ± 1/64 ANGLES ± 0° 30' | | ELECT. DES. D/M | DATE | DATE |
| TOLERANCES | | MECH. DES. D/M | DATE | DATE |
| SHEET | | | | REV. LTR. |

MOUNT IN THIS HOLE ONLY AS SHOWN USING IT (2)



METAL STAMP TMC P/N WITH LATEST REV. LETTER, 1/8 HIGH GOTHIC.

MOUNT AS SHOWN ONLY IN THESE HOLES, USING IT (1) & (2). AFTER FINISHING

NOTES

| | | |
|---|---------------|------------|
| 1 | HFS () | |
| Q'TY./UNIT | MODEL USED ON | ASS'Y. NO. |
| SCALE 1:1 | CODE A | |
| THE CONTENTS OF THIS DRAWING ARE THE EXCLUSIVE PROPERTY OF THE TECHNICAL MATERIEL CORP. ITS UNAUTHORIZED USE OR REPRODUCTION IN WHOLE OR IN PART IS STRICTLY FORBIDDEN. | | |

| SYM | DESCRIPTION | DATE | E.M.N. NO. | DRAFT | CHKD | APPD |
|-----|---|---------|------------|--------|------|------|
| | | | | | | |
| X1 | EY100-7 DELETED. ITEM 3 WAS EY100-8 | 8/13/65 | | | | |
| Ø | ORIGINAL RELEASE FOR PRODUCTION | 8/13/65 | | | | |
| A | ① HOLE 13/32 D. ADDED. DIM. 1/2 WAS 1/4 & 3/8 WAS 1/4 | 9/5/65 | 14941 | H.V.V. | J.B. | N.M. |

| HOLE | DESCRIPTION | REQ. |
|------|-------------|------|
| A | 1/8 DIA. | 3 |

UNLESS OTHERWISE SPECIFIED:

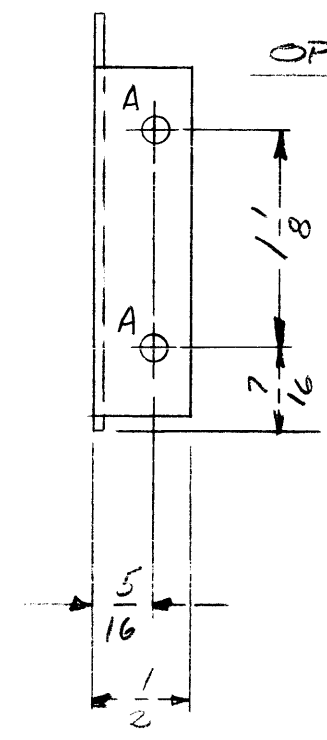
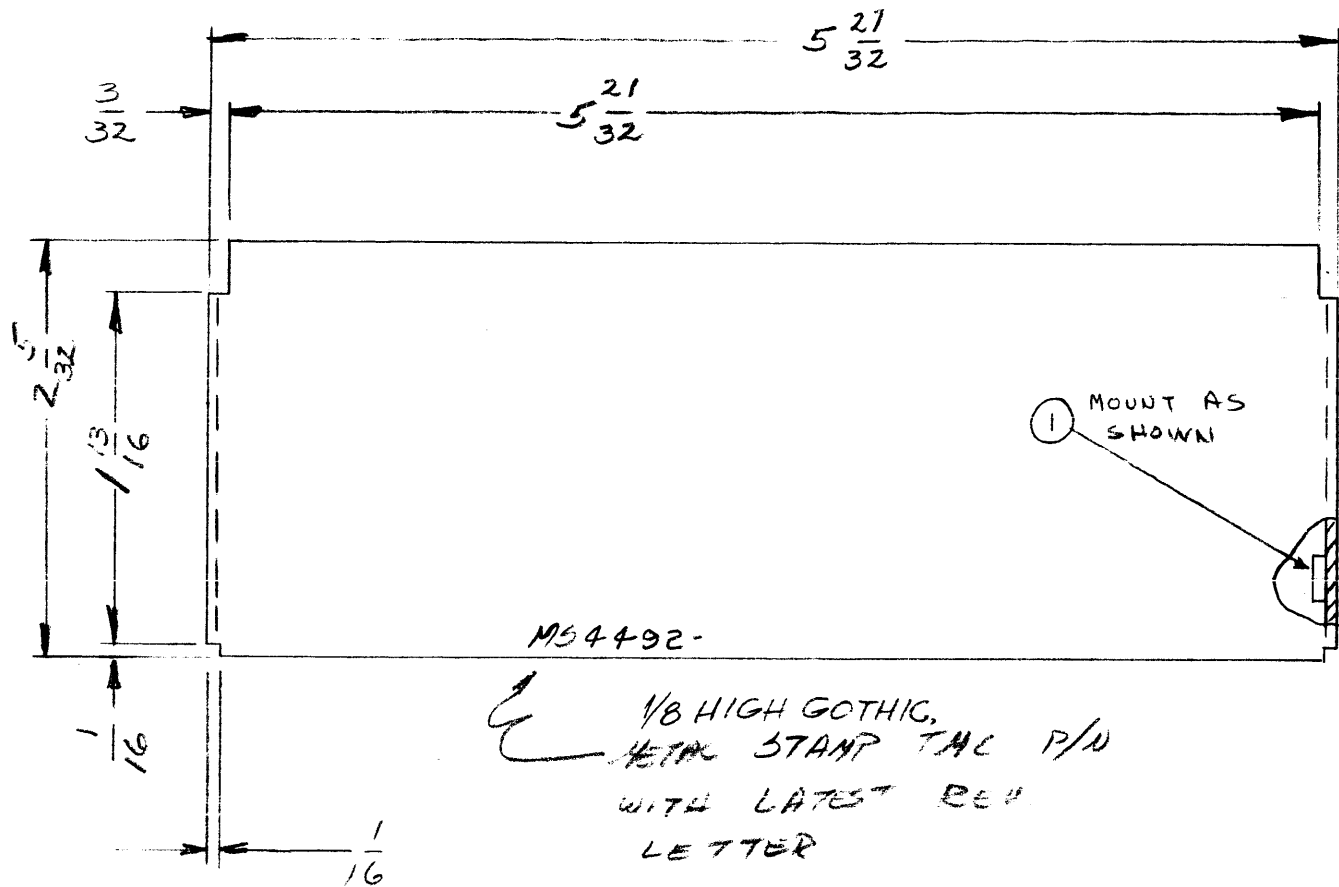
1. USE MATERIAL THICKNESS FOR MAXIMUM RADIUS ON ALL BENDS
2. ALL ANGULAR BENDS 90 DEGREES
3. REMOVE ALL BURRS AND SHARP EDGES
4. MOUNT INSERTS AFTER FINISHING

| REQ'D. | ITEM | PART NUMBER | DESCRIPTION | SYMBOL |
|--------|------|-------------|---------------------|--------|
| 1 | 3 | TE167 | BK'T, RIGHT ANGLE | B |
| 3 | 2 | EY100-1 | EYELET, FLAT FLANGE | A |
| 2 | 1 | SC107-1 | BOLT, SPADE | A |

LIST OF MATERIAL

| | | | |
|---|---|----------------------------------|-------------------------|
| MATERIAL .062, ALUMINUM 5052-H32 | THE TECHNICAL MATERIEL CORP. MAMARONECK, NEW YORK | | |
| FINISH S404 - YELLOW IRIDITE | TITLE SHIELD, ROTARY SWITCH | | |
| UNLESS OTHERWISE SPECIFIED DIMENSIONS ARE IN INCHES AND INCLUDE CHEMICALLY APPLIED OR PLATED FINISHES | DRAWN G. Jensen | DATE 3-30-65 | FINAL APPROV. W. Jordan |
| | CHECKED J.B. | DATE 8/13/65 | DATE 8/13/65 |
| DECIMALS .X ± .05 .XX ± .01 .XXX ± .005 | TOLERANCES | FRACTIONS ± 1/64 ANGLES ± 0° 30' | MECH. DES. W. JORDAN |
| | | DATE 8/13/65 | SHEET MS4482 A |
| | | | REV. LTR. |

| SYM | DESCRIPTION | DATE | E.M.N. NO. | DRAFT | CHKD | APPD |
|--------|---------------------------------|---------|------------|-------|------|------|
| | | | | | | |
| Ø | ORIGINAL RELEASE FOR PRODUCTION | 5/24/65 | M | JK | | |
| MS4492 | | | | | | |



OPPOSITE SIDE IDENTICAL

HOLE
A-.191-.194 DIA (4 REQ)

MS4492-
1/8 HIGH GOTHIC,
METAL STAMP TMC P/N
WITH LATEST REV
LETTER

UNLESS OTHERWISE SPECIFIED:

1. USE MATERIAL THICKNESS FOR MAXIMUM RADIUS ON ALL BENDS
2. ALL ANGULAR BENDS 90 DEGREES
3. REMOVE ALL BURRS AND SHARP EDGES
4. MOUNT INSERTS AFTER FINISHING

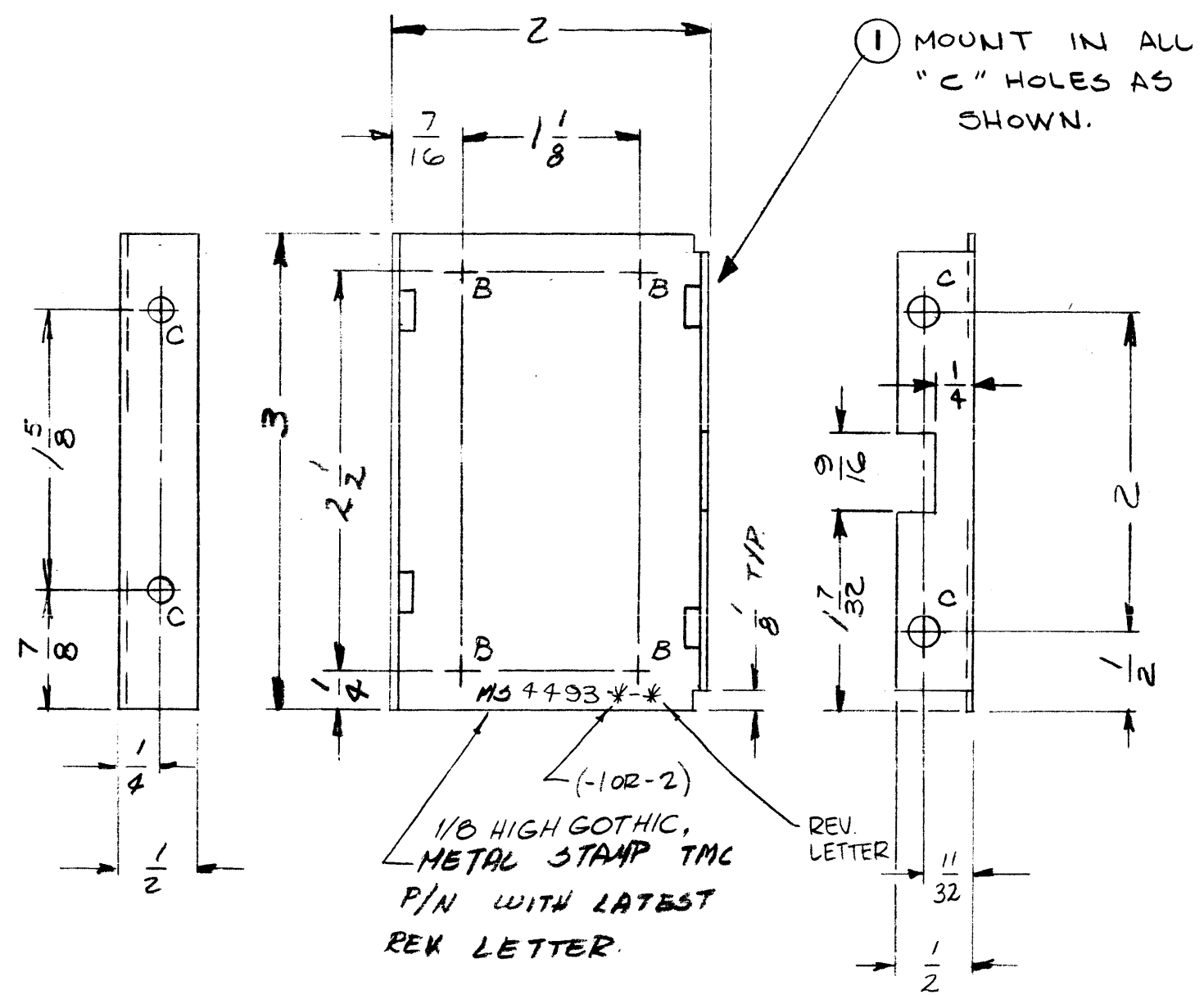
NOTES

| | | |
|---|---------------|-----------|
| 2 | RC5A-1 | |
| QTY./UNIT | MODEL USED ON | ASSY. NO. |
| SCALE | CODE | |
| 1:1 | A | |
| THE CONTENTS OF THIS DRAWING ARE THE EXCLUSIVE PROPERTY OF THE TECHNICAL MATERIEL CORP. ITS UNAUTHORIZED USE OR REPRODUCTION IN WHOLE OR IN PART IS STRICTLY FORBIDDEN. | | |

| | | | | |
|---|------|-------------|--|-----------------|
| 4 | 1 | NT129-632-4 | NUT, PLAIN, SPLINE | |
| REQ'D. | ITEM | PART NUMBER | DESCRIPTION | SYMBOL |
| EATON LIST OF MATERIAL FORMALLY E3162B-31 | | | | |
| MATERIAL .062 ALUMINUM 5052-H32 | | | THE TECHNICAL MATERIEL CORP. MAMARONECK, NEW YORK | |
| FINISH 3404 YELLOW IRDITE | | | TITLE COVER, MTG - RELAY ASSY - TOP & BOTTOM | |
| UNLESS OTHERWISE SPECIFIED DIMENSIONS ARE IN INCHES AND INCLUDE CHEMICALLY APPLIED OR PLATED FINISHES | | | DRAWN J. Jordan | DATE 3/31/65 |
| DECIMALS .X ± .05 .XX ± .01 .XXX ± .005 | | | CHECKED JK | DATE 5/24/65 |
| FRACTIONS ± 1/64 ANGLES ± 0° 30' | | | ELECT. DES. JK | DATE |
| TOLERANCES | | | MECH. DES. W. JORDAN | DATE 5/25/65 |
| | | | FINAL APPROVAL J. Jordan | DATE 5/25/65 |
| | | | MS4492 | |
| | | | SHEET | REV. LTR. |

| SYM | DESCRIPTION | REVISIONS | | | | |
|-----|--|-----------|------------|--------------------|------|------|
| | | DATE | E.M.N. NO. | DRAFT | CHKD | APPD |
| X1 | DIM 1/4 ADDED TO CUTOUT (ERROR) (4) "C" HOLES ADDED; (2) "B" HOLES DELETED (2) "A" HOLES .221-.224 + (1) (2) NT129-832-4 DELETED | 4-12-65 | X1 | <i>[Signature]</i> | J.M. | W.J. |
| X2 | CHART ADDED | 4-13-65 | X2 | <i>[Signature]</i> | J.M. | W.J. |
| Ø | ORIGINAL RELEASE FOR PRODUCTION | 5/26/65 | -A- | <i>[Signature]</i> | | |

MS4493



HOLES

- B - 3/16 DIA. - 4 REQ
- C - .191-.194 DIA - 4 REQ.

| TMC P/N | DESCRIPTION |
|----------|---------------------|
| MS4493-1 | AS SHOWN |
| MS4493-2 | OPP. HAND IDENTICAL |

- UNLESS OTHERWISE SPECIFIED:
- USE MATERIAL THICKNESS FOR MAXIMUM RADIUS ON ALL BENDS
 - ALL ANGULAR BENDS 90 DEGREES
 - REMOVE ALL BURRS AND SHARP EDGES
 - MOUNT INSERTS AFTER FINISHING

NOTES

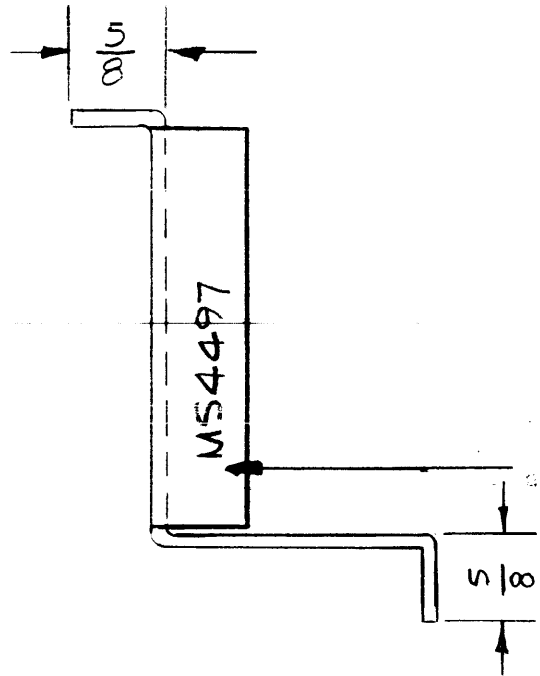
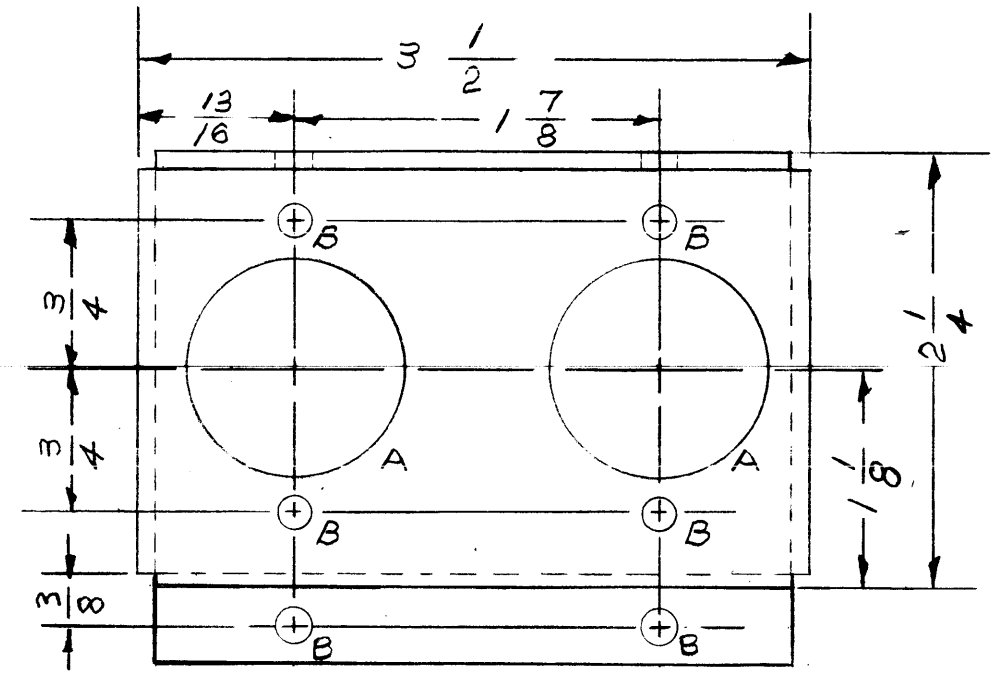
| | | |
|---|---------------|------------|
| 2 | PCSA-1 | |
| Q'TY./UNIT | MODEL USED ON | ASS'Y. NO. |
| SCALE 1:1 | CODE A | |
| THE CONTENTS OF THIS DRAWING ARE THE EXCLUSIVE PROPERTY OF THE TECHNICAL MATERIEL CORP. ITS UNAUTHORIZED USE OR REPRODUCTION IN WHOLE OR IN PART IS STRICTLY FORBIDDEN. | | |

| | | | | |
|---|--------------|-----------------------------------|---|--------------|
| 4 | 1 | NT129-632-4 | NUT, PLAIN, SPLINE | C |
| REQ'D. | ITEM | PART NUMBER | DESCRIPTION | SYMBOL |
| EATON LIST OF MATERIAL FORMALLY E3162B-23 | | | | |
| MATERIAL .062, ALUMINUM 5052-H32 | | | THE TECHNICAL MATERIEL CORP. MAMARONECK, NEW YORK | |
| FINISH 5404-YEL. IRIDITE | | | TITLE BK'T, MTG, RELAY - LEFT & RIGHT | |
| UNLESS OTHERWISE SPECIFIED DIMENSIONS ARE IN INCHES AND INCLUDE CHEMICALLY APPLIED OR PLATED FINISHES | | | | |
| DRAWN <i>[Signature]</i> | DATE 3-31-65 | FINAL APPROVAL <i>[Signature]</i> | | DATE 5/25/65 |
| CHECKED <i>[Signature]</i> | DATE 5/26/65 | | | |
| ELECT. DES. | DATE | MS4493 | | Ø |
| MECH. DES. W. JORDAN | DATE 5/25/65 | SHEET | | REV. LTR. |

MS4497 Ø

REVISIONS

| SYM | DESCRIPTION | DATE | E.M.N. NO. | DRAFT | CHKD | APPD |
|-----|------------------------------|---------|------------|-------|--------------------|--------------------|
| X | EXP. RELEASE | 4-6-65 | 1 | CL | <i>[Signature]</i> | <i>[Signature]</i> |
| X1 | 5/8 LIP WAS 1/2 | 4-7-65 | 2 | RU | <i>[Signature]</i> | <i>[Signature]</i> |
| X2 | ADDED "C" HOLES | 4/26/65 | 3 | JL | <i>[Signature]</i> | <i>[Signature]</i> |
| Ø | ORIG. RELEASE FOR PRODUCTION | 4/30/65 | | J.L. | | |

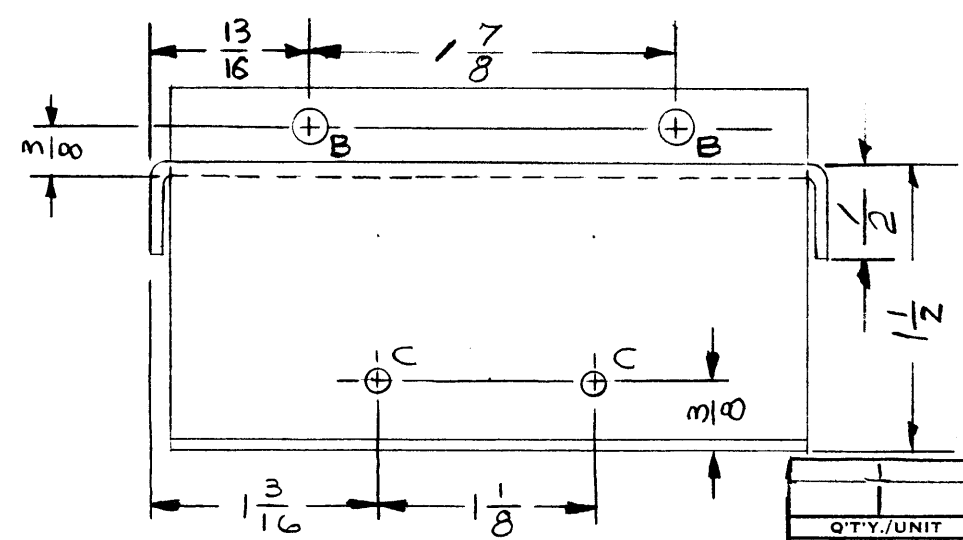


| HOLE | DESCRIPTION | REQ'D |
|------|-------------|-------|
| A | 1 1/8 DIA. | 2 |
| B | 11/64 DIA. | 8 |
| C | 9/64 DIA | 2 |

METAL STAMP TMC PART NO. 1/8 HIGH GOTHIC.
WITH LATEST REV. LETTER

UNLESS OTHERWISE SPECIFIED:

1. USE MATERIAL THICKNESS FOR MAXIMUM RADIUS ON ALL BENDS
2. ALL ANGULAR BENDS 90 DEGREES
3. REMOVE ALL BURRS AND SHARP EDGES
4. MOUNT INSERTS AFTER FINISHING



REF.: LD1879

| REQ'D. | ITEM | PART NUMBER | DESCRIPTION | SYMBOL |
|---|------|--|-------------|-------------|
| F. E. EATON LIST OF MATERIAL | | | | |
| MATERIAL | | ALUMINUM .064 THK. | | |
| FINISH | | S404 YEL. IRIDITE | | |
| TITLE | | BRACKET, RELAY MTG. | | |
| DRAWN | | LANZA | DATE | 3/26/65 |
| CHECKED | | <i>[Signature]</i> | DATE | 4/29/65 |
| ELECT. DES. | | | DATE | |
| MECH. DES. | | <i>[Signature]</i> | DATE | 4/29/65 |
| UNLESS OTHERWISE SPECIFIED DIMENSIONS ARE IN INCHES AND INCLUDE CHEMICALLY APPLIED OR PLATED FINISHES | | FINAL APPROVAL <i>[Signature]</i> DATE 4/30/65 | | |
| DECIMALS .X ± .05 .XX ± .01 .XXX ± .005 | | FRACTIONS ± 1/64 ANGLES ± 0° 30' | | MS 4497 - Ø |
| TOLERANCES | | SHEET | | REV. LTR. |

| | | |
|------------|---------------|--------------|
| Q'TY./UNIT | MODEL USED ON | ASS'Y. NO. |
| SCALE | CODE | Do Not Scale |
| 1:1 | A | |

THE CONTENTS OF THIS DRAWING ARE THE EXCLUSIVE PROPERTY OF THE TECHNICAL MATERIEL CORP. ITS UNAUTHORIZED USE OR REPRODUCTION IN WHOLE OR IN PART IS STRICTLY FORBIDDEN.

NOTES