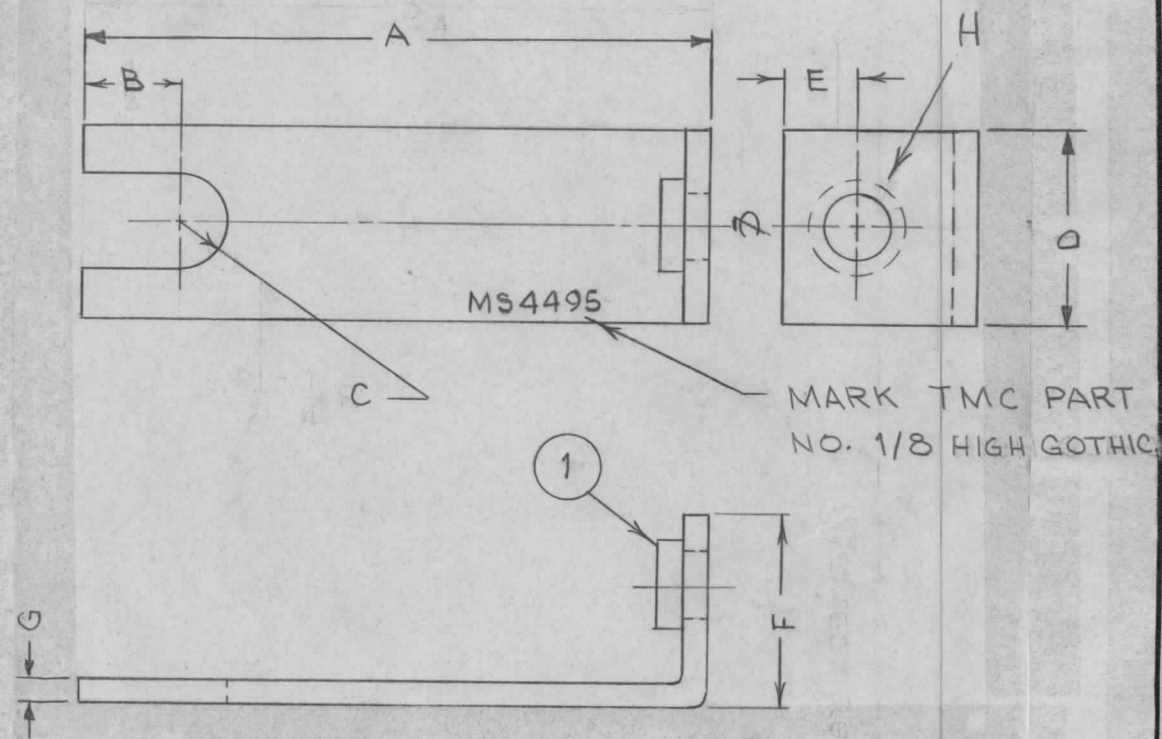


MS4495 A

| TMC P/N | A | B | C | D | E | F | G | H | ITEM 1 | MATERIAL | FINISH | QTY/ UNIT | MODEL |
|----------|-------|-----|------|---|-----|-----|------|--------------|--------------|----------------|--------------|--------------|---------|
| MS4495 | 3-1/4 | 1/2 | 1/4 | 1 | 3/8 | 1 | 1/8 | .344 .347 | NT129-420-6 | ALUM. 5052-H32 | IRIDITE S404 | 12 | KIT 247 |
| MS4495-2 | 1-1/4 | 1/2 | 3/16 | 1 | 3/8 | 7/8 | .081 | .250 .253 | NT129-1032-4 | ALUM. 5052-H32 | IRIDITE S404 | 12 | 200K |



UNLESS OTHERWISE SPECIFIED:

1. USE MATERIAL THICKNESS FOR MAXIMUM RADIUS ON ALL BENDS
2. ALL ANGULAR BENDS 90 DEGREES
3. REMOVE ALL BURRS AND SHARP EDGES
4. MOUNT INSERTS AFTER FINISHING

| SYM | DESCRIPTION | DATE | CH. NO. | DRAFTS | CHECKER | ENG. APP. | REQ. | ITEM | PART NO. | BUDETTI | DESCRIPTION | SYMBOL |
|-----|---------------------------------|--------|---------|--------|---------|-----------|------|------|----------------------|---------|---|----------|
| | | | | | | | 1 | 1 | SEE CHART | | NUT, PLN, SPLINE | |
| A | COMPLETELY REVISED | 1-6-67 | 17603 | RME | JCS | EXS | | | 1/8 THICK STOCK SIZE | | THE TECHNICAL MATERIEL CORP. MAMARONECK. NEW YORK | |
| Ø | ORIGINAL RELEASE FOR PRODUCTION | 4-7-65 | AA | NLA | | | | | ALUMINUM | | BRACKET, COVER PROTECT XFMR | |
| | | | | | | | | | 5052-H32 | | H-AUSTIN | JCS |
| | | | | | | | | | S404-IRIDITE | | MECH. DES. APP. | MS4495 A |

UNLESS OTHERWISE SPECIFIED DIMENSIONS ARE IN INCHES AND INCLUDE CHEMICALLY APPLIED OR PLATED FINISHES

SCALE 1:1

DECIMALS .X ± .05 .XX ± .01 .XXX ± .005

FRACTIONS ± 1/64 ANGLES ± 0° 30'

TOLERANCES

CODE