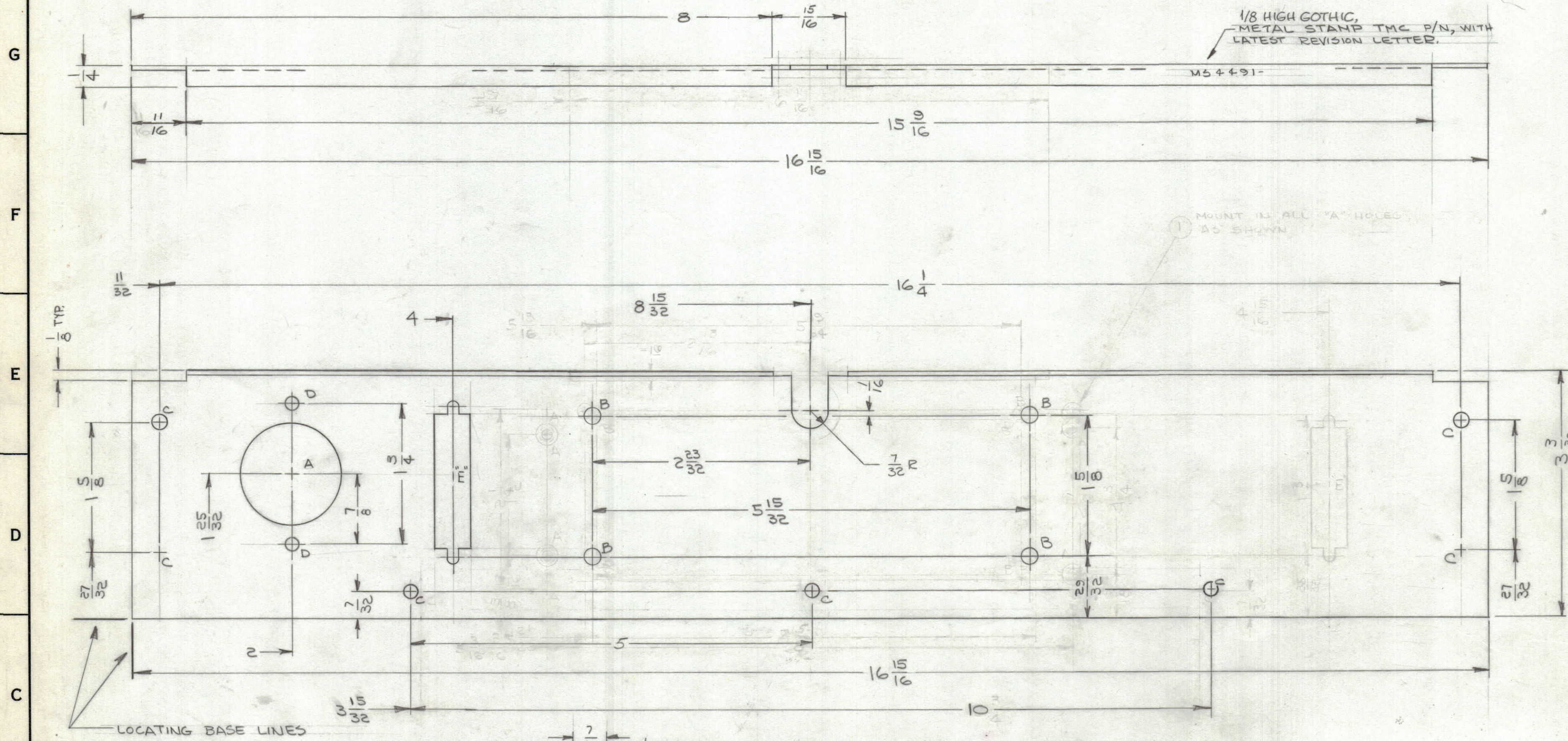
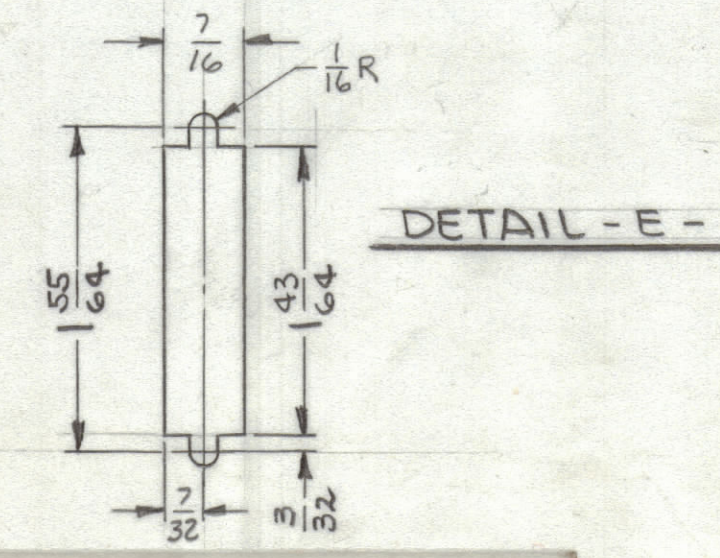


REVISIONS							
ZONE	SYM	DESCRIPTION	DATE	E.M.N. NO.	DRAFT	CHKD	APRD
E6	X1	"E" CUTOUT RELOCATED.	4/7/65	X1	J.P.	J.M.	W.J.
	Ø	ORIGINAL RELEASE FOR PRODUCTION	5/11/65	-	-	-	-



HOLE	DESCRIPTION	REQ.
A	1-1/4 DIA	1
B	3/16 DIA.	4
C	11/64 DIA	7
D	5/32 DIA	2
E	SEE DETAIL	1



UNLESS OTHERWISE SPECIFIED:

- USE MATERIAL THICKNESS FOR MAXIMUM RADIUS ON ALL BENDS
- ALL ANGULAR BENDS 90 DEGREES
- REMOVE ALL BURRS AND SHARP EDGES

NOTES

QTY/UNIT	MODEL USED ON	ASS'Y. NO.
1	RCSA-1	
SCALE	CODE	
1:1	A	

THE CONTENTS OF THIS DRAWING ARE THE EXCLUSIVE PROPERTY OF THE TECHNICAL MATERIEL CORP. ITS UNAUTHORIZED USE OR REPRODUCTION IN WHOLE OR IN PART IS STRICTLY FORBIDDEN.

REF: LD1842 E3162B-25

REQ'D.	ITEM	PART NUMBER	DESCRIPTION	SYMBOL
			NOT PLAIN SPONGE	
FEATON LIST OF MATERIAL FORMALLY E3162B-25				
MATERIAL		THE TECHNICAL MATERIEL CORP. MAMARONECK, NEW YORK		
.062, ALUMINUM 5052-H32				
FINISH		TITLE		
S404-YEL. IRIDITE		PLATE, REAR		
DRAWN	DATE	FINAL APPROVAL	DATE	
By [Signature]	3/5/65	[Signature]	5/25/65	
CHECKED	DATE	DATE		
[Signature]	5/26/65	MS4491		
ELECT. DES.	DATE	DATE		
[Signature]	5/25/65	SHEET		
MECH. DES.	DATE	DATE		
W. JORDAN	5/25/65	REV. LTR.		

MS4491 Ø