

**FINISH NOTES:**

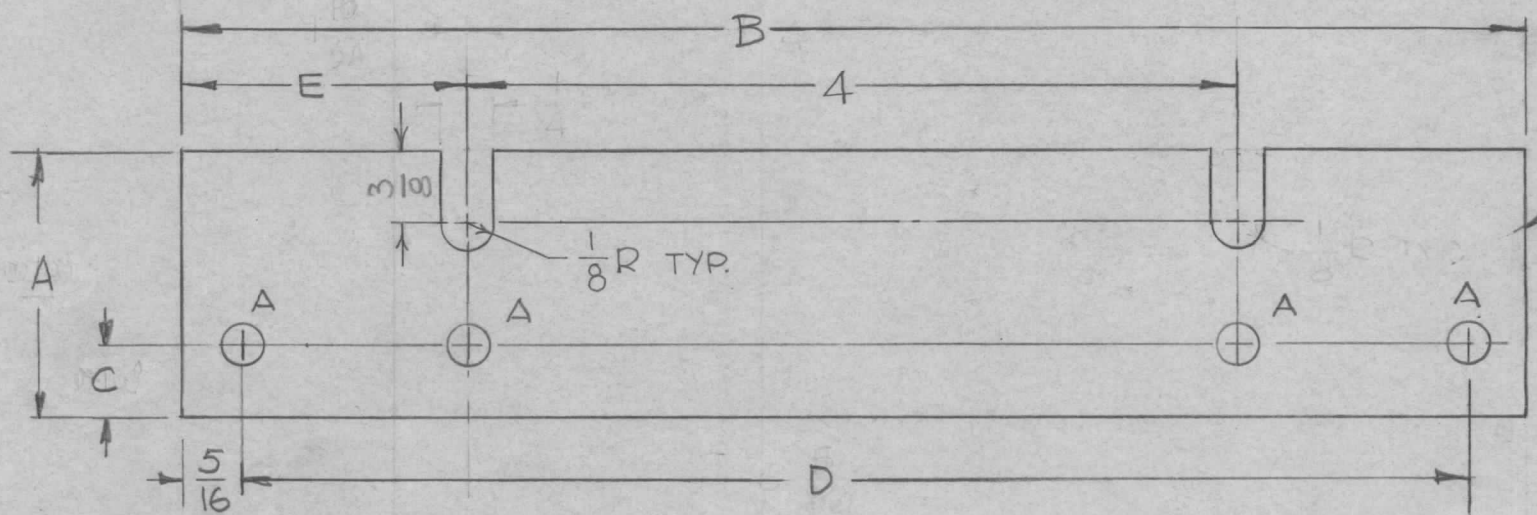
1. S404 - IRIDITE 14-2 AL-COAT.
2. S114 - ZINC CHROMATE PRIMER) FRONT AND
3. S115 - SMOOTH GRAY ENAMEL ) EDGES ONLY

REQ. PER UNIT	USED ON			MS4489-Ø
	MODEL	ASS'Y. NO.	DATE	
2	TCSA-1	AXG32	8-9-66	

~ HOLE ~  
A - 13/64 DIA. 4 REQ.

TMC P/N	A	B	C	D	E
MS4489	1-3/8	6-31/32	3/8	6-11/32	1-31/64
MS4489-2	1-11/32	6-15/16	7/16	6-5/16	1-15/32

← THIS PART REPLACED BY MS4489-2 AS OF 12-15-66.



MARK TMC PART No. 1/8 HIGH GOTHIC W/LATEST REV. LETTER ON REAR OF PLATE

Ø	ORIGINAL RELEASE FOR PRODUCTION	1/11/67	Ø	CV		
X5	CHART & NOTE ADDED	12-15-66	X5			
X4	RE-DESIGNED	12-13-66	X4			
X3	REVISED & REDRAWN FROM SIZE (2)	8-9-66	X3	G.D.L.		
X2	CHOLES ADDED	7-7-66	X2	SRG		
X1	TOL. ADDED, 3/8 WAS 1/4, MOD. WAS TST-2.5K	6-21-66	X1			
X	EXP. RELEASE	11-25-64	X			
SYM	DESCRIPTION	DATE	CH. NO.	DRAFTS	CHECKER	ENG. APP.
UNLESS OTHERWISE SPECIFIED DIMENSIONS ARE IN INCHES AND INCLUDE CHEMICALLY APPLIED OR PLATED FINISHES		SCALE		1:1		
DECIMALS .X ± .05 .XX ± .01 .XXX ± .005	TOLERANCES	FRACTIONS ± 1/64 ANGLES ± 0° 30'	CODE A			

REQ. ITEM	PART NO.	BUDETTI	DESCRIPTION	SYMBOL
	3/16 THK		THE TECHNICAL MATERIEL CORP. MAMARONECK. NEW YORK	
	ALUMINUM		PLATE, PANEL MTG.	
	5052-H32	G.D.L.		
TYPE & TEMPER	HEAT TREAT. SPEC.	DRAWN	CHECKED	FINAL APPROVAL
SEE NOTES				
FINISH & SPEC. NO.	ELEC. DES. APP.	MECH. DES. APP.		MS4489-Ø