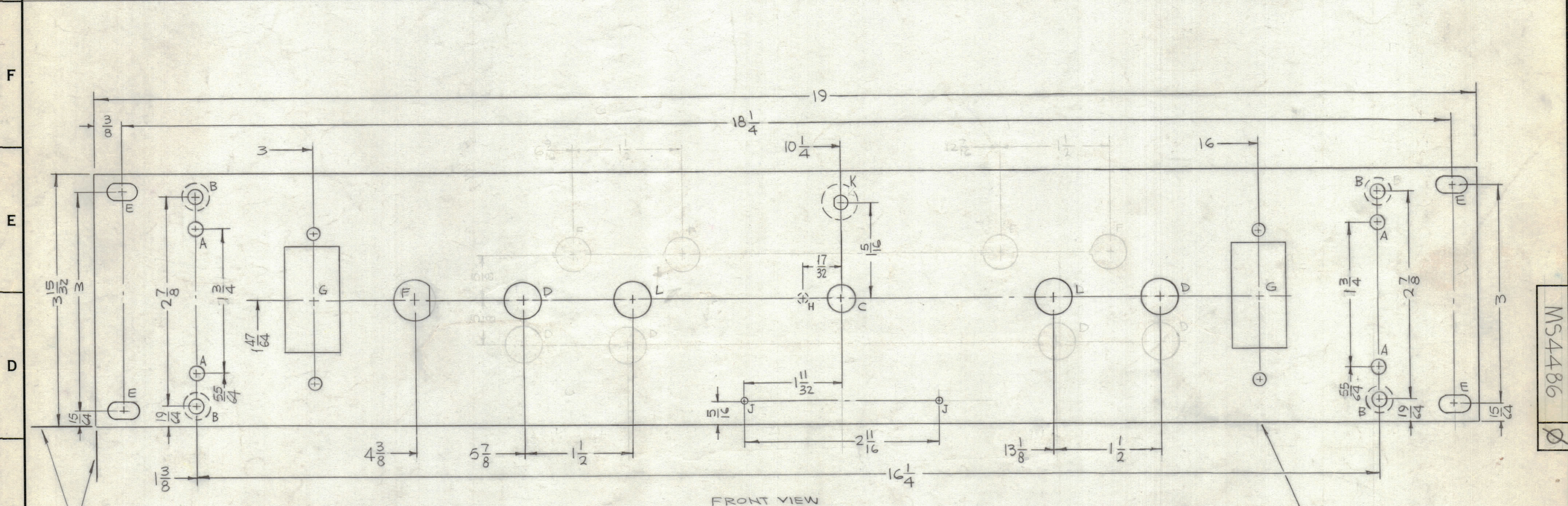
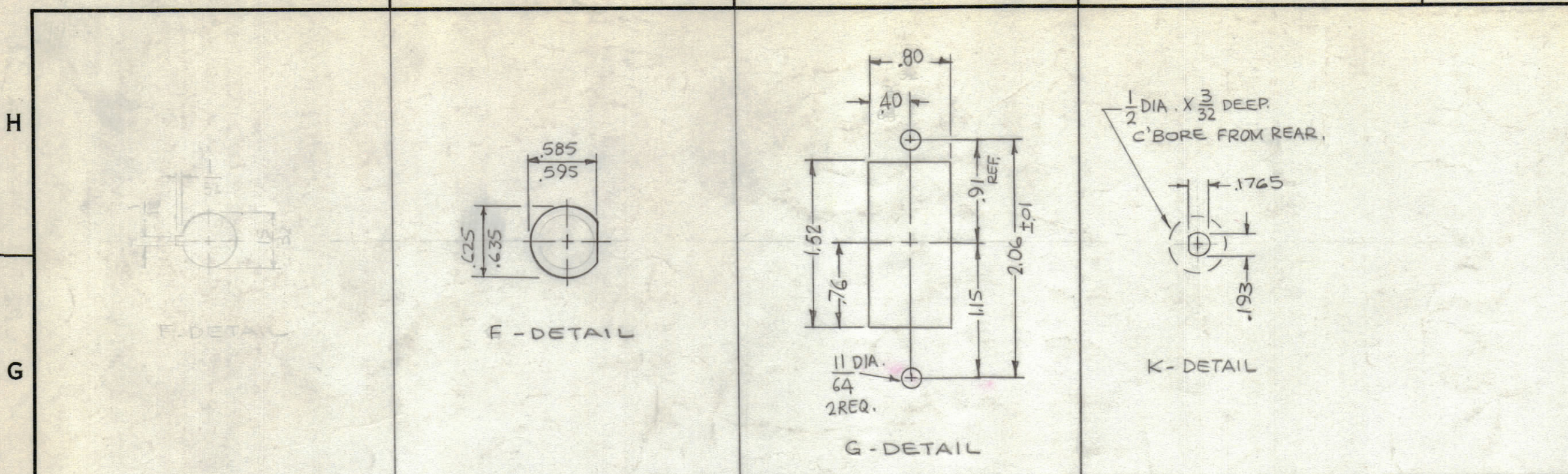


| REVISIONS | | | | | | |
|-----------|-----|--|----------|------------|-------|------|
| ZONE | SYM | DESCRIPTION | DATE | E.M.N. NO. | DRAFT | CHKD |
| | X4 | COMPLETELY REVISED & REDRAWN | 3-28-66 | X4 | | |
| | X5 | 1-3/4 WAS 2, 55/64 WAS 47/64 | 5-25-66 | X5 | | |
| | X2 | COMPLETELY REVISED | 6-15-66 | X6 | | |
| | X7 | 2 J HOLES ADDED | 6-23-66 | X7 | | |
| | X8 | K HOLE ADDED | 6-28-66 | X8 | | |
| | X9 | C BORE ADDED TO K DETAIL, G DETAIL REVISED | 9-8-66 | X9 | | |
| | X10 | L HOLES WERE D HOLES | 9-15-66 | X10 | | |
| | Ø | ORIGINAL RELEASE FOR PRODUCTION | 11-30-66 | Ø | | |



MACHINING:

- MILL ALL EDGES.
- HOLES MUST BE DRILLED, UNLESS OTHERWISE SPECIFIED.
- LATERAL BOW OF PANEL MUST BE KEPT TO .031 TOLERANCE.
- PANEL MUST BE FREE OF ALL MACHINING MARKS, GOUGES AND SCRATCHES. IF NECESSARY, SAND FRONT OF PANEL WITH NO. 120 GRIT SANDPAPER.

FINISH NOTES:

- S404 - IRIDITE 14-2 AL-COAT.
- S114 - ZINC CHROMATE PRIMER } FRONT AND EDGES ONLY
- S115 - SMOOTH GRAY ENAMEL } OR

PRIME AND PAINT PER CUSTOMER'S SPECIFICATIONS.

| HOLES | DESCRIPTION | REQ |
|-------|-------------------------------------|-----|
| A | 13/64 DIA. | 4 |
| B | DR. 19/64 DIA. C'SINK 82° TO .390 D | 4 |
| C | 3/8 DIA. | 1 |
| D | 15/32 DIA | 2 |
| E | 1/4 X 29/64 SLOT | 4 |
| F | SEE DETAIL | 1 |
| G | SEE DETAIL | 2 |
| H | 1/8 DIA X 1/16 DP FROM REAR | 1 |
| J | .078 DIA. | 2 |
| K | SEE DETAIL | 1 |
| L | 1/2 DIA. | 2 |

NOTES

| | | |
|-----------|---------------|-----------|
| 1 | TCP-2 | AS252 |
| QTY./UNIT | MODEL USED ON | ASSY. NO. |
| SCALE | CODE | |
| 1:1 | A | |

| | | | |
|---------------------------------------|------------|----------------------|------------------------------|
| REF. LD1839 | | LIST OF MATERIAL | |
| REQ'D. | ITEM | PART NUMBER | DESCRIPTION |
| | F. BUDETTI | | THE TECHNICAL MATERIEL CORP. |
| MATERIAL | | MAMARONECK, NEW YORK | |
| 3/16 THICK ALUMINUM | | TITLE | |
| 2024-T3 | | PANEL, FRONT | |
| FINISH | | SEE NOTES | |
| UNLESS OTHERWISE SPECIFIED | | DRAWN | |
| DIMENSIONS ARE IN INCHES AND INCLUDE | | DATE | |
| CHEMICALLY APPLIED OR PLATED FINISHES | | 3-28-66 | |
| DECIMALS | | CHECKED | |
| .X ± .05 | | DATE | |
| .XX ± .01 | | 11-21-66 | |
| .XXX ± .005 | | ELECT. DES. | |
| FRACTIONS | | DATE | |
| ± 1/64 | | 11-28-66 | |
| ANGLES | | MECH. DES. | |
| ± 0° 30' | | DATE | |
| TOLERANCES | | 11-28-66 | |