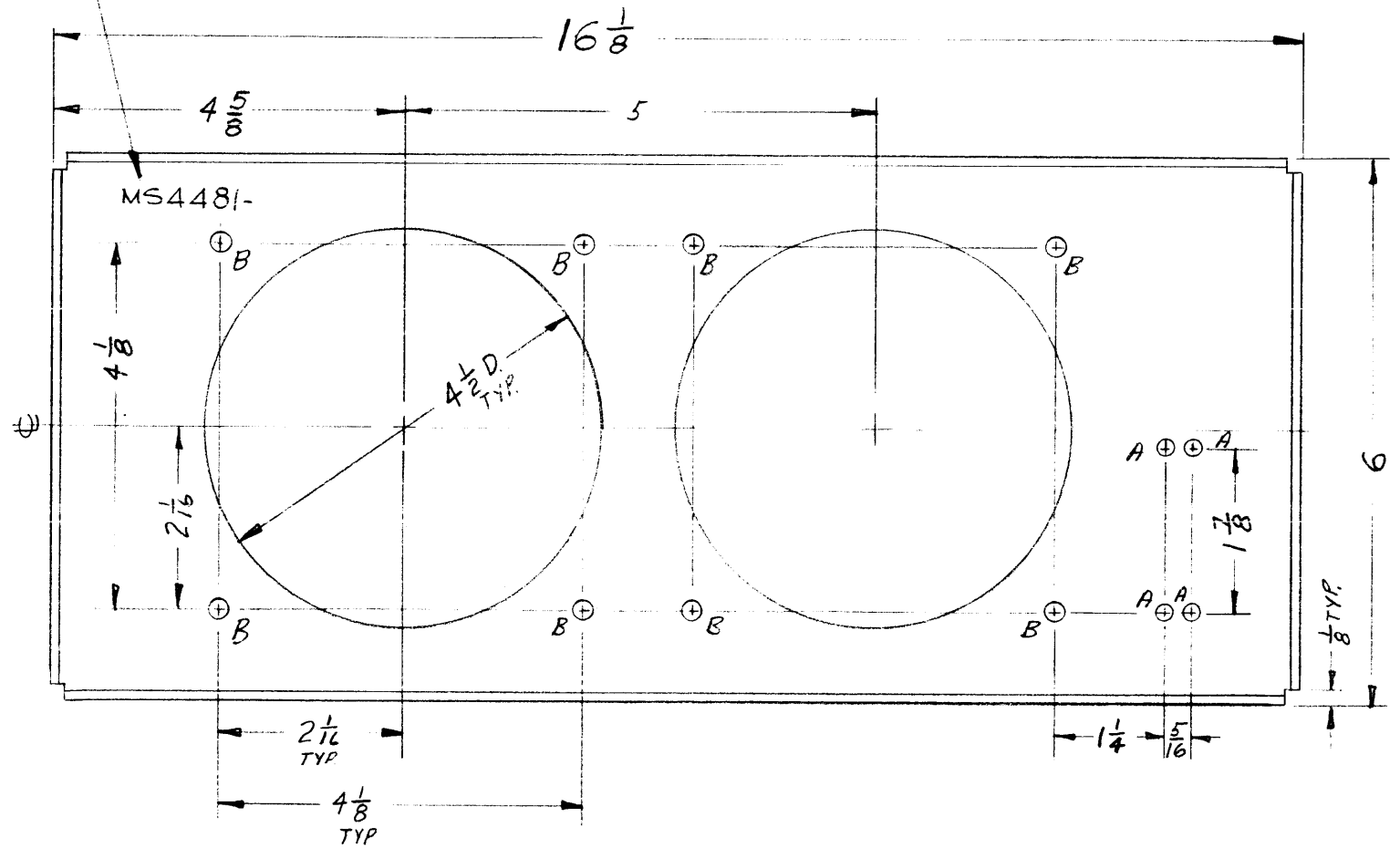


MS4481

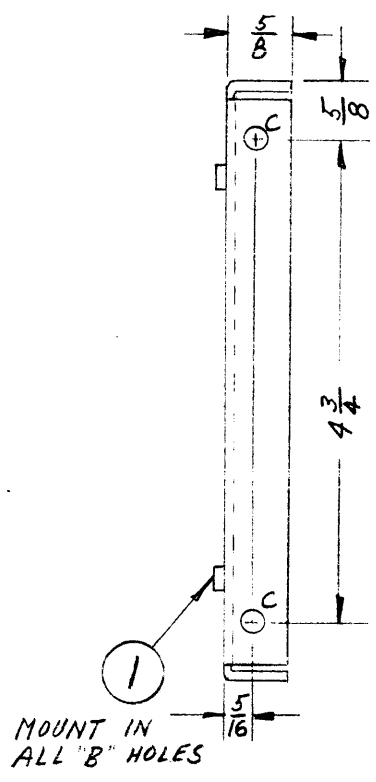
REVISIONS					
SYM	DESCRIPTION	DATE	E.M.N. NO.	DRAFT	CHKD APPD
X1	Length was 1 1/8	3/29/65		D/M	CM
X2	DIM CHGE, 4 5/8 WAS 4 1/8				
Ø	ORIGINAL RELEASE FOR PRODUCTION	5/3/67	Ø	Ø	JH

METAL STAMP TMC PART NO.  
 1/8 HIGH GOTHIC W/LATEST REV LETTER.

OPPOSITE SIDE  
 SAME.



HOLES	DESCRIPTION	REQ.
A	9/64 DIA	4
B	.191-.194 "	8
C	15/64 DIA	4



REF: LD1837

UNLESS OTHERWISE SPECIFIED:

1. USE MATERIAL THICKNESS FOR MAXIMUM RADIUS ON ALL BENDS
2. ALL ANGULAR BENDS 90 DEGREES
3. REMOVE ALL BURRS AND SHARP EDGES
4. MOUNT INSERTS AFTER FINISHING

NOTES

1	TSTE10K 1AX563	A4226
Q'TY./UNIT	MODEL USED ON	ASS'Y. NO.
SCALE	CODE	

THE CONTENTS OF THIS DRAWING ARE THE EXCLUSIVE PROPERTY OF THE TECHNICAL MATERIEL CORP. ITS UNAUTHORIZED USE OR REPRODUCTION IN WHOLE OR IN PART IS STRICTLY FORBIDDEN.

REQ'D.	ITEM	PART NUMBER	DESCRIPTION	SYMBOL
B	1	NT129-0632-4	NUT, PLAIN, SPLINE	B
<b>BUDETTI LIST OF MATERIAL</b>				
MATERIAL .081 ALUMINUM 5052-H32			<b>THE TECHNICAL MATERIEL CORP.</b> MAMARONECK, NEW YORK	
FINISH S404 YEL IRIDITE			TITLE CHASSIS, FAIU	
UNLESS OTHERWISE SPECIFIED DIMENSIONS ARE IN INCHES AND INCLUDE CHEMICALLY APPLIED OR PLATED FINISHES		DRAWN D/M	DATE 26/10/65	FINAL APPROVAL [Signature]
DECIMALS .X ± .05 .XX ± .01 .XXX ± .005		CHECKED D/M	DATE 7/22/65	DATE 5/1/67
FRACTIONS ± 1/64 ANGLES ± 0° 30'		ELECT. DES. D/M	DATE	DATE
TOLERANCES		MECH. DES. D/M	DATE	DATE
SHEET				REV. LTR.