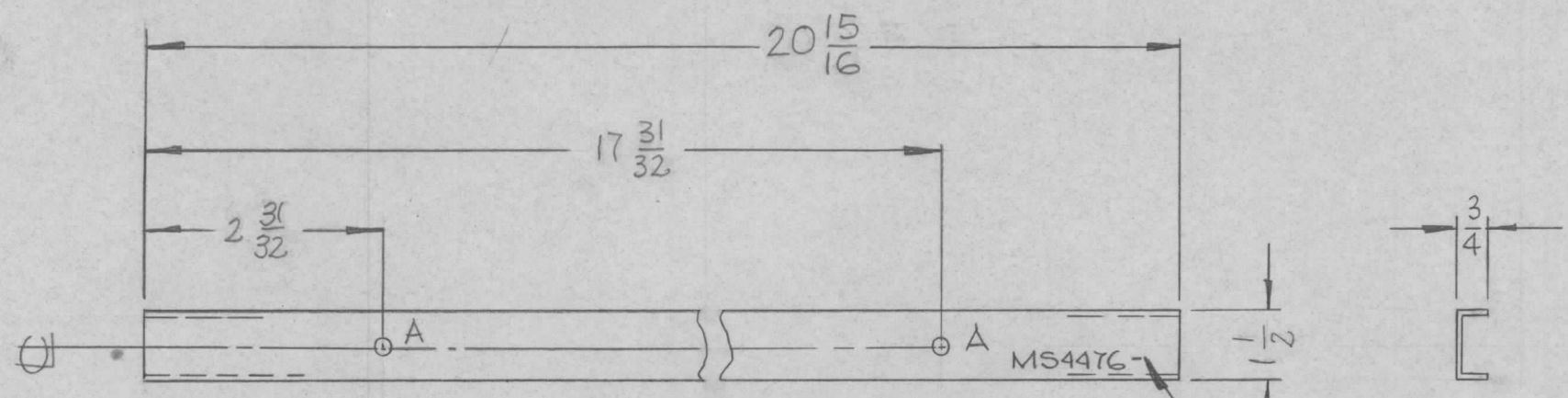


REQ. PER UNIT	USED ON		
	MODEL	ASS'Y. NO.	DATE
	TSTE-10K		5-5-66

MS4476 \emptyset



MARK TMC P/N $\frac{1}{8}$ HIGH
 GOTHIC W/LATEST
 REVISION LETTER

A - $\frac{3}{16}$ D 2 REQ.

REQ. ITEM	PART NO.	DESCRIPTION	SYMBOL
	1/4 x 3/4 x 1/2 CHANNEL	THE TECHNICAL MATERIEL CORP. MAMARONECK, NEW YORK	\emptyset
	STOCK SIZE		
\emptyset	EXTRUDED ALUM.	TRIM AUX FRAME REAR BOT.	
	MATERIAL		
	2024-T6	WFW	J.R. 4/2/66
	TYPE & TEMPER	HEAT TREAT. SPEC.	DRAWN
	S404 VEL IRIDITE		CHECKED
	FINISH & SPEC. NO.	ELEC. DES. APP.	MECH. DES. APP.
			MS4476 \emptyset

UNLESS OTHERWISE SPECIFIED DIMENSIONS ARE IN INCHES AND INCLUDE CHEMICALLY APPLIED OR PLATED FINISHES

SCALE NOT TO SCALE

DECIMALS .X \pm .05 .XX \pm .01 .XXX \pm .005
 FRACTIONS \pm 1/64 ANGLES \pm 0° 30'

TOLERANCES

MS4476 \emptyset