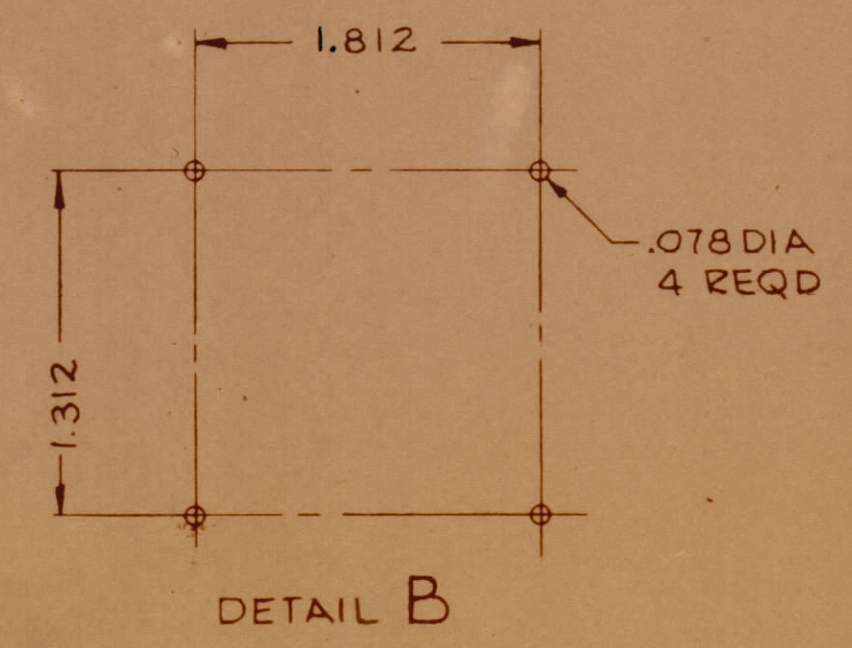
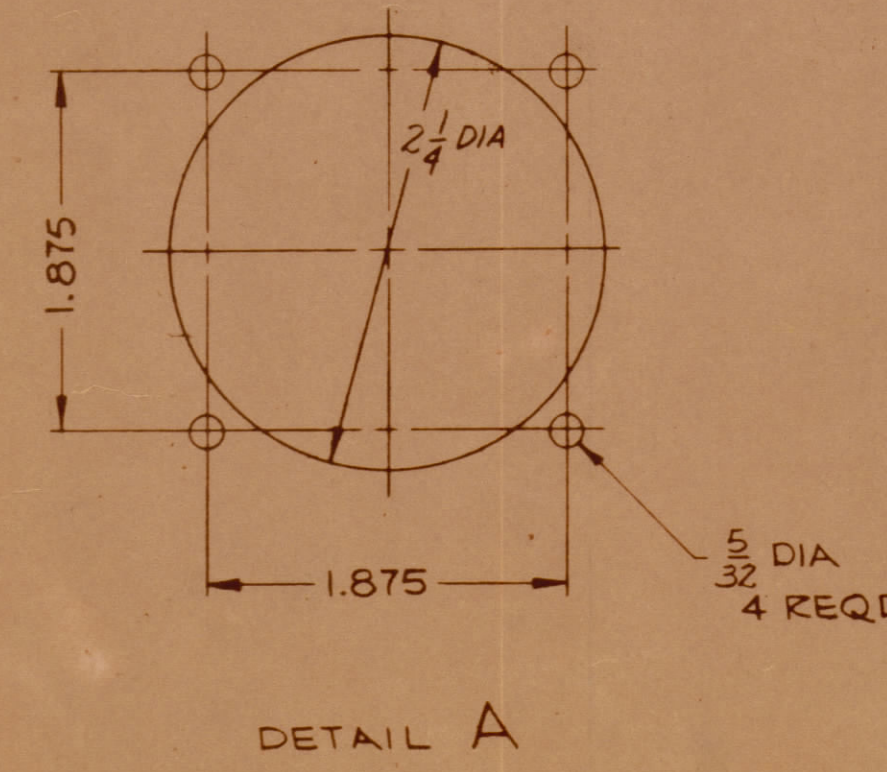
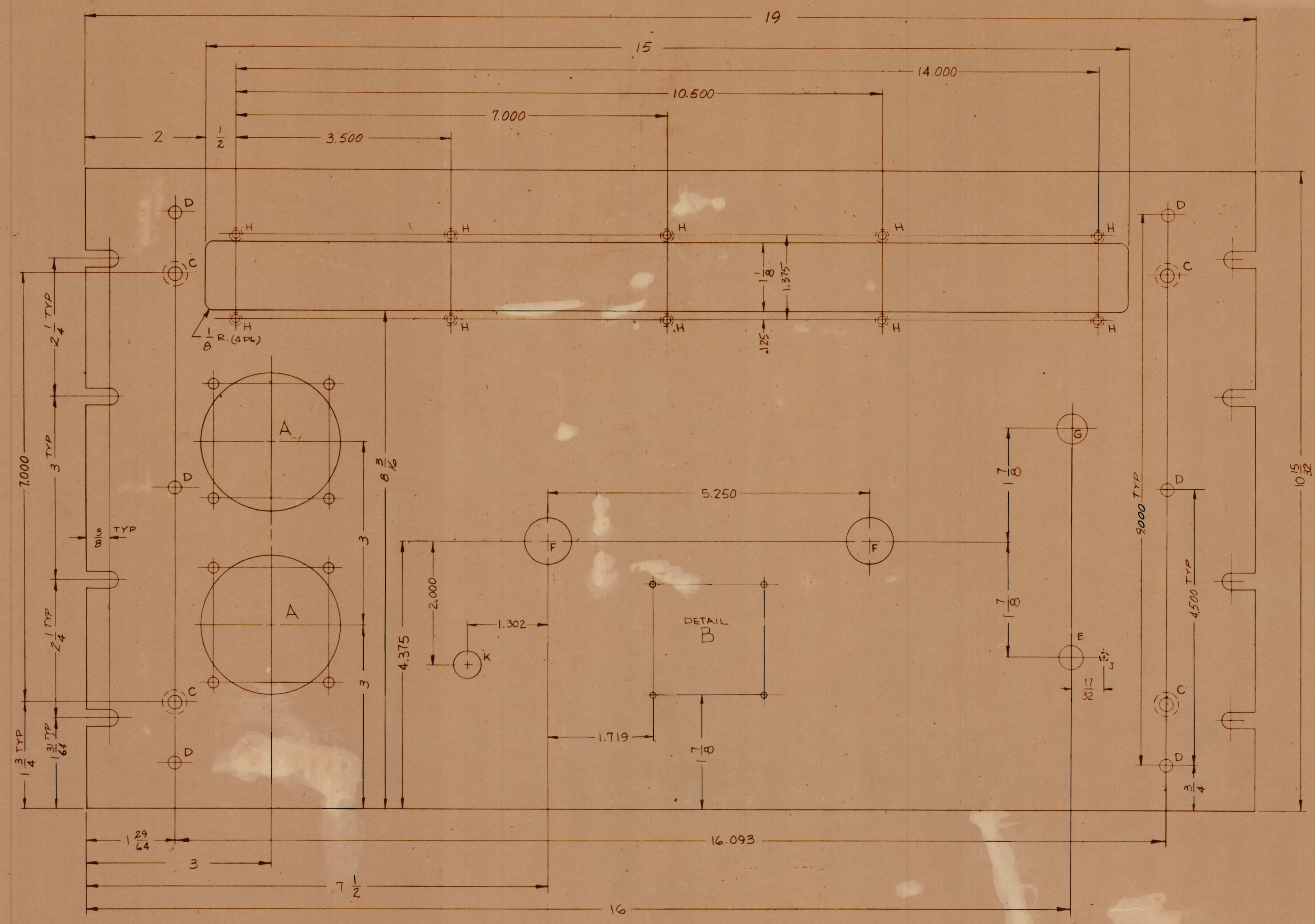


REVISIONS						
ZONE	SYM	DESCRIPTION	DATE	E.M.N. NO.	DRAFT	CHKD
		ORIGINAL RELEASE	3-26-65		G.D.L.	



HOLE LEGEND		
HOLE	DESCRIPTION	REQD
A	SEE DETAIL	2
B	SEE DETAIL	1
C	.196 DIA. CSK .82" X .390 DIA. (10-32)	4
D	3/16 DIA	6
E	3/8 DIA	1
G	15/32 DIA	1
H	DR # TAP # 3-48	10
F	3/4 DIA	2
J	.130 D. X 3/32 DEEP ON REAR OF PANEL	1
K	7/16 DIA	1

- MACHINING:**
- MILL ALL EDGES.
 - HOLES MUST BE DRILLED, UNLESS OTHERWISE SPECIFIED.
 - LATERAL BOW OF PANEL MUST BE KEPT TO .031 TOLERANCE.
 - PANEL MUST BE FREE OF ALL MACHINING MARKS, GOUGES AND SCRATCHES. IF NECESSARY, SAND FRONT OF PANEL WITH NO. 120 GRIT SANDPAPER.
- FINISH NOTES:**
- S404 - IRIDITE 14-2 AL-COAT.
 - 8114 - ZINC CHROMATE PRIMER
 - FEDERAL STANDARD 595
- FRONT AND EDGES ONLY

MS 4460

UNLESS OTHERWISE SPECIFIED
DIMENSIONS ARE IN INCHES AND INCLUDE
CHEMICALLY APPLIED OR PLATED FINISHES

DECIMALS: ± .005, ± .01, ± .008
FRACTIONS: ± 1/64, ± 1/32, ± 1/16, ± 1/8, ± 3/16, ± 1/4, ± 3/8, ± 1/2, ± 5/8, ± 3/4, ± 7/8, ± 1.00

TOLERANCES: ± .005, ± .01, ± .008

QTY/UNIT	CHGR-3A	44227
SCALE	1:1	
THE CONTENTS OF THIS DRAWING ARE THE EXCLUSIVE PROPERTY OF THE TECHNICAL MATERIEL CORP. ITS UNAUTHORIZED USE OR REPRODUCTION IN WHOLE OR IN PART IS STRICTLY FORBIDDEN.		

REF: LD 1836

REQD. ITEM	PART NUMBER	DESCRIPTION	SYMBOL
J. ANGER		LIST OF MATERIAL	
MATERIAL		THE TECHNICAL MATERIEL CORP. MAMARONECK, NEW YORK	
3/16 ALUMINUM 2024-T3		TITLE PANEL, FRONT, MACHINING	
FINISH		DRAWN: G.D.L. DATE: 3-26-65	
SEE NOTES		CHECKED: [Signature] DATE: 3/24/65	
UNLESS OTHERWISE SPECIFIED DIMENSIONS ARE IN INCHES AND INCLUDE CHEMICALLY APPLIED OR PLATED FINISHES		ELECT. DES: [Signature] DATE: 3/24/65	
DECIMALS: ± .005, ± .01, ± .008		MECH. DES: [Signature] DATE: 3/24/65	
TOLERANCES: ± 1/64, ± 1/32, ± 1/16, ± 1/8, ± 3/16, ± 1/4, ± 3/8, ± 1/2, ± 5/8, ± 3/4, ± 7/8, ± 1.00		MS 4460	
		SHEET 1	

NOTES